

SAMSUNG

Simple User Guide

Thank you for purchasing this Samsung product.

To receive more complete service, please register your product at www.samsung.com

Model _____ Serial No. _____

If you have any questions, please call us at 1-800-SAMSUNG (1-800-726-7864) for assistance.

Figures and illustrations in this Simple User Guide are provided for reference only and may differ from the actual product appearance. Product design and specifications may change without notice.

Contact Samsung world wide

If you have any questions or comments relating to Samsung products, please contact the Samsung service center.

Samsung Service Center	Website	Address
1-800-SAMSUNG (726-7864)	www.samsung.com/ca/support (English) www.samsung.com/ca_fr/support (French)	Samsung Electronics Canada Inc. 2050 Derry Road West Mississauga, Ontario L5N 0B9 Canada



© 2025 Samsung Electronics Co., Ltd. All rights reserved.

BN68-24425A-00

Caring for the TV

- To clean this apparatus, unplug the power cord from the wall outlet and wipe the product with a soft, dry cloth. Do not use any chemicals such as wax, benzene, alcohol, thinners, insecticide, air fresheners, lubricants, or detergents. These chemicals can damage the appearance of the TV or erase the printing on the product.
- The exterior and screen of the TV can get scratched during cleaning. Be sure to wipe the exterior and screen carefully using a soft cloth to prevent scratches.
- Do not spray water or any liquid directly onto the TV. Any liquid that goes into the product may cause a failure, fire, or electric shock.

- Make sure that all your Internet-connected devices are behind your network's firewall.
- If your access point or modem has a standby mode button, use it to disconnect your home network from the Internet when it is not in use.
- Use strong passwords for all your Internet accounts (Netflix, Facebook, etc.).
- If any unexpected messages appear on your TV screen requesting permission to link a device or enable a remote session, do NOT accept.
- Do not visit suspicious websites and do not install any suspicious programs. We recommend that users install only those authorized apps provided by Samsung through Samsung Smart Hub.

Internet security

- Samsung takes a number of steps to protect its Internet-compatible Smart TVs against unauthorized incursions and hacking. For example, certain sensitive communications between the TV and the Internet servers are encrypted. In addition, the TV's operating system has adopted controls to prevent the installation of unauthorized applications. Although we take steps to protect your Smart TV and personal information, no Internet-connected device or transmission is completely secure. We therefore encourage you to take additional steps to safeguard your TV, secure your Internet connection, and minimize the risk of unauthorized access. These steps are listed below:
- When Samsung releases software updates to improve the security of your TV, you should promptly install these updates. To automatically receive these updates, turn on **Auto Update** in the TV's menu (⏻) > left directional button > **Settings** > **Support** > **Software Update** > **Auto Update**). When an update is available, a popup message appears on the TV screen. Accept the software download and update by selecting **Yes** when prompted. Take steps to secure your wireless access point and network. Your access point's manual should provide additional details about how to implement the following measures:
 - Secure your wireless access point's management settings with a unique password to prevent unauthorized changes to security related settings.
 - Implement standard encryption (e.g., WPA2 encryption) on your wireless access point to secure your wireless network signal.
 - Secure access to your wireless network with a hard-to-guess password.
 - Confirm your access point's firewall setting is enabled (if so equipped).

01 Package Content

Make sure the following items are included with your TV. If any items are missing, contact your dealer.

- Simple User Guide
- Warranty Card / Regulatory Guide (Not available in some locations)
- *Samsung Smart Remote
- *Remote Control
- *Standard Remote Control
- *Batteries
- *TV Power Cord
- *Wall Mount Adapter x 2
- *Slim Power Cord
- **Power Box
- **Power Box Cable x 2
- **C-type Power Adapter
- **C to C Cable
- **Wireless One Connect Box
- **One Connect Box
- **One Connect Box Power Cord
- **One Connect Cable x 2
- **One Connect cable holder (for wall mount)

- *: Some of the items specified above may not be included in the package, depending on the TV model.
- ** : Some components may not be provided, depending on the One Connect connection method (wired or wireless connection).
- ** : The number of One Connect cables provided may differ depending on the model.
- * The type of battery may vary depending on the model.
- * The items' colors and shapes may vary depending on the models.

Before Reading This Simple User Guide

This TV comes with this Simple User Guide and an embedded User guide.

(F6***F/H5***F: ⏻ > left directional button > **Settings** > **Support** > **Open User guide**)

(Other models: ⏻ > left directional button > **Settings** > **Support** > **Tips and User Guides** > **Open User guide**)

On the website (www.samsung.com), you can download the manuals and see its contents on your PC or mobile device.

Refer to the power specifications section of the manual or the power supply label on the product for voltage and amperage information.

Power-supply cords should be placed so that they are not likely to be walked on or pinched by items placed upon or against them. Pay particular attention to cords at the plug end, at wall outlets, and at the point where they exit from the appliance.

Never insert anything metallic into the open parts of this apparatus. This may cause electric shock.

To avoid electric shock, never touch the inside of this apparatus. Only a qualified technician should open this apparatus.

Be sure to plug in the power cord until it is firmly seated. When unplugging the power cord from a wall outlet, always pull on the power cord's plug. Never unplug it by pulling on the power cord. Do not touch the power cord with wet hands.

If this apparatus does not operate normally - in particular, if there are any unusual sounds or smells coming from it - unplug it immediately and contact an authorized dealer or Samsung service center.

To protect this apparatus from a lightning storm, or to leave it unattended and unused for a long time, be sure to unplug it from the wall outlet and disconnect the antenna or cable system.

Accumulated dust can cause an electric shock, an electric leakage, or a fire by causing the power cord to generate sparks and heat or by causing the insulation to deteriorate.

Use only a properly grounded plug and wall outlet.

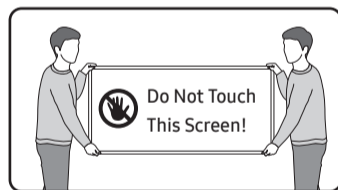
An improper ground may cause electric shock or equipment damage. (Class I Equipment only.)

To turn off this apparatus completely, disconnect it from the wall outlet. To ensure you can unplug this apparatus quickly if necessary, make sure that the wall outlet and power plug are readily accessible.

CAUTION	
RISK OF ELECTRIC SHOCK. DO NOT OPEN.	
CAUTION: TO REDUCE THE RISK OF ELECTRIC SHOCK, DO NOT REMOVE COVER (OR BACK). THERE ARE NO USER SERVICEABLE PARTS INSIDE. REFER ALL SERVICING TO QUALIFIED PERSONNEL.	
	This symbol indicates that high voltage is present inside. It is dangerous to make any kind of contact with any internal part of this product.
	This symbol indicates that this product has included important literature concerning operation and maintenance.
	Class II product: This symbol indicates that a safety connection to electrical earth (ground) is not required. If this symbol is not present on a product with a power cord, the product MUST have a reliable connection to protective earth (ground).
	AC voltage: Rated voltage marked with this symbol is AC voltage.
	DC voltage: Rated voltage marked with this symbol is DC voltage.

- Cables not included can be purchased separately.
- Check for any accessories hidden behind or in the packing materials when opening the box.

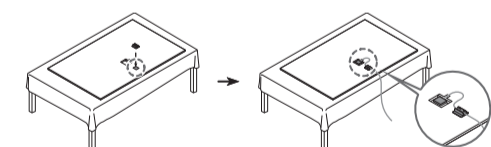
- The screen can be damaged from direct pressure when handled incorrectly. As shown in the figure, make sure to grip the edges of the screen when you lift the TV. For more information about handling, refer to the Unpacking and Installation Guide came with this product.



Using the One Connect cable holder

(S95F, The Frame (LS03FA) only)

You can use the One Connect cable holder to tidy up the cables while installing the wall mount.



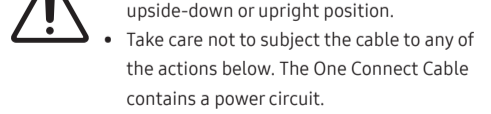
- The image may differ depending on the model.

02 Connecting the TV to the One Connect Box

(One Connect Box Supported Model only)

For more information about how to connect via the One Connect Box, refer to Unpacking and Installation Guide.

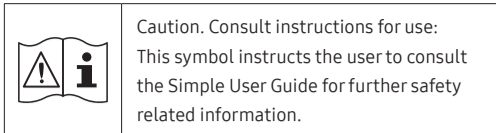
- Do not use the One Connect Box in the upside-down or upright position.
- Take care not to subject the cable to any of the actions below. The One Connect Cable contains a power circuit.



- Bending
- Twisting
- Pulling
- Pressing on
- Electric shock

CLASS 1 LASER PRODUCT (The Frame (LS03FA) only)

- Caution - Invisible laser radiation when open. Do not stare into beam.
 - Do not bend the One Connect Cable excessively. Do not cut the cable.



Caution. Consult instructions for use: This symbol instructs the user to consult the Simple User Guide for further safety related information.

Power

- Do not overload wall outlets, extension cords, or adapters beyond their voltage and capacity. It may cause fire or electric shock.

Refer to the power specifications section of the manual or the power supply label on the product for voltage and amperage information.

Power-supply cords should be placed so that they are not likely to be walked on or pinched by items placed upon or against them. Pay particular attention to cords at the plug end, at wall outlets, and at the point where they exit from the appliance.

Never insert anything metallic into the open parts of this apparatus. This may cause electric shock.

To avoid electric shock, never touch the inside of this apparatus. Only a qualified technician should open this apparatus.

Be sure to plug in the power cord until it is firmly seated. When unplugging the power cord from a wall outlet, always pull on the power cord's plug. Never unplug it by pulling on the power cord. Do not touch the power cord with wet hands.

If this apparatus does not operate normally - in particular, if there are any unusual sounds or smells coming from it - unplug it immediately and contact an authorized dealer or Samsung service center.

To protect this apparatus from a lightning storm, or to leave it unattended and unused for a long time, be sure to unplug it from the wall outlet and disconnect the antenna or cable system.

Accumulated dust can cause an electric shock, an electric leakage, or a fire by causing the power cord to generate sparks and heat or by causing the insulation to deteriorate.

Use only a properly grounded plug and wall outlet.

An improper ground may cause electric shock or equipment damage. (Class I Equipment only.)

To turn off this apparatus completely, disconnect it from the wall outlet. To ensure you can unplug this apparatus quickly if necessary, make sure that the wall outlet and power plug are readily accessible.

Do not place heavy objects on the cable.

Do not disassemble either of the cable connectors.

Caution - Use of controls, adjustments, or the performance of procedures other than those specified herein may result in hazardous radiation exposure.

Do not place heavy objects on the cable.

Do not disassemble either of the cable connectors.

Caution - Use of controls, adjustments, or the performance of procedures other than those specified herein may result in hazardous radiation exposure.

Do not place heavy objects on the cable.

Do not disassemble either of the cable connectors.

Caution - Use of controls, adjustments, or the performance of procedures other than those specified herein may result in hazardous radiation exposure.

Do not place heavy objects on the cable.

Do not disassemble either of the cable connectors.

Caution - Use of controls, adjustments, or the performance of procedures other than those specified herein may result in hazardous radiation exposure.

Do not place heavy objects on the cable.

Do not disassemble either of the cable connectors.

Caution - Use of controls, adjustments, or the performance of procedures other than those specified herein may result in hazardous radiation exposure.

Do not place heavy objects on the cable.

Do not disassemble either of the cable connectors.

Caution - Use of controls, adjustments, or the performance of procedures other than those specified herein may result in hazardous radiation exposure.

Do not place heavy objects on the cable.

Do not disassemble either of the cable connectors.

Caution - Use of controls, adjustments, or the performance of procedures other than those specified herein may result in hazardous radiation exposure.

Do not place heavy objects on the cable.

Do not disassemble either of the cable connectors.

Caution - Use of controls, adjustments, or the performance of procedures other than those specified herein may result in hazardous radiation exposure.

Do not place heavy objects on the cable.

Do not disassemble either of the cable connectors.

Caution - Use of controls, adjustments, or the performance of procedures other than those specified herein may result in hazardous radiation exposure.

Do not place heavy objects on the cable.

Do not disassemble either of the cable connectors.

Caution - Use of controls, adjustments, or the performance of procedures other than those specified herein may result in hazardous radiation exposure.

Do not place heavy objects on the cable.

Do not disassemble either of the cable connectors.

Caution - Use of controls, adjustments, or the performance of procedures other than those specified herein may result in hazardous radiation exposure.

Do not place heavy objects on the cable.

Do not disassemble either of the cable connectors.

Caution - Use of controls, adjustments, or the performance of procedures other than those specified herein may result in hazardous radiation exposure.

Do not place heavy objects on the cable.

Do not disassemble either of the cable connectors.

Caution - Use of controls, adjustments, or the performance of procedures other than those specified herein may result in hazardous radiation exposure.

Do not place heavy objects on the cable.

Do not disassemble either of the cable connectors.

Caution - Use of controls, adjustments, or the performance of procedures other than those specified herein may result in hazardous radiation exposure.

Do not place heavy objects on the cable.

Do not disassemble either of the cable connectors.

Caution - Use of controls, adjustments, or the performance of procedures other than those specified herein may result in hazardous radiation exposure.

Do not place heavy objects on the cable.

Do not disassemble either of the cable connectors.

Caution - Use of controls, adjustments, or the performance of procedures other than those specified herein may result in hazardous radiation exposure.

Do not place heavy objects on the cable.

Do not disassemble either of the cable connectors.

Caution - Use of controls, adjustments, or the performance of procedures other than those specified herein may result in hazardous radiation exposure.

Do not place heavy objects on the cable.

Do not disassemble either of the cable connectors.

Caution - Use of controls, adjustments, or the performance of procedures other than those specified herein may result in hazardous radiation exposure.

Do not place heavy objects on the cable.

Do not disassemble either of the cable connectors.

Caution - Use of controls, adjustments, or the performance of procedures other than those specified herein may result in hazardous radiation exposure.

Do not place heavy objects on the cable.

Do not disassemble either of the cable connectors.

Caution - Use of controls, adjustments, or the performance of procedures other than those specified herein may result in hazardous radiation exposure.

Do not place heavy objects on the cable.

Do not disassemble either of the cable connectors.

Caution - Use of controls, adjustments, or the performance of procedures other than those specified herein may result in hazardous radiation exposure.

Do not place heavy objects on the cable.

Do not disassemble either of the cable connectors.

Caution - Use of controls, adjustments, or the performance of procedures other than those specified herein may result in hazardous radiation exposure.

Do not place heavy objects on the cable.

Do not disassemble either of the cable connectors.

Caution - Use of controls, adjustments, or the performance of procedures other than those specified herein may result in hazardous radiation exposure.

Installation

- Do not place this apparatus near or over a radiator or heat register, or where it is exposed to direct sunlight.
- Do not place vessels (vases etc.) containing water on this apparatus, as this can result in a fire or electric shock.
- Do not expose this apparatus to rain or moisture.
- Be sure to contact an authorized Samsung service center for information if you intend to install your TV in a location with heavy dust, high or low temperatures, high humidity, chemical substances, or where it will operate 24 hours a day such as in an airport, a train station, etc. Failure to do so may lead to serious damage to your TV.
- Do not expose this apparatus to dripping or splashing.

Mounting the TV on a wall

- If you mount this TV on a wall, follow the instructions exactly as set out by the manufacturer. If it is not correctly mounted, the TV may slide or fall and cause serious injury to a child or adult and serious damage to the TV.

- To order the Samsung wall mount kit, contact Samsung service center.

- Samsung Electronics is not responsible for any damage to the product or injury to yourself or others if you choose to install the wall mount on your own.

- Samsung is not liable for product damage or personal injury when a non-VESA or non-specified wall mount is used or when the consumer fails to follow the product installation instructions.

- You can install your wall mount on a solid wall perpendicular to the floor. Before attaching the wall mount to surfaces other than plaster board, contact your nearest dealer for additional information. If you install the TV on a ceiling or slanted wall, it may fall and result in severe personal injury.

- When installing a wall mount kit, we recommend you fasten all four VESA screws.

- If you want to install a wall mount kit that attaches to the wall using two top screws only, be sure to use a Samsung wall mount kit that supports this type of installation. (You may not be able to purchase this type of wall mount kit, depending on the geographical region.)

- Do not mount the TV at more than a 15 degree tilt.

- Standard dimensions for wall mount kits are shown in the table on the Unpacking and Installation Guide.

- Do not install your wall mount kit while your TV is turned on. This may result in personal injury from electric shock.

- Always use cabinets or stands or mounting methods recommended by Samsung.

- Always use furniture that can safely support the television set.

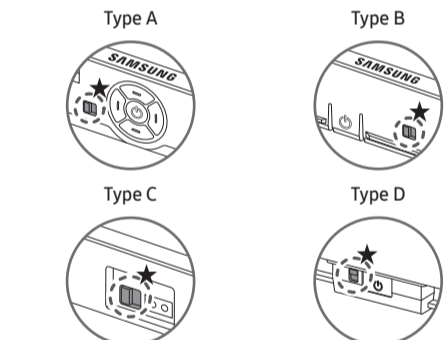
- Always ensure the television set is not overhanging the edge of the supporting furniture.

- Always use cabinets or stands or mounting methods recommended by Samsung.

- Always use furniture that can safely support the television set.

- Always ensure the television set is not overhanging the edge of the supporting furniture.

How to turn on and off the Microphone



★ : On/Off Switch

You can turn on or off the microphone by using the switch at the bottom or rear bottom of the TV. If microphone is turned off, All voice and sound features using microphone are not available.

This function is featured only in Q8F (except for 32Q8F)/QN6*/QN7*/QN8*/QN9*/QN9**F/S8*/S9*/MR95F/The Frame.

The position and shape of the microphone switch may differ depending on the model.

During analysis using data from the microphone, the data is not saved.

04 Troubleshooting and Maintenance

Troubleshooting

For more information, refer to "Troubleshooting" in the User guide.

(F6***F/H5***F: ⏻ > left directional button > **Settings** > **Support** > **Open User guide** > **Troubleshooting**)

(Other models: ⏻ > left directional button > **Settings** > **Support** > **Tips and User Guides** > **Open User guide** > **Troubleshooting**)

If none of the troubleshooting tips apply, please visit "www.samsung.com" and click Support or contact the Samsung service center.

This panel is made up of sub pixels which require sophisticated technology to produce. There may be, however, a few bright or dark pixels on the screen. These pixels will have no impact on the performance of the product.

To keep your TV in optimum condition, upgrade to the latest software. Use the **Update Now** or **Auto Update** functions on the TV's menu (⏻) > left directional button > **Settings** > **Support** > **Software Update** > **Update Now** or **Auto Update**.

★ : The Frame only

- Do not use screws that are longer than the standard dimension or do not comply with the VESA standard screw specifications. Screws that are too long may cause damage to the inside of the TV set.
- For wall mounts that do not comply with the VESA standard screw specifications, the length of the screws may differ depending on the wall mount specifications.
- Do not fasten the screws too firmly. This may damage the product or cause the product to fall, leading to personal injury. Samsung is not liable for these kinds of accidents.
- Always have two people mount the TV onto a wall.
 - For 82 inch or larger models, have four people mount the TV onto a wall.

Providing proper ventilation for your TV

When you install your TV *and One Connect Box, maintain a distance of at least 4 inches (10 cm) between the TV *and One Connect Box with other objects (walls, cabinet sides, etc.) to ensure proper ventilation. Failing to maintain proper ventilation may result in a fire or a problem with the product caused by an increase in its internal temperature.

*: One Connect Box Supported Model Only

- When you install your TV with a stand or a wall mount, we strongly recommend you use parts provided by Samsung Electronics only. Using parts provided by another manufacturer may cause difficulties with the product or result in injury caused by the product falling.

Safety Precaution

- Caution:** Pulling, pushing, or climbing on the TV may cause the TV to fall. In particular, do not hang on or destabilize the TV. This action may cause the TV to tip over, causing serious injuries or death. Follow all safety precautions provided in the Safety Flyer included with your TV. For added stability and safety, you can purchase and install the anti-tip device, referring to "Preventing the TV from falling."

