

Assembly Instruction For

60" TV STAND LA-4900-15-TV2

Caution : Please read instructions thoroughly before unpacking assembly parts. Sharp, exposed staple tips can cause injury, therefore, for your protection, please remove any exposed staples used in packing.



1.We recommend that you should assemble this product with the assistance of another person; this will make assembly easier, and will help to eliminate damage the product or injury to persons during assembly.


2.Be sure to check all packing materials carefully for small parts that may have come loose inside the carton during shipment.

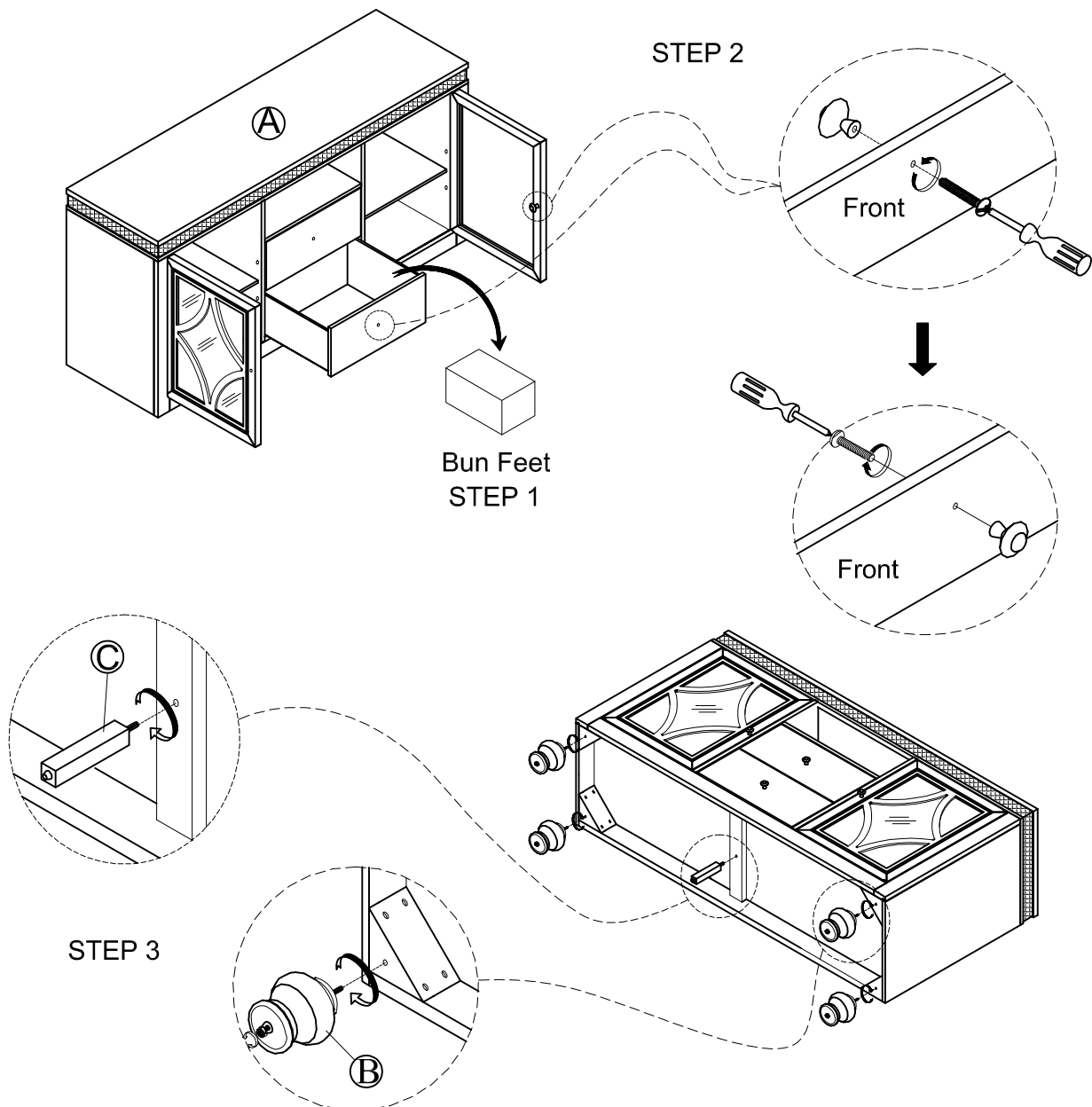
3.Please do not over tighten screws or bolts.

4.Please put all parts on a non-abrasive floor before assembly, and follow the assembly steps to assemble your newly purchased product correctly and efficiently.

PARTS LIST			
NO.	PART DESC	CODE	Q' TY
A	60" TV STAND	LA-4900-15-TV2	1
B	BUN FEET	PLA-4900-15-TVLEG	4
C	SUPPORT LEG	PLA-4900-TVSPL	1

HARDWARE LIST			
NO.	HARDWARE DESC	CODE	Q'TY
1	 SCREW-DRIVER(NOT PROVIDED)		1
2	 ANTI-TIP KIT-METAL (SET)	P-ATKNSS-M	1

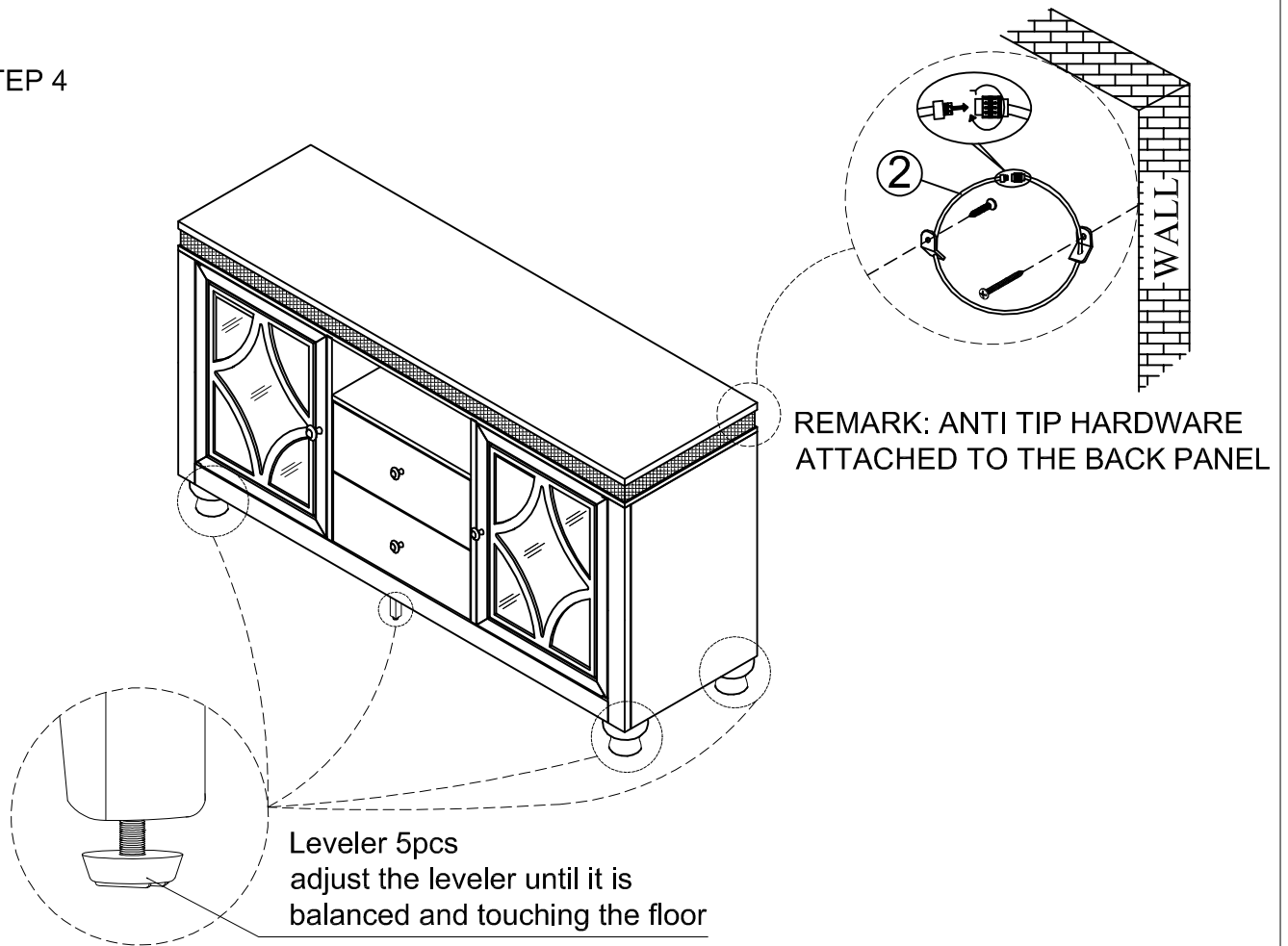
 Only tighten all bolts when all bolts aligned with bolt inserts



Assembly Instruction For

60" TV STAND
LA-4900-15-TV2

STEP 4



COMPLETED

