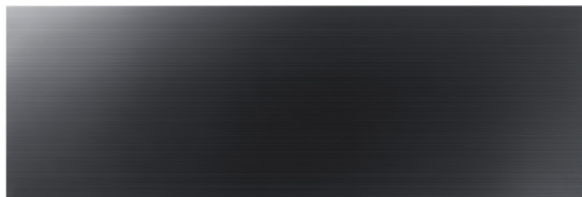


DWR30M977W
30-INCH WARMING DRAWER
 MODERNIST COLLECTION



AVAILABLE MODELS

- DWR30M977WS - 30" Warming Drawer, Stainless Steel
- DWR30M977WM - 30" Warming Drawer, Graphite Stainless Steel

FEATURES & BENEFITS

- Four timer settings plus an infinite mode ensure that every dish is timed the way you intended.
- Four temperature levels: Proof, Low, Medium and High for precise warming levels.
- Electronic controls allow you to regulate time, temperature and humidity, ensuring perfect results.
- Moist/Crisp selector.
- Large capacity for oversized dishes.
- 500 watt heating element.

FEATURES

Push to Open Drawer	Yes
Telescopic Rail	Yes
Anti Slip Mat	Yes
Automatic Shut-Off Timer	Yes
Half Racks	Yes

CONTROLS

Touch Control	Yes - Electric (LED Display)
Settings	1 Hr, 2 Hrs, 3 Hrs, 4 Hrs, Set Time (Max 12 Hrs.)

MENU

Bread Proofing	Yes
Slow Cooking	Yes
Food Warming	Yes
Rapid Heat Up	Yes

MODES

Proof (Degrees - Fahrenheit)	85-120
Low (Degrees - Fahrenheit)	121-160
Medium (Degrees - Fahrenheit)	161-190
High (Degrees - Fahrenheit)	191-220

TECHNICAL DETAILS

Capacity (cu. ft.)	2.0
Heat Element	500W
Circuit Breaker (A)	15
Volts (V)	120
Frequency (Hz)	60
Energy Source	Electric

DIMENSIONS & WEIGHT

Appliance Dimensions (H x W x D) (in.)	18" x 29 7/8" x 24"
Upper Cabinet Cutout (W) (in.)	30"
Weight	53 lbs (24kg)

WARRANTY

Limited, Parts and Labor	1 Year
--------------------------	--------

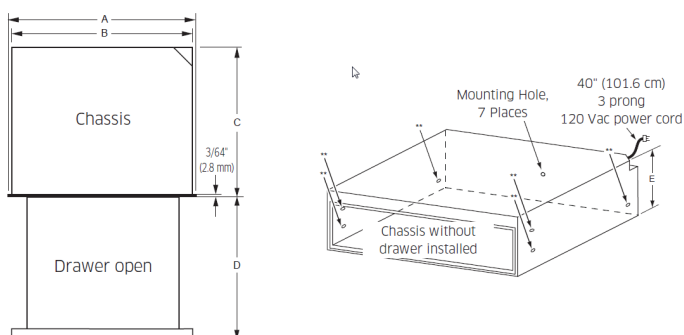
DWR30M977W

30-INCH WARMING DRAWER

MODERNIST COLLECTION

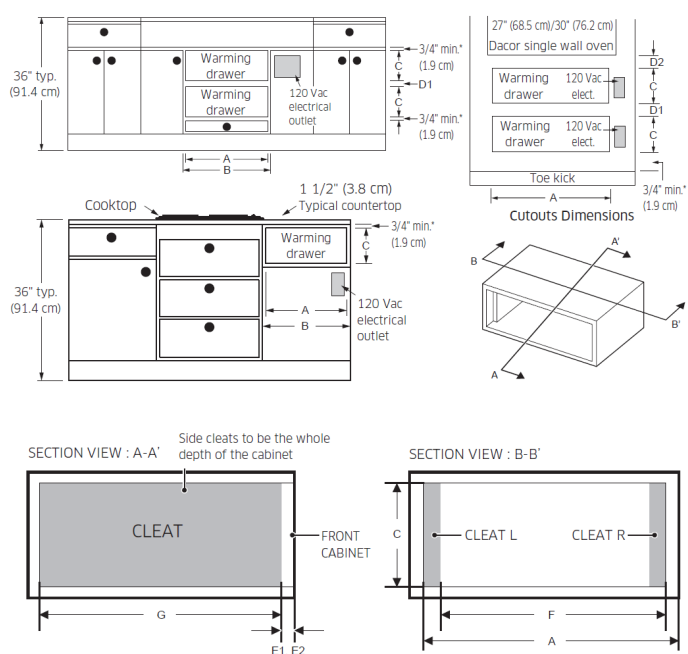
dacor®

APPLIANCE DIMENSIONS



A - Drawer Face Width	29 5/8" (75.2cm)
B - Chassis Width	27 5/8" (70.3cm)
C - Chassis Face Width	22 13/16" (57.7cm)
D - Drawer Face Height	20" (51cm)
E - Chassis Depth	9" (22.8cm)

CUTOUT DIMENSIONS



A - Cutout Width	30" (76.2cm)
B - Min. Width to Adjacent Doors/Drawers	30" (76.2cm)
C - Cutout Height	10 3/8" (26.3cm)
D1 - Min. Vertical Gap Between Warming Drawer Cutouts	1 1/4" (3.2cm)
D2 - Min. Vertical Gap Between Dacor Wall Oven	1 1/2" (3.8cm)
E1 - Flush to Drawer Front +	1 1/8" (2.9cm)
E2 - Flush to Cabinet Frame ++	1 7/8" (4.6cm)
F - Flush to Cabinet Frame	27 7/8" (70.8cm)
G - Min. Cutout Depth	24 1/2" (62.3cm) + Dim. for E1 install, see E2 for alternate installation

+ Dimension with 3/4" (19.05 cm) thick cabinet drawer door, adjust (E1) depth for a different cabinet drawer thickness.

++ Requires the cabinet depth dimension "G" to be 24 5/8" (62.5 cm).

DETAIL DOOR AND CHASSIS DIMENSIONS

