



# AIR SWITCH INSTALLATION

Contemporary Model # 3010

Traditional Model # 4010

Industrial Model # 9010

## BEFORE YOU BEGIN YOUR INSTALLATION:



Turn off water supply.

### REQUIRED TOOLS:



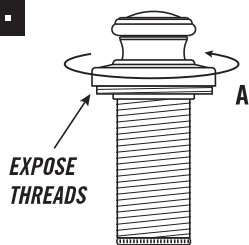
1. Phillips Screwdriver

### PARTS INCLUDED:

USM1375

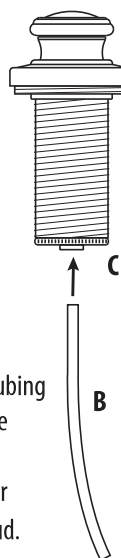
Undersink Mounting Hardware  
(1-1/4")

1.



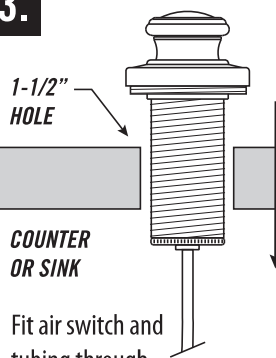
Before inserting air switch into hole, loosen switch base (A) until threads are exposed.

2.



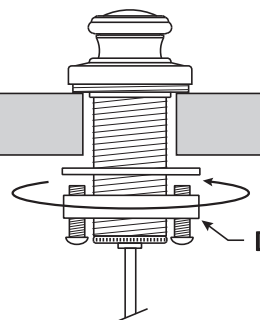
Slide clear tubing (B) into tube fitting (C) at bottom of air switch shroud.

3.



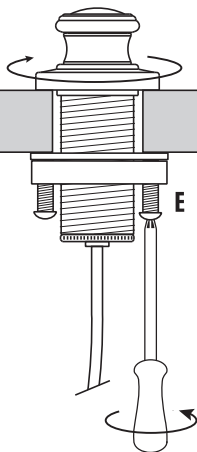
Fit air switch and tubing through 1-1/2" hole on counter or sink.  
*(No plumbers putty is required. O-ring seals base).*

4.



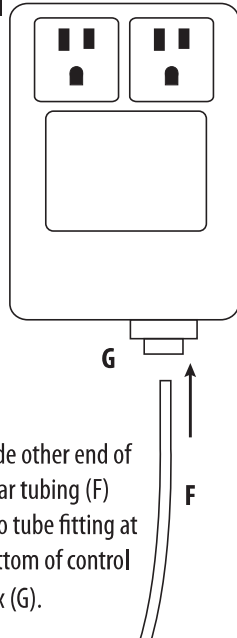
Slide washer up then thread the clamp nut onto threaded shroud. Hand tighten nut to underside of sink or counter until snug.

5.



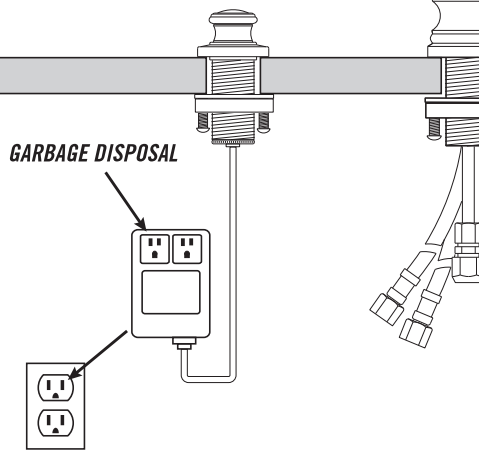
Tighten clamp screws (C) securely with screwdriver. Hand tighten switch base back down to cover threads.

6.



Slide other end of clear tubing (F) into tube fitting at bottom of control box (G).

7.



Plug control box into undersink electrical outlet. Garbage disposal can be plugged into either dual outlet.