



# 36-Inch Wide Side-by-Side Refrigerator - 25 cu. ft.

MSS25N4MKZ

Available Finishes/Colours



MSS25N4MKZ  
FingerPrint Resistant Stainless Steel

Dimensions	
Depth	33 5/8
Height	69 5/8
Width	35 7/8

AHAM Volumes And Shelf Area	
Freezer Volume (Cu Ft)	9.61
Refrigerator Volume (Cu Ft)	15.32
Total Volume (Cu Ft)	24.9

Details	
Advance Foam Insulation	NA
Cooling Type	Single Evaporator
Counter Depth	No

Controls	
Control Type	Electronic
Air Filter Indicator/Reset	No

Controls	
Automatic Defrost	Yes
Door Ajar/Open Alarm	No
LCD Touch Screen	No
Control Lockout	No
Control Location	Interior Up Front
Water Filter Indicator/Reset	No
Max Cool/Fast Cool	No

Exterior	
Base Grille Color	Grey
Cabinet Color	Grey
Cabinet Finish	Textured

Top Features

Non-dispense layout

Fingerprint resistant stainless steel

Gallon door bins

Manuals & Literature:



[Dimension Guide](#)



[Energy Guide](#)



[Installation Guide](#)



[Owner Manual](#)



[Warranty Information](#)



Because Whirlpool Corporation policy includes a continuous commitment to improve our products, we reserve the right to change materials and specifications without notice. Dimensions are for planning purposes only. For complete details, see Installation Instructions packed with product. Specifications subject to change without notice.

# DIMENSION SPECIFICATIONS for: 25 cu. ft. Side by Side Refrigerator/Freezer

W11126832

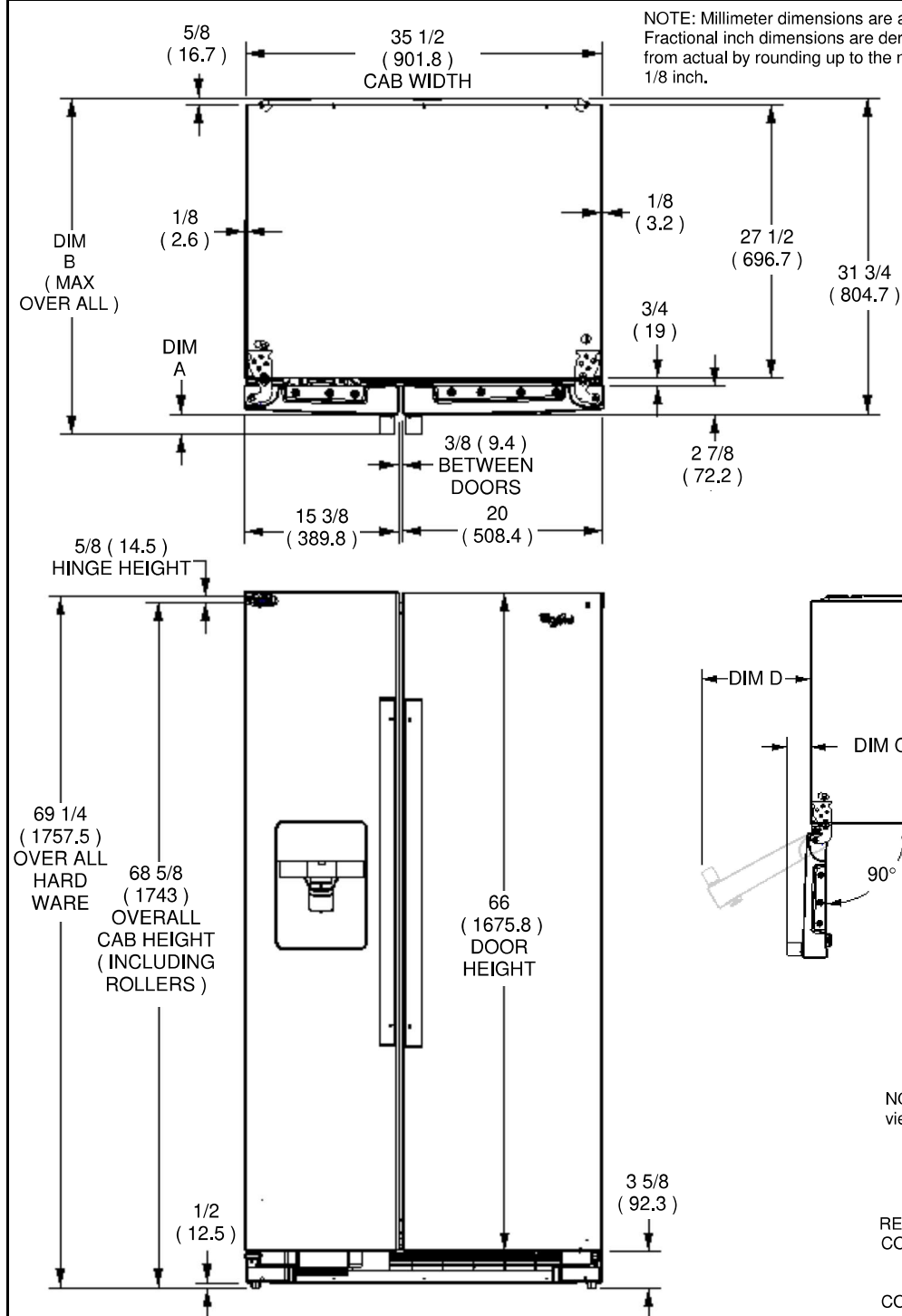


**DIMENSIONS ARE FRACTIONAL INCHES AND MILLIMETERS IN PARENTHESES ( )**

MINIMUM CABINET OPENING:

WIDTH 36 ( 914.4 ) - inside baseboard trim

HEIGHT 69 1/8 ( 1755.7 ) - w/ half depth upper cabinets  
70 3/8 ( 1784.3 ) - w/ full depth upper cabinets



NOTE: Doors indicated by phantom lines in the view above are shown opened to the door stops.

## INTERIOR DIMENSIONS

	WIDTH	HEIGHT
REFRIGERATOR COMPARTMENT	17 1/2 ( 445.5 )	58 7/8 ( 1520 )
FREEZER COMPARTMENT	12 1/2 ( 317 )	59 3/8 ( 1508.3 )

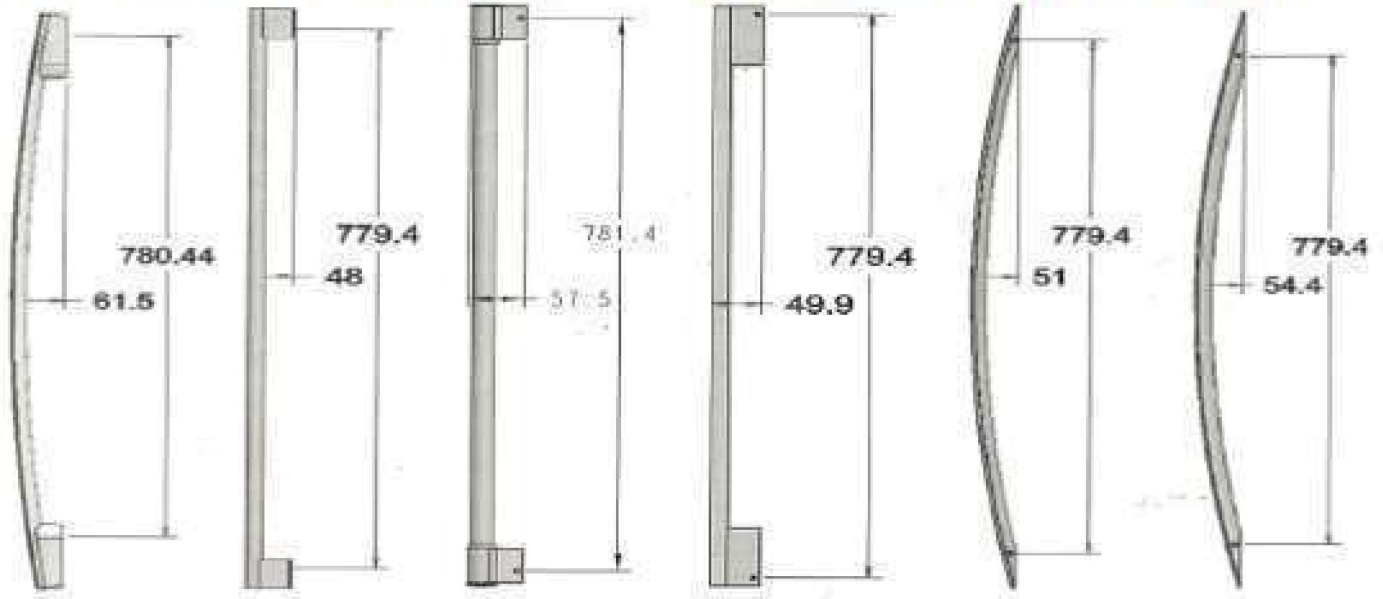
## TABULATION

HANDLE GROUP	DIM A HANDLE HEIGHT FROM FACE OF DOOR	DIM B MAX OVERALL DEPTH	DIM C ( MAXIMUM )	DIM D ( MAXIMUM )	DIM E ( MAXIMUM )
GROUP 1	2 ( 51 ) W10874778	33 5/8 ( 855.4 )	2 7/8 ( 73.8 )	13 3/8 ( 339.6 )	17 ( 433.2 )
GROUP 2	2 ( 50 ) W10874779	33 5/8 ( 854.5 )	2 7/8 ( 73 )	13 ( 329.5 )	17 ( 433.4 )
GROUP 3	1 7/8 ( 48 ) W10202819	33 5/8 ( 852.7 )	2 3/4 ( 71 )	13 ( 329.7 )	17 ( 433.6 )
GROUP 4	2 1/8 ( 54.5 ) W10886627	33 7/8 ( 859 )	3 ( 77.5 )	13 3/8 ( 338.6 )	17 1/2 ( 442.8 )
GROUP 5	2 1/4 ( 57.5 ) W10836782	34 ( 864 )	3 1/8 ( 80 )	13 1/8 ( 334.6 )	17 1/4 ( 438 )
GROUP 6	2 3/8 ( 61.5 ) W10127803	34 1/8 ( 866 )	3 3/8 ( 84.6 )	13 1/2 ( 341.2 )	17 1/2 ( 445 )

## NOTES:

- Door opening required to move product ( with doors and base grille removed ):  
29 1/4 in. ( 741.9 mm )
- Carton Size:  
71 3/4 in. High x 38 1/8 in. Wide x 34 3/4 in. Deep  
( 1820.8 mm ) x ( 967.7 mm ) x ( 882.4 mm )

W10127803   W10202819   W10836783   W10874799   W10874798   W10886627



GROUP	NAME	BRAND	PART NUMBER
1	BREATHE	WHIRLPOOL	W10874798
2	ASPIRE	WHIRLPOOL	W10874799
3	NUTID	IKEA	W10202819
4	KPX2	KENMORE	W10886627
5	STRAIGHT	MAYTAG	W10836783
6	MID LENGTH	AMANA	W10227803

REV	CHANGE	EN NO.	DATE	REV	CHANGE	EN NO.	DATE
A	Release W11126832	2106206	29-May-2017				
B	Add Handles Group in sheet 2	2169720	09-Sep-2018				