


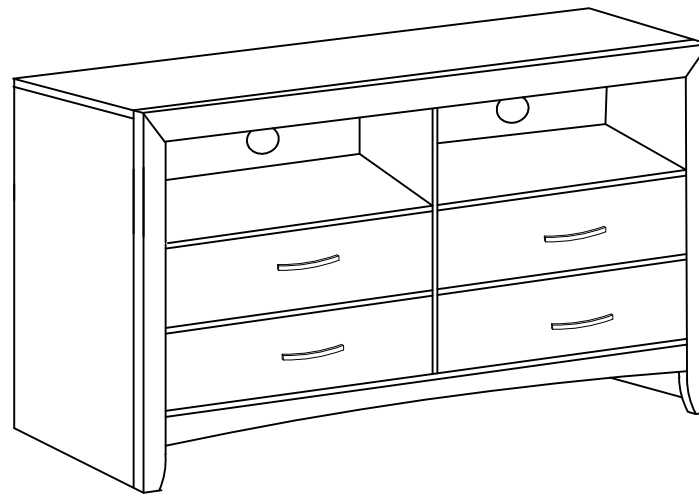
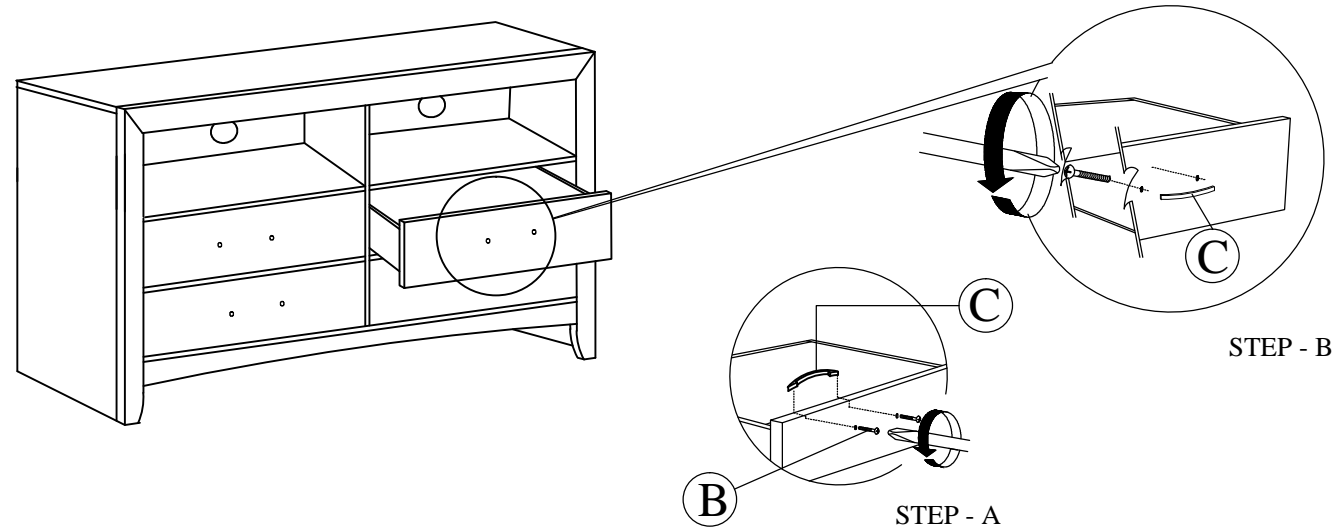


ASSEMBLY INSTRUCTIONS

CROWNMARK : 0061A
(TV DRESSER)

NO	PART LIST	QTY
A	TV DRESSER 	1 PC
NO	HARDWARE LIST	QTY
B	HANDLE SCREW 28MM 	8 PCS
C	HANDLE 	4 PCS

STEP 1 : Remove HANDLE (C) using a Philips head screw driver as shown in illustration STEP - A. Re-install the HANDLE (C) as per diagram STEP - B. Repeat STEP - A STEP - B until HANDLE (C) are attached correctly.



COMPLETED ASSEMBLY

NOTE : MUST TIGHTEN SCREWS **PERIODICALLY** WITH USE SCREW WILL BECOME LOOSE CHECK TIGHTNESS OF ALL SCREW EVERY 6-8 WEEKS.