



DMR24M977WS/DA – Silver Stainless \$1,799  
DMR24M977WM/DA – Graphite Stainless \$1,899

Features & Benefits

- Motorized drawer
- 10 preset modes
- Smart moisture sensor
- Multi-sequence cooking
- Automatic start
- Keep warm
- Electronic control panel

Weights & Dimensions	
NET WEIGHT (LBS.)	72
SHIPPING WEIGHT (LBS.)	84
PRODUCT DIMENSIONS (W X H X D IN INCHES)	23 7⁄8 x 15 7⁄8 x 23 1⁄4
STANDARD CUTOUT REQUIRED (W X H X D IN INCHES)	22 1⁄8 x 15 5⁄16 x 23 1⁄2
FLUSH CUTOUT REQUIRED (W X H X D IN INCHES)	24 3⁄16 (min.) to 24 1⁄2 (max.) x 16 7⁄8 x 23 1⁄2

Technical Details	
ELECTRICAL REQUIREMENTS	120V, 60 Hz, 15A

Warranty	
FULL COVERAGE	2 Years

Accessories (Optional)		
ADMRF24S	Flush Installation Kit, Silver Stainless	\$69
ADMRF24M	Flush Installation Kit, Graphite Stainless	\$79

Features & Benefits

- Motorized drawer
- 10 preset modes
- Smart moisture sensor
- Multi-sequence cooking
- Automatic start
- Keep warm
- Electronic control panel

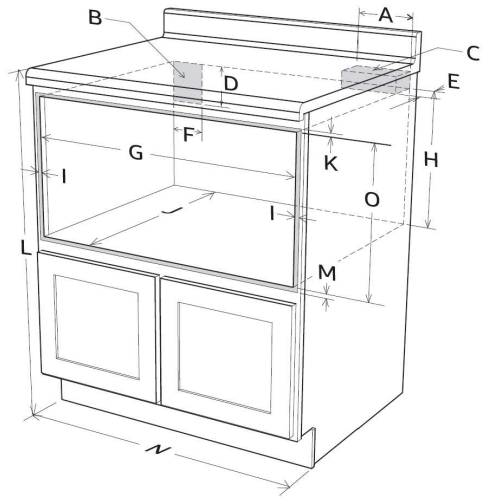
Controls	
CONTROL TYPE	Glass Touch
CLOCK	Yes
CHILD LOCK	Yes
SABBATH MODE	Yes

Microwave Oven	
MICROWAVE CAPACITY (CU. FT.)	1.2
MICROWAVE POWER	950W
SENSOR COOK	Yes
CONVECTION	No
LIGHTING	Halogen

# 24-Inch Drawer Microwave



Appliance Dimensions	
A - ANTI-TIP BLOCK LENGTH (IN)	6
B - ELECTRICAL OUTLET LOCATION (IN)	–
C - ANTI-TIP BLOCK (IN)	–
D - OUTLET LOCATION HEIGHT (IN)	5
E - ANTI-TIP BLOCK WIDTH (IN)	3 ½
F - OUTLET LOCATION WIDTH (IN)	4
G - CUTOUT-OPENING WIDTH (IN)	22 ⅝
H - CUTOUT FLOOR TO BLOCK BOTTOM (IN)	14 ⅜
I - MINIMUM OVERLAP ALLOWANCE, SIDES (IN)	⅞
J - MINIMUM CUTOUT DEPTH (IN)	23 ½
K - MINIMUM OVERLAP ALLOWANCE (IN)	⅜
L - NOMINAL COUNTERTOP HEIGHT (IN)	36
M - MINIMUM OVERLAP ALLOWANCE, BOTTOM (IN)	⅛
N - MINIMUM CABINET WIDTH (IN)	24
O - CUTOUT HEIGHT (IN)	15 ⅝



Appliance Dimensions	
A - OVERALL CHASSIS WIDTH (IN)	21 ⅝
B - WIDTH OF CHASSIS NOTCH (IN)	4 ⅞
C - HEIGHT OF CHASSIS NOTCH (IN)	1 ¾
D - CHASSIS DEPTH (IN)	21 ⅞
E - MICROWAVE FACE WIDTH (IN)	30
F - WITH MODERNIST HANDLE (IN)	15 ⅞
G - CHASSIS HEIGHT (IN)	14 ⅜
H - DOOR FACE THICKNESS (IN)	1 ¼
I - AUTOMATIC DRAWER-OPEN DEPTH (IN)	15
J - CHASSIS NOTCH WIDTH (IN)	4

