

# caracole



## VICTORIA CHAIR

9270-004-a

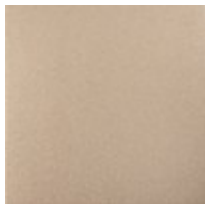
**COLLECTION:** VICTORIA

**DIMENSIONS:** 32.5W x 36D x 34H

This shapely chair adds a note of effortless glamour in a cream performance basketweave with a subtle luster. Gently sloping arms lend a contemporary take on the classic English arm for a look that's fresh, yet familiar. Tapered legs in a Sparkling Argent finish add to its shimmer. Sofa and sectional also available.

**CONSTRUCTION:** No sag seat. | Blendown cushion.

**FINISH:**



Sparkling\_Argent

**FABRIC:**



Body Fabric: 2810-  
35CC-P  
Performance