



8 cu.ft. Upright Freezer



MUF80W | MUF80BLS

Congratulations on the purchase of your new Marathon Freezer!

To activate your Warranty, please register your appliance at **www.stirlingmarathon.com** or by completing and mailing the enclosed Warranty Registration Card. We are confident you will have years of hassle-free enjoyment and ask that you please retain the Use & Care Guide for future reference and your safety.






Before installing please, read your Use & Care Guide carefully and pay special attention to the Safety & Warning information outlined in the following pages.

For immediate assistance: 1-844-309-9777
www.stirlingmarathon.com

Appliance Safety

Your safety and the safety of others are very important.

We have provided many important safety messages in this manual and on your appliance. Always read and obey all safety messages.

Icon	Caption	Description
	WARNING	Risk of serious injury or death
	RISK OF ELECTRIC SHOCK	Dangerous voltage
	FIRE	Risk of fire
	ATTENTION	Risk of injury or material damage
	IMPORTANT/NOTE	Information on correct operation of the system

Disposal of your old machine



The symbol on the product or on its packaging indicates that this product may not be treated as household waste. Instead it shall be handed over to the applicable collection point for the recycling of electrical and electronic equipment. By ensuring this product is disposed of correctly, you will help prevent potential negative consequences for the environment and human health, which could otherwise be caused by inappropriate waste handling of this product. For more detailed information about recycling of this product, please contact your local city office, your household waste disposal service or the shop where you purchased the product.

Important Safety Information



WARNING



Before installing please read your Use & Care Guide carefully and pay special attention to the Safety and Warning information outlined in the following pages.

To reduce the risk of fire, electrical shock, or injury follow these basic precautions when using your appliance.

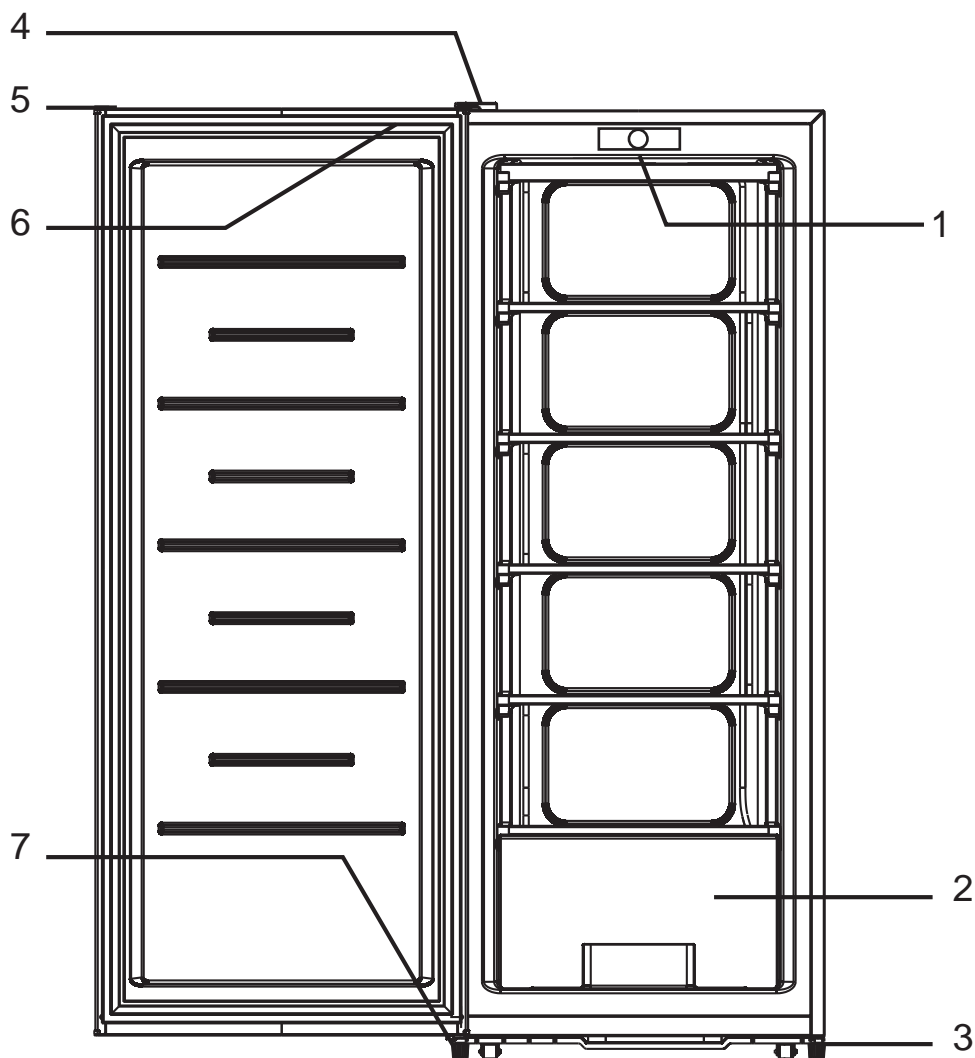
- 1) **WARNING**----Keep ventilation openings, in the appliance enclosure or built-in structure, clear of obstruction.
- 2) **WARNING**----Do not use mechanical devices or other means to accelerate the defrosting process, other than those recommended by the manufacturer.
- 3) **WARNING**----Do not use electrical appliances inside the appliance
- 4) **WARNING**----DANGER: Never allow children to play with, operate, or crawl inside the appliance. Risk of child entrapment.

Before you discard or recycle your old freezer

- Completely remove the doors
 - Leaves the shelves in place so that children not may easily climb inside
- 5) **WARNING**----**GROUNDING INSTRUCTIONS** This appliance must be grounded. In the event of an electrical short circuit, grounding reduces the risk of electrical shock by providing an escape wire for the electrical current. This appliance is equipped with a cord having a grounding wire with a grounding plug. The plug must be plugged into an outlet that is properly installed and grounded.
 - 6) **DO NOT USE AN EXTENSION CORD**
 - 7) Use an exclusive 115V wall outlet. Do not connect your refrigerator to extension cords or together with any other appliance in the same wall outlet. Do not splice the cord.
 - 8) Always unplug before any maintenance or service on the appliance.
 - 9) If a component is damaged, it must be replaced by the manufacturer, its service agent or similar qualified persons to avoid a hazard.
 - 10) Follow local regulations regarding disposal of the appliance due to flammable refrigerant and blowing gas. All refrigeration products contain refrigerants, which under the guidelines of federal law must be removed before disposal. It is the consumer's responsibility to comply with federal and local regulations when disposing of this product.
 - 11) This appliance is intended to be used in household and similar environment such as:
 - Staff kitchen, workshop, office and other working environments;
 - Farmhouses and by clients in hotels, motels and other residential type environments;
 - Bed and breakfast type environments;
 - Catering and similar non-retail applications.
 - 12) Do not store or use gasoline or any inflammable liquors and liquids inside or in the vicinity of the refrigerator.
 - 13) Do not use an extension cord with this appliance. If the power cord is too short, have a qualified electrician install an outlet near the appliance. The use of an extension can negatively affect the appliance's performance.

Model Description

1. Temperature Control
2. Crisper
3. Adjustable legs
4. Top hinge cover
5. Reversible door plug
6. Gasket/Door Seal
7. Bottom hinge

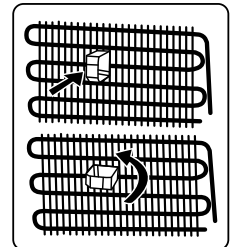


This image is only for information about the parts of the appliance.
Parts may vary according to the product.

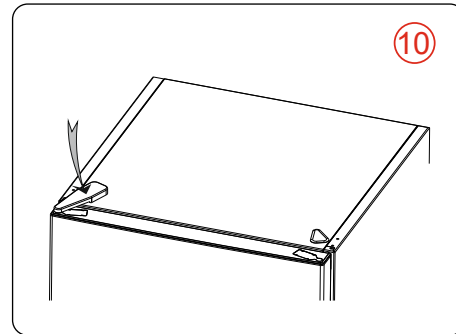
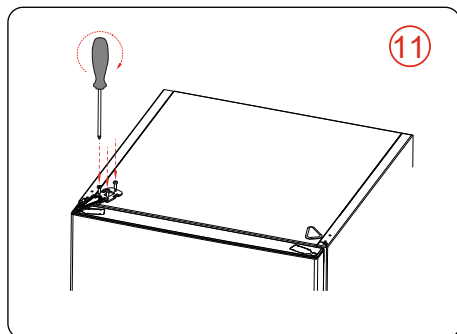
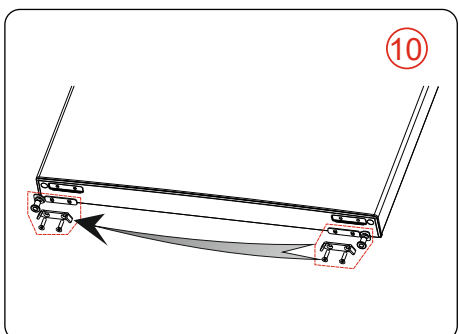
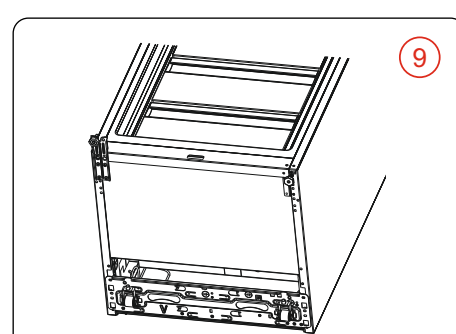
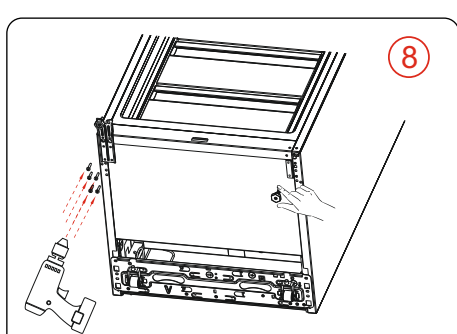
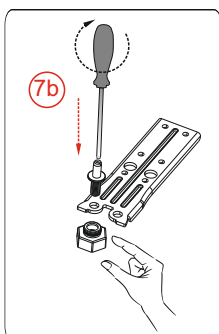
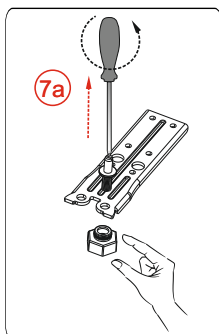
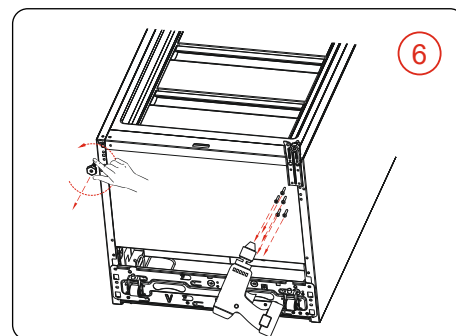
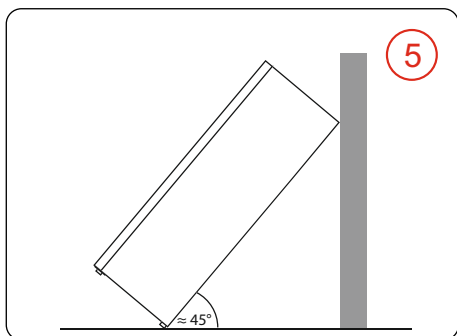
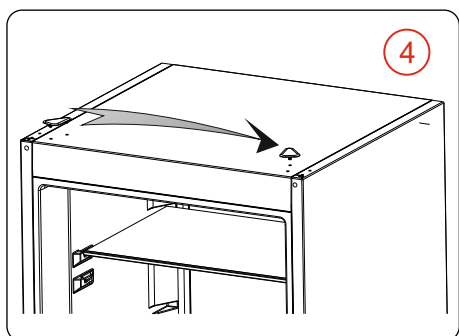
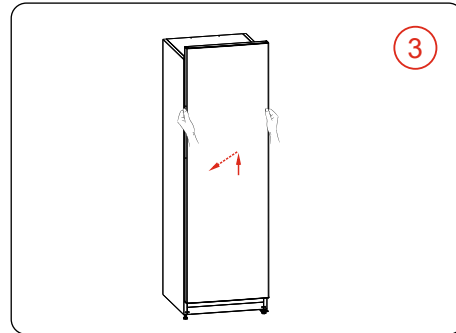
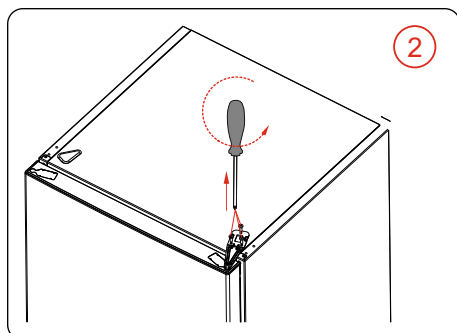
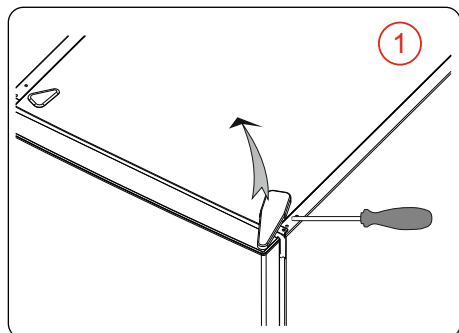
Installation

Installation guideline

- Use two or more people to move and install the appliance. Failure to do so can result in back or other injuries.
- Locate the refrigerator away from direct sunlight and sources of heat (stove, heater, radiator, etc.). Direct sunlight may affect the acrylic coating and heat sources may increase electrical consumption. Do not use where the room temperature is below -15°C or in high heat/humidity locations.
- **This freezer is not designed or approved for outdoor use.**
- The appliance must be installed with all electrical and drain connections following with state and local codes. A standard electrical supply (115 V AC only, 60 Hz), properly grounded following the National Electrical Code and local codes and ordinances are required.
- The fuse (or circuit breaker) size should be 15 amperes.
- It is important for the appliance to be levelled to work properly. You may need to make several adjustments to level it.
- Plug into a grounded 3-prong outlet, do not remove grounding prong, do not use an adapter, and do not use an extension cord.
- We recommend that your unit be on its own circuit. Please make sure to use a receptacle not controlled by a light switch
- Place your unit on a floor that is strong enough to support the unit when it is fully loaded. To level your unit, adjust the levelling legs at the bottom of the unit.
- Install the plastic distance guide(s) on the condenser (black vanes at the rear of the appliance) by turning it 90° (as shown in the figure) to prevent the condenser from touching the wall.
- Allow 3 inches of space between the back and sides of the unit, which allows the proper air circulation to cool the compressor and condenser. Clearance of at least 6 inches is required at the top of your appliance. Do not place anything on top of your appliance.
- Avoid locating the unit in moist areas.
- Before connecting the unit to the power source, let it stand upright for approximately 2 hours. This will reduce the possibility of a malfunction in the cooling system from handling during transportation.



How to reverse your freezer door





MUF80W | MUF80BLS

Before first use

- Remove the exterior and interior packing.
- Clean the interior surface with lukewarm water using a soft cloth. Do not use solvent-based cleaning agents or abrasives on the interior. These cleaners may damage or discolour the interior.
- After plugging the appliance into a wall outlet, allow the unit to cool down for 2-3 hours before placing food in the refrigerator compartment.

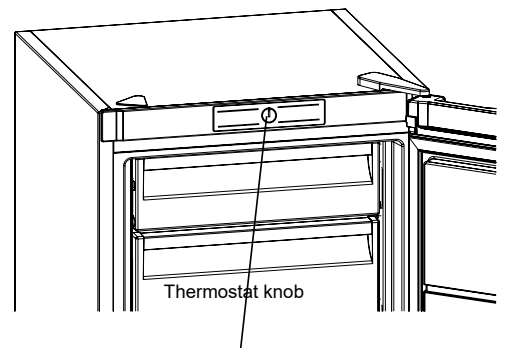
Using the appliance

Thermostat Setting

Temperature can be adjusted by rotating the knob. The higher the numbers, the colder the temperature setting.
(Maximum numbers on the thermostat depends on your product.)



Important note: Do not rotate the knob beyond position 1, it will stop your appliance from working.



- If there is a SF option on the dial, this is a setting used to freeze fresh food quickly. Your appliance will automatically return to its last used thermostat setting once your food is frozen.

Cleaning and maintenance



Disconnect the unit from the power supply before cleaning.



- Do not wash your appliance by pouring water on it.
- Do not use abrasive products, detergents or soaps for cleaning the appliance. After washing, rinse with clean water and dry carefully. When you have finished cleaning, reconnect the plug to the mains supply with dry hands.

- Make sure that no water enters the lamp housing and other electrical components.
- The appliance should be cleaned regularly using a solution of bicarbonate of soda and lukewarm water.
- Clean the accessories separately by hand with soap and water. Do not wash in a dish washer.

Defrosting

Small amounts of frost will accumulate inside the freezer over time. It is essential to ensure that no frost or ice is allowed to form in places where it will affect the close fitting of the door seal. This might allow air to penetrate the cabinet, encouraging continuous running of the compressor. Thin frost formation is common and can be removed with a plastic scraper. Do not use metal or sharp scrapers, mechanical devices or other means to accelerate the defrosting process. Remove all dislodged frost from the cabinet floor. It is not necessary to switch off the appliance for the removal of thin frost build up.

- For the removal of heavy ice build up, unplug the freezer and empty the contents
- Do not use metal or sharp scrapers, mechanical devices or other means to accelerate the defrosting process.
- Dry the inside of the compartment with a sponge or a clean cloth.
- To accelerate the defrosting process, place one or more bowls of warm water in the freezer compartment.
- Examine the contents when replacing them in the freezer and if some of the packages have thawed out, they should be eaten within 24 hours, or be cooked and re-frozen.
- After defrosting is complete, clean the inside of the appliance with a solution of warm water and a little bicarbonate of soda, then dry thoroughly. Wash all removable parts in the same way and reassemble. Reconnect the appliance to the main supply and leave for 2 to 3 hours on setting number MAX before introducing the food back into the freezer.

Transportation and Changing Positioning


- The original packaging and foam may be kept for re-transportation (optional).
- Fasten your appliance with thick packaging, bands or strong cords and
- follow the instructions for transportation on the packaging.
- Remove all movable parts or fix them into the appliance against shocks
- using bands when re-positioning or transporting.



Always carry your appliance in the upright position.

Important Warning

- ⚠ Keep ventilation openings, in the appliance enclosure or in the built-in structure, clear of obstruction.
- ⚠ Do not use mechanical devices or other means to accelerate the defrosting process, other than those recommended by the manufacturer.
- ⚠ Do not change or damage the refrigerant circuit.
- ⚠ Do not store explosive substances such as aerosol cans with a flammable propellant in this appliance. During transportation and installation of the appliance, be certain that none of the components of the refrigerant circuit become damaged.
- ⚠ It is dangerous to alter the specifications or modify this product in any way. Any damage to the cord may cause a short circuit, fire and/or electric shock.
- ⚠ This appliance is intended to be used in residential household, office or light commercial applications such as Hotels and College Dorms.
- ⚠ All electrical components (plug, power cord, compressor and, etc.) must be replaced by a certified service agent or qualified service personnel.
- ⚠ The refrigerant contained within the compressor of the appliance is isobutene (R600a) which is environmentally friendly but flammable.
- ⚠ Make sure that the power cord is not crushed or damaged at the back of the appliance. A crushed or damaged power cord may overheat and cause a fire.
- ⚠ The power cord must not be lengthened.
- ⚠ Make sure that you can come to the power cord of the appliance Do not pull the mains cable.
- ⚠ If the electrical outlet is loose, do not insert the power plug. There is a risk of electric shock or fire.
- ⚠ You must not operate the appliance without the lamp.
- ⚠ This appliance is heavy. Care should be taken when moving it.
- ⚠ Do not remove nor touch items from the freezer compartment if your hands are damp/wet, as this could cause skin abrasions or frost/freezer burns.
- ⚠ Avoid prolonged exposure of the appliance to direct sunlight.

 ⚠ Locate the freezer away from direct sunlight and sources of heat (stove, heater, radiator, etc.). Direct sunlight may affect the acrylic coating and heat sources may increase electrical consumption. Do not use where the room temperature is below -15°C, or in high heat/humidity locations. **This freezer is not designed or approved for outdoor use.**

Troubleshooting

You can solve many common refrigerator problems easily, saving you the cost of a possible service call. Try the suggestions below to see if you can solve the problem before calling for service.

<i>Problem</i>	<i>Possible Causes</i>
The freezer does not operate.	<ul style="list-style-type: none"> •The power cord is unplugged. •The circuit breaker is tripped/fuse blown. •Is the green LED Power ON light illuminated - no plugged in?
The compressor turns on and off	<ul style="list-style-type: none"> •The room temperature is warmer than normal •The door is left open or is frequently opened. •The freezer does not have the correct clearances. •The freezer has recently been disconnected for a long period of time.
The freezer seems to make too much noise	<ul style="list-style-type: none"> •The rattling noise may come from the flow of the refrigerant, which is normal. •As each cycle ends, you may hear gurgling sounds caused by the flow of refrigerant in your unit. •Contraction and expansion of the inside walls may cause popping and crackling noises. •The unit is not level.
Vibrating or rattling. (slight vibration is normal)	<ul style="list-style-type: none"> •Levelling legs need adjusting. •Freezer is placed on an uneven or weak surface. •The freezer is touching the wall. Re-level the freezer and move it away from the wall.
The temperature of the external of the unit is warm.	<ul style="list-style-type: none"> •The exterior refrigerator walls can be as much as 30°F warmer than room temperature. •This is normal while the compressor works to transfer heat from inside the freezer cabinet.
The unit is frosting up quickly.	<ul style="list-style-type: none"> •The door is left open or is frequently opened.
The door is difficult to open	<ul style="list-style-type: none"> •The unit was recently opened and is going into vacuum sealing. •Wait 5 minutes until the temperature stabilizes in the freezer or you can gently use your fingers to push on the door seal (gasket) to break the seal, making it easy to open
The door will not close properly.	<ul style="list-style-type: none"> •The freezer is not on a level surface. •The gasket is dirty. •A storage basket is out of position.

For any questions or concerns, please contact us at customerservice@stirlingmarathon.com or visit us at www.stirlingmarathon.com



2 Years Limited Warranty

When operated and maintained according to the instructions in the Use & Care Guide, MARATHON a registered trademark of Stirling Marathon Limited agrees to repair or replace this product for 2 years from the date of original purchase and/or agrees to pay for parts and service/labour required to correct defects in materials or workmanship. Any Service must be approved and provided by an Authorized Stirling Marathon Service provider. YOUR EXCLUSIVE REMEDY UNDER THIS LIMITED WARRANTY SHALL BE PRODUCT REPAIR OR REPLACEMENT AT THE SOLE DISCRETION OF STIRLING MARATHON LIMITED AS PROVIDED HEREIN. This limited warranty is valid only in Canada and the Continental United States with proof of original purchase and confirmed warranty registration.

TERMS OF WARRANTY BY PRODUCT	Capacity/Type	Warranty Type
Refrigeration & Freezer	Less than 6 cu.ft	Carry-In
Refrigeration & Freezer	Greater than 6 cu.ft.	In-Home
Electric & Gas Ranges	All Sizes	In-Home

How to Obtain Service

Carry-In: The original purchaser must deliver or ship the defective product to an authorized Stirling Marathon Service present a copy of the original bill of sale or Warranty Registration Confirmation.

In-Home: Contact Authorized Service Center and provide a copy of the Original bill of sale or Warranty Registration Card. If you are in a remote area or the closest Authorized Service Center is further than 100 km (60 miles), you will be required to deliver the appliance to the closest Service Center at your expense.

Stirling Marathon is not responsible or liable for any spoilage or damage to food or other contents of this appliance, whether due to any defect of the appliance, or its use, whether proper or improper.

Items Excluded from Warranty

- Damages due to shipping or improper installation.
- Damages due to misuse or abuse.
- Content losses due to failure of the unit.
- Commercial or Rental Use Limited to 90 days Parts & Labour.
- Plastic parts such as door bins, panels, door shelves, racks, light bulbs, etc.
- Punctures to the evaporator system due to improper defrosting of the unit.
- Service or Repair by a unauthorized service technicians.
- Service calls that do not involve defects in material and workmanship such as instruction on the proper use of the product, door reversal or improper installation.
- Replacement or resetting of house fuses or circuit breakers.
- Delivery costs incurred as the result of a unit that fails.
- Expenses for travel and transportation for product service if your appliance is located in a remote area where service by an unauthorized service technician is not available.
- The removal and reinstallation of your appliance if it is not installed correctly or is in a inaccessible location, as per the published installation instructions.
- Liability under this warranty is limited to repair, replacement or refund. If a replacement unit is not available or the unit cannot be repaired, liability is limited to the actual.
- Purchase price paid by the consumer.
- This warranty applies only to the original purchaser and does not extend to any subsequent owner(s) and is non-transferable.
- No warranty or insurance herein contained or set out shall apply when damage or repair is caused by any of the following: accident, alteration, abuse or misuse of the appliance such as inadequate air circulation in the room or abnormal operating conditions (extremely high or low room temperature).
- Use for commercial or industrial purposes (i.e. If the appliance is not installed in a domestic residence). Fire, water damage, theft, war, riot, hostility, acts of God such as hurricanes, floods etc.
- Service calls resulting in customer education.
- Improper installation (ie. Building-in of a free-standing appliance or using an appliance outdoors that is not approved for outdoor application).

For Service or Assistance please contact us at:
warranty@stirlingmarathon.com or visit us at www.stirlingmarathon.com.