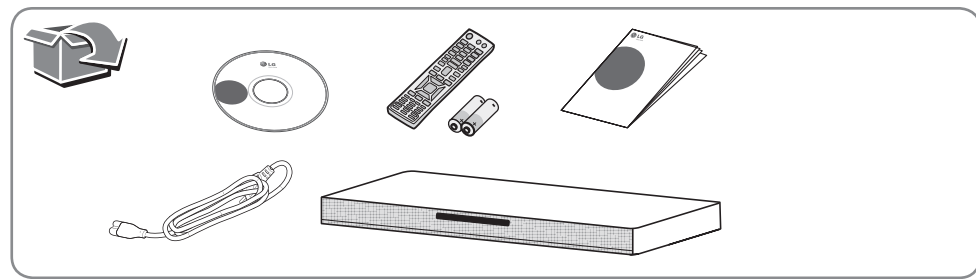


SoundPlate

LAB550H

ENGLISH | SIMPLE MANUAL

To view the instructions of advanced features, visit <http://www.lg.com> and then download Owner's Manual. Some of the content in this manual may differ from your unit.

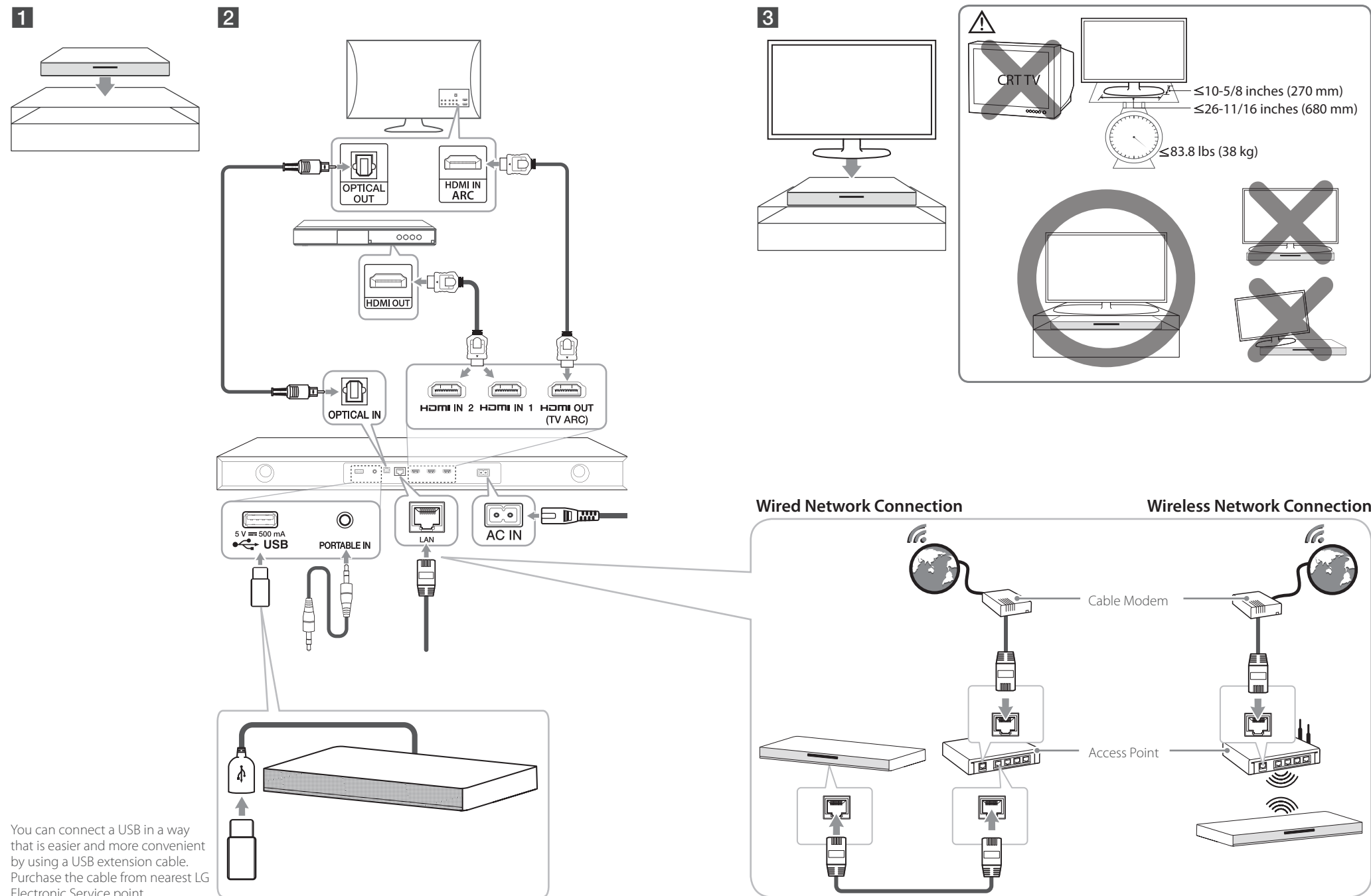


www.lg.com
Printed in China

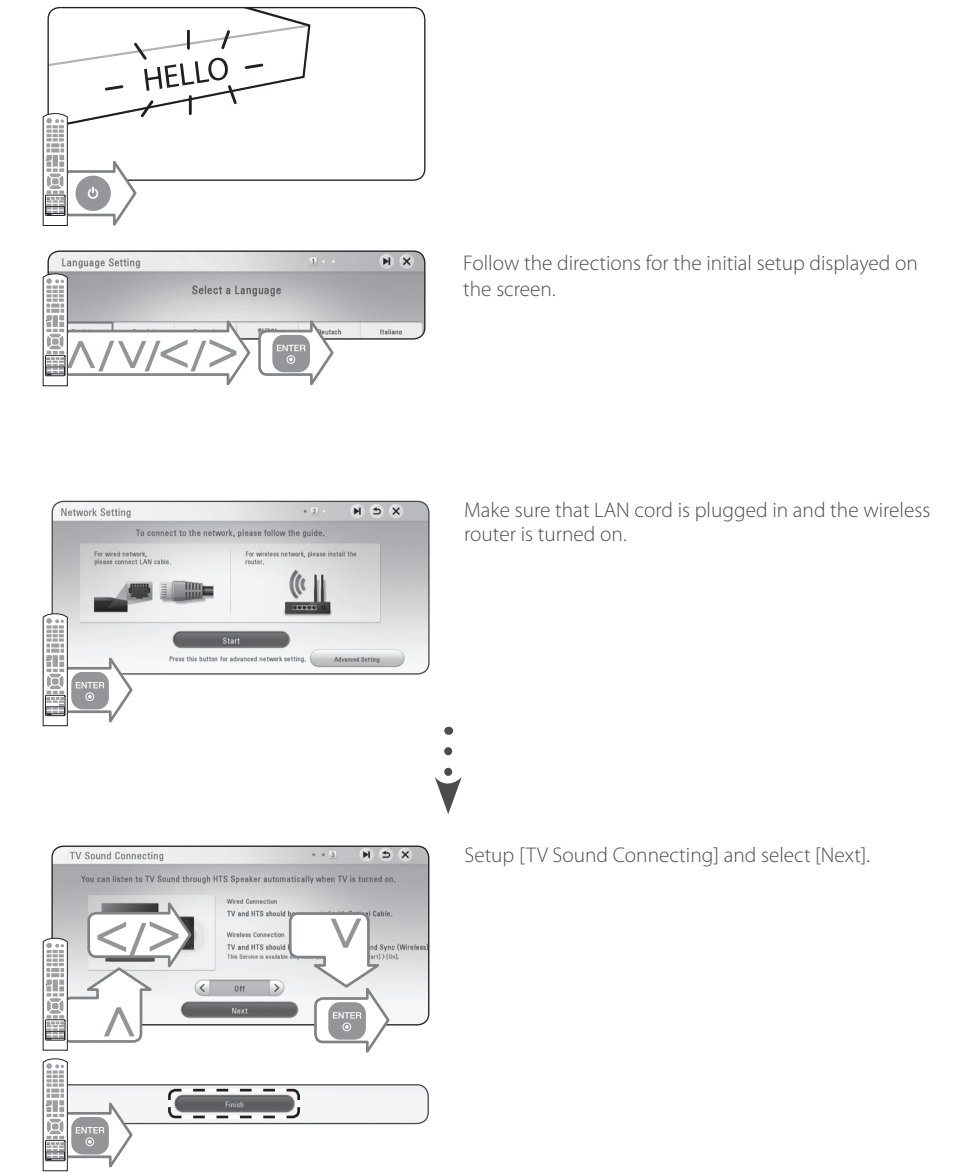


Installation

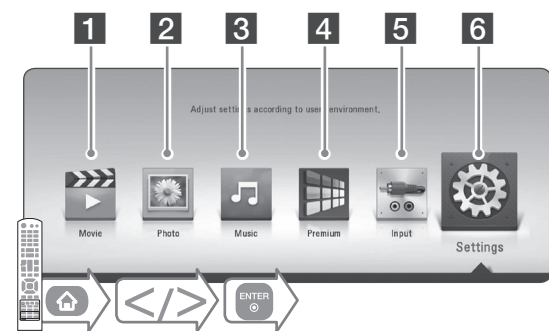
HDMI
HIGH-DEFINITION MULTIMEDIA INTERFACE



Initial Setup



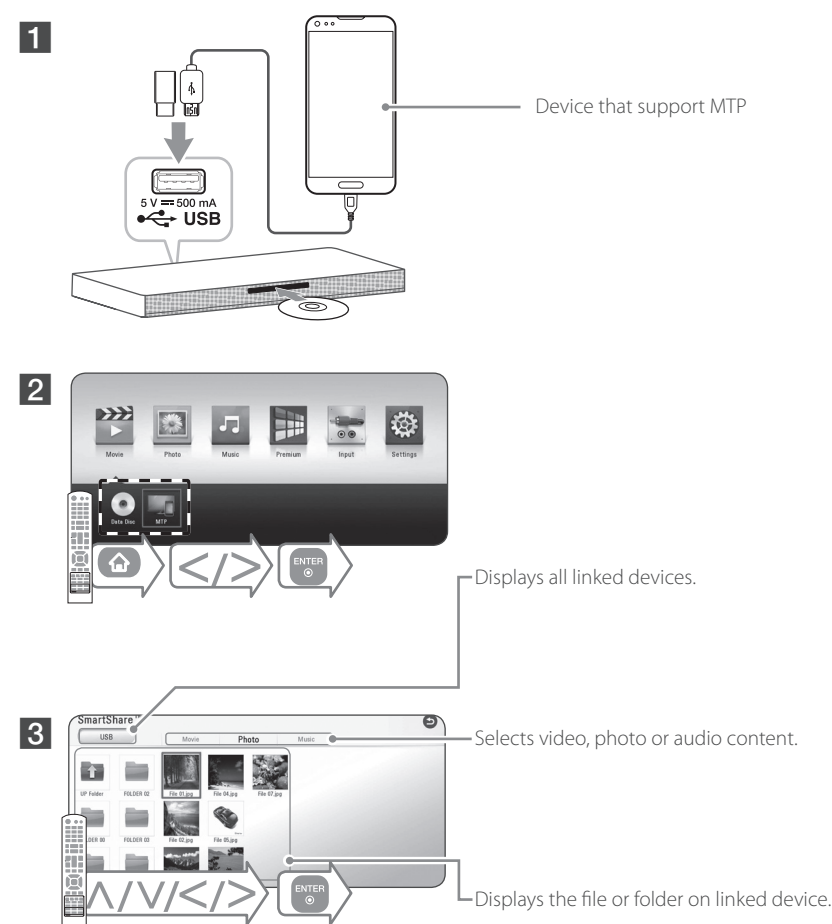
Using HOME menu



- 1** Plays video content.
- 2** Plays photo content.
- 3** Plays audio content.
- 4** Displays the Premium Home screen.
- 5** Changes input mode.
- 6** Adjusts the system settings.

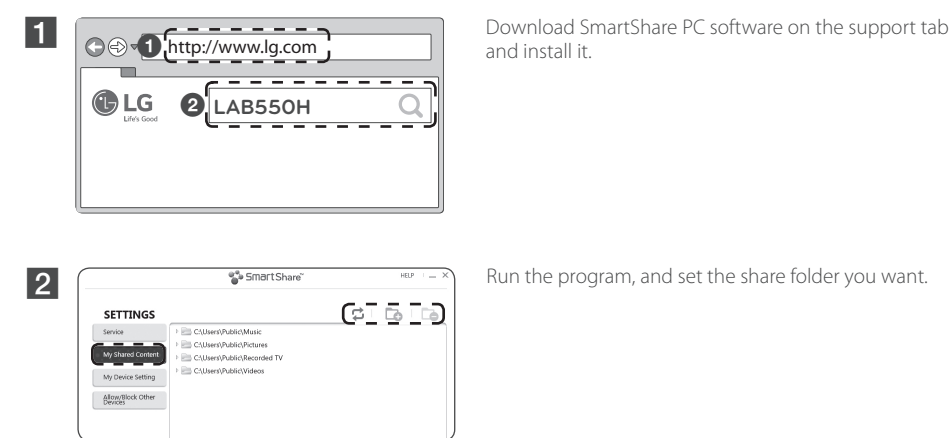


Disc, Data Playback

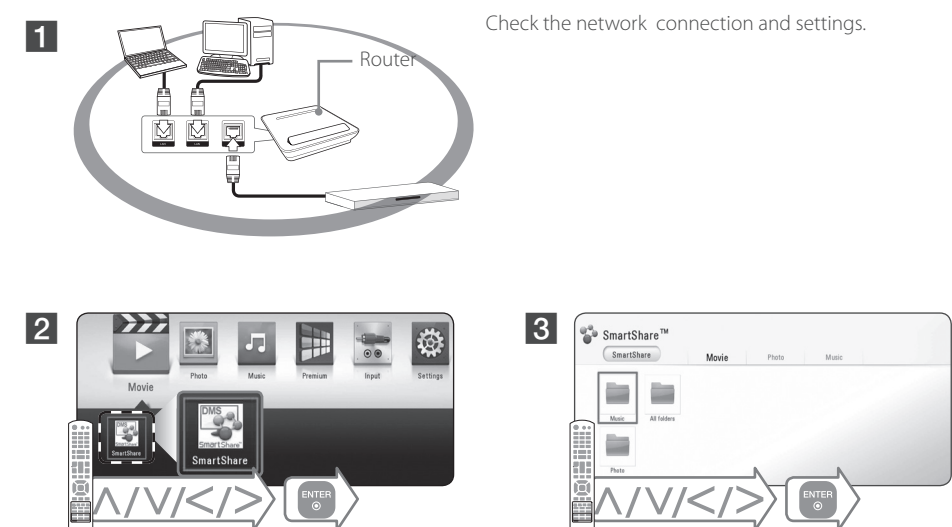


Network Playback

SmartShare PC software Installation

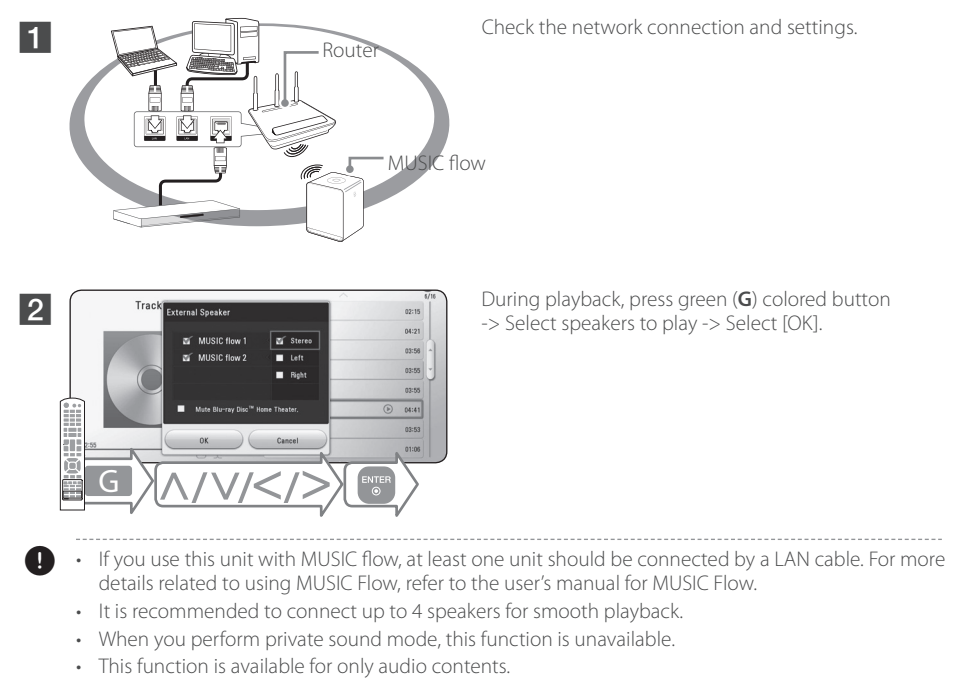


SmartShare Network Playback



Enjoying with LG Multi-room Audio (LG Music Flow)

MUSIC Flow (LG smart Hi-Fi audio system), allows you to enjoy music with the several speakers wirelessly.

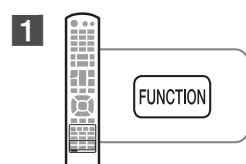




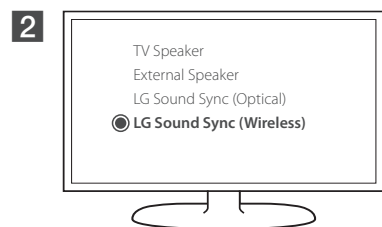
LG Sound Sync



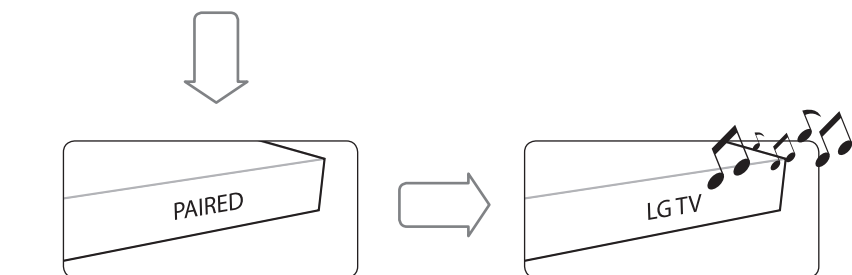
LG Sound Sync enables you to control some functions of this unit by a remote control of your LG TV. Controllable functions are volume up/down and mute. Make sure that your TV has LG Sound Sync logo as shown above.



Select LG TV.



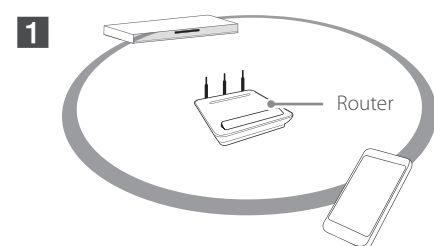
Set up the sound output of your TV : TV setting menu → [Sound] → [TV Sound output] → [LG Sound Sync (Wireless)]



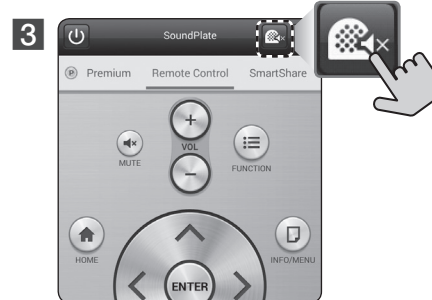
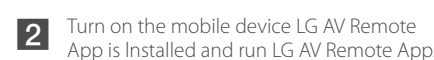
 Details of TV setting menu vary depending on the models of your TV.



Enjoying Private Sound



Make sure that mobile device is connected to the same Wi-Fi network as this player.




- Not all modes support sound privacy and pairing multiple devices is not available.
- When you use the unit with MUSIC flow, private sound mode is unavailable.



Specification

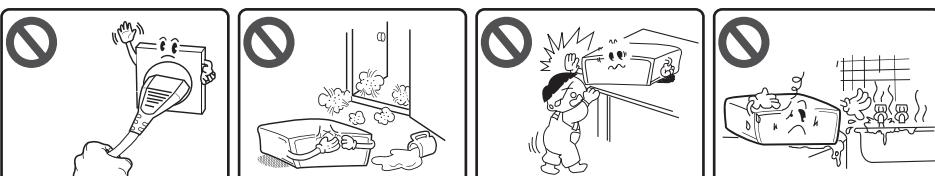
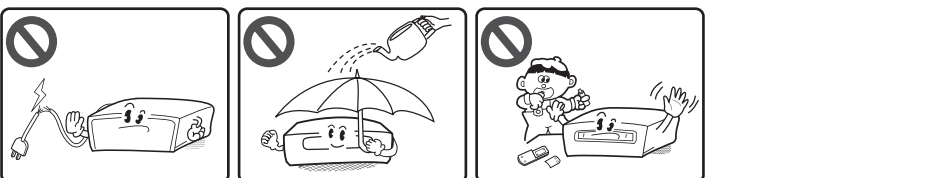
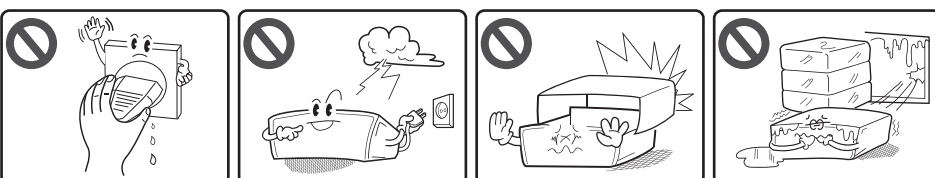
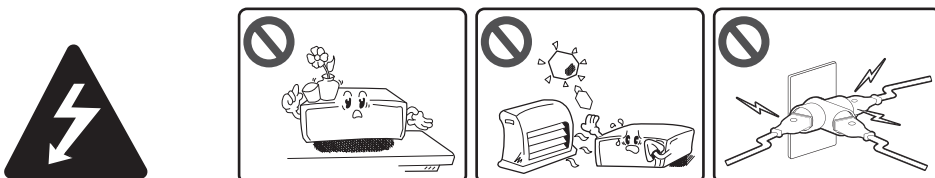
ENGLISH

Power requirements	120 V ~ 60 Hz
Power consumption	33 W
Dimensions (W x H x D)	Approx. (700 x 73 x 350) mm (27.6 x 2.9 x 13.8) inch
Net Weight (Approx.)	7.4 kg (16.3 lb)
Bus Power Supply (USB)	5 V  500 mA

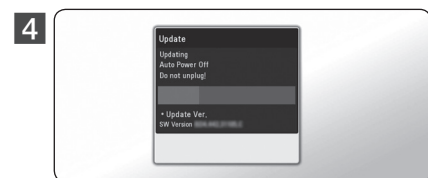
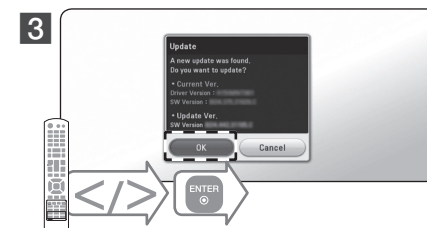
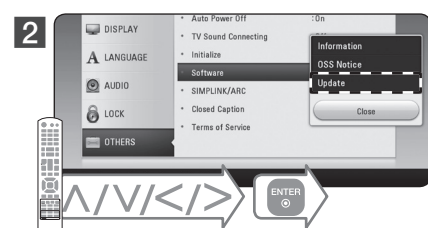
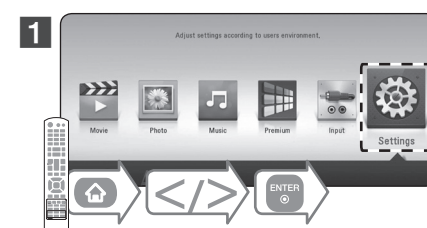
Design and specifications are subject to change without notice.



Safety Information



Software Update



! Before updating software, the unit should be connected to your home network.



Additional Information

Customer Support

You can update the Player using the latest software to enhance the products operation and/or add new features. To obtain the latest software for this player (if updates have been made), proceed the software updates as written or visit <http://www.lg.com> or contact LG Electronics customer care center.

Open source software notice

To obtain the source code under GPL, LGPL, MPL and other open source licenses, that is contained in this product, please visit <http://opensource.lge.com>. In addition to the source code, all referred license terms, warranty disclaimers and copyright notices are available for download. LG Electronics will also provide open source code to you on CD-ROM for a charge covering the cost of performing such distribution (such as the cost of media, shipping and handling) upon email request to opensource@lge.com. This offer is valid for three (3) years from the date on which you purchased the product.



LG Customer Information Center	
1-800-243-0000	USA, Consumer
1-888-865-3026	USA, Commercial
Register your product Online!	
www.lg.com	