

ARC

LUX

ISLAND

Enjoy unobstructed views of your kitchen with the modern, minimalist lines of the Lux. This sleek hood includes a wireless remote control, and it discreetly mounts into the ceiling above your range or cooktop for power and good

looks combined. Your kitchen will stay clean and smoke free with the Lux's Perimeter Aspiration and multiple blower options, and the tri-level LED light strip ensures a good-looking glow. Available in White and Stainless Steel.

**ZEPHYR**

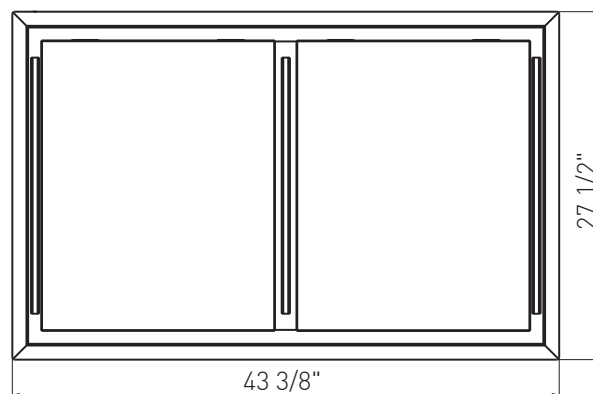
ZEPHYRONLINE.COM



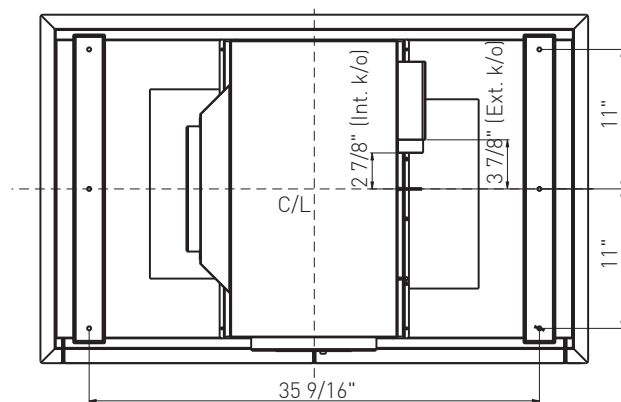
White



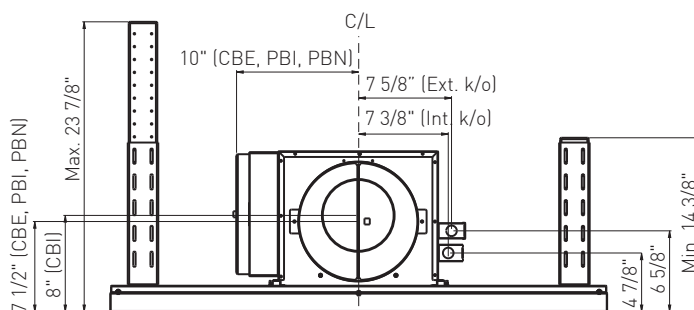
Wireless Remote Control



Front



Top



Side

**MODEL**

|                 |            |
|-----------------|------------|
| Stainless Steel | ALU-E43ASX |
| White           | ALU-E43AWX |
| Size            | 43"        |

**PERFORMANCE**

|                              |                            |
|------------------------------|----------------------------|
| Internal Blower (CBI-290A)*  | 200-290 CFM, 1.4-3 sones   |
| Internal Blower (CBI-600A)*  | 240-600 CFM, 1.8-6 sones   |
| Internal Blower (PBI-1100A)* | 500-1,100 CFM, 3.5-8 sones |
| In-Line Blower (PBN-1000A)*  | 500-1,000 CFM, sones NA    |
| External Blower (CBE-1000)*  | 500-1,000 CFM, sones NA    |

**FEATURES**

|                         |                      |
|-------------------------|----------------------|
| Controls                | Capacitive Touch     |
| Speed Levels            | 3                    |
| Auto Delay-Off          | Yes                  |
| CleanAir Function**     | Yes                  |
| Lighting                | LED Strip x 3 (8.5W) |
| Tri-Level Lighting      | Yes                  |
| Filters                 | Aluminum Mesh x4     |
| Wireless Remote Control | Yes, RF              |
| Recirculating***        | Yes                  |

**DUCT SPECIFICATIONS**

|                                    |                   |
|------------------------------------|-------------------|
| Vertical Blower                    | NA                |
| Horizontal Internal Blower         | 6"(CBI), 10"(PBI) |
| Horizontal In-Line/External Blower | 10"               |

**AC POWER**

|                   |                        |
|-------------------|------------------------|
| Hood w/ CBI-290A  | 120V, 60Hz, Max. 1.05A |
| Hood w/ CBI-600A  | 120V, 60Hz, Max. 3.05A |
| Hood w/ PBI-1100A | 120V, 60Hz, Max. 5.75A |
| Hood w/ PBN-1000A | 120V, 60Hz, Max. 5.75A |
| Hood w/ CBE-1000  | 120V, 60Hz, Max. 6.55A |

**OPTIONAL ACCESSORIES**

|                   |                     |
|-------------------|---------------------|
| Recirculating Kit | ZRC-00LX            |
| Make-Up Air Kit   | MUA006A (600 CFM)   |
|                   | MUA008A (1,000 CFM) |
|                   | MUA010A (1,100 CFM) |

**MOUNTING HEIGHT RANGE†** 48" - 72"

**WARRANTY** 1 year parts, 1 year labor

| CEILING HEIGHT   | 7' | 7.5' | 8'  | 8.5' | 9'  |
|------------------|----|------|-----|------|-----|
| MOUNTING HEIGHT† | 48 | 56"  | 60" | 66"  | 72" |

\*Blower sold separately.

\*\*CleanAir turns your hood on once every four hours for 10 minutes on speed one.

\*\*\*Recirculating kit is only compatible with CBI-290A and CBI-600A blowers.

†Mounting height refers to distance between top of a 36" tall cooking surface and bottom of hood.