

ASSEMBLY INSTRUCTIONS

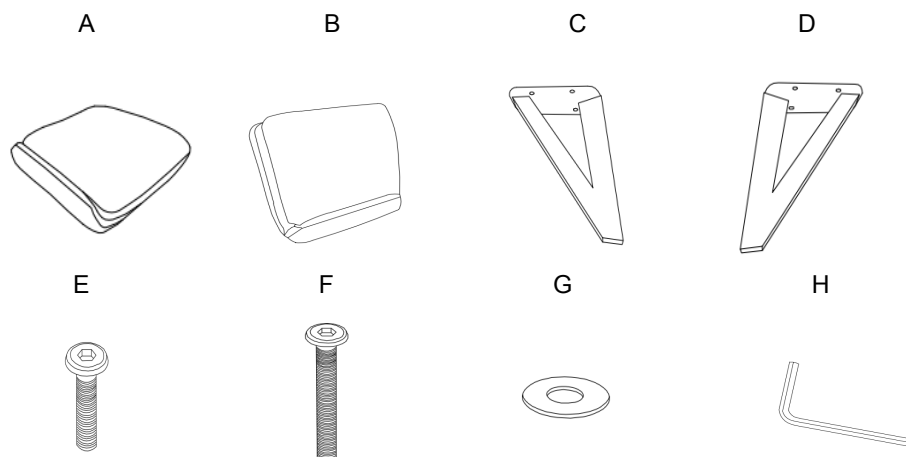
Item#: U3661-05 ARMLESS CHAIR

Thank you for purchasing this quality product. Be sure to check all packing materials carefully for small parts that may have come loose inside the carton during shipment.

Before You Assemble: Please read all instructions carefully before beginning the assembly process. It is recommended that 2 people work together during assembly to prevent personal injury and to ensure that heavy or cumbersome parts are not damaged during the process.

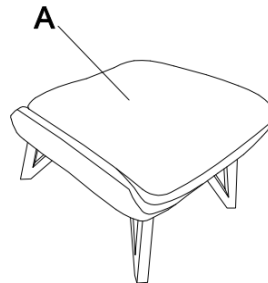
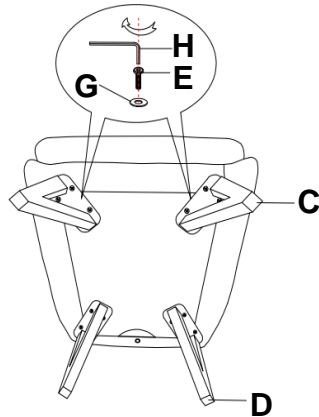
CAUTION: For your safety, this product requires two people to lift.

PARTS LIST

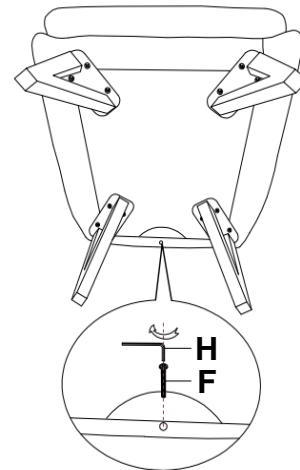
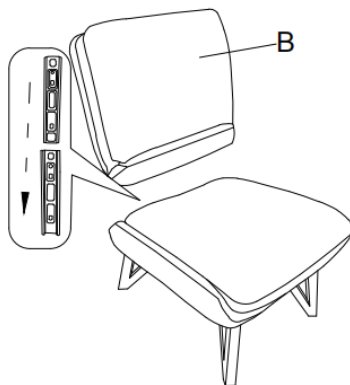


| | | |
|---|----------------------------|-------|
| A | CHAIR BASE W/ SEAT CUSHION | 1PC |
| B | BACK REST | 1PC |
| C | FRONT LEG | 2PCS |
| D | BACK LEG | 2PCS |
| E | SCREW | 16PCS |
| F | SCREW | 1PC |
| G | WASHER | 16PCS |
| H | ALLEN WRENCH | 1PC |

STEP 1 Align the front legs and back legs with installation holes. Put a washer(G) on each screw(E) and using WRENCH(H) provided, tighten all screws until fully secure.



STEP 2 Carefully align each end of BACK REST(B) to corresponding KD clips on chair base, slide each end downward, ensuring an even secure connection. Carefully insert the SCREW (F) straight into the center back hole and using WRENCH(H) provided, tighten screw until fully secure.



STEP 3 Assembly completed!

