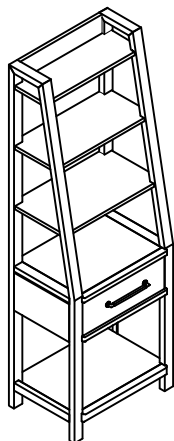




ITEM# : **406-HO201**

Thank you for purchasing this quality product. Be sure to check all packing material carefully for small parts which may have come loose inside the carton during shipment. Identify and count all parts and compare with the parts List Below:



HOW TO REMOVE DRAWER

To remove drawer, simultaneously pull tab up on one side and push down on the other and remove drawer.

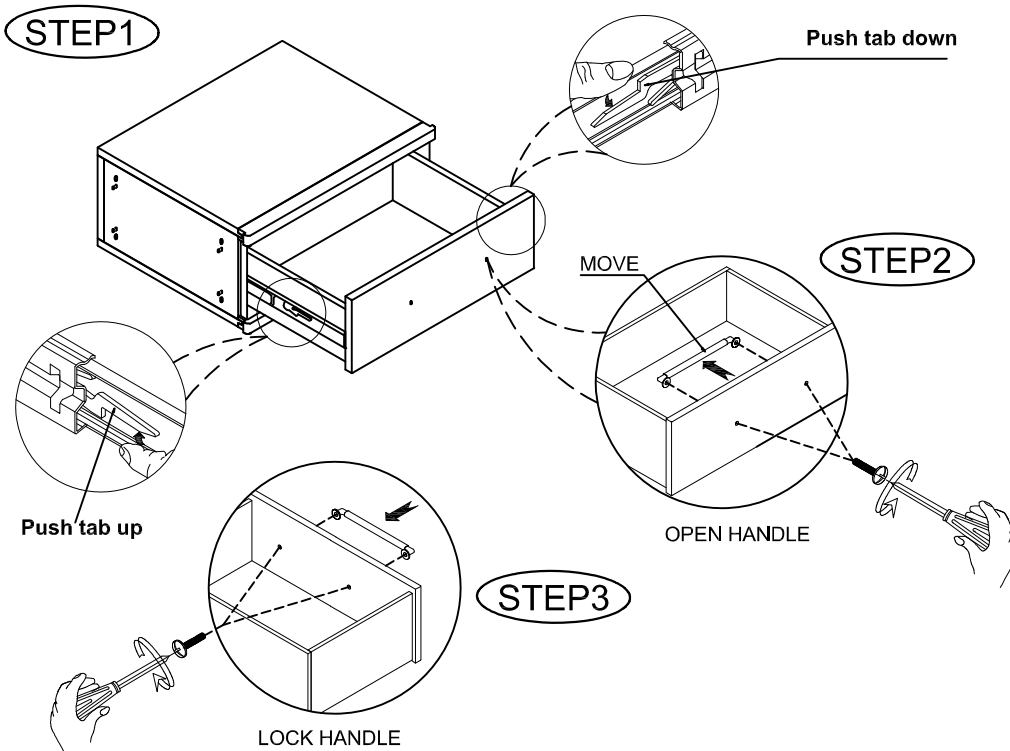
⑧			
HARDWARE LIST			
NO.	Drawing	Description	
A		Bolt (Ø5/16"x1-3/4")	12pcs
B		Spring washer (Ø5/16")	12pcs
C		Flat washer (Ø5/16"x19mm)	12pcs
D		Ø5/16" Wrench(12mm)	1pc
E		Metal L Bracket(19*13*18*2mm, 100°)	6pcs
F		Wood screw(Ø8*1/2")	12pcs
G		Wood screw(Ø8*1-1/4")	4pcs
H		Wood screw(Ø8*3/4")	4pcs
⑨			
HARDWARE LIST			
NO.	Drawing	Description	Q'ty
A		Furniture Tipping Restraint	1 Set

NOTE:

Remove the hardware screws and re-attach on the front of the drawer as shown.

HUTCH PART LIST:

①		RIGHT SIDE FRAME: 1PC
②		LEFT SIDE FRAME: 1PC
③		SHELF TOP: 1PC
④		SHELF MID SMALL: 1PC
⑤		SHELF MID BIG: 1PC
⑥		STORAGE: 1PC
⑦		SHELF BOTTOM: 1PC



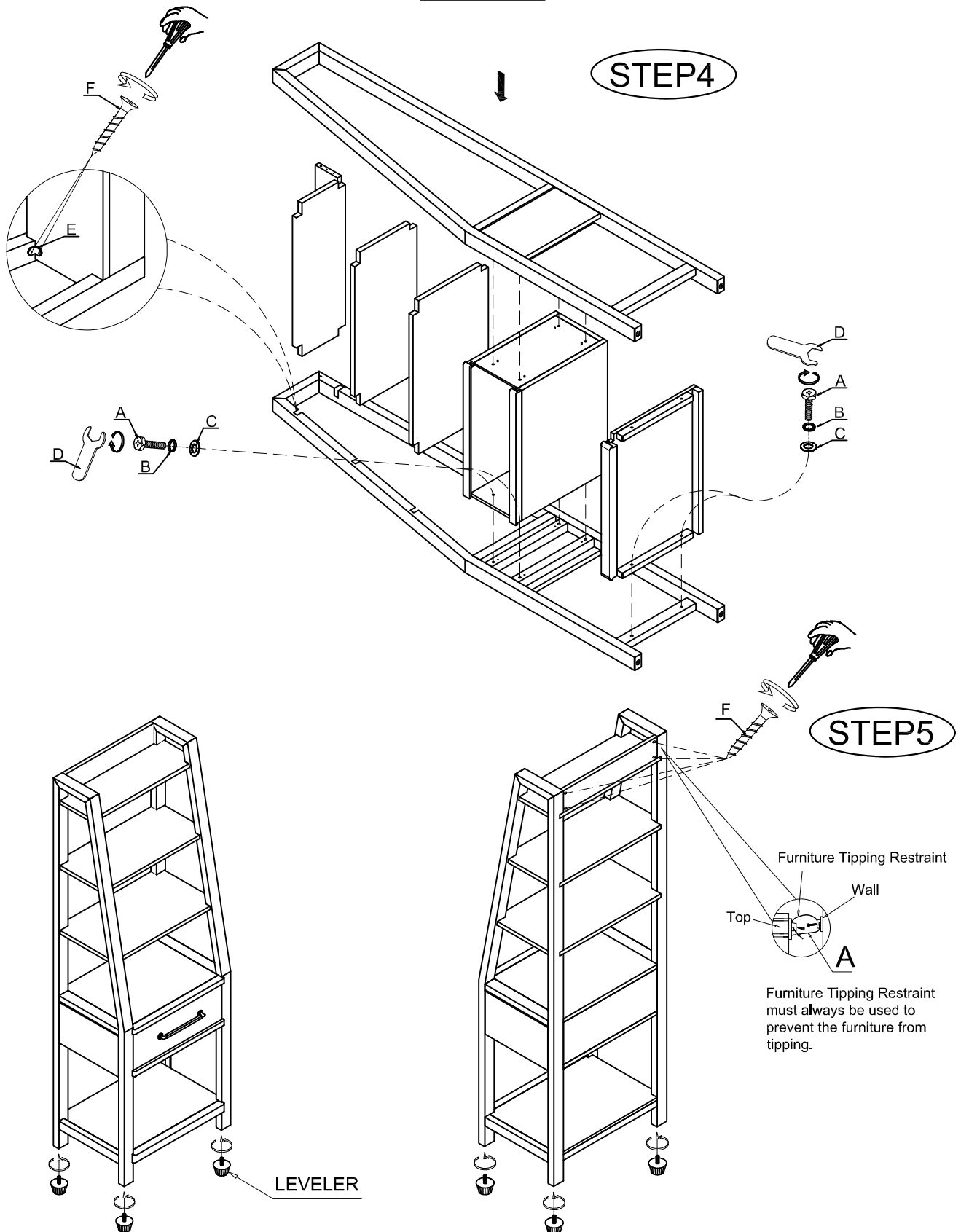
CLEANING INSTRUCTION

Clean the Leaning Bookcase surface with a furniture polish and a soft cloth.

ASSEMBLY INSTRUCTION

DESCRIPTION: LEANING BOOKCASE

ITEM# : 406-HO201



CLEANING INSTRUCTION

Clean the Leaning Bookcase surface with a furniture polish and a soft cloth.

Made in Viet Nam