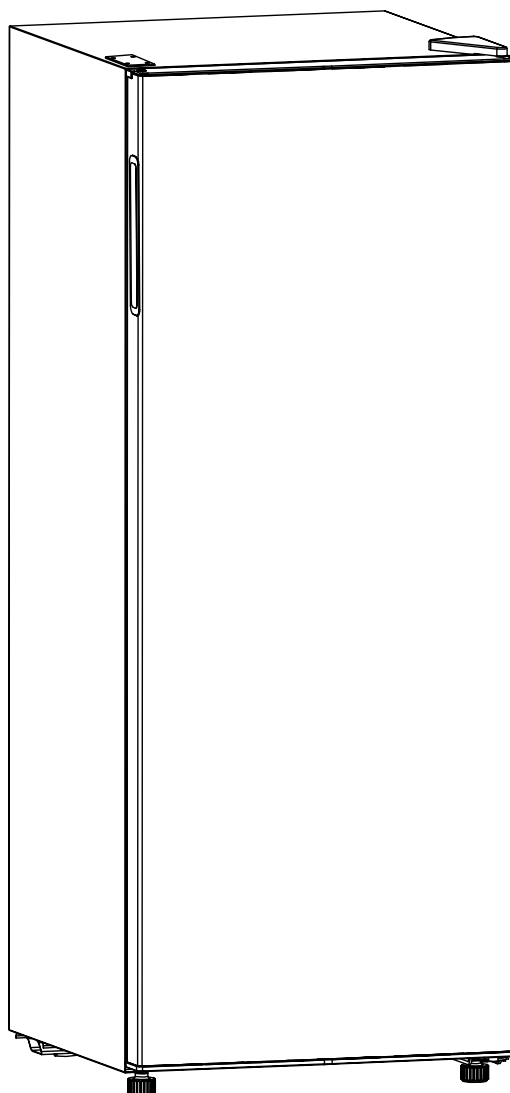


VITARA

Models / Modelos	VLUF0700EW
REFRIGERATOR / FREEZER REFRIGERADOR / CONGELADOR	INSTRUCTION MANUAL MANUAL DE INSTRUCCIONES



BEFORE USE, PLEASE READ AND FOLLOW ALL SAFETY RULES AND OPERATING INSTRUCTIONS.



Important Safety Information

READ AND FOLLOW ALL SAFETY INSTRUCTIONS

SAFETY REQUIREMENTS

DANGER: Risk of fire or explosion. Flammable refrigerant used. Do not puncture refrigerant tubing.

- Ensure that servicing is done by factory authorized service personnel, to minimize product damage or safety issues.
- Consult repair manual or owner's guide before attempting to service this product. All safety precautions must be followed.
- Dispose of properly in accordance with federal or local regulations.
- Follow handling instructions carefully.
- Do not store explosive substances such as aerosol cans with a flammable propellant in this appliance.

WARNING:

- Keep ventilation openings, in the appliance enclosure or in the built-in structure, clear of obstruction.
- Do not use mechanical devices or other means to accelerate the defrosting process, other than those recommended by the manufacturer.
- Do not damage the refrigerant circuit.
- Do not use electrical appliances inside the food storage compartments of the appliance, unless they are of the type recommended by the manufacturer.

CAUTION: Children should be supervised to ensure that they do not play with the appliance.

DANGER: Risk of child entrapment. Before throwing away an old appliance:

- Remove the door or lid.
- Leave shelves in place so that children may not easily climb inside.

This appliance is not intended for use by persons (including children) whose physical, sensory or mental capabilities may be different or reduced, or who lack experience or knowledge, unless such persons receive supervision or training to operate the appliance by a person responsible for their safety.

This appliance is intended to be used in household and similar applications such as:

- Staff kitchen areas in shops, offices and other working environments;
- Farm houses and by clients in hotels, motels and other residential type environments;
- Bed and breakfast type environments;
- Catering and similar non-retail applications.

GROUNDING INSTRUCTIONS

This appliance must be grounded. Grounding reduces the risk of electrical shock by providing an escape wire for the electrical current.

This appliance has a cord that has a grounding wire with a 3-prong plug. The power cord must be plugged into an outlet that is properly grounded. If the outlet is a 2-prong wall outlet, it must be replaced with a properly grounded 3-prong wall outlet. The serial rating plate indicates the voltage and frequency the appliance is designed for.

WARNING - Improper use of the grounding plug can result in a risk of electric shock. Consult a qualified electrician or service agent if the grounding instructions are not completely understood, or if doubt exists as to whether the appliance is properly grounded.

Do not connect your appliance to extension cords or together with another appliance in the same wall outlet. Do not splice the power cord. Do not under any circumstances cut or remove the third ground prong from the power cord. Do not use extension cords or ungrounded (two prongs) adapters.

If the power supply cord is damaged, it must be replaced by the manufacturer, its service agent or similar qualified person in order to avoid hazard.

SAVE THESE INSTRUCTIONS!

INSTALLATION INSTRUCTIONS

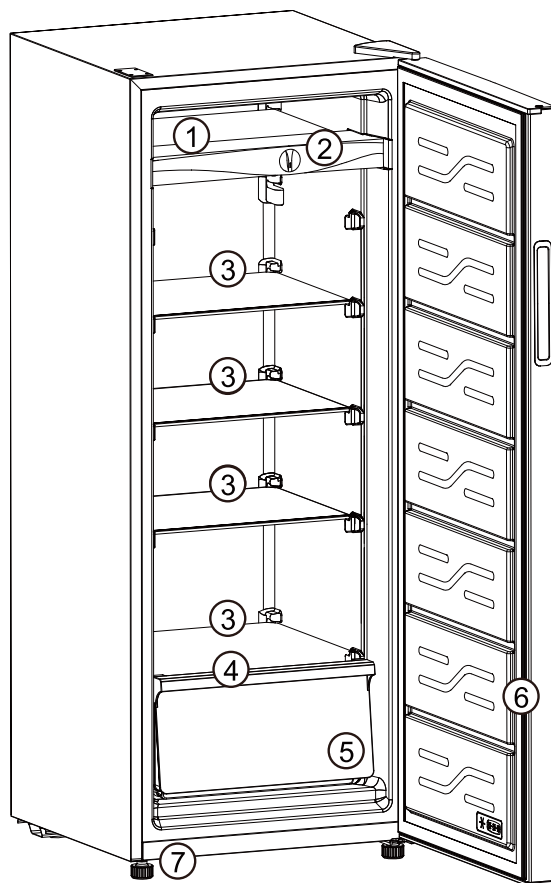
LOCATION

- Two people should be used when moving the appliance. Place the appliance on a floor that is strong enough to support it when it is fully loaded.
- Remove interior and exterior packaging prior to installation. Wipe the outside of the appliance with a soft, dry cloth and the inside with a lukewarm wet cloth.
- Do not place the appliance in direct sunlight or near sources of heat, such as a stove or heater, as this can increase electrical consumption. Extreme cold ambient temperatures may also cause the appliance to perform improperly.
- Do not use the appliance near water, for example, in a wet basement or near a sink.
- This appliance is intended for indoor household and garage use only. Freezers are tested to perform in temperatures ranging from 0°F to 110°F (-17°C to 43°C). It is not designed for outside installation, including anywhere that is not temperature controlled such as porches, vehicles, etc.
- Before connecting the appliance to a power source, let it stand upright for approximately 6 hours. This will reduce the possibility of a malfunction in the cooling system from handling during transportation.
- This appliance is 54.6 cm (21.5 inches) wide by 143 cm (56.3 inches) high by 56.6 cm (22.3 inches) deep.
- Allow 12.7 cm (5 inches) of space between the back, sides and top of the appliance and all adjacent walls.
- This appliance is intended for free-standing installation only and is not intended to be built into a cabinet or counter. Building in this appliance can cause it to malfunction.

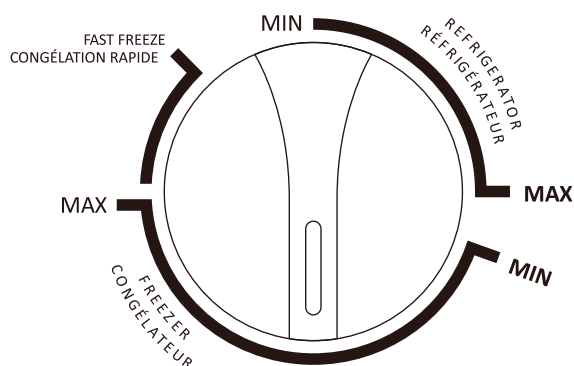
OPERATING INSTRUCTIONS

FEATURES

1. Glass shelf (not adjustable)
2. Thermostat dial
3. Adjustable glass shelf
4. Half sized adjustable glass shelf
5. Plastic bin
6. Magnetic gasket
7. Adjustable feet
8. Defrost water outlet (not pictured; located on the interior of the cabinet)



THERMOSTAT DIAL



OPERATING INSTRUCTIONS

TEMPERATURE SETTING

This appliance can be used as a refrigerator or a freezer. The temperature can be controlled by setting the thermostat dial inside the cabinet.

Refrigerator Use

To use the appliance as a refrigerator, set the thermostat dial in the "REFRIGERATOR" range. Using this setting allows the appliance to store fresh food and beverages. The internal temperature will be between 0 - 10°C (32 - 50°F).

There are refrigerant lines in the cabinet walls that will get very cold. When using the appliance as a refrigerator, keep food items away from the cabinet walls to avoid freezing food.

Freezer Use

To use the appliance as a freezer, set the thermostat dial in the "FREEZER" range. Using this setting allows the appliance to store frozen foods and ice. The internal temperature will be between -12 - -24°C (10.4 - -11.2°F).

Do not place liquid items in sealed bottles or containers into the appliance when it is being used as a freezer to avoid damage caused by expansion and cracking of the container.

Fast Freeze

Setting the thermostat dial to "FAST FREEZE" will cause the compressor to run continuously. The internal temperature will be roughly -28°C (-18.4°F). "FAST FREEZE" can be used to quickly lower the temperature inside the freezer so contents will freeze faster. Do not run "FAST FREEZE" for more than 24 hours.

IMPORTANT

This appliance is considered "Garage Ready" if it is being used as a freezer. If the thermostat dial is set in the "REFRIGERATOR" range, the appliance should only be used in climate controlled spaces.

Conversion Notes

When using the appliance as a refrigerator, condensation may form on the walls and shelves. This is normal and does not impact the operation of the appliance. This condensed water can be wiped with a dry cloth to remove it. Adjusting the levelling legs to a taller position can help to angle the cabinet backwards and cause condensed water to flow out the defrost drain on the interior of the cabinet.

If the appliance has been used as a freezer and will be converted to use as a refrigerator, a large amount of condensation may form on the cabinet walls. Please check that all food items have been removed to avoid unwanted food defrosting. Defrost and clean the appliance before resuming use to avoid water accumulation inside the cabinet.

Other Important Notes

- MIN indicates the warmest setting.
- MAX indicates the coldest setting.
- Setting the thermostat dial in the middle of the MIN-MAX range should be sufficient for regular home use.
- Setting the thermostat to "FAST FREEZE" or MAX in the "FREEZER" range will cause the compressor to run continuously and will make the interior very cold. It is not recommended to run the appliance at this setting for long periods of time.
- The temperature inside the appliance can vary based on ambient room temperature, the frequency that the door is opened and the amount of fresh food that has recently been added.
- Do not overload the appliance as this can affect performance. Do not freeze large quantities of fresh food at the same time.
- The door may be difficult to open immediately after closing it. This is normal and is due to the pressure difference between the cold interior of the appliance and the warm air that has just entered the appliance when the door was opened. The pressure will equalize within a few minutes. If the door is especially difficult to open, wait 5 minutes to allow the pressure to equalize and then try again.

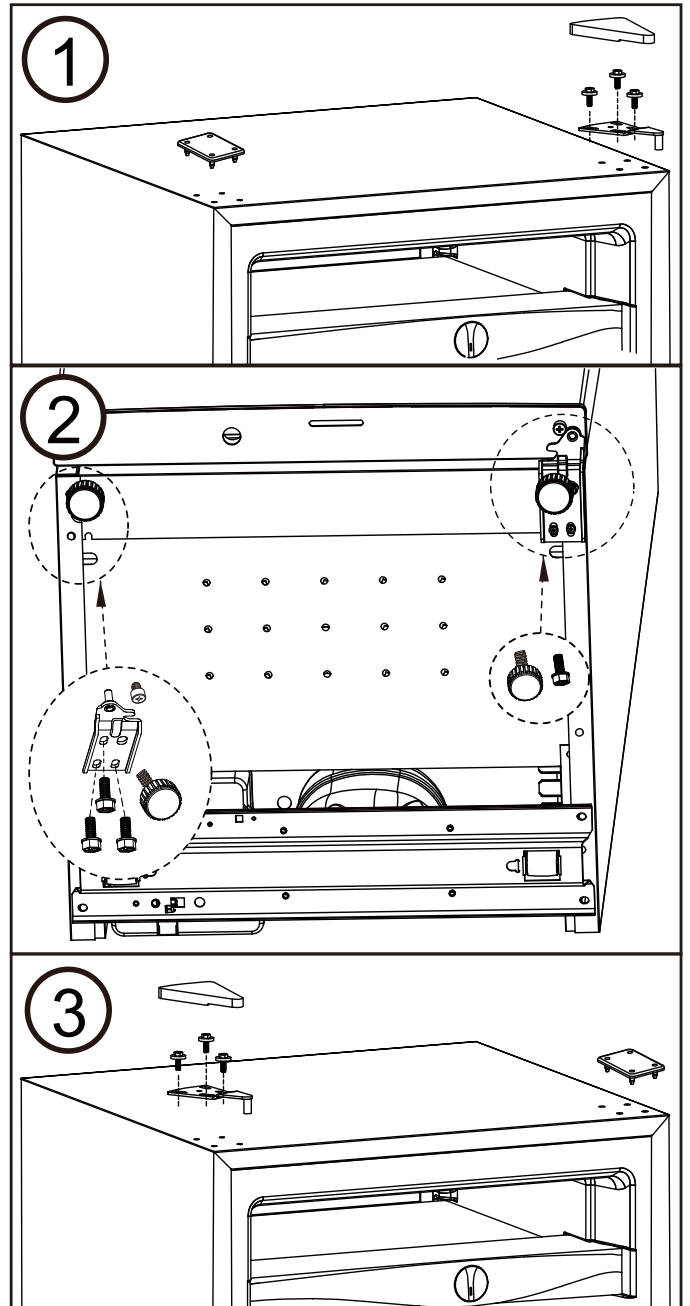
OPERATING INSTRUCTIONS

DOOR REVERSAL INSTRUCTIONS

Ensure the appliance is unplugged before changing the door swing. If laying the appliance down, place it on a blanket or similar item to protect flooring and the finish of the appliance.

If the appliance is placed on its back or side for any length of time during this process, it must be allowed to remain upright for 6 hours before plugging it in to avoid damage to the internal components.

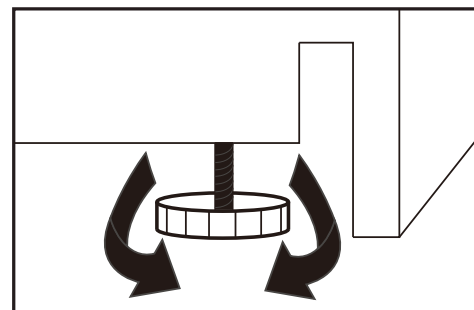
1. Remove the hinge cover and upper hinge from the top right side of the cabinet. Remove the screw hole covers from the top left side of the cabinet. Remove the door from the cabinet.
2. Remove the adjustable foot and screw from the bottom left side of the cabinet. Remove the adjustable foot, lower right hinge and door stopper from the bottom right side of the cabinet. The lower left hinge can be found in the accessory bag. Install the lower left hinge, the door stopper and the adjustable foot on the bottom left side of the cabinet. Install the adjustable foot and screw on the bottom right side of the cabinet. Save the lower right hinge for future use.
3. Install the door on the cabinet. Install the upper hinge on the top left side of the cabinet. Install the screw hole covers on the top right side of the cabinet. Ensure the rubber gasket is making a good seal with the cabinet all the way around the door before tightening the screws on the upper hinge.



LEVELING INSTRUCTIONS

There are two adjustable legs on the bottom of the appliance that can be turned up or down to ensure that the appliance is level. It is important that the appliance is level to minimize noise and vibration.

Move the appliance to its final location. Turn the leveling leg counter-clockwise as far as it will go, until the top of the foot is touching the bottom of the cabinet. Slowly turn the leveling leg clockwise until the appliance is level.



CARE & MAINTENANCE

CLEANING

- Ensure the appliance is unplugged before cleaning.
- Clean the inside and outside of the appliance with a soft, damp cloth and some mild detergent.
- It is important to keep the area where the door seals against the cabinet clean to ensure a tight seal. Clean this area with a soapy cloth. Rinse with a damp cloth and dry.
- Do not use cleaners containing ammonia or alcohol as these can damage the appearance of the appliance. Never use any commercial or abrasive cleaners or sharp objects on any part of the appliance.
- Allow the interior of the appliance to completely dry before plugging it back in and returning food items.

DEFROST

This appliance should be manually defrosted approximately every 6 months or whenever the layer of frost reaches 6 mm (1/4") thick.

Protect flooring by putting towels or a pan under the appliance in case of leaking. Check the appliance frequently during defrosting. Remove all food, unplug the appliance and leave the door open. Allow the frost to melt and leave the appliance unplugged with the door open until the interior is dry.

POWER FAILURE

Most power failures are corrected within a few hours and should not affect the temperature of your appliance if you minimize the number of times the lid is opened. If the power is going to be off for a longer period of time, take the proper steps to protect your contents. Wait 3 to 5 minutes before attempting to restart the refrigerator if operation has been interrupted.

VACATION

You may leave the appliance operating during vacations of less than three weeks. If the appliance will not be used for several months, remove all items and unplug the appliance. Defrost, clean and dry the interior thoroughly. To prevent odor and mold growth, leave the door open slightly, blocking it open if necessary.

ENERGY SAVING TIP

The appliance should be located in the coolest area of the room, away from heat producing appliances, and out of direct sunlight. Do not overload the unit or block any ventilation openings.

MOVING

- Remove all items and ensure the interior of the appliance is clean and dry.
- Tape the lid shut.
- Be sure the appliance stays secure in the upright position during transportation.
- Protect the outside of the appliance with a blanket or similar item.
- If the appliance is placed on its back or side during transportation, upon reaching the destination, allow it to remain in its operating position for 6 hours to reduce the possibility of a malfunction in the cooling system.

DISPOSAL

This appliance may not be treated as regular household waste, it should be taken to the appropriate waste collection point for recycling of electrical components. For information on local waste collection points, contact your local waste removal agency or government office. Disposal of this appliance should be in accordance with federal and local regulations.

TROUBLESHOOTING AND FREQUENTLY ASKED QUESTIONS

PROBLEM OR QUESTION	POSSIBLE CAUSE AND SOLUTIONS
No power	<ul style="list-style-type: none"> A fuse may be blown or the circuit breaker tripped; check the fuse box or circuit breaker Plug not fully inserted into the wall outlet; make sure the power cord is plugged in
Internal temperature not cold enough	<ul style="list-style-type: none"> Temperature setting is too warm; turn the temperature setting down The lid is not shut properly or opened excessively; make sure the lid is completely closed Recently added a large quantity of warm food to the cabinet; remove some of the new items until the freezer cools down Close proximity to heat source or direct sunlight; move the freezer to another area Ambient temperature or humidity is very high; move the freezer to another area
Appliance runs continuously	<ul style="list-style-type: none"> Temperature setting is too cold: turn the temperature setting up The lid not shut properly or opened excessively: make sure the lid is completely closed Recently added a large quantity of warm food to the cabinet: remove some of the new items until the freezer cools down Close proximity to heat source or direct sunlight; move the freezer to another area Ambient temperature or humidity is very high; move the freezer to another area
Why is frost and ice building up on the cabinet walls?	The refrigerant lines run through the cabinet walls and will get very cold; this can cause frosting on the cabinet walls. The amount of frost is affected by ambient humidity, the frequency that the door is opened and warm food being added to the cabinet. If the frost becomes more than 6 mm (1/4") thick, please see the defrosting instructions to remove it.
The appliance is making a gurgling noise; why?	This noise is completely normal. The refrigerant inside the appliance will make a gurgling noise as it changes from a liquid to a gas and back again.
What is the electrical rating?	This information can be found on the rating place located on the back or side of the cabinet.
How much does it cost to run the appliance per year?	Please refer to the energy guide found at www.vitaraamerica.com
Can I use an extension cord?	No, an extension cord may not be used
Can I use this appliance in a garage?	Yes, this appliance is considered "Garage Ready" when it is being used as a freezer. If the appliance is being used as a refrigerator, it should only be used in climate controlled spaces.
I am having trouble opening the lid; why?	The appliance door may be difficult to open immediately after closing it. This is normal and is due to the pressure difference between the cold interior of the appliance and the warm air that has just entered the appliance when it was opened. The pressure will equalize within a few minutes.