

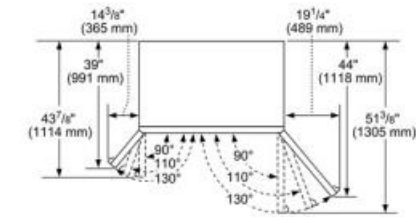
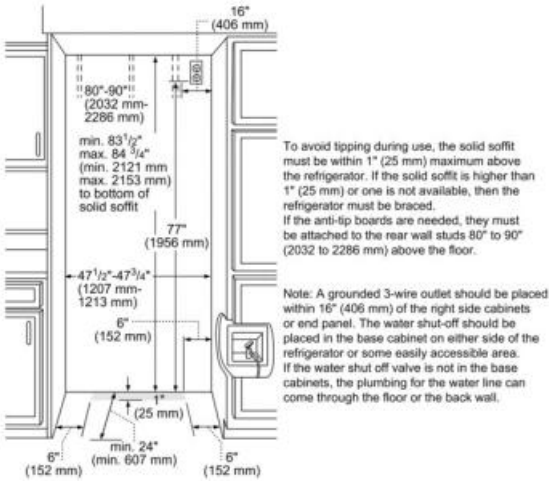


Design

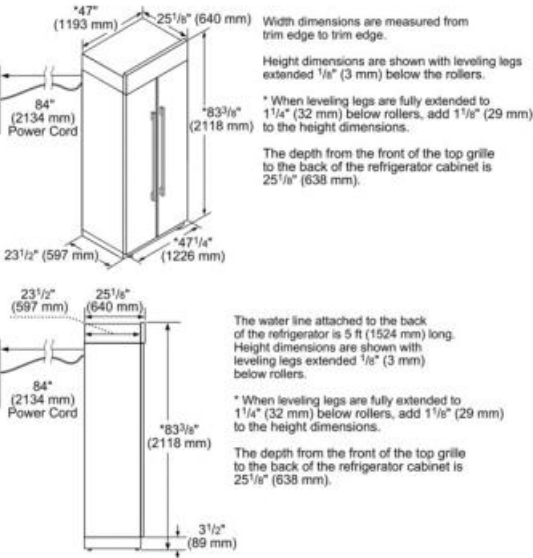
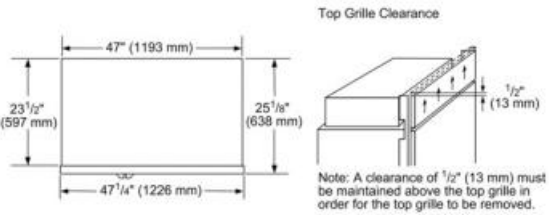
- Timeless built-in stainless steel refrigerator
- Professional Handle Design

Performance

- Electronic controls for precise temperature management
- FlexTemp® Drawer optimized for fish, meat and produce
- Crisper Drawers
- Gallon door bins
- Frameless glass shelves
- Height adjustable glass shelves
- All metal freezer baskets
- Filtered ice-maker
- SuperCool - Chills food quickly
- Sabbath mode
- Door open alarm
- NO_FEATURE Cu. Ft.



The location must permit both doors to open to a minimum of 90°. Allow 4 1/2" (114 mm) minimum space between the side of the refrigerator and a corner wall.



| | |
|--------------------------------------|---------|
| Frequency (Hz) | 60 |
| Approval certificates | CSA, UL |
| Energy consumption (kWh/yr) | 657.0 |
| Net weight (lbs) | 575 |
| Gross weight (lbs) | 637 |
| Refrigerator gross capacity (cu.ft.) | 19 |
| Freezer gross capacity (cu.ft.) | 11 |
| Number of door bins - freezer | 6 |
| Number of shelves - freezer | 3 |
| Water filter replacement indicator | Yes |
| Reversible door hinge | No |