



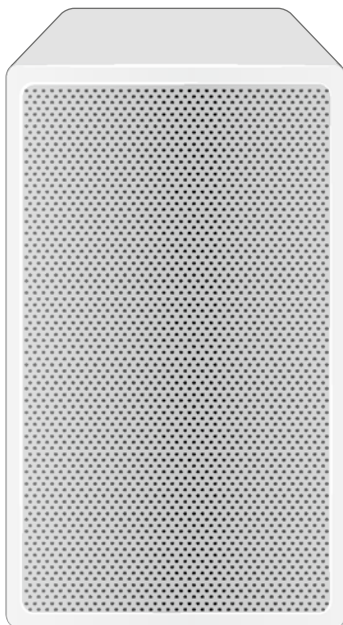
SL Loudspeaker 52 A

Conference Loudspeaker

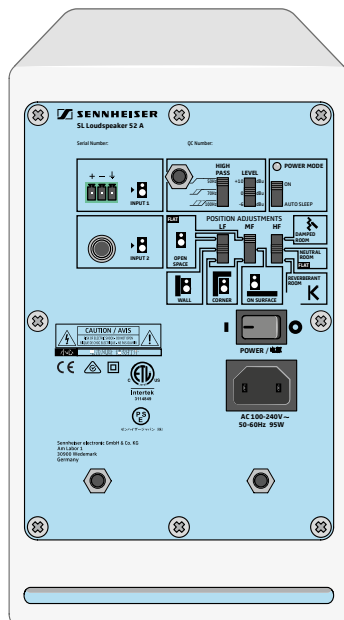
FEATURES

- Active loudspeaker with inbuilt power supply
- Optimized for speech intelligibility
- Integrated DSP with frequency adjustments and high pass filter
- Auto sleep mode
- Flexible wallmount included in delivery

The SL Loudspeaker 52 A W has been optimized for speech intelligibility. The active loudspeaker transmits the spoken words of all participants in the web and telephone conference as naturally as possible. Its unobtrusive design underlines the high quality approach.



Front



Back

ARCHITECT'S SPECIFICATION

The loudspeaker shall be optimized for speech intelligibility and shall be suitable for meeting rooms with up to 16 participants on site.

The loudspeaker shall feature two input sockets for connecting audio signals: one balanced input terminal (e.g. Phoenix Contact MC 1.5/3-ST-3.5 or similar) and one unbalanced RCA input.

The loudspeaker shall feature three 3-position adjustment switches for adjusting its high, medium and low frequency levels for optimum sound quality depending on the mounting position and the room characteristics. The loudspeaker's high pass filter shall be adjustable to 50 Hz, 70 Hz or 100 Hz. The input sensitivity shall be selectable between -6 dBu, 0 dBu or +10 dBu. The input impedance (balanced and unbalanced) shall be > 10 kΩ. The loudspeaker shall have a frequency response (± 3 dB) of 53 – 30,000 Hz.

Maximum sound pressure level at 1 m (150 to 5,000 Hz) shall be 97 dB SPL. THD at 90 dB SPL at 1 m > 200 Hz shall be < 1 %. Nominal output power of the woofer and the tweeter (RMS at 1 % THD and with deactivated limiter) shall be 40 W, respectively. THD plus noise vs. v frequency at 1 W output power shall be 0.16 %. Signal-to-noise ratio at 1 kHz shall be 95 dB. Common mode rejection ratio shall be 71 dB. The loudspeaker shall operate on 100 - 240 V AC, 50 – 60 Hz. The loudspeaker shall have an ON/OFF power switch and shall feature a second switch for activating/deactivating the auto standby mode. If enabled, the auto standby mode shall become active after 20 minutes without audio signal.

The loudspeaker shall have a housing with pre-drilled mounting points and shall be supplied complete with a wall mounting kit (consisting of a wall bracket, a loudspeaker bracket, 2 spacers, a safety wire, screws and anchors). The loudspeaker's dimensions shall be approximately 240 x 140 x 161 mm (9.45" x 5.51" x 6.34"); its weight shall be approximately 3.1 kg.

The loudspeaker shall be the Sennheiser SL Loudspeaker 52 A W.



SL Loudspeaker 52 A

Conference Loudspeaker

SPECIFICATIONS

Acoustics			
Frequency response	53 - 30,000 Hz	LF	flat f = 800 Hz, Gain -2.0 dB, 6 dB Lowshelf f = 800 Hz, Gain - 4.0 dB, 6 dB Lowshelf
±3 dB			
Max. SPL at 1 m (150 - 5,000) Hz	97 dB SPL	Input sensitivity at 97 dB SPL	Switch positions - 6 dBu 0 dBu 10 dBu
THD at 90 dB SPL at 1 m > 200 Hz	< 1 %	Switch-on level switch-on automatics	1.4 mVRMS
Electronics		Auto standby	20 min
Nominal output power woofer RMS at 1 % THD (with deactivated limiter)	40 W	Input impedance:	balanced > 10 kΩ unbalanced > 10 kΩ
Nominal output power tweeter RMS at 1 % THD (with deactivated limiter)	40 W	Product properties	
THD + N vs. frequency at 1 W output	0.16 %	Power consumption (standby)	230 V AC; 0.47 W / 110 V AC; 0.34 W
SNR at 1 kHz	95 dB	Power consumption (idle)	230 V AC; 4.75 W / 110 V AC; 4.53 W
CMRR	71 dB	Power consumption (max)	230 V AC; 95 W / 110 V AC; 91 W
Crossover frequency	4.5 kHz	Dimensions (H x W x D)	240 x 140 x 161 mm
Slope low pass woofer	12 dB/oct. (2nd order)	Weight	3.1 kg
Slope high pass tweeter	24 dB/oct. (4th order)	Mounting points	2 x M6 on rear panel with depth 10 mm
Resonance frequency high pass woofer	55 Hz; 75 Hz; 100 Hz		
Slope high pass woofer	24 dB/oct. (4th order)		
HF	f = 2,800 Hz, Gain +1.4 dB flat f = 2,800 Hz, Gain -1.5 dB		
MF	flat f = 100 Hz, Gain -2.7 dB f = 230 Hz, Gain -3.7 dB		

DELIVERY INCLUDES

- SL Loudspeaker 52 A W
- SL SpeakerMount 100:
 - 1 wall bracket
 - 1 loudspeaker bracket
 - 2 spacers
 - 1 set of safety wire, screws and anchors
- quick guide
- safety instructions

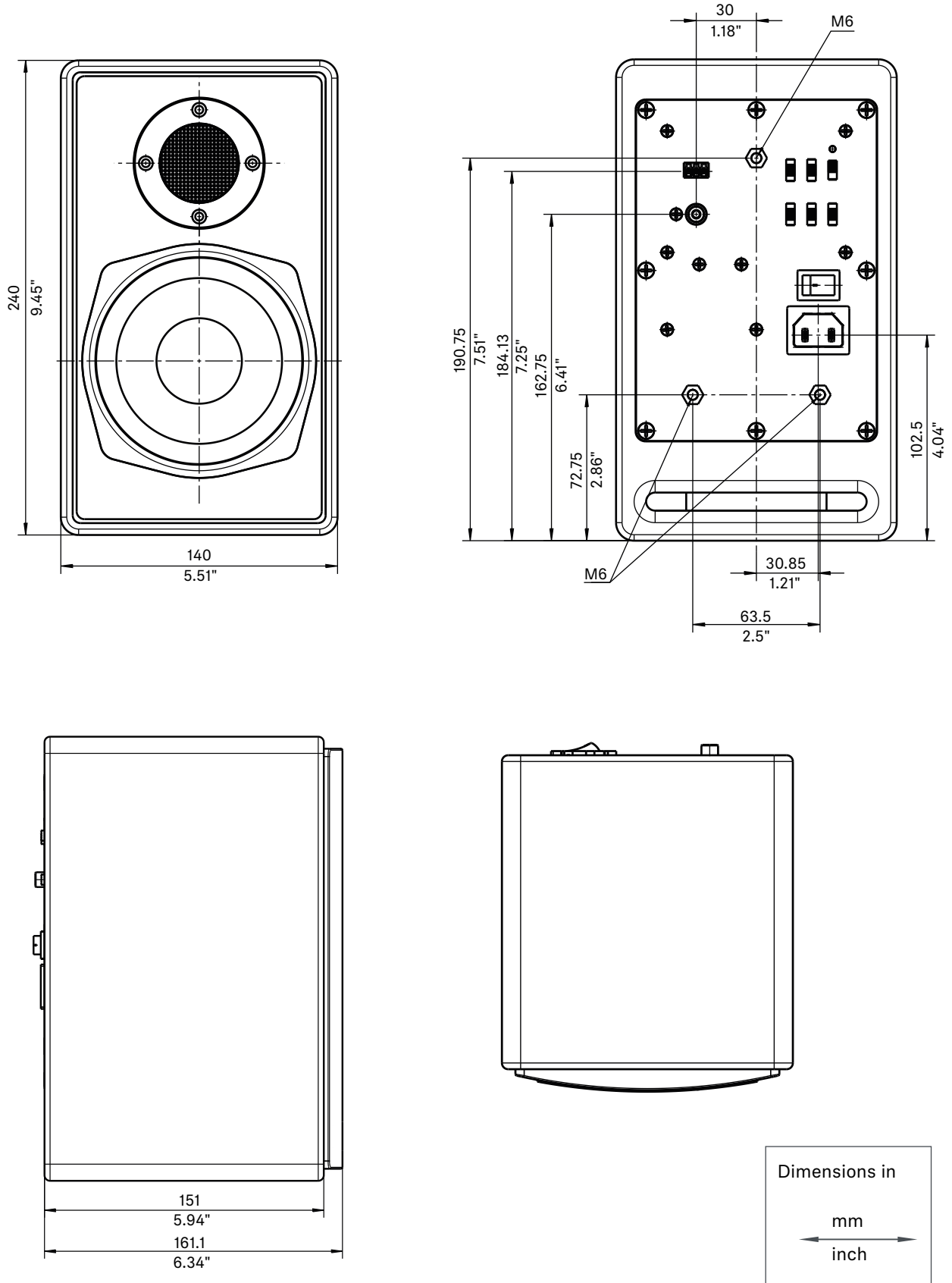
* The mains cable is not included in the delivery. Mains cables with different lengths and for different countries are available as an accessory.



SL Loudspeaker 52 A

Conference Loudspeaker

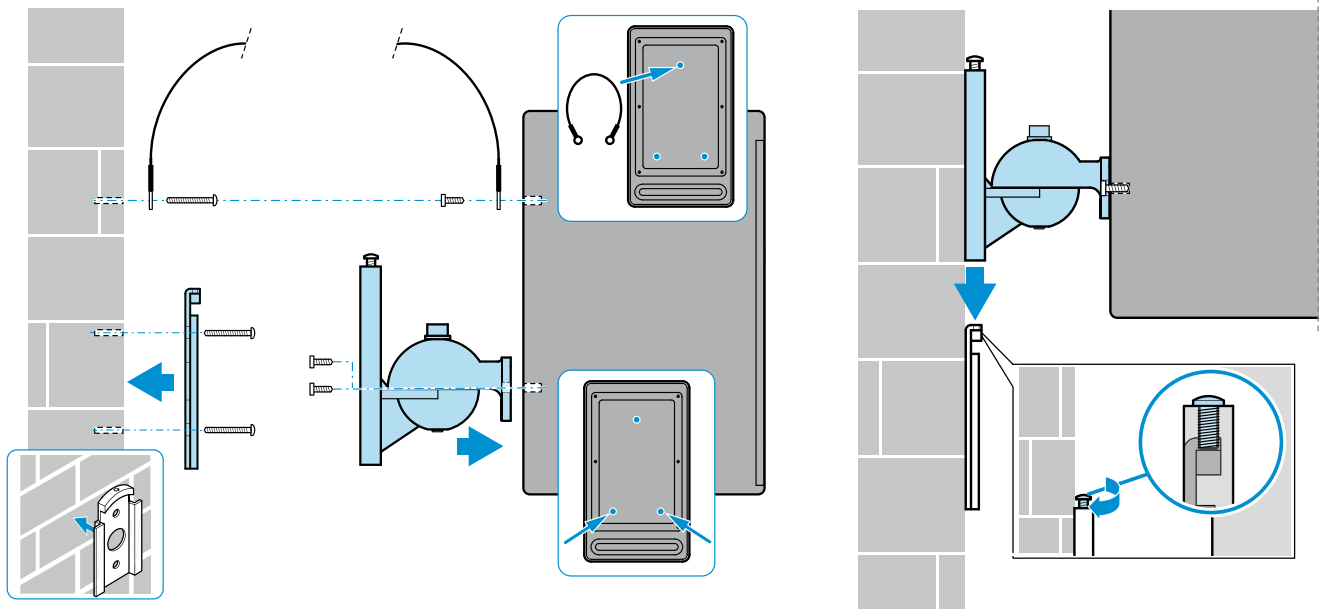
DIMENSIONS



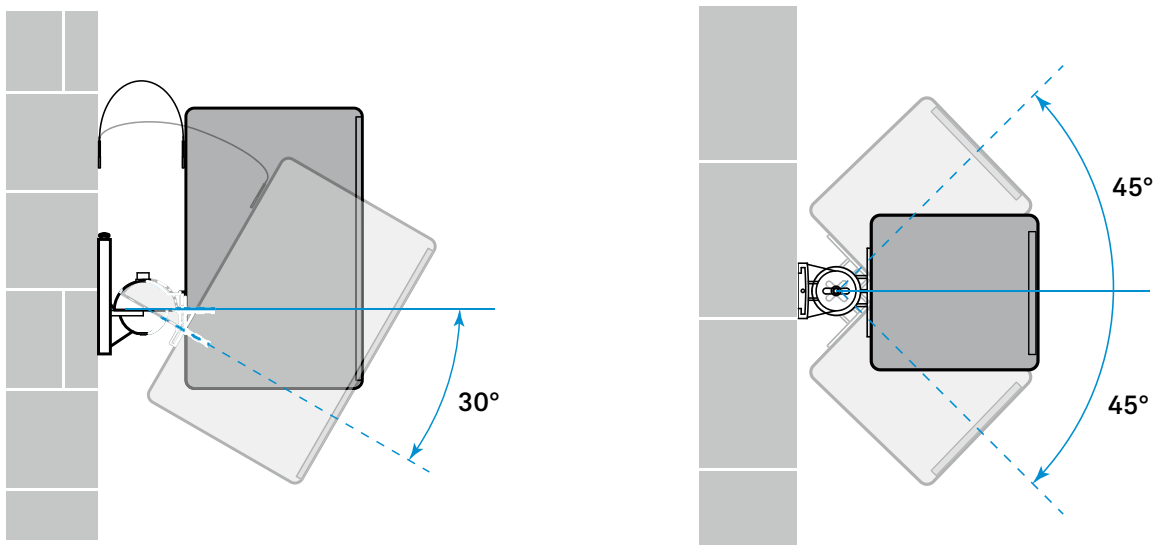


SL Loudspeaker 52 A Conference Loudspeaker

MOUNTING



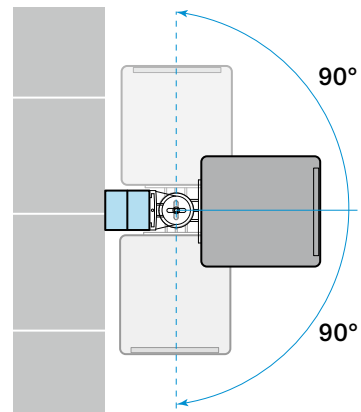
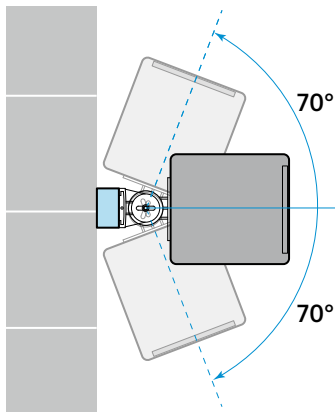
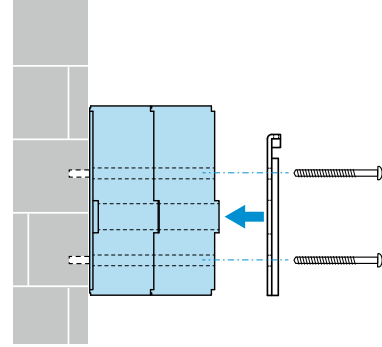
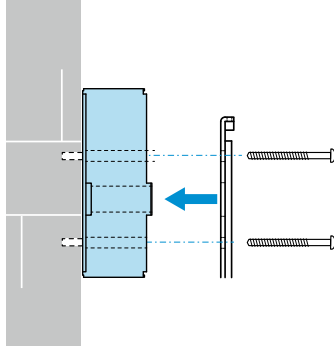
POSITIONING





SL Loudspeaker 52 A Conference Loudspeaker

SPACERS



PRODUCT VARIANTS

SL Loudspeaker 52 A W

Art. No. 506243

ACCESSORIES

Mains cable white 5 m EU	Art. No. 506276
Mains cable white 0.75 m EU	Art. No. 506273
Mains cable white 5 m UK	Art. No. 506277
Mains cable white 0.75 m UK	Art. No. 506274
Mains cable white 5 m US	Art. No. 506278
Mains cable white 0.75 m US	Art. No. 506275