

FOLDING BASES ASSEMBLY INSTRUCTIONS

Step 1

Unfold the unit from the center and lay flat. [Figure 1](#)

Step 2

Raise all six legs to the upright position. Each of the four end legs have a leg brace. [Figure 2](#)

Step 3

Rotate the leg braces on all end legs to hook into the bolts and tighten with installed wing nuts. [Figure 3](#)

Step 4

Turn the base over and upright. [Figure 4](#)

For Twin and Twin XL your base is complete. For all other sizes repeat steps 1 thru 4 for the additional base.

Step 5

Note: T and TXL sizes doesn't require this step

Align both bases side by side in the place where you intend to install the unit.

Attach the two bases together by inserting one of the bolts A into Bed 2 hole on the side of the main cross bar and through into Bed 1 by putting a spacer C between beds. Repeat for other end. [Figure 5](#)

ASSEMBLY HARDWARE
Only for Full, Queen, King and Cal King sizes

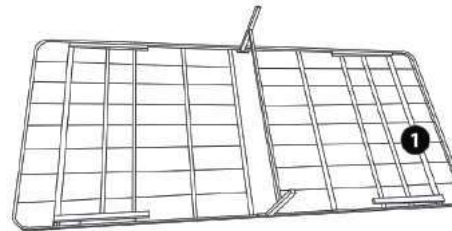


Figure 1.

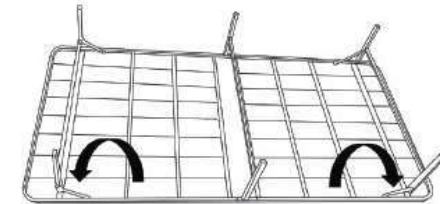


Figure 2.

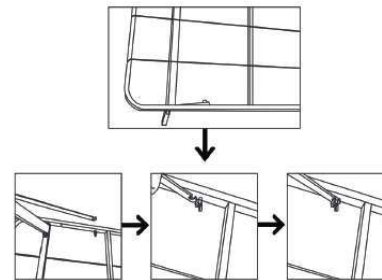


Figure 3.



Figure 4.

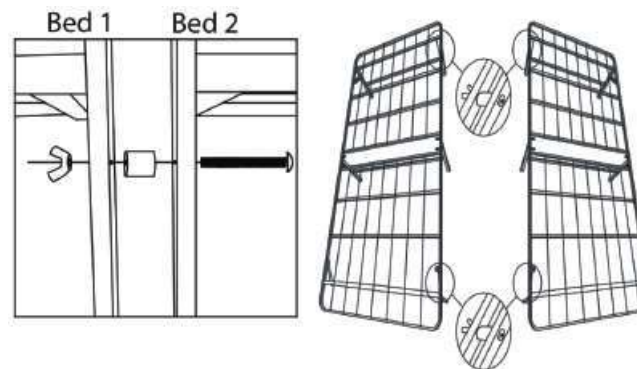
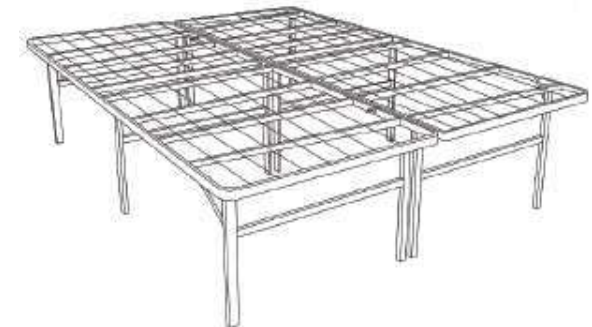


Figure 5.



ASSEMBLY COMPLETE



CONTACT US AT:
customerservice@wsilvermx.com
or TOLL FREE USA 1-888-737-3102
www.wsilverproducts.com