



Marbella PL446



Comfort Zone™
by ULTRACOMFORT

Take a vacation from your busy day in the Marbella by UltraComfort. This medium-size power lift recliner offers an overstuffed seam back design and plush chaise pad providing hours of unmatched comfort. When it comes to reclining, your positioning options are endless with our 4-Zone Comfort Zone Positioning System which includes our patented Stellar Positioning, adjustable headrest and adjustable lumbar all operated by our programmable AutoDrive hand control. Also standard is a USB charging port for your phone or tablet conveniently placed on the side of the chair

Standard features:

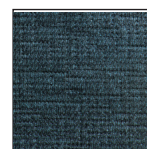
- Patented Stellar Positioning
- Adjustable Headrest
- Adjustable Lumbar
- Programmable AutoDrive Hand Control
- USB Charging Port
- SmartTek Diagnostic System

Now available in new Standard Fabrics!

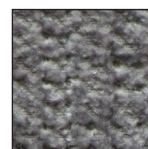
UltraComfort™
AMERICA
Comfort That's Patented™



Antler



Lakefront



Fog

PL446 Marbella

Model Number	PL446-MED	PL446-LAR
Size	Medium	Large
Weight Capacity	375 LBS	375 LBS
Positioning	Stellar	Stellar
Comfort Zone(s)	4	4
Eclipse Technology	NO	NO
Chaise Seat	YES	YES
Pocketed Coil Seat	YES	YES
Back Type	Seam	Seam
Removable Back Type	Bracket	Bracket
Head Rest Cover	NO	NO
Arm Rest Covers	NO	NO
Overall Width	34"	35"
Overall Height	43.5"	46"
Width Between Arms	22"	22.5"
Floor to Top of Seat	20.5"	22"
Seat Depth	21"	21.5"
Seat to Top of Back	28"	30"
Seat to Top of Arm	7"	7.5"
Distance Required from Wall Reclined	24"	26"
Extension Reclined from Back of Seat to End of Foot Rest	42.5"	44"
Life Time Warranty, Chair Frame, Lift Frame, Recline Mechanism	YES	YES
Warranty on Electrical Parts	3 YR	3 YR
Pro Rated Years 4 Thru 7	YES	YES
Warranty on Mechanical Labor	3 YR	3 YR
Warranty on Electrical Labor	1 YR	1 YR
Hand Control Routing	Inside Arm	Inside Arm
Extra Pocket Option	Standard	Standard
Heat & Massage Option	NO	NO
Articulating Headrest Option	Standard	Standard
Adjustable Lumbar Option	Standard	Standard
AutoFlex Option	NO	NO
Foot Rest Extension Option	NO	NO
Straight Lift Option	YES	YES
USB Charging Port	Outside Arm	Outside Arm
Battery Backup	NO	NO
Place of Origin	China	China



shown in
Antler



Scan with your
smartphone camera
to learn more about
Comfort Zone by
UltraComfort.

Smart Tek Diagnostic System STANDARD on all
UltraComfort models

Comfort Zone™
by ULTRACOMFORT



Comfort Zones 1 - 4 provide an ergonomic comfort experience with an emphasis on head and back support. Each Comfort Zone can be adjusted independently by using the exclusive AutoDrive hand control.



COMFORT THAT'S PATENTED™

Designed and
engineered in
Old Forge, PA.
Assembled in
China.

Literature is current at time of printing. UltraComfort reserves the right
to make changes to the product or literature at any time.

Sizes may vary depending on fabric, filling material,
upholstery and carpet thickness. All measurements
taken on concrete floor using levels and metal rulers.



Complies with
UL 73 and
CSA C22.2 No. 68

UltraComfort™
AMERICA
Comfort That's Patented™

Phone: 866-793-5100
www.ultracomfort.com

Like us on Facebook
[Facebook.com/UltraComfortAmerica](https://www.facebook.com/UltraComfortAmerica)

SHT-UC476-092623