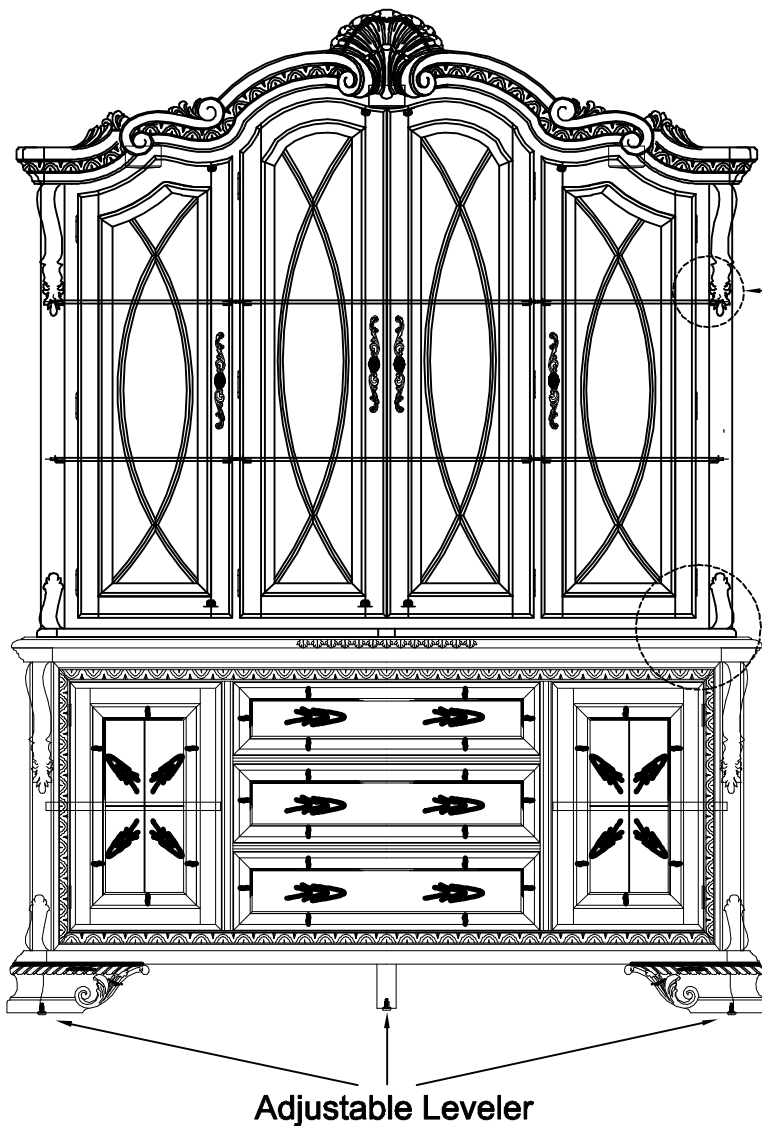


# ASSEMBLY INSTRUCTION

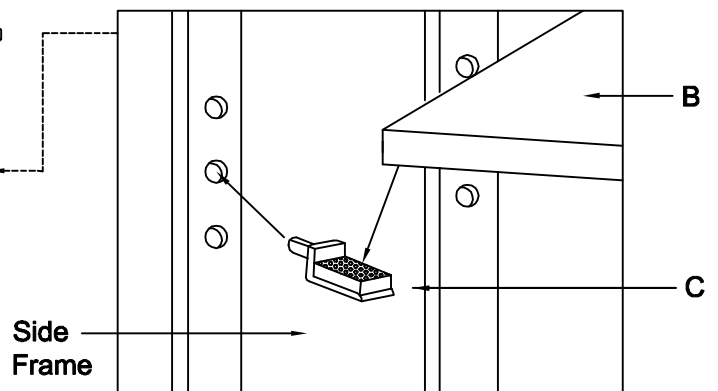
43242 & 43243  
CHINA DECK & CHINA BASE

Thank you for purchasing this quality product. Be sure to check all packing material carefully for small parts, which may have come loose inside the carton during shipment. Identify and count all parts and compare with the Parts List below.

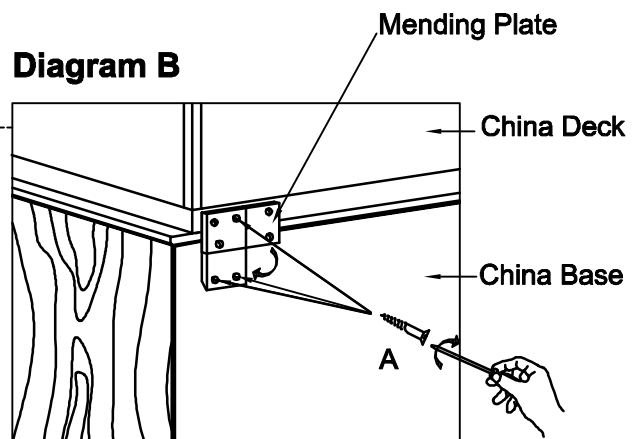
## Front View Of OPEN CHINA DECK & CHINA BASE



**Diagram A**



**Diagram B**



**Back View of Mending Plate**  
Attach China Deck to China Base by Mending Plate.

NO.		Parts List	Q'ty
A		Screw	6
B		Glass	6
C		Glass Support	24

It is suggested that at least two people work together to attach the China desk to the base with two mending plates, as shown in Diagram B.