

# C2N-SPWS300

## Cresnet Power Supply, 300 Watts

Crestron control systems can put a friendly face on any complete integrated AV or automation solution. To support the myriad touchpanels, keypads, and other peripherals that make up a control system, the C2N-SPWS300 provides a convenient and compact centralized power and termination solution.

### Intelligent Power Distribution

The C2N-SPWS300 is a 300 Watt regulated power supply designed for powering a large network of Cresnet devices. Power is supplied on eight individually managed outputs. Each output is rated for up to 75 Watts, with a total system rating of 300 Watts. Electronic circuit breaker protection is provided on every output, which can be individually monitored and reset from the control system. The voltage level at each output can even be monitored along with ambient temperature and fault status for the complete power supply system.

### Sequential Switching

To minimize current inrush upon startup, the C2N-SPWS300 implements sequential switching of its eight outputs. The startup process may be activated automatically when AC power is applied, or when 24 Volts DC is sensed coming from the control system or another power supply.

### Cresnet Distribution

Connected to the Master port of any 2-Series Crestron control system, the C2N-SPWS300 provides a total Cresnet distribution solution.



### SPECIFICATIONS

#### Load Ratings

Per Channel: 75 Watts (3.125 Amps) @ 24 Volts DC regulated  
System Total: 300 Watts (12.5 Amps) @ 24 Volts DC regulated  
Ripple / Noise: <150 mV  
Load Protection: Electronic circuit breaker per channel, each rated at 75 watts nominal / 100 watts maximum; 4 Amp, 125V internal fuse; all channels shut off in case of total system overload  
Sequential Startup: Outputs activate sequentially when power supply system is enabled (see PWR ON, PWR OFF/SLAVE control)

#### Power Requirements

4 Amps, 100-240 Volts AC, 50/60 Hz

#### Connections

1 - 8: (16) 4-pin 5mm detachable terminal blocks comprising (2) paralleled Cresnet ports per each of (8) output channels;  
NET: (1) 4-pin 5mm detachable terminal block;  
Ordinarily connects to the Master Cresnet port of a control system;  
Cresnet data 'Y' and 'Z' terminals pass through

# C2N-SPWS300

## Cresnet Power Supply, 300 Watts

AC Line : (1) attached input power cable (~1 ft long) with inline IEC320 socket;

### Controls

PWR ON, PWR OFF/SLAVE: (1) rocker switch; enables/disables the power supply system if no external DC voltage is applied to the NET port, or selects "SLAVE" mode to allow enabling the power supply system remotely by applying an external 24V DC signal to the NET port  
RESET 1 - 8: (8) miniature pushbuttons; each resets its respective output channel, or momentarily disables the channel while held  
SYSTEM RESET: (1) miniature pushbutton; resets all output channels sequentially, or momentarily disables all channels while held  
SETUP: (1) miniature pushbutton; used for touch-settable ID (TSID)

### LED Indicators

PWR 1 - 8: (green) Indicate 24V DC power present at each channel output  
OVRD 1 - 8: (red) Indicate a load in excess of 75 watts on a given channel, channel output disabled  
SYSTEM OVRD: (red) Indicates a total load in excess of 300 watts on the power supply system, all channels disabled  
PWR: (green) Indicates power supply system is enabled  
NET: (yellow) Indicates communication with Cresnet system  
SETUP: (red) Used for touch-settable ID (TSID)

### Environmental

Temperature: 41° to 104°F (5° to 40°C)  
Humidity: 10% to 90% RH (non-condensing)

### Enclosure

### Dimensions

Height: 5.19 in (13.18 cm)  
Width: 13.25 in (33.66 cm)  
Depth: 3.29 in (8.36 cm)

### Weight

5.3 lb (2.4 kg)

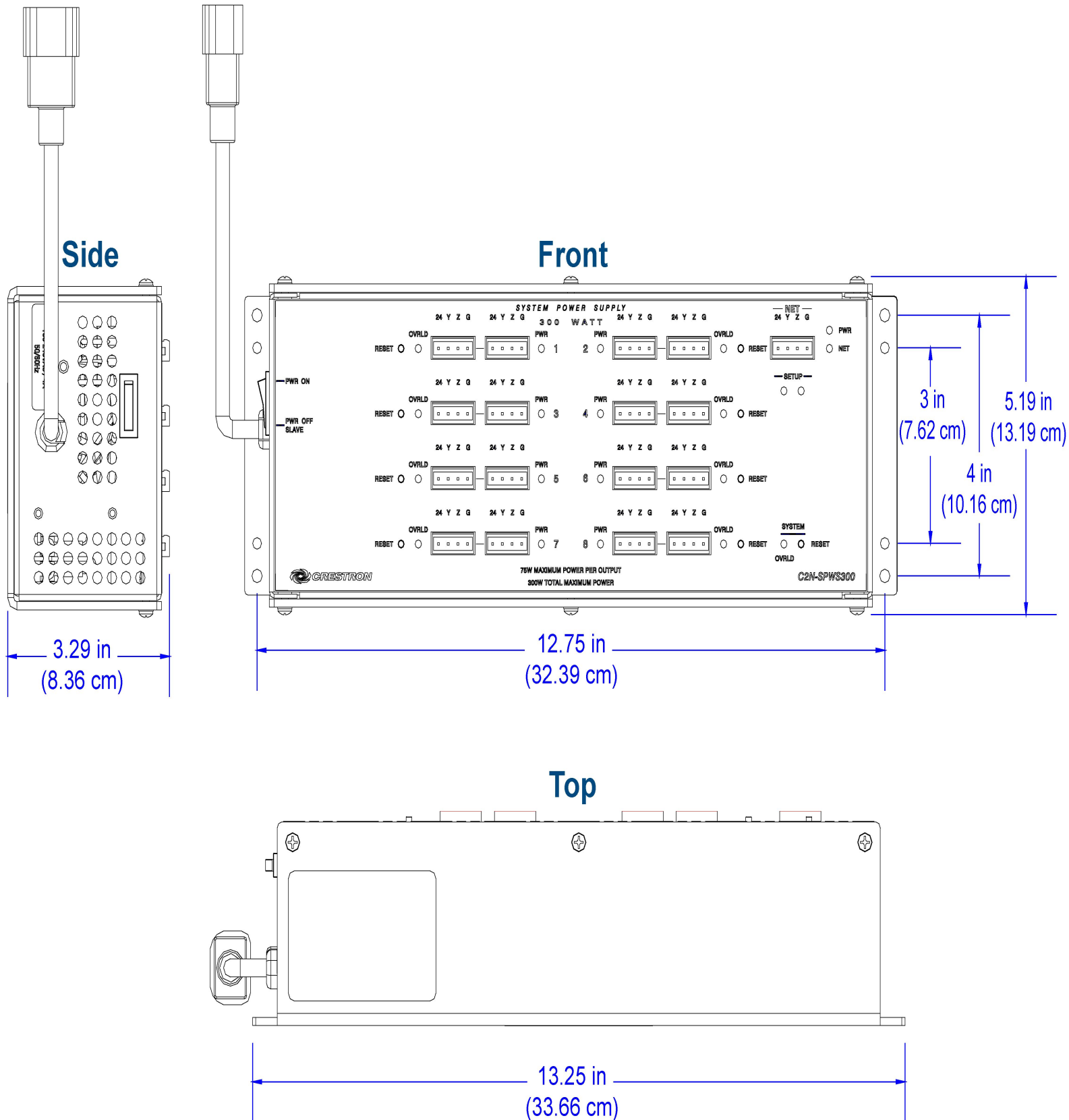
### ACCESSORIES

CAEN-MK:

C2N-RMAK:

# C2N-SPWS300

## Cresnet Power Supply, 300 Watts



# C2N-SPWS300

## Cresnet Power Supply, 300 Watts

