

# ENSEMBLE MAX ROLL ARM 77916

# PALLISER



STANDARD  
PREMIUM FOAM



ROLL ARM



LOOSE BOX  
BORDER SEAT



FABRIC OPTION

## LEG

Espresso Wood Leg  
Rotables  
Castors (Adds 1 inch to overall height)

## FRAME

All Palliser frames are constructed from engineered wood products, hardwood or softwood; joints are pinned and glued for uniformity and strength.

## SEATING COMFORT

Loose seat cushions feature high-resiliency, high density foam core with a polyester wrap  
Seat Suspension: Heavy gauge sinuous springs, engineered to provide premium comfort and endurance.

## FUNCTION

N/A

## COVERS

Fabric  
Leather  
Leather Alternative  
Leather Match  
Select pieces avail in Accent Fabrics

# ENSEMBLE MAX ROLL ARM 77916

# PALLISER



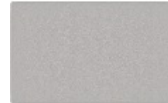
**01 Sofa**  
92 x 40 x 31"  
234 x 102 x 79 cm  
IA: 78" / 199 cm



**02 Chair**  
40 x 40 x 31"  
102 x 102 x 79 cm  
IA: 26" / 67 cm



**03 Loveseat**  
66 x 40 x 31"  
168 x 102 x 79 cm  
IA: 52" / 133 cm



**04 Ottoman**  
43 x 28 x 19"  
110 x 72 x 49 cm



**10 Armless Chair**  
31 x 40 x 31"  
79 x 102 x 79 cm



**13 Right-Hand Facing Sofa**  
**12 Left-Hand Facing Sofa**  
85 x 40 x 31"  
216 x 102 x 79 cm



**15 Right-Hand Facing Chaise**  
38 x 66 x 31"  
97 x 168 x 79 cm



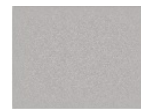
**16 Left-Hand Facing Chaise**  
38 x 66 x 31"  
97 x 168 x 79 cm



**19 RHF Bumper**  
**20 LHF Bumper**  
70 x 40 x 31"  
178 x 102 x 79 cm



**33 Swivel Chair**  
40 x 40 x 31"  
102 x 102 x 79 cm  
IA: 26" / 67 cm



**63 Storage Ottoman**  
45 x 35 x 18"  
115 x 89 x 46 cm



**81 Armless Finished Chair**  
31 x 40 x 31"  
79 x 102 x 79 cm



**90 Armless Apartment Sofa**  
62 x 40 x 31"  
158 x 102 x 79 cm



**91 Apartment Sofa**  
76 x 40 x 31"  
194 x 102 x 79 cm  
IA: 62" / 158 cm



**92 LHF Apartment Sofa**  
69 x 40 x 31"  
176 x 102 x 79 cm



**93 RHF Apartment Sofa**  
69 x 40 x 31"  
176 x 102 x 79 cm



**9B Small Corner**  
40 x 40 x 31"  
102 x 102 x 79 cm



**9W Wedge Corner**  
47 x 47 x 31"  
120 x 120 x 79 cm



**A1 Grande Sofa**  
100 x 40 x 31"  
254 x 102 x 79 cm  
IA: 86" / 219 cm



**A2 LHF Grande Sofa**  
93 x 40 x 31"  
237 x 102 x 79 cm



**A3 RHF Grande Sofa**  
93 x 40 x 31"  
237 x 102 x 79 cm



**B1 Studio Sofa**  
84 x 40 x 31"  
214 x 102 x 79 cm  
IA: 70" / 178 cm



**B2 LHF Studio Sofa**  
77 x 40 x 31"  
196 x 102 x 79 cm



**B3 RHF Studio Sofa Split**  
**B4 LHF Studio Sofa Split**  
117 x 40 x 31"  
298 x 102 x 79 cm



**08 Right-Hand Facing Loveseat**

**07 Left-Hand Facing Loveseat**  
59 x 40 x 31"  
150 x 102 x 79 cm

Dimensions shown as Width x Depth x Height.

Dimensions are correct at the time of printing and are subject to change without notice. Actual measurements for each item may vary from what is shown here. Please allow up to a +/- 1 inch difference. Availability may vary by region.

## POPULAR CONFIGURATIONS



**B2/9B/B3**  
116 x 116"  
295 x 295 cm



**B4/90/15**  
112 x 135"  
285 x 343 cm



**20/9W/19**  
117 x 117"  
298 x 298 cm



**A2/9W/90/15**  
147 x 140"  
374 x 356 cm

## DIMENSIONS

Seat Depth: 27" / 69 cm  
Seat Height: 17" / 43 cm  
Arm Depth: 39" / 100 cm  
Arm Height: 23" / 58 cm

Dimensions shown as Width x Depth x Height.

Dimensions are correct at the time of printing and are subject to change without notice. Actual measurements for each item may vary from what is shown here. Please allow up to a +/- 1 inch difference. Availability may vary by region.