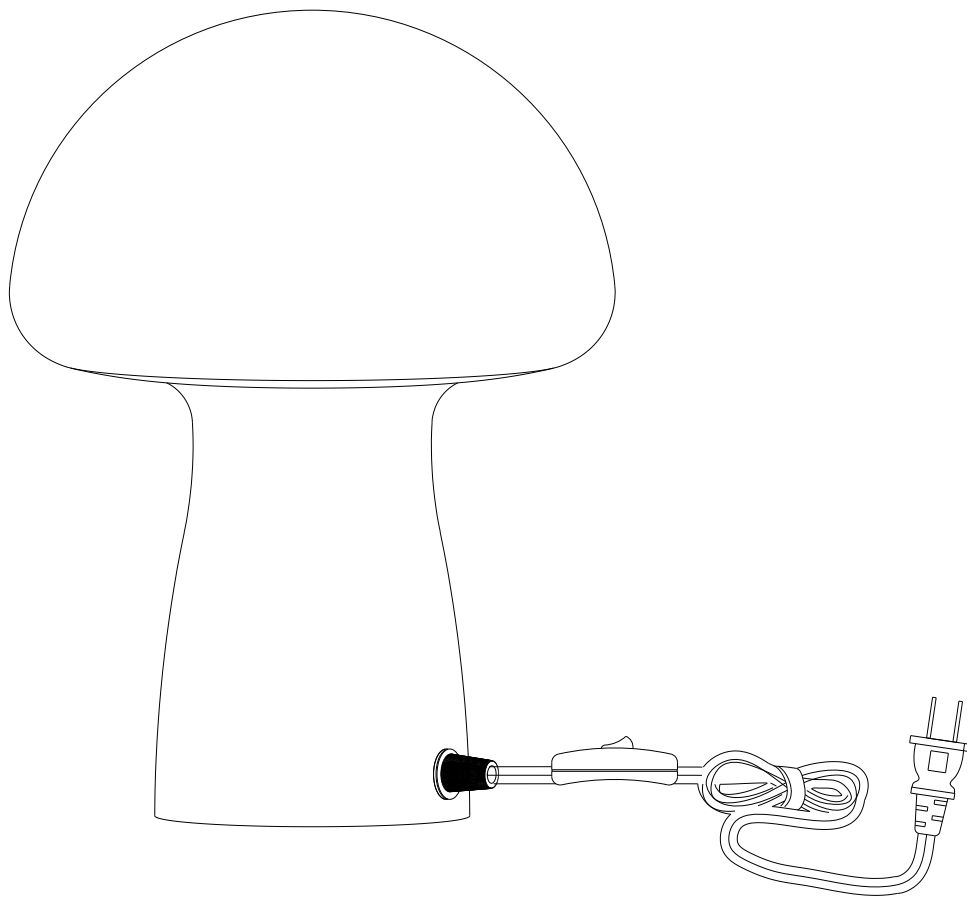


ASSEMBLY INSTRUCTIONS *COASTER FINE FURNITURE*



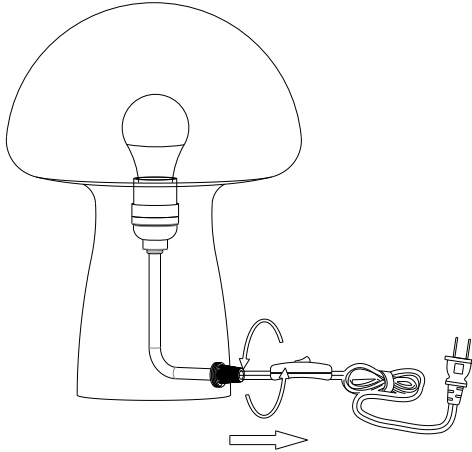
Fine Furniture for every stage of life

REVISION 0:12/20/2024

920249
TABLE LAMP

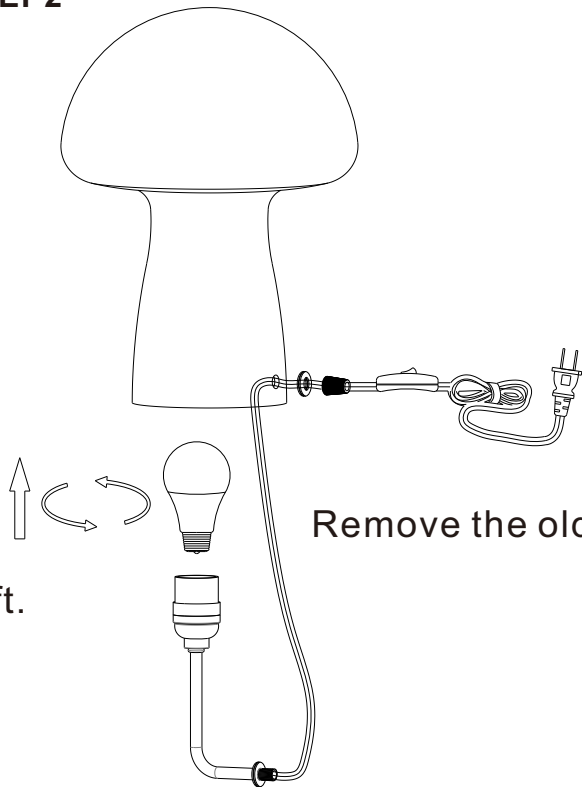
How to change the bulb?

STEP1



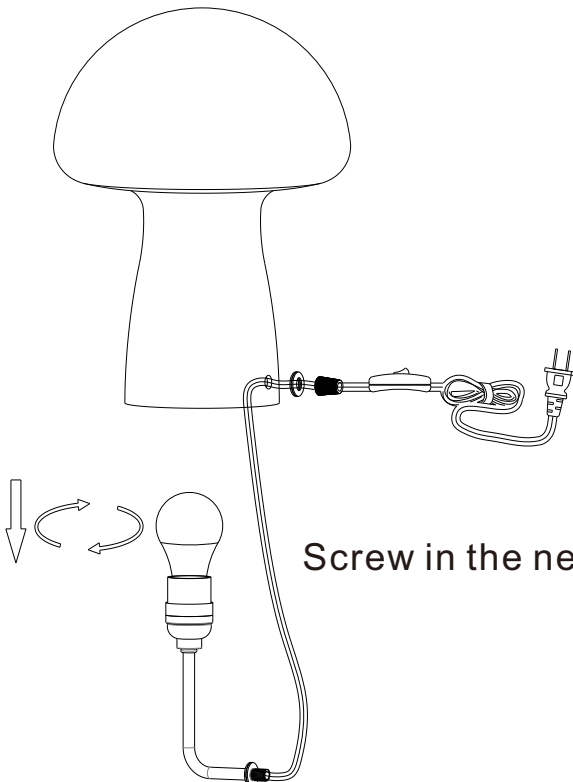
Unscrew the cap by turning it to the left.

STEP2



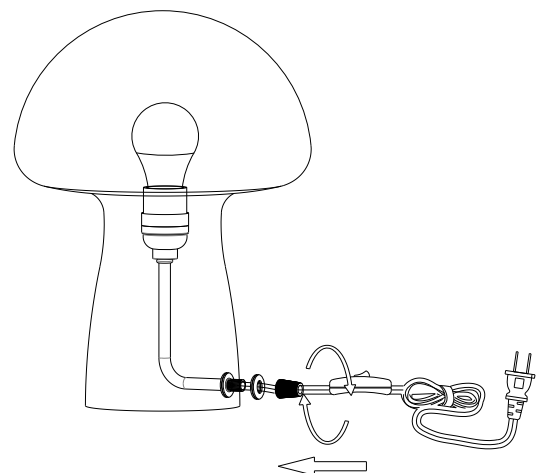
Remove the old bulb.

STEP3



Screw in the new bulb.

STEP4



Screw the cap back, until is properly tightened.

As a safety feature, and to reduce the risk of electric shock, this portable lamp includes a polarized plug (one blade is wider than the other). The plug will fit into a polarized outlet in a single direction only. If the plug does not fit fully in the outlet, reverse the plug and try again. If it still does not fit, contact a qualified electrician. DO NOT use with an extension cord unless, can be fully inserted. DO NOT alter the plug

TABLE LAMP:TYPE A LED BULB 9W

