



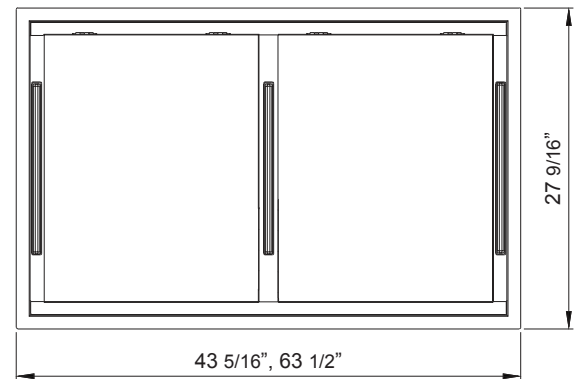
63" Stainless Steel



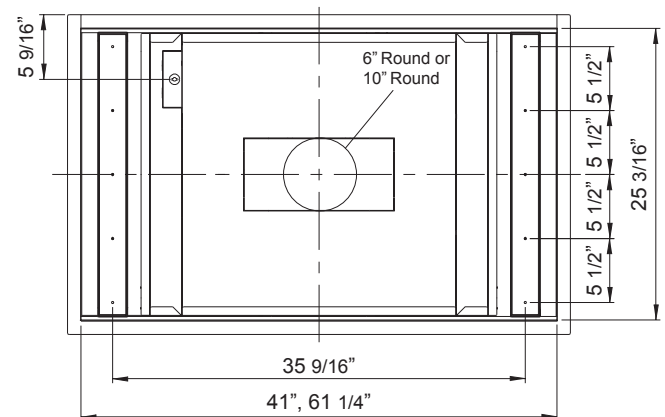
43" White



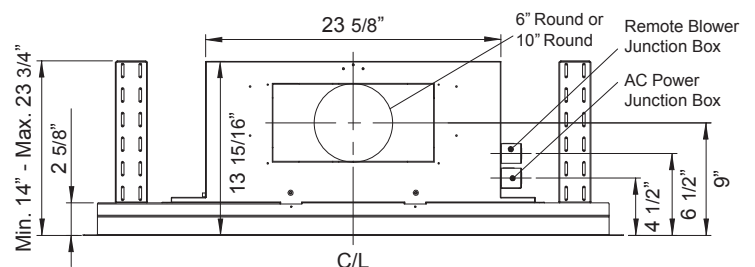
Includes Wireless Remote Control



Front*



Top



Side

*ALU-E43 has 2 panels, ALU-E63 has 3 panels

MODEL

Stainless Steel
White
Size

ALU-E43CSX
ALU-E43CWX
43"

ALU-E63CSX
ALU-E63CWX
63"

PERFORMANCE

Internal Blower (CBI-290C)*
Internal Blower (CBI-390A)*
Internal Blower (CBI-600A)*
Internal Blower (PBI-1100B)*
In-Line Blower (PBN-1000A)*
External Blower (CBE-1000)*

200-290 CFM, 1.4-3 sones
200-390 CFM, 1.4-5 sones
240-600 CFM, 1.8-6 sones
500-1,100 CFM, 3.5-8 sones
500-1,000 CFM, sones NA
500-1,000 CFM, sones NA

200-390 CFM, 1.4-3 sones
200-290 CFM, 1.4-5 sones
240-600 CFM, 1.8-6 sones
500-1,100 CFM, 3.5-8 sones
500-1,000 CFM, sones NA
500-1,000 CFM, sones NA

FEATURES

Zephyr Connect App Compatible
Alexa & Google Home Compatible
Controls
Speed Levels
Auto Delay-Off
CleanAir Function**
Lighting
Tri-Level Lighting
Filters
Perimeter Aspiration System
Wireless Remote Control
Recirculating***
ADA Compliant

Yes
Yes
Capacitive Touch
3
Yes
Yes
BriteStrip™ LED x3 (10W)
Yes
Aluminum Mesh x4
Yes
Yes, RF
Yes
Yes
Yes

Yes
Yes
Capacitive Touch
3
Yes
Yes
BriteStrip™ LED x4 (10W)
Yes
Aluminum Mesh x6
Yes
Yes, RF
Yes
Yes
Yes

DUCT SPECIFICATIONS

Vertical Internal Blower
Vertical In-Line/External Blower
Horizontal Internal Blower
Horizontal In-Line/External Blower

6"(CBI), 10"(PBI)
10"
6"(CBI), 10"(PBI)
10"

6"(CBI), 10"(PBI)
10"
6"(CBI), 10"(PBI)
10"

AC POWER

Hood w/ CBI-290C
Hood w/ CBI-390A
Hood w/ CBI-600A
Hood w/ PBI-1100B
Hood w/ PBN-1000A
Hood w/ CBE-1000

120V, 60Hz, Max. 1.05A
120V, 60Hz, Max. 2.1A
120V, 60Hz, Max. 3.05A
120V, 60Hz, Max. 5.75A
120V, 60Hz, Max. 5.75A
120V, 60Hz, Max. 6.55A

120V, 60Hz, Max. 1.05A
120V, 60Hz, Max. 2.1A
120V, 60Hz, Max. 3.05A
120V, 60Hz, Max. 5.75A
120V, 60Hz, Max. 5.75A
120V, 60Hz, Max. 6.55A

OPTIONAL ACCESSORIES

Recirculating Kit
Make-Up Air Kit

ZRC-01LX
MUA006A (600 CFM)
MUA008A (1,000 CFM)
MUA010A (1,100 CFM)

ZRC-01LX
MUA006A (600 CFM)
MUA008A (1,000 CFM)
MUA010A (1,100 CFM)

MOUNTING HEIGHT RANGE†

30" - 72"

30" - 72"

WARRANTY

1 year parts, 1 year labor

1 year parts, 1 year labor

CEILING HEIGHT	6'	6.5'	7'	7.5'	8'	8.5'	9'
MOUNTING HEIGHT†	36"	42"	48"	54"	60"	66"	72"

*Blower sold separately.

**CleanAir turns your hood on once every four hours for 10 minutes on speed one.

***Recirculating kit is only compatible with CBI-290C and CBI-600A blowers.

†Mounting height refers to distance between top of a 36" tall cooking surface and bottom of hood.

DID YOU KNOW?

The Perimeter Aspiration System (PAS) moves airflow away from the central area of the hood and evenly distributes it through narrow openings around the perimeter of the hood. This ventilation method increases air velocity and improves the capture of cooking contaminants.



Zephyr Connect App

Zephyr Connect App allows you to control your range hood from anywhere using your mobile device. It includes real time diagnostics and provides important product information. All you need is a WiFi connection with access to the internet. It seamlessly integrates with your smart devices such as Amazon Alexa or Google Home smart speaker for voice activation. Available to download from Google Play or the App Store.