

LG SIGNATURE

WM9998HBA

LG SIGNATURE 5.8 cu ft. Smart Front Load Washer & Dryer Combo

KEY FEATURES

- 5.8 cu.ft. Capacity
- TurboWash® 360 Technology
- TrueBalance® Anti-Vibration System
- EZ Dispense
- 31 Wash Programs
- Steam Technology



LG ThinQ®



Control Panel



Dispenser



ThinQ App

PRODUCT FEATURES

SUMMARY		WASH DETAILS		SMART FEATURES (THINQ® TECHNOLOGY)	
Capacity (cu.ft.)	5.8 cu.ft.	No. of Wash/Rinse Temps	5	Smart Diagnosis (v3.0)	Yes
Matching Electric Dryer	DLEX9900B		Extra Hot, Hot, Warm, Cold, Tap Cold	Wi-Fi	Yes
Matching Gas Dryer	DLGX9901B	No. of Spin Speeds	5	ThinQ Care	Yes
Color	Brushed Black Steel		Extra High, High, Medium, Low, No Spin	ThinQ UP	Yes
ENERGY		MAX RPM	1300	Remote Start/ Cycle Monitor	Yes
ENERGY STAR® Most Efficient	Yes	Water Levels	Load Sensing	Energy Monitoring	Yes
ENERGY STAR® Certified	Yes	No. of Soil Levels	5	Tub Clean Coach	Yes
CEE Tier	Tier 3	DRY DETAILS		MOTOR	
IMEF	3.2	Dry Mode	Energy, Normal	Motor Type	Inverter Direct Drive Motor
IWF	2.6	No. of Dry Mode	2	Axis	Horizontal
CEF	7.6	Dry Level	Damp, Normal, Very	MATERIALS AND FINISHES	
APPEARANCE		No. of Dry Level	3	NeveRust® Stainless Steel Drum	Yes
Touch Buttons	Yes	Dry Time	20, 30, 40, 50, 60, 70, 80, 90, 100, 110, 120, 130, 140, 150, 160, 170, 180, 190, 200, 210, 220, 230, 240	Cabinet	Painted Steel
LCD Display	Yes	No. of Dry Time	23	Control Panel	X (Cabinet Cover One Piece)
WASH PROGRAM		FABRIC CARE FEATURES		Top Plate	VCM
	31	AI DD®	Yes (2.0)	Door / Rim	Glass / Chrome
	Normal, AI Wash & Dry, Quick Wash, Timed Dry, Heavy Duty, Bedding, Towels, Jeans, Delicates, Perm. Press, Allergiene™, BrightWhites™, Sanitary, Overnight Care, Rinse & Spin, Spin Only, Activewear, Hand / Wool, Air Dry, Quick Tub Rinse, Tub Clean, Small Load, Large Load, XL Load, Kids Wear, Color Care, Sweat Stains, Swimwear, Dresses, Down Jacket Refresh, Blanket Refresh	TurboWash® 360 Technology	Yes	Door Cover	Tempered Glass Door
Number of Programs		TurboWash® Technology	Yes	All Available Color	Brushed Black Steel (B)
		Steam Technology	Yes	POWER SOURCE	
		Allergiene® Cycle	Yes	Ratings	UL Listed
		Sanitary Cycle	Yes	Electrical Requirements	120V, 12 Amps
		Cold Wash Option	Yes	Type	Electric
		Soil Level Sensor	Yes	Plug	Included
		CONVENIENCE FEATURES		Plug Type	3 Prong
WASH OPTION		TrueBalance® Anti-Vibration System	Yes	OPTIONS / ACCESSORIES	
	20	Dispenser	ezDispense cartridge (Detergent, Softener)	Pedestal	WDP8B
	TurboWash®, Steam, Wrinkle Care, Pre-wash, Remote Start, Delay Start, Wi-Fi, Extra Rinse, Control Lock, Drum Light, Cold Wash, Detergent Level, Softener Level, Signal, Cycle List Edit, Cycle Optimization, Softener Tank Use, Damp Signal, Dry Start Signal, Pre-dry Spin	End of Cycle Signal	Yes	Pedestal (WxHxD)	29 x 13 5/8" x 29 1/2" (44 3/4" D with door open)
Number of Options		LoadSense	Yes	LG Sidekick® Pedestal Washer	WD405CB
		Control Lock	Yes	LG Sidekick® Pedestal Washer (WxHxD)	29" x 14 1/8" x 30 7/8" (52 3/4" with drawer open)
		Auto Suds Removal	Yes	Stacking Kit	Not Stackable
		Leveling Legs	4 Adjustable Legs	DIMENSIONS	
		Drumlight	Yes	Product (WxHxD)	29" x 40 3/4" x 31 1/8"
		ezLintFilter™ Plus	Yes	Depth with Door Open	54 5/16" D
		Auto Cleaning Condensor2.0 (with Jet Spray)	Yes	Carton (WxHxD)	31 3/8" x 44 3/4" x 33 3/4"
				Weight (Product/Carton)	263lbs. / 280 lbs.
				LIMITED WARRANTY	
				Parts and Labor	2 Year
				Direct Drive Motor	10 Years
				Drum	3 Years
				UPC CODE	
				WM9998HBA	195174129319

© 2025 LG Electronics USA, Inc. All rights reserved. "LG Life's Good" is a registered trademark of LG Corp. All other product and brand names are trademarks or registered trademarks of their respective owners. Design, features and specifications are subject to change without notice. Non-metric weights and measurements are approximate. Some features may require Internet access. Content and services may vary by product and are subject to change without notice. 3/19/26

WM9998HBA

LG SIGNATURE Front Load Washer & Dryer Combo

QUICK INSTALL & CLEARANCES

For full installation directions/clearances please refer to the corresponding User Manual and Installation Guide.

DIMENSIONS

A	54 5/16" (138cm)
B	31 1/8" (79cm)
C	4" (10cm)
D	1" (2.5cm)
E	29" (73.7cm)
F	1/4" (0.5cm)
Product Dimensions (in) (W x H x D)	29" x 40 3/4" x 31 1/8"
Carton Dimensions (in) (W x H x D)	31 3/8" x 44 3/4" x 33 3/4"

ENERGY

ENERGY STAR® Most Efficient	Yes
ENERGY STAR® Qualified	Yes
IMEF	3.2
IWF	2.6
CEF	7.6

POWER SOURCE

Ratings	UL Listed
Electrical Requirements	120V, 12 Amps

CONNECTING THE WATER INLET HOSES

To avoid the risk of costly water damage, purchase and install new water inlet hoses when installing the washer.

⚠️ WARNING

- Do not overtighten the hoses or cross-thread the hose fittings. Overtightening or cross-threading can damage the valves or couplings, resulting in leaking and property damage.
- Do not reuse old hoses. Use only new hoses when installing the washer. Old hoses could leak or burst causing flooding and property damage. Contact an LG Customer Information Center for assistance in buying hoses.

1. Check the fittings and seals. Inspect the threaded fitting on each hose and make sure there is a rubber seal ❶ in place in both ends of each hose to prevent leaking.

2. Connect the water supply hoses.

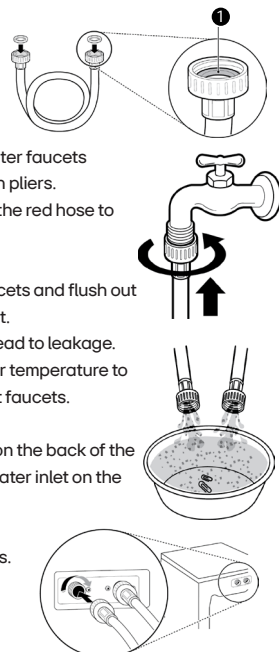
- Connect the water inlet hoses to the hot and cold water faucets tightly by hand and then tighten another 2/3 turn with pliers.
- Connect the blue hose to the cold water faucet and the red hose to the hot water faucet.

3. Flush out the inlet hoses.

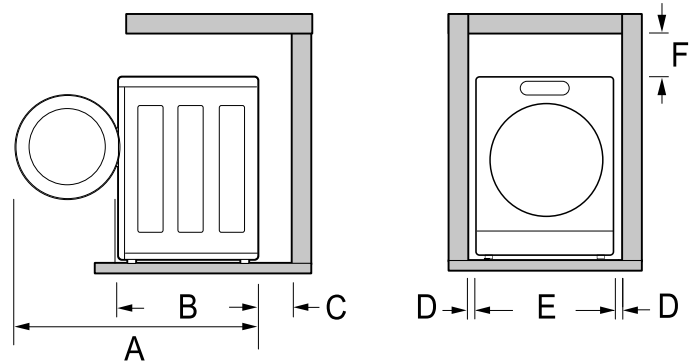
- After the hoses are connected, turn on the water faucets and flush out any foreign substances such as dirt, sand, or sawdust. Foreign substances can damage washer inlets and lead to leakage.
- Let the water drain into a bucket, and check the water temperature to make sure you've connected the hoses to the correct faucets.

4. Attach the inlet hoses to the back of the washer.

- Attach the hot water inlet hose to the hot water inlet on the back of the washer. Attach the cold water inlet hose to the cold water inlet on the back of the washer.
- Tighten the fittings securely. Turn on both faucets all the way and check for leaks at both ends of the hoses.



PRODUCT DIMENSIONS



CHOOSING THE PROPER LOCATION

Check the following requirements for the install location before installing the washer.

- Allow for sufficient space between the walls and the washer for installation.
- Make sure that the floor is clean, dry and free of dust, dirt, water and oil so the leveling feet cannot slide easily. Leveling feet that can move or slide on the floor can contribute to excess vibration and noise.
- If the floor has too much flex, reinforce it to make it more rigid. If the floor is not solid, it may cause severe vibration and noise.
- The power outlet must be within 60 inches (1.5m) of either side of the washer.
- Position the washer so that the outlet and plug are easily accessible.
- Do not overload the outlet with more than one appliance.

CONNECTING THE DRAIN HOSE

Connect the drain hose to either a standpipe or laundry tub.

⚠️ WARNING

- The drain hose should always be properly secured. Failure to properly secure the drain hose can result in flooding and property damage.

Using a Standpipe to Drain

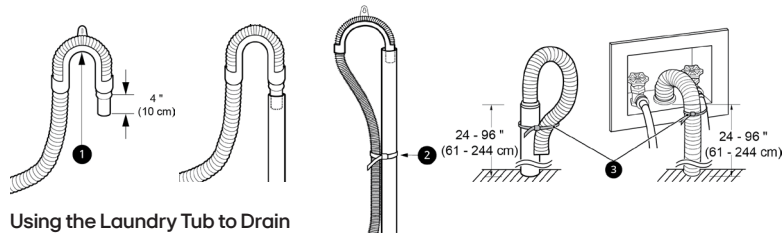
1. Clip the end of the hose into the elbow bracket.

- Connect the elbow bracket ❶ within 4 inches (10 cm) of the end of the drain hose. If the drain hose is extended more than 4 inches (10 cm) beyond the end of the elbow bracket, mold or microorganisms could spread to the inside of the washer.

2. Insert the end of the drain hose into the standpipe.

3. Use the provided tie strap ❷ to secure the drain hose in place.

4. If the water valves and drain are built into the wall, fasten the drain hose to one of the water hoses with the provided tie strap ❸ (ribbed side on inside).



Using the Laundry Tub to Drain

1. Clip the end of the hose into the elbow bracket.

- Connect the elbow bracket ❶ within 4 inches (10 cm) of the end of the drain hose. If the drain hose is extended more than 4 inches (10 cm) beyond the end of the elbow bracket, mold or microorganisms could spread to the inside of the washer.

2. Hang the end of the drain hose over the side of the laundry tub.

3. Use the provided tie strap to secure the drain hose in place.

