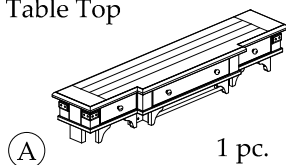


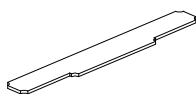
Components and Hardware List

Table Top



1 pc.

Wood Shelf



1 pc.

Corner Post



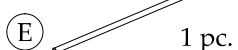
4 pcs.

Front Post



2 pcs.

Long Metal Stretcher



1 pc.

Short Metal Stretcher



2 pcs.

Screw



8 pcs.

Connecting Plate



4 pcs.

Angle Bracket



6 pcs.

Ø5/16-18 x 5/8" Long Allen Head Bolt



12 pcs.

Ø5/16-18 x 1-3/4" Long Allen Head Bolt



8 pcs.

M5/16" Spring Washer



20 pcs.

M5/16" Flat Washer



20 pcs.

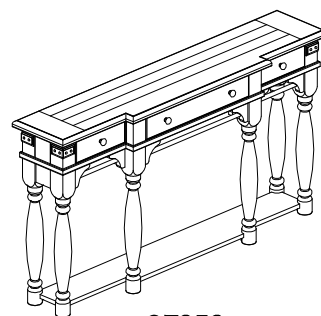
5mm Allen Wrench



1 pc.

27353

Console Table



Be sure to check all packing material carefully for small parts, which may have come loose inside the carton during shipment. To prevent possible scratches or damage, this product should be assembled on a soft surface such as a blanket or carpet, or its own packaging material.

Anti-tip restraint kit

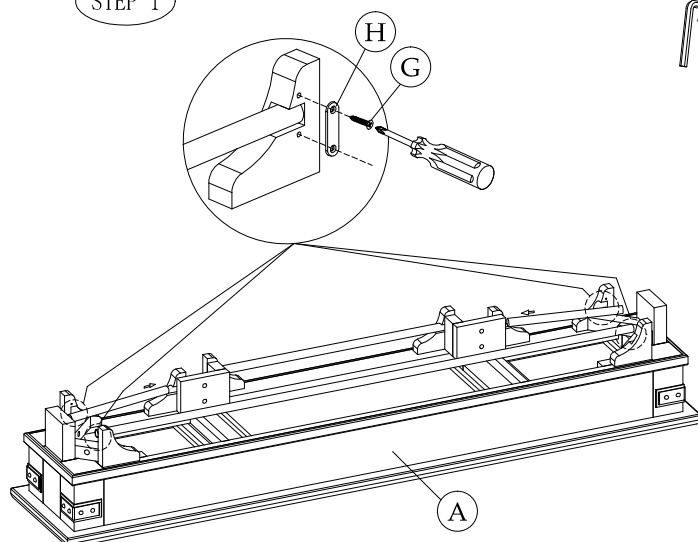


1 pc.

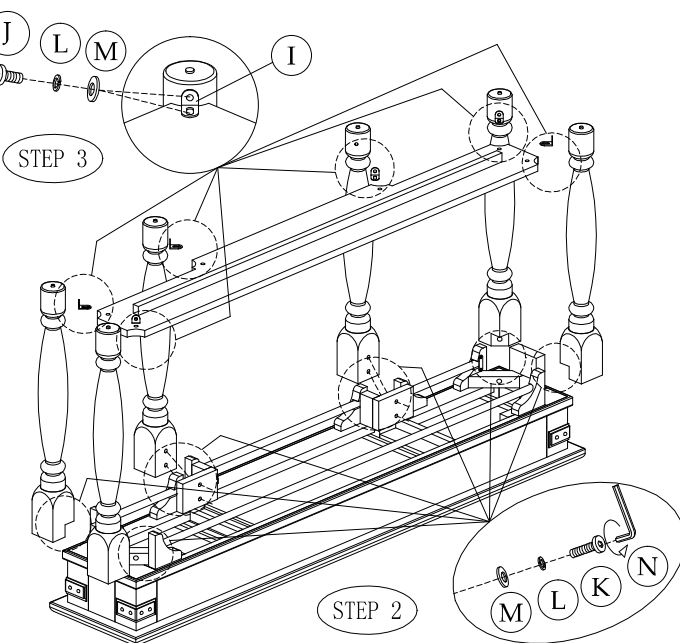
ASSEMBLY STEPS:

1. Place the Table Top upside down and position the Long and Short Metal Stretchers (E & F) into the notches of the front and end base blocks. Secure the Stretchers using the Connecting Plates (H), Wood Screws (G) and your Phillips Screwdriver to install screws.
2. Place the four Corner Posts (C) into the corners of the Table Top and attach with Allen-Head Bolts (K), Spring Washers (L) and Flat Washers (M). Do not fully tighten Bolts until Step 6.
3. Attach the slotted leg of the Angle Brackets (I) to the bottom side of the Wood Shelf (B) using the Flat Washers (M), Spring Washers (L) and 5/8" long Allen Head Bolts (J). Tighten finger tight only.
4. Attach the Wood Shelf to the Corner Posts using the same Bolts and Washers as before. Do not fully tighten Bolts until Step 6.
5. Position and attach the Front Posts to the Top and Shelf using the same Bolts and Washers as before.
6. Tighten the Bolts attaching the top of each Post using the Allen Wrench. Pull the Shelf snug to each Post and tighten Bolts.
7. Carefully set the completed Table upright.

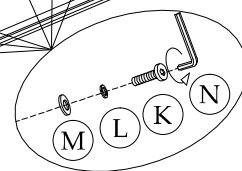
STEP 1



STEP 3

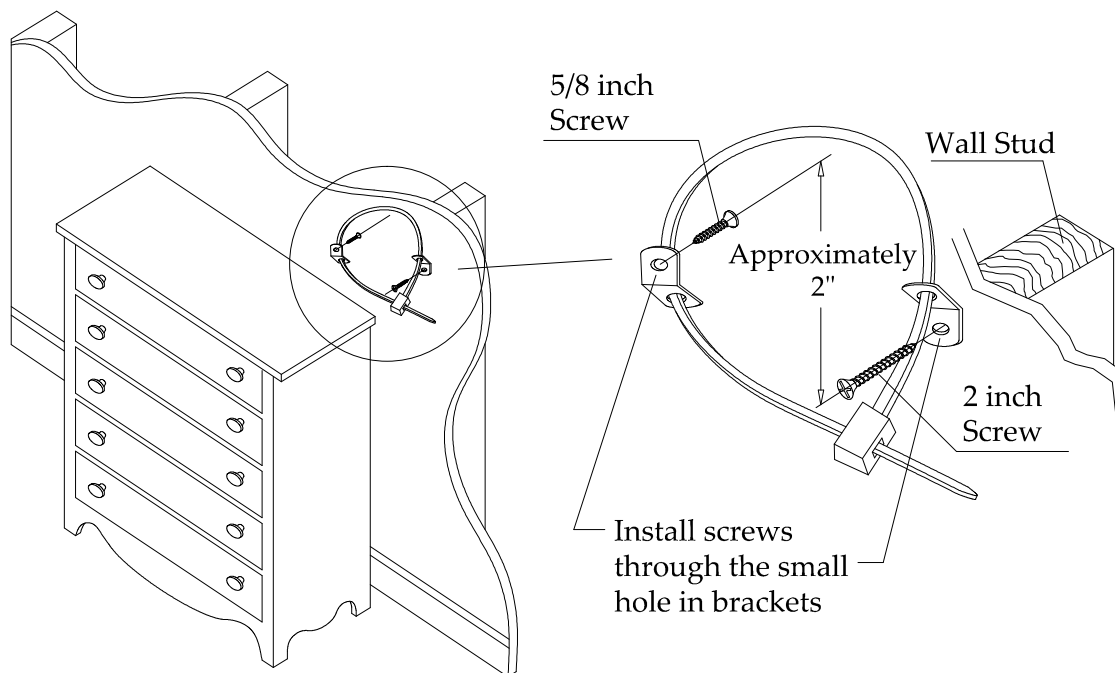


STEP 2



Anti-Tip Hardware Installation Instructions

Notice: Riverside Furniture Corp. recommends that steps be taken for certain furniture items to prevent or minimize the risk of tip-over. This furniture is equipped with Tip-over Restraint Hardware for use to minimize this risk, if used. Please follow below installation steps. Riverside Furniture Corp. recommends that parents and guardians periodically visit the U.S. Consumer Product Safety Commission (CPSC) website at <http://www.cpsc.gov/> and stay up to date on all issues related to children's product safety.



1. Temporarily locate the furniture to near it's final location in the room next to a wall. Locate a wall stud behind your furniture and also mark the stud's location on the back of your furniture.
2. Firmly attach one bracket to the stud approximately 2" below the top of the furniture with the **2 inch long** Wood Screws provided. It may be necessary to drill 3/32 dia. pilot holes for the screws.
3. Firmly attach the other bracket onto a solid, structural part on the back of the furniture using the **5/8 inch long** Wood Screws. It may also be necessary to pilot bore for these screws.
4. Move the furniture into its final position, taking care to line up the wall bracket with the furniture bracket. Thread a strap through the bracket as shown in the illustration. Tighten strap until snug but do not over tighten.

Caution: Riverside Furniture Corp. assumes no liability for improper installation or excessive loads placed on screws, brackets or straps. Failure to detach this restraint before moving furniture may result in personal injury and property damage.

Warning: This tip-over restraint is not to be a substitute for proper adult supervision. Do not allow children to climb on furniture. Items left on top of the TV and furniture, such as toys, remote controls and treats might tempt young children to climb. Push the TV as far back as possible from the front of its stand. Place electrical cords out of a child's reach, and teach children not to play with the cords.