

**BOSS**<sup>®</sup>  
AUDIO SYSTEMS

**BOSS**<sup>®</sup>  
AUDIO SYSTEMS

## **MR4.3W / MR4.3B**

### **USER'S MANUAL**

**4" (102mm) 3-WAY INDOOR/OUTDOOR BOX SPEAKER**

BOSS Audio Systems  
3451 Lunar Court • Oxnard, CA 93030  
[www.bossaudio.com](http://www.bossaudio.com)  
800-999-1236 US Toll-free  
805-751-4853 Customer Service  
Tech Support: [www.bossaudio.com/support](http://www.bossaudio.com/support)



0819



# Introduction

**Introduction** The outdoor speaker series is designed as a weather-resistant multi-purpose interior or exterior speaker and will deliver accurate high fidelity sound in exterior or interior environments. Weather-resistant design and construction provide optimum durability for permanent or temporary outdoor use.

**Important** For simplicity, we will call your AV receiver or amplifier the "receiver."

The grilles are not designed or intended to be removed. Do not remove the grilles from your speakers. There are no user-serviceable parts behind the grille. removal will damage the speaker.

**contents**

PLACEMENT.....	P3
INSTALLATION.....	P4
CONNECTION.....	P5
CONNECTION AND TROUBLESHOOTING.....	P6
SPECIFICATIONS.....	P7

Thank you for choosing Boss Audio. These speakers are designed to provide you with years or enjoyment and satisfaction.

# Specifications

**Specifications**

Model **MR4.3**  
Frequency Response **80Hz-18kHz ,±3dB**  
Woofer **4" (100mm) Polyelite PVA Surround**  
Midrange **40mm polypropylene**  
Tweeter **20mm Piezo Dome**  
Sensitivity **85.5 dB (2.83v @ 1 meter)**  
Nominal Impedance **4 ohms**  
Power Handling\* **200 watts Max.**  
Dimensions (Inches H x W x D ) **31.14" x 2.09" x 2.09"**  
Weight **2.8 lbs.**  
Finish **Black or White**

All Rights Reserved. All specifications subject to change without notice.

Connecting Speakers

**Your Speakers**

Do not allow the positive and negative speaker wire from the receiver to make contact, as this will cause a short.

It is recommended that the wire insulation be stripped back approximately 3/8", allowing the wire conductor to make a proper connection. Make sure that the wire insulation is stripped back far enough so that the bare speaker wire will make a proper connection to the metal clip inside the terminal and be securely held in place. This can be confirmed visually.

**Distortion/Knocking**

Troubleshooting

If you hear obvious distortion from the speakers, immediately lower the volume level of your receiver. Those sounds often indicate that either the receiver or the speaker is being overdriven, and damage can result in playing your source material (music-CDs-DVD-MP3) at high volume levels for prolonged periods of time. You should also avoid turning the bass or treble controls fully up and using your "Loudness button" when the volume level is at or above normal listening levels. Note: The Loudness button on most receivers is designed to add depth when your system is being used for background music or at very low volume.

Distorted or unnatural sound can indicate poor connections, defective electronics, damaged source material or speaker failure. If only one of your speakers has poor sound quality, check the speaker wire and audio connections. If that doesn't fix the problem, try putting each speaker in place of one another (swapping). If the sound remains poor on the suspect speaker after swapping location and the distortion moves with the speaker to the new location, the speaker may be the problem. If the distortion remains in the original location then the problem is elsewhere in your audio/video system.

Speaker Location

**Mounting Location**

If mounting is desired, mount the speakers on a common solid surface facing the listening area will provide the best audio results.

Before mounting anything on a wall, always check for electrical wires. Also note, to mount on a wall that is able to handle the weight of the speakers.

**Speaker Location**

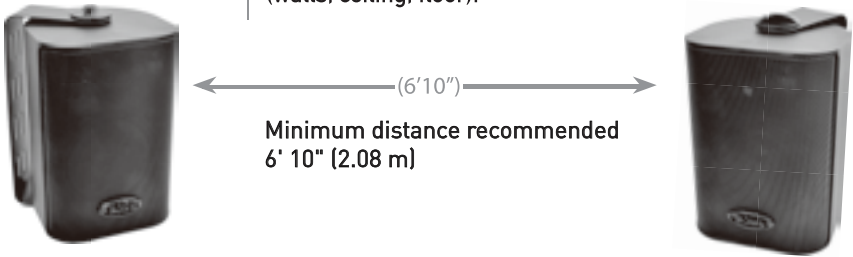
Your speakers can be placed in many convenient locations like inside your home or patio - as stereo pairs on either side of your receiver - as surround speakers in home theater surround sound systems - in your computer room to enhance the multimedia experience - or as remote speakers.

**Wall and Ceiling Mounting**

For wall and ceiling applications, MR4.3 mounting brackets are included. In addition, the MR4.3 has a rear inset keyhole for surface hanging.

**Experiment for Better Sound**

You should experiment with various placements. Room acoustics can produce large apparent differences in the sound when small changes in the placement are employed. For example, although the speaker may be located at any height above the floor, directing the tweeter toward ear level (32" - 36") or angling the entire speaker toward the listening position often provides the most realistic imaging experience. The amount of bass perceived increases as you move a speaker closer to solid intersecting room surfaces (walls, ceiling, floor).

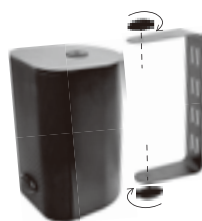


## Placement & Mounting Speakers

### Outdoor Placement



### Mounting Your Speakers



The **MR4.3W/MR4.3B** have been tested for environmental usage and are weather resistant, but not waterproof. Occasional moisture will not affect performance. The speakers should be allowed to ventilate and dry after water exposure.

The speakers can be placed permanently outdoors for year-round enjoyment. To maximize speaker life, position in areas protected from the elements, such as the underside of eaves and overhangs. Popular locations include decks, gazebos, porches, atriums, garages, and covered spa areas.

For temporary placement, remove the speaker from the mounting brackets and replace the thumb screws to maintain stability if placing the speakers on end.

The **MR4.3W/MR4.3B** speakers have a **BOSS** logo that can be rotated. The logo is located on the face of the grille in the event a vertical installation is needed. The logo is spring loaded. Use gentle force when adjusting the logo to a new orientation. To rotate the logo, elevate two ends of the logo equally by placing your nail under and lifting lightly. While the logo is elevated, turn the logo to the desired orientation and release.

For ease of installation, the **MR4.3W/MR4.3B** speaker include an easily removable mounting bracket. Once mounted, the bracket allows the speaker to be pivoted to its ideal location. The included thumb screws knobs will hold the selected speaker position when properly tightened. Avoid over tightening the knob. Before attempting the installation, carefully evaluate the mounting surface, making sure that its composition and construction are strong enough to support the load safely. If you are unsure about the type of mounting hardware for your installation, consult a professional contractor. The anchors and screws to attach the speakers are not included and must be purchased separately. The hardened steel brackets are suitable only for attaching the speaker to walls or ceilings constructed of solid wood, brickwork, concrete, hollow buildings block or wood studs.

Do not mount the bracket to non-reinforced plaster sheetrock (gypsum board). Once the bracket is secure, reattach the speaker using the thumb screws included.

## Connecting Speakers

### Connecting Your Speakers



**Speaker Wire** - Typical speaker wire has a pair of separate speaker wires with insulating jackets that are molded together. **BOSS** recommends the use of two conductor 18-gauge speaker wire to connect your speakers to your receiver. Measure enough wire to reach from your receiver to each speaker plus additional length to allow moving the speakers or receiver without having to disconnect the wires. When connecting the speakers in a stereo configuration, the wire length should be similar. One length should not be dramatically longer or shorter than the other. Maintaining similar wire lengths will provide superior sound quality.

**Polarity** - Speaker wires are marked for polarity consistency so that you can determine the positive and negative identity of the individual wires within the molded pair insulation. Polarity is shown by either a color stripe on the insulation, by ridges molded into one side of the insulation, the color of the insulation case around the wire, or by the color type or colors of the wires/wire itself (copper or silver).

**Important** - Always connect speaker wire using the positive (+) terminal on the receiver to the positive (+) terminal, and the negative (-) terminal on the receiver to the negative (-) terminal. All speakers in a system must be connected with the same respective polarity. The speaker inputs are located on the rear-mounted terminal cup on the back of the speaker.

**Terminal Type** - The **MR4.3** utilizes a push-pin design. Gently depress the colored lever and insert the stiped end of the wire directly into the opening located in the center of the input housing. - The **MR4.3** speaker use a screw type input post. To loosen, turn the gold terminal counter clockwise, insert the wire end and re-tighten. The gold terminal have Red (POS) and Black (NEG) polarity indicators.

