

**MODEL D5636XLHS/PH****FEATURES**

Pro handle and hidden controls

TouchProof™ stainless steel

Turbo Drying™ system

16 place-setting capacity

Quiet operation—46 dB(A)

9Spray™ wash system; separate spray nozzles clean pot & pans and continuously spray cutlery basket

10 wash programs

Delayed start—up to 24 hours

Heavy-duty stainless steel construction with nylon-coated steel racks

LED display

Remaining time and program end indicator

ADA height compliant

**INTERIOR FEATURES**

- Top tray with Instant Lift™
- Premium upper rack
- Premium lower rack

**PROGRAMS**

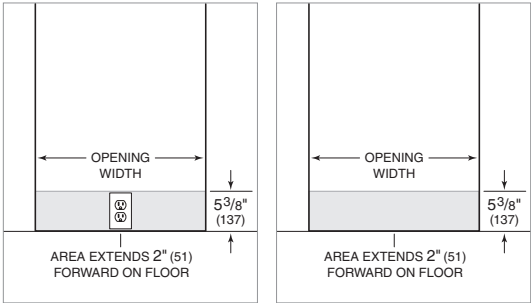
- Sanitation Wash
- Normal Wash
- Heavy Wash
- Quick Wash
- Hygiene
- Delicate Wash
- Eco Wash
- Upper Half
- Lower Half
- Rinse and Hold

PRODUCT SPECIFICATIONS

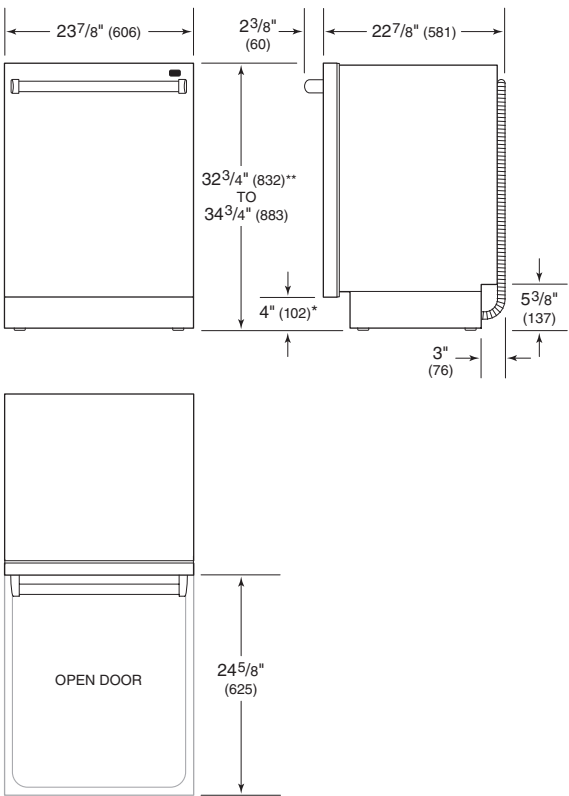
Model	D5636XLHS/PH
Width	23 <sup>7</sup> / <sub>8</sub> "
Height	32 <sup>3</sup> / <sub>4</sub> "*** – 34 <sup>3</sup> / <sub>4</sub> "
Depth	22 <sup>7</sup> / <sub>8</sub> "
Door Clearance	24 <sup>5</sup> / <sub>8</sub> "
Weight	112 lb
Max Loading Height Upper Rack	9"
Max Loading Height Lower Rack	12 <sup>1</sup> / <sub>4</sub> "
Electrical Supply	115 VAC, 60 Hz
Electrical Service	15 amp circuit
Plumbing Supply	1/4" OD copper, braided stainless steel or PEX tubing
Pressure	4.2–140 psi

Electrical supply, plumbing supply and drain should be located in an adjacent cabinet. If not, they must be located within the shaded area shown in the illustrations below.

ELECTRICAL | PLUMBING

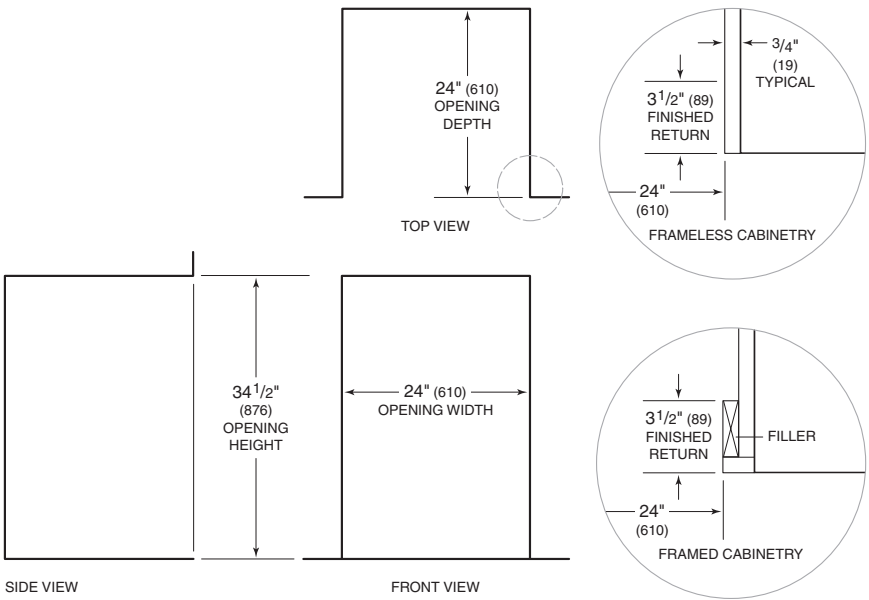


DIMENSIONS



\*Dimension will vary with product height.  
\*\*Can be reduced to 32<sup>1</sup>/<sub>4</sub>" (819) by removing top trim and lowering side trim.

INSTALLATION



NOTE: 3 1/2" (89) finished returns will be visible and should be finished to match cabinetry.