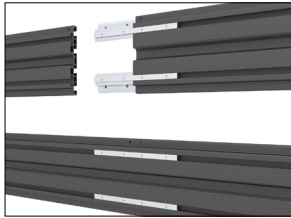


# MB Series Accessories



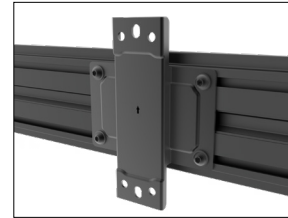
## MB Angle Adapter

Providing up to a 45° angle, this simple adapter can be used with any MB Series mount to accommodate corner installations. Use the provided hardware to connect two extrusions together and adjust the tension screw to lock them at the preferred angle.



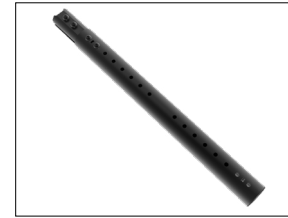
## MB Extrusions

Available in 28, 48, 68 or 100 cm lengths, these supplemental extrusions can be used to accommodate various display sizes and VESA patterns. The MB Series' modular system makes it easy to add additional extrusions, or to swap between larger and smaller ones to ensure a perfect fit. Additional connectors are also available when adding extrusions.



## MB Wall Mount Plate

This wall mount plate provides additional mounting points to any wall-mounted MB Series mount. These can be combined with various lengths of MB extrusions to accommodate a greater number of wall-mounted displays.



## MB Extension Pole

Providing an additional 50 cm of length, this extension pole is compatible with any ceiling-mounted MB Series mount. The provided hardware allows multiple poles to be linked together to achieve the perfect display height.

28 cm Extrusion

MB-E28 | UPC: 800152719191

48 cm Extrusion

MB-E48 | UPC: 800152719207

68 cm Extrusion

MB-E68 | UPC: 800152719214

100 cm Extrusion

MB-E100 | UPC: 800152720142

Angled Connector

MB-EAC | UPC: 800152719238

Extrusion Connectors

MB-EC | UPC: 800152719221

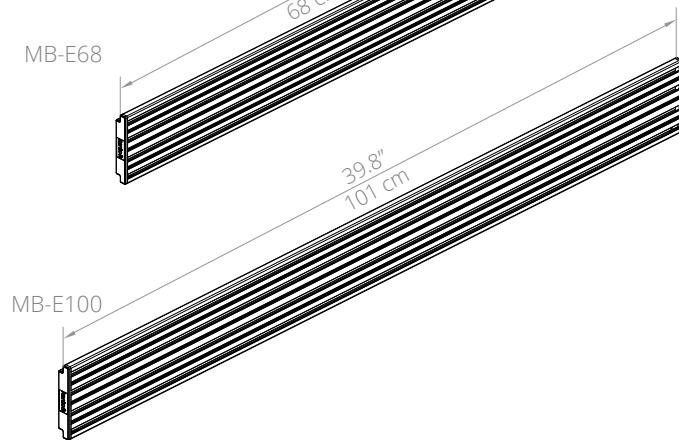
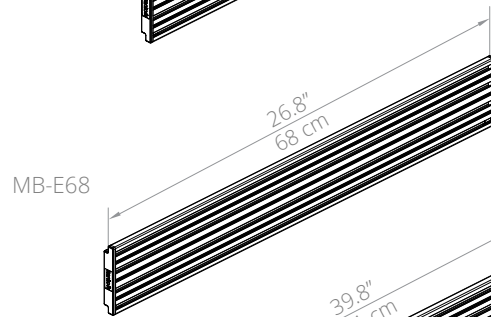
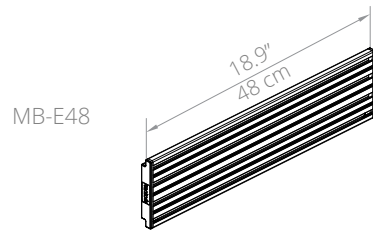
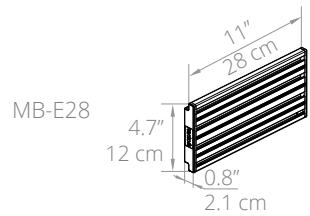
Wall Mount Plate

MB-WM | UPC: 800152720159

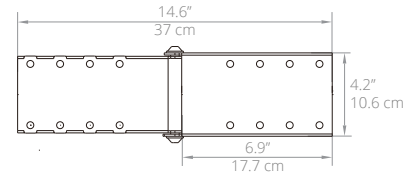
Extension Pole

MBC-EXT50 | UPC: 800152721286

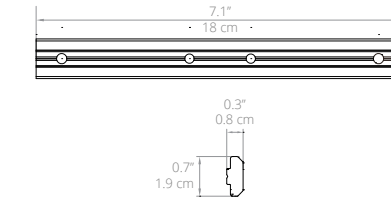
## TECHNICAL ILLUSTRATIONS



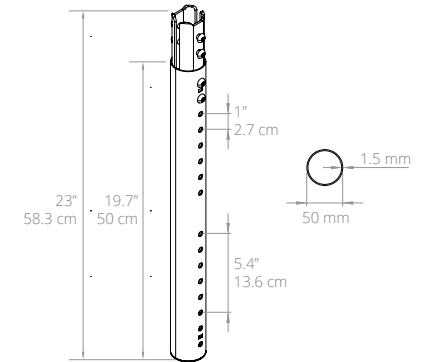
MB-EAC  
ANGLED CONNECTOR



MB-EC  
EXTRUSION CONNECTOR



MBC-EXT50  
EXTENSION POLE



MB-WM  
WALL MOUNT

