


# ASSEMBLY INSTRUCTION FOR


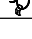
## 3-DRAWER NIGHTSTAND W/USB

### SS550NS

Caution: Please read instructions thoroughly before unpacking assembly parts. Sharp, exposed staple tips can cause injury, therefore, for your protection, please remove any exposed staples used in packing.

1. We recommend that you should assemble this product with the assistance of another person; this will make assembly easier, and will help to eliminate damage the product or injury to persons during assembly.
2. Be sure to check all packing materials carefully for small parts that may have come loose inside the carton during shipment.
3. Please do not over tighten screws or bolts.
4. Please put all parts on a non-abrasive floor before assembly, and follow the assembly steps to assemble your newly purchased product correctly and efficiently.

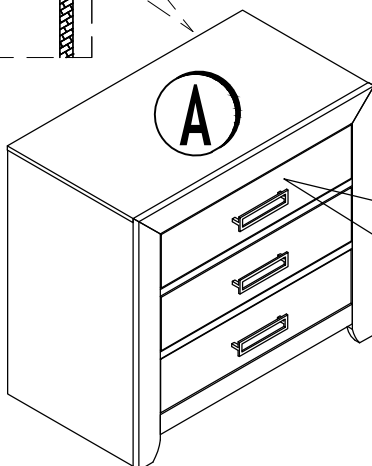
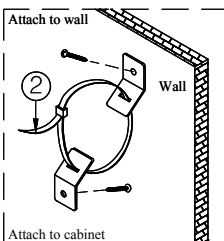
PARTS LIST				
NO.	PART DESC.	PART	CODE	QTY
A	NIGHTSTAND		SS550NS	1 pc

HARDWARE LIST					
NO.	HARDWARE DESC.	PART	SIZE	CODE	QTY
1	PLUG				1 pc
2	TIPPING RESTRAINT			PSS500ATKT	1 pc

#### Important note:

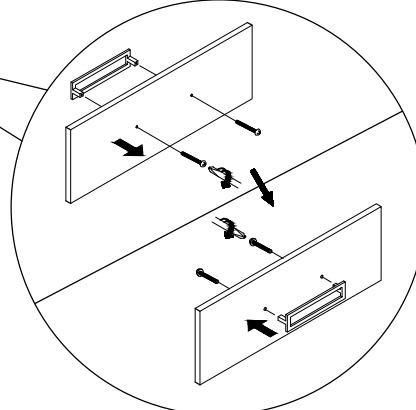
1. Clean using soft cloth.

#### STEP 2



COMPLETED.

#### STEP 1



#### STEP 2

