

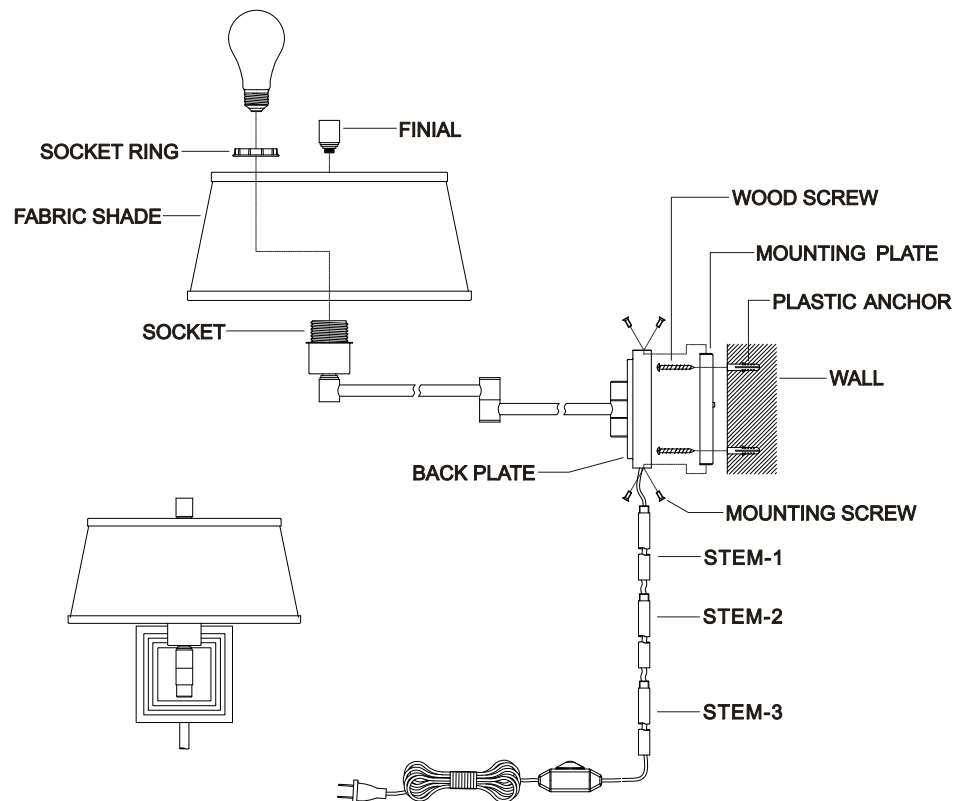
# REVELATION

by UTTERMOST

## ASSEMBLY INSTRUCTIONS

### Illustration for Portable version

ITEM NO: 22586



P.O. Box 558 | 3325 Grassy Hill Road | Rocky Mount, VA | 24151

[www.uttermost.com/Revelation](http://www.uttermost.com/Revelation)

# REVELATION

by UTTERMOST

## ASSEMBLY INSTRUCTIONS

ITEM NO: 22586

### WARNING:

TO AVOID RISK OF ELECTRICAL SHOCK, BE SURE TO SHUT OFF  
WHILE POWER BEFORE INSTALLING OR SERVICING THIS FIXTURE.

**We suggest a licensed professional electrician for installation**

### FOR PORTABLE INSTALLATION ILLUSTRATION

1. Turn power off at fuse or circuit box before starting installation process.
2. Carefully unpack your new fixture and lay out all the parts on a clear surface.
3. Thread the Stem-1 into the bottom of Back plate, Stem-2 into the Stem-1, Stem-3 into the Stem-2.
4. Position the Mounting plate through the fixing holes onto the wall and make marks, drill pilot holes for Wood screws into the wall, then insert the Plastic anchor into the holes.
5. Secure Mounting plate to Wall with wood screws into Plastic anchors in the wall.
6. Mount the Back plate over the Mounting plate and then secure it with Mounting screws.
7. Thread the Finial into the top of Fabric shade.
8. Slide the Fabric shade over the Socket, then secure with the Socket ring.
9. Install the light bulbs (Not Supplied) in accordance with the fixture's specifications. **DO NOT EXCEED THE MAXIMUM WATTAGE RATING!**

P.O. Box 558 | 3325 Grassy Hill Road | Rocky Mount, VA | 24151

[www.uttermost.com/Revelation](http://www.uttermost.com/Revelation)

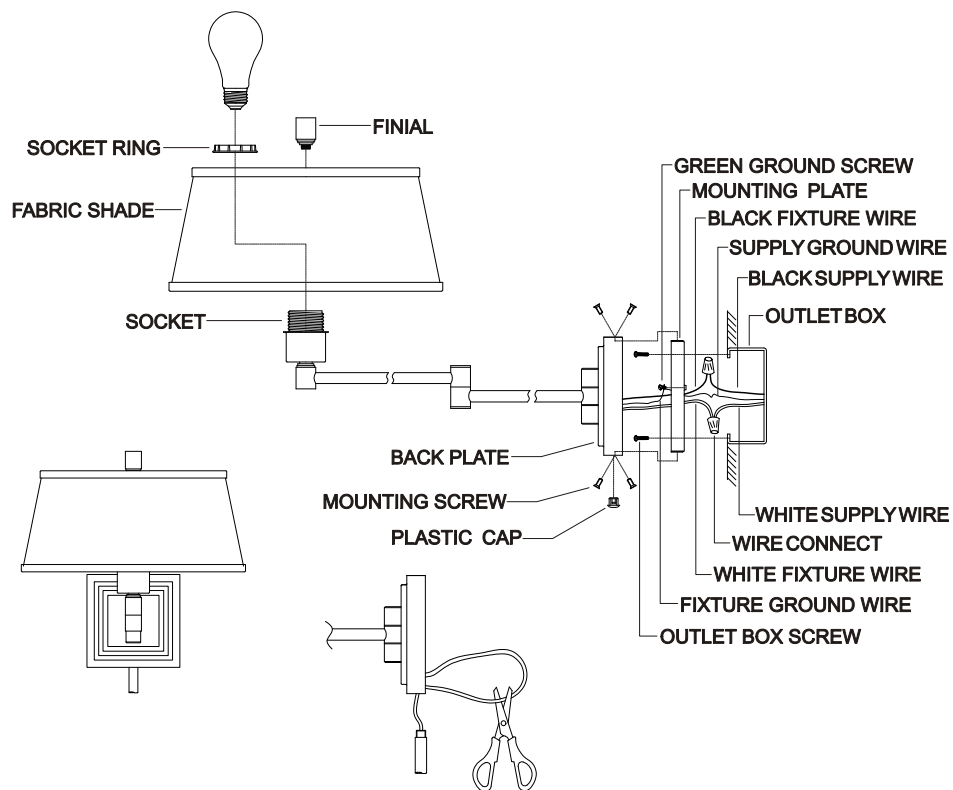
# REVELATION

by UTTERMOST

## ASSEMBLY INSTRUCTIONS

### Illustration for Sconce version

ITEM NO: 22586



P.O. Box 558 | 3325 Grassy Hill Road | Rocky Mount, VA | 24151  
[www.uttermost.com/Revelation](http://www.uttermost.com/Revelation)

# REVELATION

by UTTERMOST

## ASSEMBLY INSTRUCTIONS

ITEM NO: 22586

### WARNING:

TO AVOID RISK OF ELECTRICAL SHOCK, BE SURE TO SHUT OFF  
WHILE POWER BEFORE INSTALLING OR SERVICING THIS FIXTURE.

**We suggest a licensed professional electrician for installation**

### FOR DIRECT WIRE SCONCE INSTALLATION ILLUSTRATION

1. Turn power off at fuse or circuit box before starting installation process.
2. Carefully unpack your new fixture and lay out all the parts on a clear surface.
3. Please cut off the plug wire then remove the plug wire. (The length of the fixture wire can't be less than 6").
4. Secure the Mounting plate to the outlet box with the Outlet box screws.
5. Make Wire connections with Wire Connector:
  - The smooth wire (w/ marking) from fixture to Black Wire from power source.
  - The ribbed wire (w/o marking) from Fixture to White Wire from power source.
  - Attach the Ground Wire and house ground wire to the Mounting plate with the green Ground screw.Carefully tuck wires back into the Outlet Box.
6. Mount the Back plate over the Mounting plate and then secure it with Mounting screws.
7. Install Plastic cap into the bottom hole of Back plate.
8. Thread the Finial into the top of Fabric shade.
9. Slide the Fabric shade over the Socket, then secure with the Socket ring.
10. Install the light bulbs (Not Supplied) in accordance with the fixture's specifications. **DO NOT EXCEED THE MAXIMUM WATTAGE RATING!**

P.O. Box 558 | 3325 Grassy Hill Road | Rocky Mount, VA | 24151  
[www.uttermost.com/Revelation](http://www.uttermost.com/Revelation)