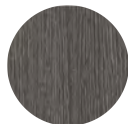


# CUBO Club Chair

# RATANA



Weave: Resin  
Finish: Creamy Oak



Frame: Aluminum  
Finish: Pearl Grey

## FN61201COK



Seat Height\*: 18" w/cushion

Overall Height: 25.5"



Arm Height: 25.5"

Weight: 65 LBS



Depth: 39.5"



Width: 39.75"



## TECHNICAL INFORMATION

- Weave: Resin – Creamy Oak COK round 7mm  
Aluminum – Pearl Grey PGR
- Frame: Aluminum
- Modular design of sectional provides flexibility and style
- Chairs with wood grain finished aluminum legs
- Chair with slanted back and seat panel dropping inwards to offer great comfort
- Interlocking system to secure sectional pieces
- Max. weight load: 350 LBS per seat
- Contract quality
- For outdoor use only

### [www.ratana.com](http://www.ratana.com)

Toll Free Phone: 866.919.1881  
Toll Free Fax: 888.880.8209  
Email: [sales@ratana.com](mailto:sales@ratana.com)  
Website: [www.ratana.com](http://www.ratana.com)