

ASSEMBLY INSTRUCTIONS

MODEL : BE5032-11 CHEST

COMPONENT LIST

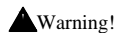
No	Descriptions	Qty
A	Chest	1
B	Tipping Restraint	1



Assembly Tool Not Included

ASSEMBLY TIPS

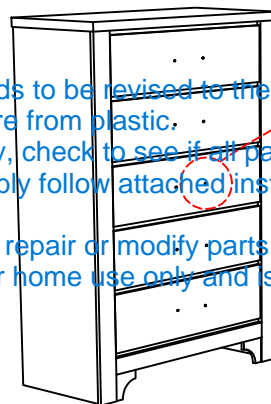
1. Take Out hardware from Plastic.
2. Please check to see that all hardware and parts are present prior start of assembly.
3. Please follow attached instructions in the same sequence as numbered to assure fast and easy assembly.



Warning!

1. Don't attempt to repair or modify parts that are broken or defective. Please contact the store immediately.
2. This product is for home use only and is not intended for commercial establishments.

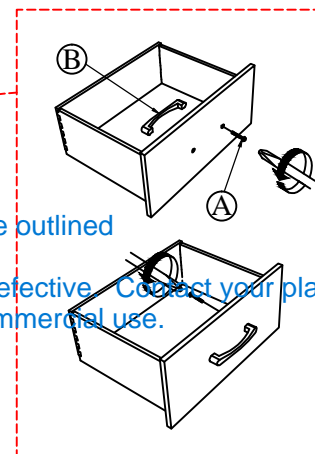
STEP 1



Assembly Tips needs to be revised to the following:

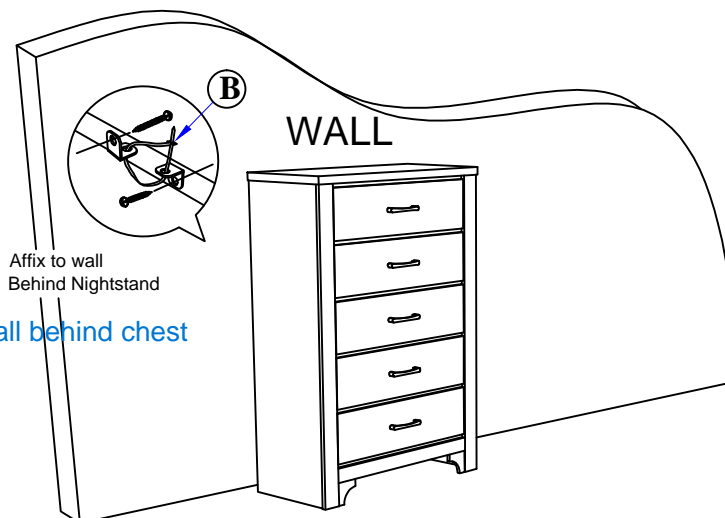
1. Remove hardware from plastic.
 2. Prior to assembly, check to see if all parts are present.
 3. For quick assembly follow attached instructions in sequence outlined
- Warning!

1. Do not attempt to repair or modify parts that are broken or defective. Contact your place of purchase for help.
2. This product is for home use only and is not intended for commercial use.



STEP - A

STEP - B



WALL

Affix to wall
Behind Nightstand

Attach to wall behind chest