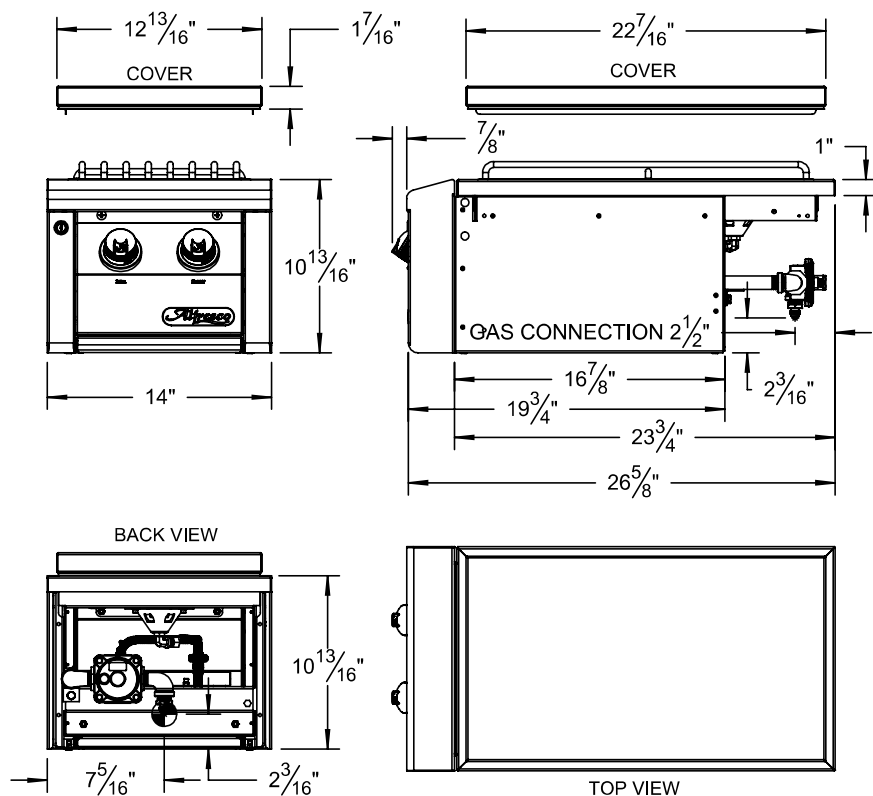
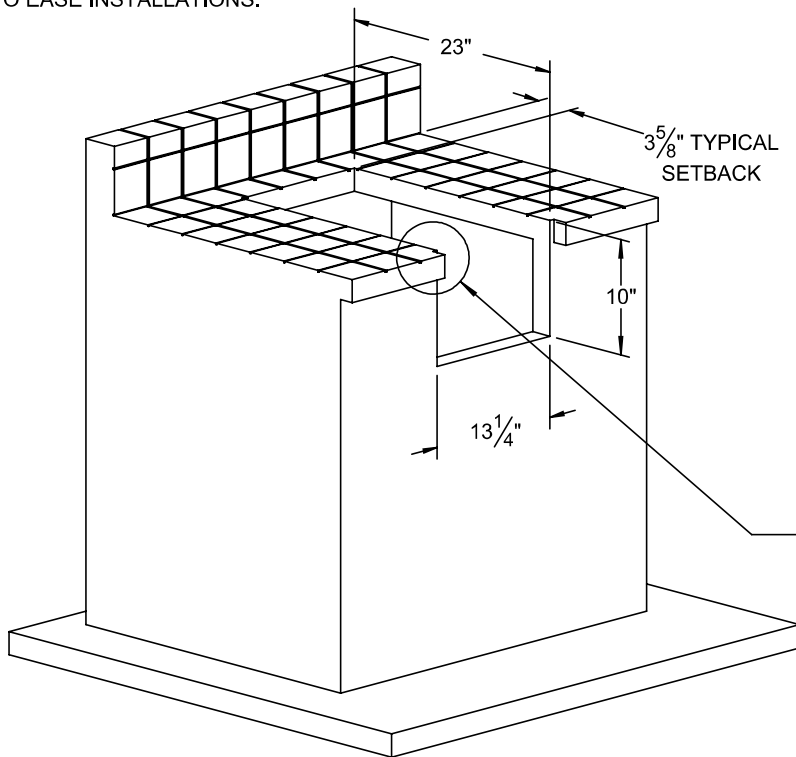


**AXESB-2 TYPICAL INSTALLATION**

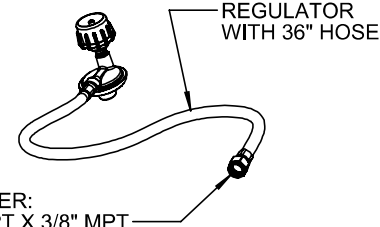


## COUNTERTOP CUTOUT REQUIREMENTS

**NOTE:** A GAS LINE IS REQUIRED INSIDE THE COUNTER FOR OPERATION FOR LP-GAS SETUP SEE NOTE AT RIGHT. IT IS RECOMMENDED THAT A FLEXIBLE HOSE IS USED FOR NG-GAS SETUPS TO EASE INSTALLATIONS.

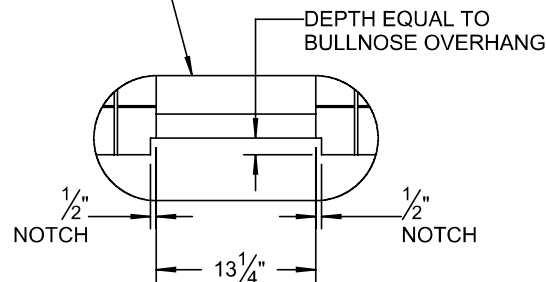


### LP GAS SETUP:



**NOTE:** STANDARD UNIT HAS A NATURAL GAS (NG) CONNECTION WITH 1/2" FPT FITTING.

IF LIQUID PROPANE (LP) OPTION IS ORDERED THE UNIT IS SUPPLIED WITH A REGULATOR, HOSE AND ADAPTER FITTING AS SHOWN.



## SPECIFICATIONS:

BTUH = 40,000  
 FUEL = NG @ 5" W.C. OR LP @ 10" W.C.  
 ELECTRICAL POWER = 9 VDC BATTERY  
 GAS CONNECTION = 1/2" NPT (NG) OR 3/8" ODF (LP)

**Alfresco**

THE INFORMATION CONTAINED IN THIS DRAWING IS THE SOLE PROPERTY OF SUPERIOR EQUIPMENT SOLUTIONS INC. ANY REPRODUCTION IN PART OR AS A WHOLE WITHOUT WRITTEN PERMISSION FROM SUPERIOR EQUIPMENT SOLUTIONS, INC. IS PROHIBITED.

**DRAWN BY:** ADRIAN CRISCI  
**CREATED:** 08/10/2015

**PROJECT TITLE:**

**AXESB-2**

**DRAWING NO.:** AXESB-2 SPEC SHEET

SHEET 1 OF 1

**DRAWING TITLE:**

**AXESB-2 SIDE BURNER SPECIFICATIONS**

SUPERIOR EQUIPMENT SOLUTIONS  
 7039 EAST SLAUSON AVENUE  
 COMMERCE, CA. 90040