



KM-520/660MRJZ

SLIM-LINE MODULAR CRESCENT CUBER



KM-520/660MRJZ
11/12/21
Item # 13624

W x D x H
22" x 27^{3/8}" x 28"

KM|EDGE
ICE MACHINE SERIES



Remote Air-Cooled

KM-520MRJZ ★

KM-660MRJZ ★



Item #: _____
Project: _____
Qty: _____
AIA#: _____

Features

- ▶ Individual crescent cube
- ▶ Factory-installed ultrasonic bin control can be adjusted on site
- ▶ Simple, one-hour cleaning process



- Durable construction with fewer parts
- Self-diagnostic programming automatically adjusts to changing conditions
- Snap fit parts for easy cleaning
- Stainless steel double-sided evaporator
- CycleSaver™ design
- Protected by H-GUARD Plus Antimicrobial Agent
- EverCheck™ alert system
- R-404A Refrigerant



Available on Bins/Dispensers:

B-250SF	B-500/SF	B-800SF	B-1150SS	DB-130H
B-300SF	B-700SF	B-900SF	B-1300SS	DB-200H
				DM-200B

Top kit may be required. See Bin Spec Sheets.

Warranty:

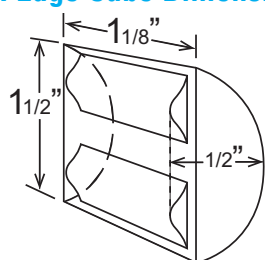
3 Year Parts & Labor on entire machine 5 Year Parts & Labor on evaporator
5 Year Parts on Compressor; air-cooled condenser coil
Valid in United States, Canada, Puerto Rico and U.S. Territories. Contact factory for warranty in other countries.

Shipping: (LxWxH) 33.5" x 25.88" X 34.6" Volume: 16.64ft³

Condenser	Model	ICE PRODUCTION		WATER USAGE		ELECTRICAL					Heat Rejection BTU/hr.	Refrigerant Charge Amount	Net / Ship Weight (lbs.)
		Air / Water Temp Lbs. per 24 hours 70° / 50°F 90° / 70°F		Potable Gal. per 100 lbs. 90° / 70°F	Condenser Gal. per 100 lbs. 90° / 70°F	kWh Used per 100 lbs. 90° / 70°F	Min. Circuit Amp - Max. Fuse/Breaker	Amperage	Voltage	Circuit Wires (including ground)			
Remote	KM-520MRJZ ★	547	495	13.6	N/A	4.80	20A	12.05A	115V/60/1	3	6,200	2 lb. 4.7 oz. 4 lb. 2.7 oz.†	145 / 175
Remote	KM-660MRJZ ★	646	602	14.7	N/A	5.60	20A	16.1A	115V/60/1	3	8,100	2 lb. 4.7 oz. 4 lb. 2.7 oz.†	150 / 180

† (with condenser)

KM Edge Cube Dimensions†



† approximate size in inches, image not to scale

Operating Limits

- Ambient Temp Range 45 - 100°F
- Water Temp Range 45 - 90°F
- Water Pressure 10 - 113 PSIG
- Voltage Range 104 - 127V

Service

- Panels easily removed and all components accessible for service.
- Removable/cleanable air filters. (Air-cooled model only)
- Allow 6" (15 cm) clearance at rear, sides, and top for proper air circulation and ease of maintenance/service.

Plumbing

- Ice maker water supply line: minimum 1/2" nominal ID copper water tubing or equivalent
- Ice maker drain line: minimum 3/4" nominal ID hard pipe or equivalent

Line Sets

- Line sizes for lengths up to 66': 1/4" LIQ and 3/8" DIS
- Line sizes for lengths greater than 66' to a maximum of 100': 3/8" LIQ and 1/2" DIS plus charge adjustment - add 16.5 oz. (468 g) of refrigerant to compensate for larger diameter line sizes and 0.4 oz. (11 g) for each foot over 66'.

Water Filter

Please refer to water filter specification sheet for recommendations.

Hoshizaki reserves the right to change specifications without notice.



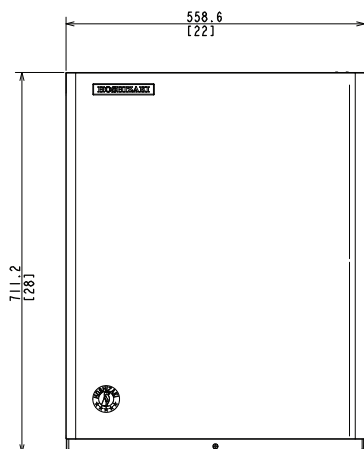
KM-520/660MRJZ

SLIM-LINE MODULAR CRESCENT CUBER



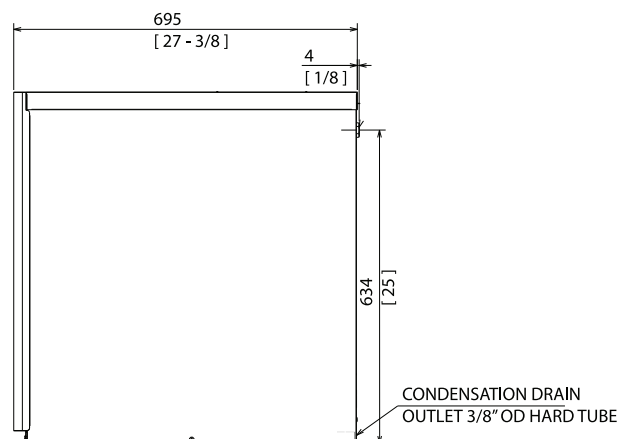
KM-520/660MRJZ
11/12/21
Item # 13624

FRONT VIEW

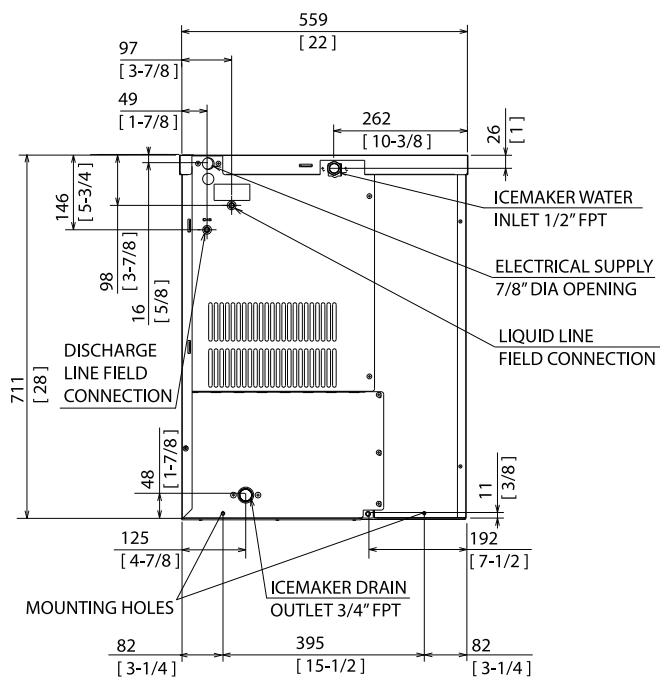


SIDE VIEW

Front
→



REAR VIEW



URC-5FZ Remote Condenser (Sold Separately)

(W x D x H) 21^{13/16} x 14^{1/16} x 32^{13/16}

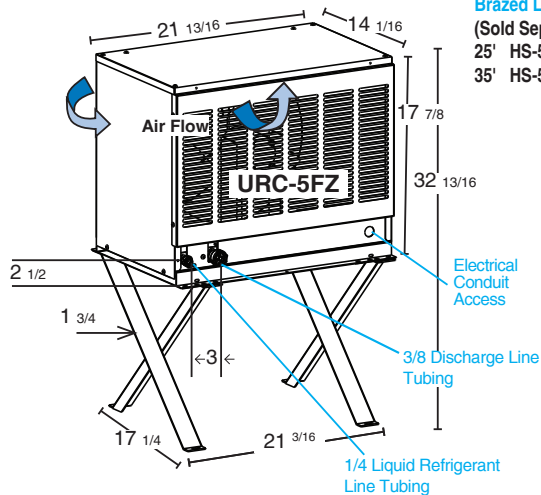
For Use with KM-520MRJZ and KM-660MRJZ

Brazed Line Sets

(Sold Separately)

25' HS-5587

35' HS-5588



Voltage supply for ice maker and condensing unit are separate.

BOTTOM VIEW

Front
→

