

BENCH by the INCH



CENTURY®

BENCH by the INCH



DxY
Designed by You

BENCH by the INCH | 33-3100 SERIES

Snap the QR Code to access our Visualizer

1 - SELECT WIDTH (up to 86")

The 33-3100 Series is available in widths from 18" to 86". Widths exceeding 48" receive a center leg.

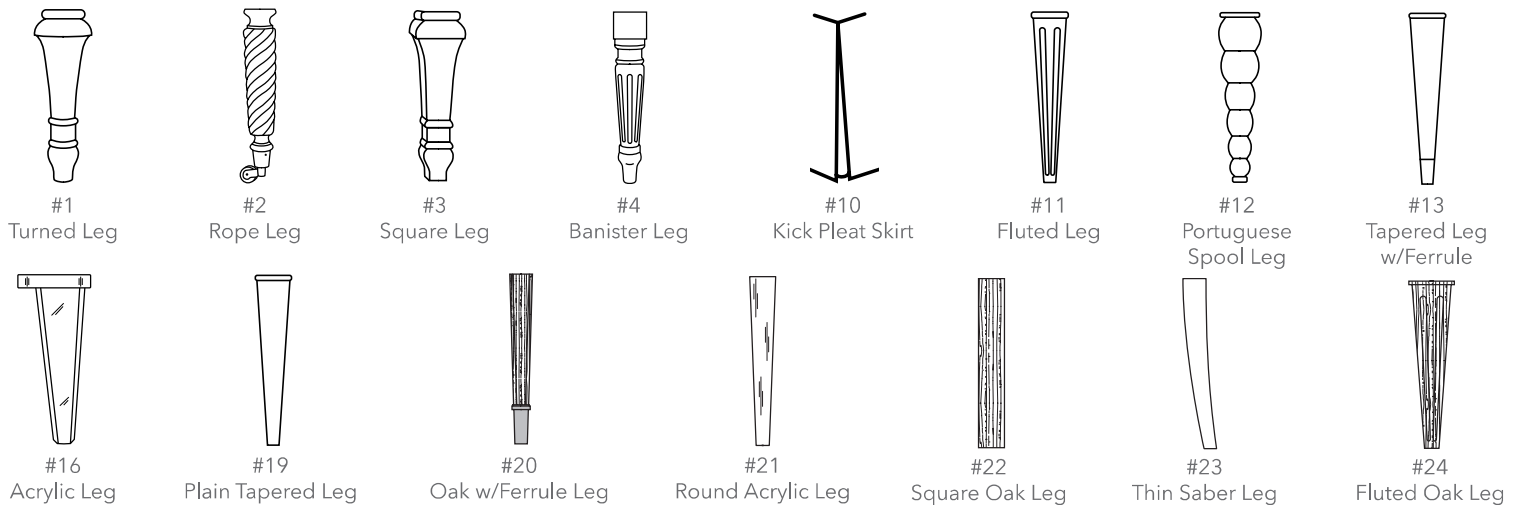


33-3101 Bench by the Inch Ottoman (Shown with Portuguese Spool Leg)
W 32 D 20 H 19

2 - SELECT DEPTH (up to 48")

The 33-3100 Series is available in depths from 18" to 48" in any combination.

3 - SELECT LEG OR SKIRT OPTION



- Finished height with #10 Skirt and Legs = 19"
- #2 Rope Leg - Omitting Casters decreases overall height by 1.5"
- #13 Tapered Leg available with Antique Brass or Brushed Nickel Ferrules
- #20 Oak w/ Ferrule available in Antique Brass Only
- #10 Skirt is Standard with Welt, Nails can be applied to Skirt above Welt - Upcharge
- #1 Nail (Smooth Brass) Standard with Antique Brass Ferrules/Casters
- #24 Nail (Brushed Nickel) Standard with Nickel Ferrules/Casters

4 - DETERMINING ITEM NUMBER AND PRICE

To determine the item number and price of your Bench by the Inch, add your desired width and depth. Refer to the Century Upholstery Price List and match the total with the number on the Pricing Column.

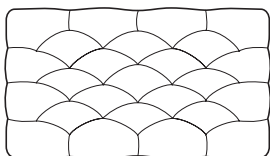
Example: W36" + D28" = 64" Total - 64" will fall under 33-3102 item number in the Pricing Column.



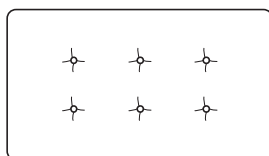
33-3100	33-3101	33-3102	33-3103	33-3104	33-3105	33-3106	33-3107	33-3108
36" to 46"	47" to 56"	57" to 66"	67" to 76"	77" to 86"	87" to 96"	97" to 106"	107" to 116"	117" to 134"

5 - SELECT TOP

Smooth Top is Standard. Tufted Top and Button Pull Top are available (Upcharge).



Tufted Top



Button Pull Top

6 - SELECT FABRIC, LEATHER, FINISH and NAILS

Visit centuryfurniture.com to see all available fabric, leather and nail finish options.