



**marantz®**

## **CD Receiver M-CR610**

Quick Setup Guide

**Start Here**

**Commencez ici**

**Iniciar aquí**



# Before you begin

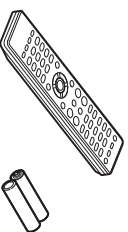
What's In The Box



M-CR610



Power cord



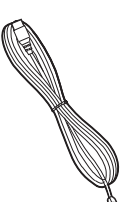
Remote and batteries



Product manual  
on CD-ROM

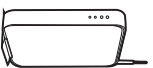


AM loop antenna

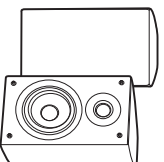


FM indoor  
antenna

Required For Setup



Network router

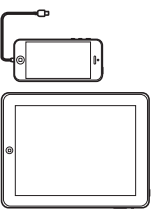


Speakers



Speaker cables

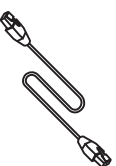
Optional



iOS device and  
USB cable



Router with WPS

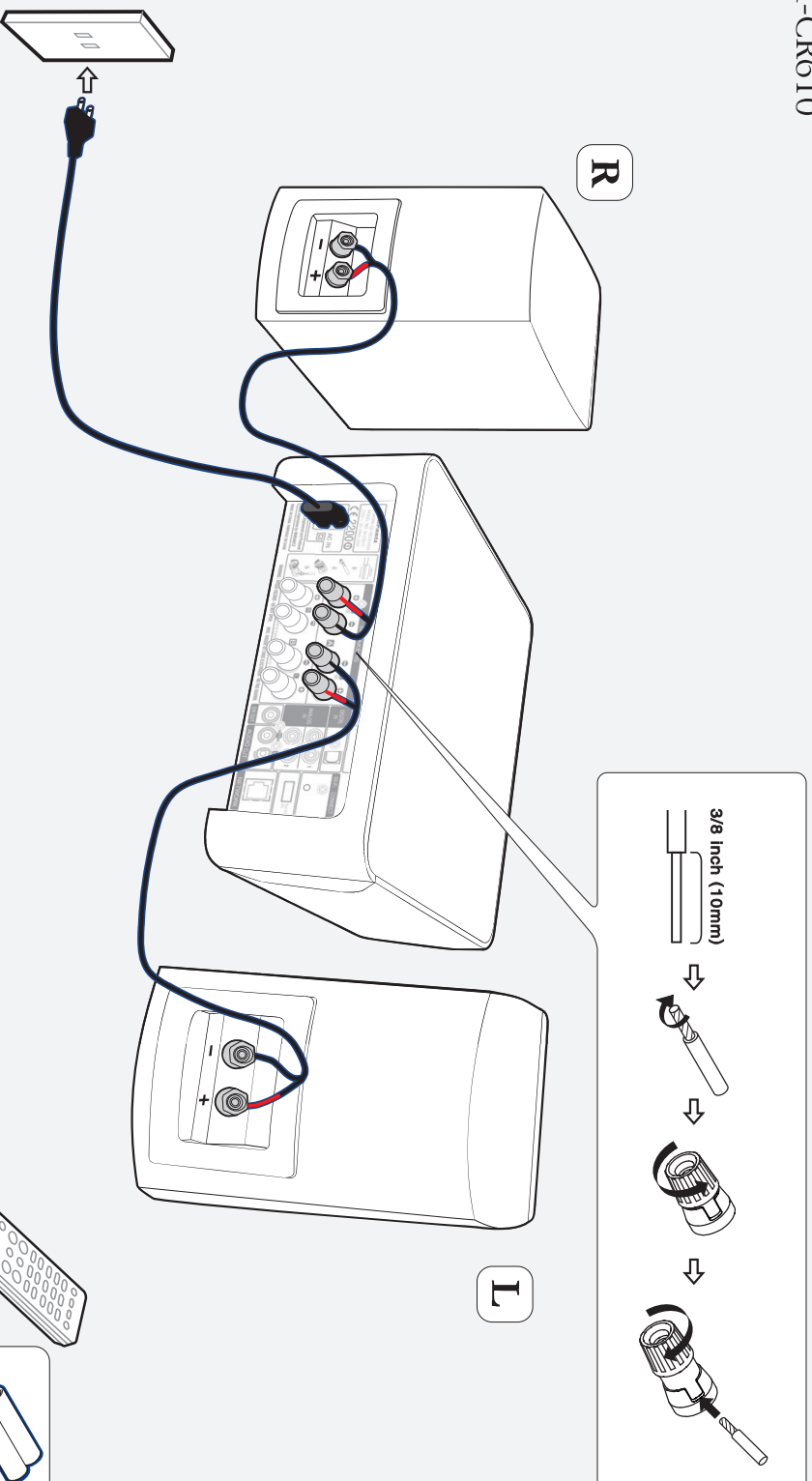


Network cable

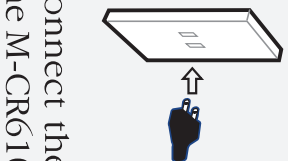
\* For detailed instructions or assistance, please refer to the enclosed CD-ROM manual or visit our support site: [www.marantz.com](http://www.marantz.com)

# 1. Connection

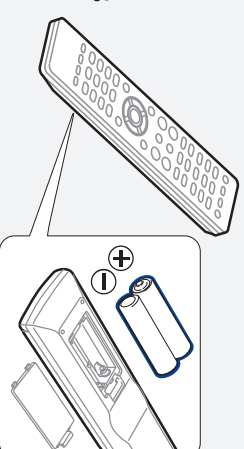
- 1** Connect the left and right speakers to the M-CR610



- 2** Connect the power cord from the M-CR610 to a power outlet



- 3** Insert the batteries into the remote



Note: Please refer to the CD-ROM manual for Speaker A/B and Bi-amp connection options.

## 2. Connecting to your home network

Choose from one of the following options

### iOS device + USB cable



- 1 Power on
- 2 Select language



- 3 Make sure your iOS device is already connected to your Wifi Network then connect your iOS device to the front using your USB cable.  
Note: You must be running iOS version 5 or later



### Wireless

#### No WPS router



- 1 Power on
- 2 Select language



- 3 Auto scan  
Please wait as your M-CR610 looks for available networks...



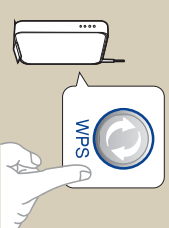
#### WPS router



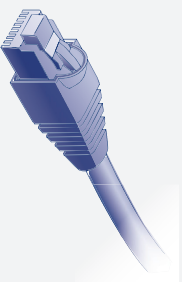
- 1 Power on
- 2 Select language



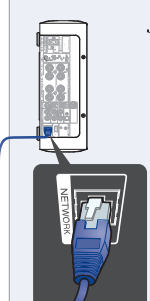
- 3 Press the WPS button on your router



### Wired



- 1 Connect a network cable between your M-CR610 and your router (cable not included)



- 2 Power on

## Network Control



Select Network Control ON to control M-CR610 from your smartphone, use Apple AirPlay® and maintain constant network access. Power Consumption during standby power will be slightly higher.



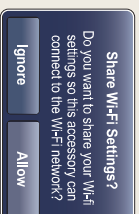
Select Network Control OFF to reduce power consumption during standby. You can not turn on your M-CR610 from your smartphone or use Apple AirPlay until your M-CR610 is powered on manually and connects to your network.

Setup Complete!

**4** Press the red Wi-Fi CONNECT Button on the back of your M-CR610



**5** This message will appear on your iOS device  
Select "Allow"

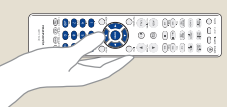


Connected!

**4** Select your network name  
If your network name is not listed, select "Rescan"

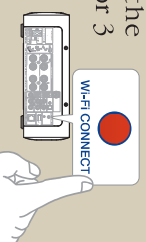


**5** Enter your network password using the number keys on the remote control



Connected!

**4** Within 2 minutes, Press and Hold the red Wi-Fi CONNECT button on the back of your M-CR610 for 3 seconds



**5** Please wait as completing the connection can take a few minutes  
The front panel of the M-CR610 will show the status of the connection

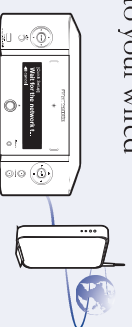


Connected!

**3** Select language



**4** Please wait while your M-CR610 connects to your wired network.

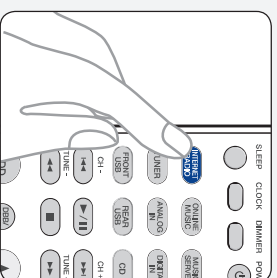


Connected!

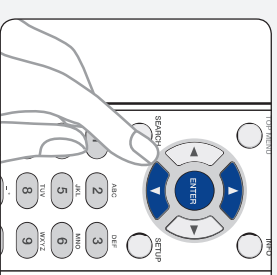
### 3. Enjoying your music!

#### Enjoying Internet radio

- 1 Press the “INTERNET RADIO” button on the remote

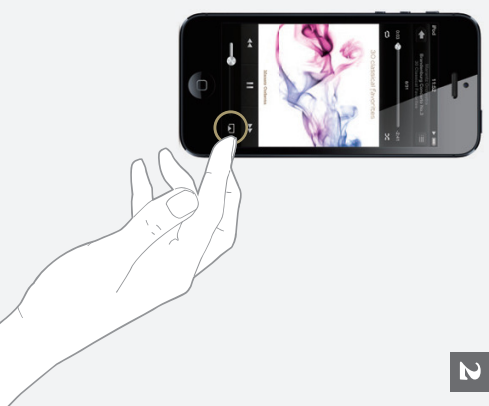


- 2 Select a station



#### Enjoying music using Apple AirPlay

- 1 Tap the AirPlay Icon from within any app that supports AirPlay



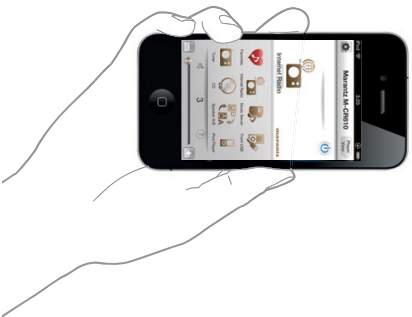
- 2 Select the “Marantz M-CR610” from the AirPlay Device list



Note: Make sure your iOS device is on the same network as the M-CR610

## Download the Marantz Remote App

Scan the QR code to download and install the Marantz Remote App using your smartphone and a scanning app or manually search the Apple App store or Google Play store for the “Marantz Remote App”



**[www.marantz.com](http://www.marantz.com)**

You can find your nearest authorized distributor or dealer on our website.

**marantz**<sup>®</sup> is a registered trademark.