

BLOCKADE INSWING Vault Door by Liberty Safe

Shown: Left Hand Inswing

Optional Bolt-In Installation:

- 1. Simply knock out at least two of the four knock-outs on each side.
- 2. Install anchor through the knock-out.

4 Piece Clamshell Design

Front

Back

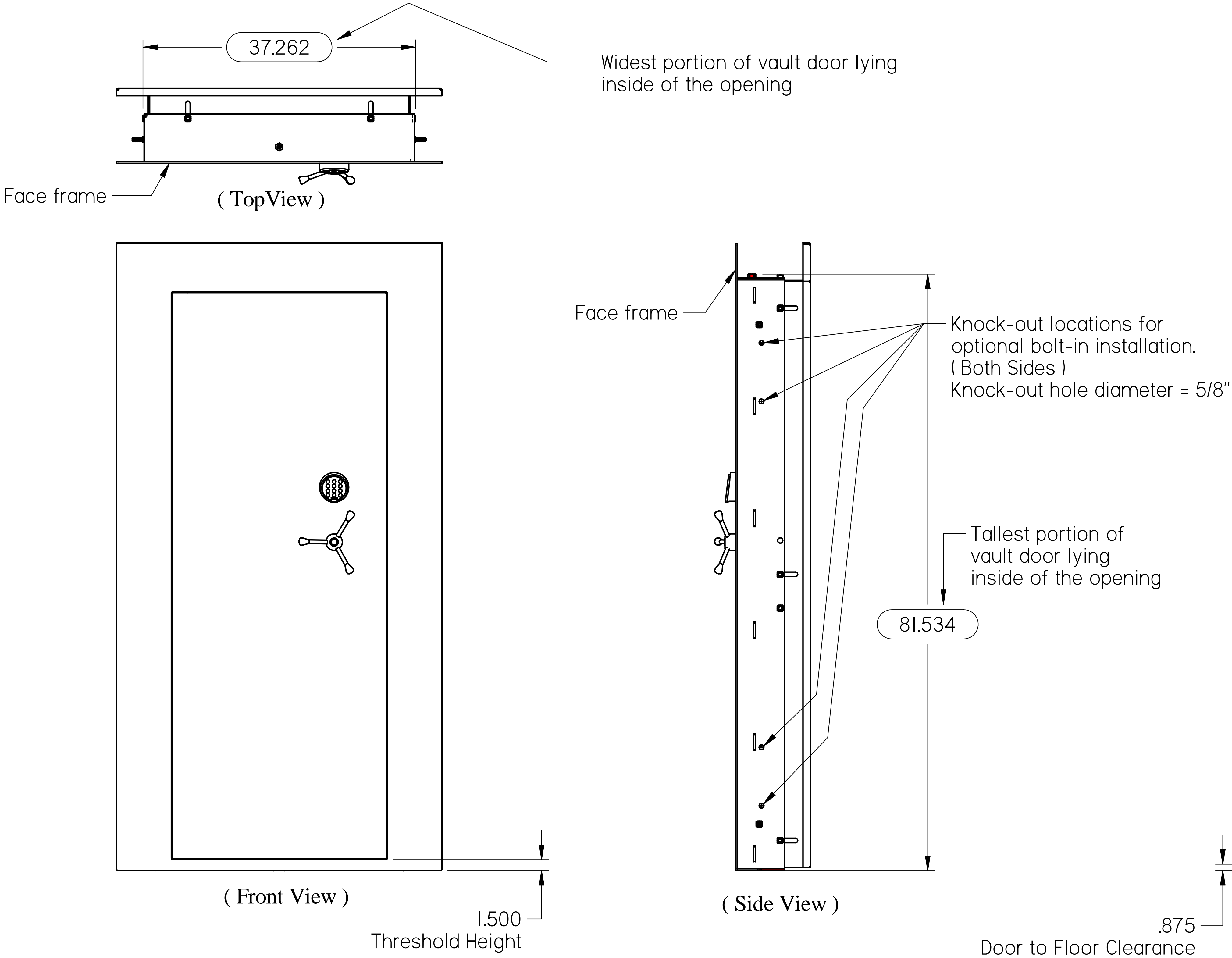
Back



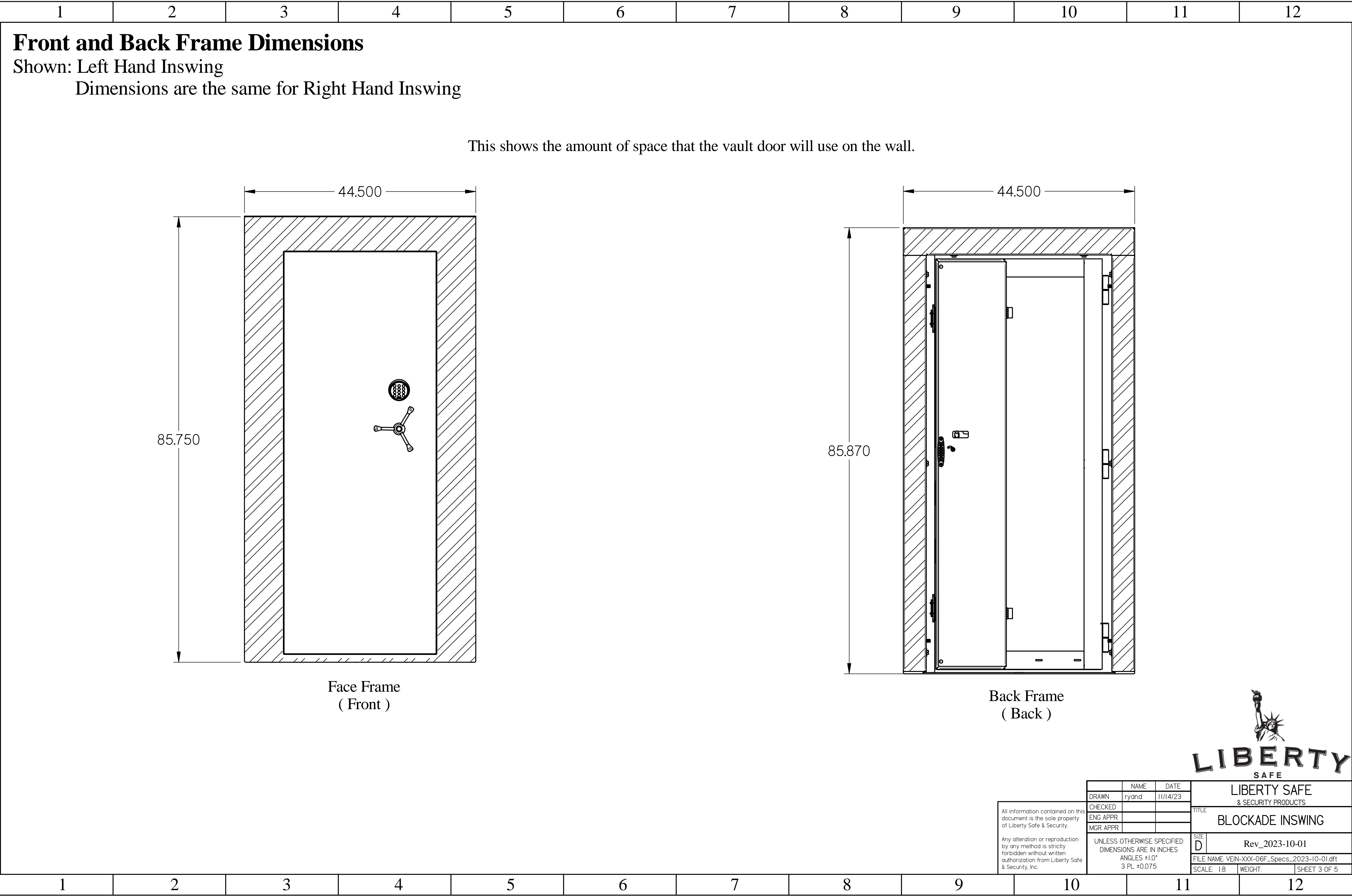
All information contained on this document is the sole property of Liberty Safe & Security. Any alteration or reproduction by any method is strictly forbidden without written authorization from Liberty Safe & Security, Inc.		NAME	DATE	LIBERTY SAFE & SECURITY PRODUCTS			
	DRAWN	ryand	11/14/23				
	CHECKED			BLOCKADE INSWING			
	ENG APPR						
	MGR APPR						
		UNLESS OTHERWISE SPECIFIED DIMENSIONS ARE IN INCHES ANGLES ±1.0° 3 PL ±0.075		SIZE D	Rev_2023-10-01		
				FILE NAME: VEIN-XXX-06F_Specs_2023-10-01.dft			
				SCALE: 1:8		WEIGHT:	SHEET 1 OF 5

Clearances

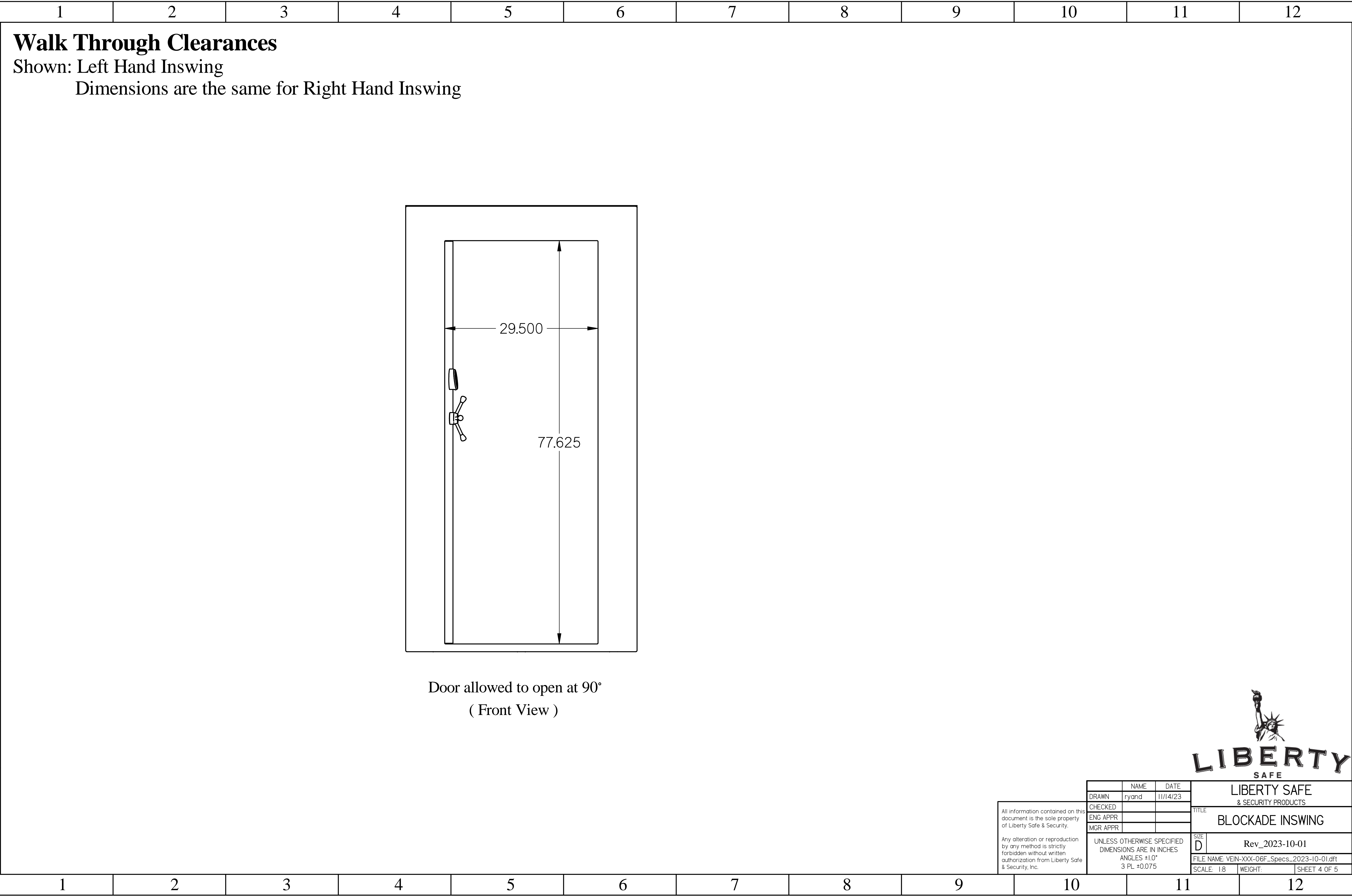
Shown: Left Hand Inswing
Clearances are the same for Right Hand Inswing



All information contained on this document is the sole property of Liberty Safe & Security. Any alteration or reproduction by any method is strictly forbidden without written authorization from Liberty Safe & Security, Inc.		NAME	DATE	LIBERTY SAFE & SECURITY PRODUCTS		
	DRAWN	ryand	11/14/23	TITLE BLOCKADE INSWING		
	CHECKED					
	ENG APPR					
	MGR APPR					
UNLESS OTHERWISE SPECIFIED DIMENSIONS ARE IN INCHES ANGLES ±1.0° 3 PL ±0.075				SIZE: D	Rev_2023-10-01	
				FILE NAME: VEIN-XXX-06F_Specs_2023-10-01.dft		
				SCALE: 1:8		SHEET 2 OF 5



All information contained on this document is the sole property of Liberty Safe & Security.		NAME	DATE	LIBERTY SAFE & SECURITY PRODUCTS			
	DRAWN	ryand	11/14/23				
	CHECKED			TITLE BLOCKADE INSWING			
	ENG APPR						
MGR APPR							
Any alteration or reproduction by any method is strictly forbidden without written authorization from Liberty Safe & Security, Inc.	UNLESS OTHERWISE SPECIFIED DIMENSIONS ARE IN INCHES ANGLES ±1.0° 3 PL ±0.075			SIZE	D		Rev_2023-10-01
				FILE NAME: VEIN-XXX-06F_Specs_2023-10-01.dft			
				SCALE: 1:8		WEIGHT:	SHEET 3 OF 5

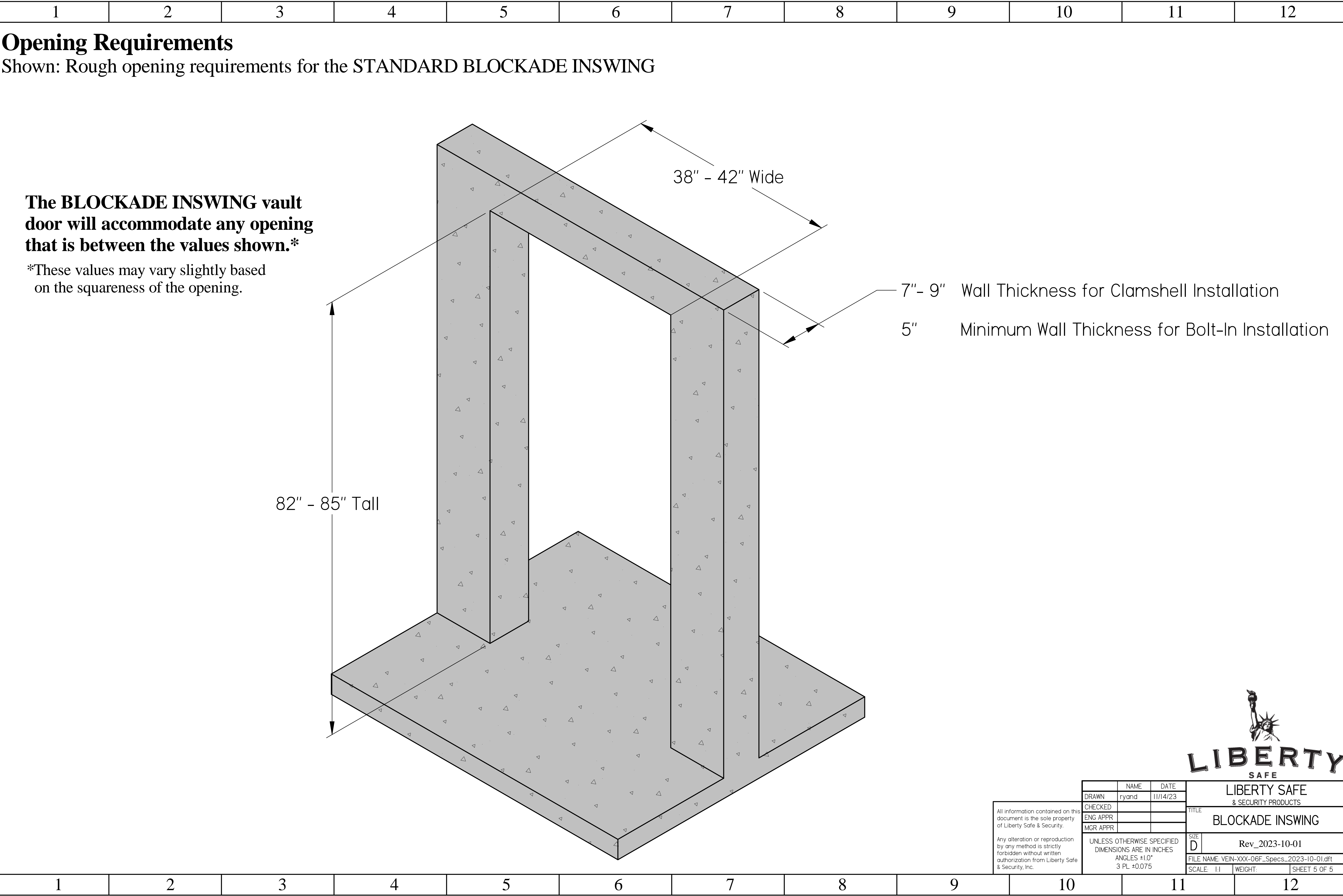


Walk Through Clearances

Shown: Left Hand Inswing
Dimensions are the same for Right Hand Inswing



All information contained on this document is the sole property of Liberty Safe & Security.		NAME	DATE	LIBERTY SAFE & SECURITY PRODUCTS		
	DRAWN	ryand	11/14/23			
	CHECKED			TITLE BLOCKADE INSWING		
	ENG APPR					
	MGR APPR			SIZE D Rev_2023-10-01		
Any alteration or reproduction by any method is strictly forbidden without written authorization from Liberty Safe & Security, Inc.	UNLESS OTHERWISE SPECIFIED DIMENSIONS ARE IN INCHES ANGLES ±1.0° 3 PL ±0.075			FILE NAME: VEIN-XXX-06F_Specs_2023-10-01.dft		
				SCALE: 1:8	WEIGHT:	SHEET 4 OF 5



Opening Requirements

Shown: Rough opening requirements for the STANDARD BLOCKADE INSWING

The **BLOCKADE INSWING** vault door will accommodate any opening that is between the values shown.*

*These values may vary slightly based on the squareness of the opening.

7"- 9" Wall Thickness for Clamshell Installation
5" Minimum Wall Thickness for Bolt-In Installation



All information contained on this document is the sole property of Liberty Safe & Security.		NAME	DATE	LIBERTY SAFE & SECURITY PRODUCTS		
	DRAWN	ryand	11/14/23			
	CHECKED			TITLE BLOCKADE INSWING		
	ENG APPR					
MGR APPR						
Any alteration or reproduction by any method is strictly forbidden without written authorization from Liberty Safe & Security, Inc.	UNLESS OTHERWISE SPECIFIED DIMENSIONS ARE IN INCHES ANGLES ±1.0° 3 PL ±0.075			SIZE	Rev_2023-10-01	
				D		
				FILE NAME: VEIN-XXX-06F_Specs_2023-10-01.dft		
			SCALE: 1:1		WEIGHT:	SHEET 5 OF 5