

MDE/MDG25PD

MAYTAG® COMMERCIAL
SUPER-CAPACITY DRYER



LEGENDARY MAYTAG DEPENDABILITY

Maximizing your equipment investment for over a half century.



MICROPROCESSOR CONTROLS, COIN-DROP

Maytag® Computer Trac® controls are easy to program and operate. Plus, they give owners the flexibility to set vend prices by day and time.

FOR YOUR CUSTOMERS:

- Extra-Large 6.7 cu. ft. (190 liters) Capacity
- Easy-To-Use One-Touch Cycle Selection
- High Airflow For Better Clothes Care
- Time Remaining Display
- Large Window For Convenience
- ADA-Compliant Without Optional Pedestal

FOR YOUR OPERATION:

- TurboVent™ Dryer Technology—Better Performance On Long Vents
- Advanced Computer Trac® Controls Allow For Easy Programming
- Front Access For Easier Self Service
- Accu Trac® Audit System With Two-Way Data Communication
- Large-Capacity Metal Mesh Lint Filter
- Card Reader Compatible
- Dual Coin-Drop Option
- Reversible Side-Swing Door

BUILT-TO-LAST™ FEATURES:

- Porcelain-Enamel Top With Backsplash
- Four-Roller Suspension With Permanently Lubricated Bearings
- Blower Guard Reduces Service Calls
- High-Security Vault
- 5-Year Limited Warranty—All Parts Covered



LAUNDRY SOLUTIONS
YOU CAN **DEPEND** ON.

FASTER DRYING WITH
TURBOVENT™ DRYER TECHNOLOGY

visit maytagcommerciallaundry.com
or call 800-662-3587



OUR COMMITMENT TO DEPENDABLE QUALITY

At Maytag, we believe durable goods should remain just that. That's why every Maytag® product is constructed of the highest-quality materials and with the utmost in precision craftsmanship. It's also why we stand behind our equipment with solid service and support from our professional Maytag laundry suppliers. Simply put, when you choose Maytag® products, you ensure your peace of mind.



MDE/MDG25PD MAYTAG® COMMERCIAL SUPER-CAPACITY DRYER

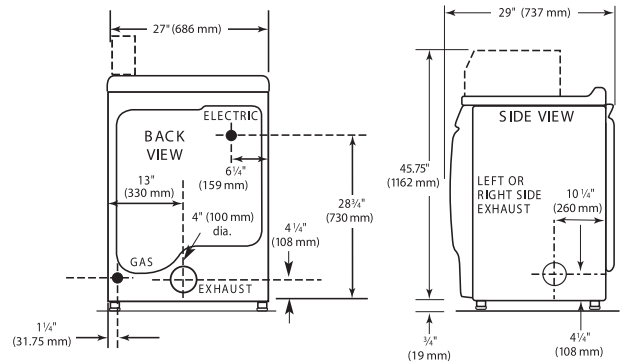
Maytag® Commercial Super-Capacity Dryer

MICROPROCESSOR CONTROLS, COIN-DROP

DRYER SPECIFICATIONS	
MODEL	MDE/MDG25PD
MOTOR	
Single-phase, thermoprotected against overload, auto-reset	Yes
HP (kw)	$\frac{1}{3}$ (.25)
Tumble speed—RPM	50 ± 1
CAPACITY	
Cu. ft. (liters)	6.7 (190)
DOOR OPENING DIAMETER	
Sq. in.	191
AIRFLOW	
Gas models—cfm (cmm)	230 (6.5)
Electric models—cfm (cmm)	215 (6.1)
SOUND LEVEL (export model only)	
Sound pressure level, Lpa (dbA) (Kpa: +/- 10dbA)	58
ELECTRICAL REQUIREMENTS	
MDE model—voltage	240V/60Hz
MDG model—voltage	120V/60Hz
Export models—voltage	220–240V/50Hz
BREAKER/FUSE MIN. REQUIREMENTS	
MDE model—amps	30
MDG model—amps	15
MDE export model—amps	20
MDG export model—amps	10
ELECTRIC HEATING ELEMENT	
Domestic models—watts	5,600
Export models—watts	4,600
Canadian models—watts	5,250
GAS RATING	
MDG model—BTU/hr. (kcal/hr.)	24,000 (6,048)
MDG export model—BTU/hr. (kcal/hr.)	20,000 (5,040)
EXHAUST DUCT DIAMETER—IN. (MM)	4 (100)**
ELECTRONIC BURNER IGNITION	
MDG model	Yes
GAS INLET	
MDG model—in.	$\frac{3}{8}$ N.P.T.
ADJUSTABLE LEVELING LEGS	Yes
APPROXIMATE WEIGHT	
Crated—lbs. (kg) electric/gas	160 (73)/113 (74)
Uncrated—lbs. (kg) electric/gas	147 (67)/150 (68)
DIMENSIONS	
Width—in. (mm)	27 (686)
Depth—in. (mm)	29 (737)
Height—in. (mm)	45.75 (1162)*
OPTIONAL PEDESTAL ADDS:	
Height—in. (mm)	2.75 (70)

* Includes height of metercase.

** Use 4" (100 mm) diameter rigid aluminum or galvanized steel duct. Never use plastic, nonmetal or combustible duct. See specific instructions for proper installation. Because of continuous product improvement, Maytag reserves the right to change specifications without notice. Export model ships without coin-drop mechanism.



MAXIMUM EXHAUST DUCT LENGTH PER NUMBER OF TURNS

Number Of 90° Turns	Rigid Metal Vent	
	Box Hood and Louvered Style	Angled Hood Style
0	135 ft. (41.2 m)	129 ft. (39.3 m)
1	125 ft. (38.1 m)	119 ft. (36.3 m)
2	115 ft. (35.1 m)	109 ft. (33.2 m)
3	106 ft. (32.3 m)	100 ft. (30.5 m)
4	98 ft. (29.9 m)	92 ft. (28.0 m)

Number Of 90° Turns	Flexible Metal Vent	
	Box Hood and Louvered Style	Angled Hood Style
0	76 ft. (23.2 m)	62 ft. (18.9 m)
1	71 ft. (21.6 m)	57 ft. (17.4 m)
2	67 ft. (20.4 m)	53 ft. (16.2 m)
3	65 ft. (19.8 m)	51 ft. (15.6 m)
4	63 ft. (19.2 m)	49 ft. (14.9 m)



NEW YORK CITY
M.E.A.



BEAB
Approved



5-YEAR LIMITED WARRANTY ALL PARTS COVERED

For a period from the date of original purchase through the time listed above, the designated parts that fail in normal commercial use will be repaired or replaced free of charge for the part itself, with the owner paying all other costs, including labor, transportation and customs duty. Chemical damage is excluded from all warranty coverage. See complete warranty for details.