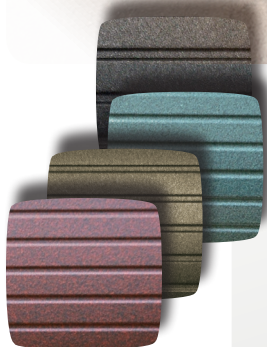


129AT70 AT SERIES BI-AMP - MEDIUM-LARGE LANDSCAPE SYSTEM

(8) 4" SATS, (1) 12" SUBWOOFER, (1) JAMES M1000, (1) GXD8 AMP - UP TO 2000 SQ. FT



Satellites (8) 42AT70
 Subwoofer (1) 121ST70
 Amplifier (1) GXD8
 Sub Amplifier (1) M1000
 Stakes (8) AT.STK.12
 Freq Response 22Hz-20kHz±3dB
 Impedance 70 volt Transformer
 Sensitivity 91dB 2.83V/1m
 Finishes Sats - Black Wrinkle, Bronze Wrinkle, Verde, Weathered Iron, Premium Finishes and Plating Available

Our upper-tier landscape system was packaged with the end user in mind, providing ample coverage for medium to large areas while also providing each of those areas with uncompromising audio performance and minimal visual impact.

By bi-amping the system and incorporating the DSP processor, it allows more flexibility than ever before experienced in an outdoor audio system. We carefully measure and program each of these systems before they ever leave our facility, taking the guess work out of your installation.

Our new 42AT70 landscape speakers now feature a coaxially mounted .75" aluminum dome tweeter design over a proprietary high-excursion 4" woofer, with a built in crossover network and 50W/70V low distortion transformers. These outdoor speakers play at significantly higher volumes while still maintaining a smooth frequency response of 80-20kHz.

The 121ST70 landscape subwoofer was designed to provide larger coverage for systems that needed extra SPL. It features a proprietary high excursion 12" aluminum driver mounted within a fully sealed aluminum band-pass enclosure.

Engineered for direct burial placement, the compression design creates unrivaled low end frequency response, and nearly complete invisibility. You can install up to (4) of these subwoofers on a single run of speaker wire when paired with our M1000 DSP amplifier!

See individual datasheets for speaker details and color options.



535 Airpark Road, Napa, CA 94558
 Ph: 707.265.6343
www.jamesloudspeaker.com

AUDIOPHILE OUTDOOR EXPERIENCE

20170214