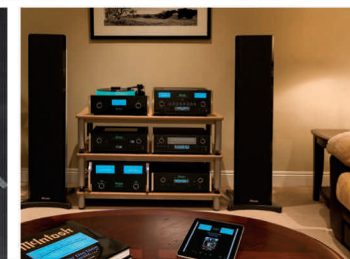
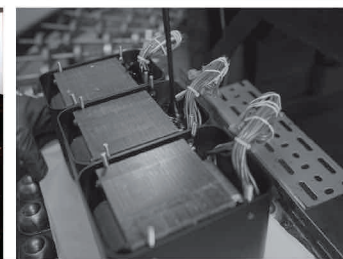


# LCR80 loudspeaker system

- Amazingly full-sounding for a speaker of such compact dimensions, the LCR80 projects an extremely wide sound-stage for a greater listening experience from a wide variety of seating positions.
- Sonically voiced to match the McIntosh XR50 and XR100 loudspeakers, LCR80s can also be used as Left, Center and Right channel in home theater systems, or combined with a subwoofer for two-channel music systems.
- The machined alloy high-frequency array is rotatable to optimize the sound for either vertical or horizontal placement without sonic compromise. McIntosh patented, Low Distortion High Performance (LD/HP) woofers are combined with an array of two midrange/tweeters and a dedicated super tweeter.
- Wall mounting hardware is included, and allows up to 30 degrees of rotation when needed.
- When adequately powered, the LCR80 will bring you closer than ever to a live musical event in your home, while taking up less of your valuable space.
- Available in Gloss Black, Red Walnut, and Pear Maple, the LCR80's high-gloss finishes and fine cabinetry will be a welcome addition to even the most elegantly furnished homes.



Flexible and accomplished.

**McIntosh®**

LEGENDARY PERFORMANCE™

[www.mcintoshlabs.com](http://www.mcintoshlabs.com)

# LCR80 loudspeaker system

## General Specifications

### System Type:

Three-way sealed, flexible placement

### Nominal Impedance:

8 Ohms

### Power Handling:

300 Watts

### Woofers:

Two 6" . LD/HP, Poly Cone,  
Cast Frame

### Midrange/Tweeters:

Two 2" , Inverted Titanium Domes

### Super Tweeter:

One ¾", Titanium Dome

### Anechoic Response:

80 Hz to 45 kHz Sensitivity

### One Watt, One Meter:

81 dB

### Crossover Frequencies:

500 Hz and 8 kHz

### Dimensions:

8" H, 24" W, 6" D

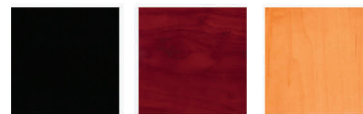
### Weight:

24lbs. (10.9Kg) net,  
30lbs. in shipping carton



### Finishes:

Available in three exclusive McIntosh finishes:



Gloss Black

Red Walnut

Pear Maple

### For the Consumer's Protection:

In order to ensure the highest level of customer satisfaction, "new" McIntosh products may only be purchased over-the-counter or delivered and installed by an Authorized McIntosh Dealer. McIntosh products that are purchased over the Internet, by phone or mail order are presumed to be "used" and do not qualify for any McIntosh Warranty. McIntosh does not warrant, in any way, products that are purchased from anyone who is not an Authorized Dealer or products that have had their serial number altered or defaced.



To experience the legendary performance of McIntosh, please call on us at 1.800.538.6576.

# McIntosh®

LEGENDARY PERFORMANCE™

[www.mcintoshlabs.com](http://www.mcintoshlabs.com)