

Hilight

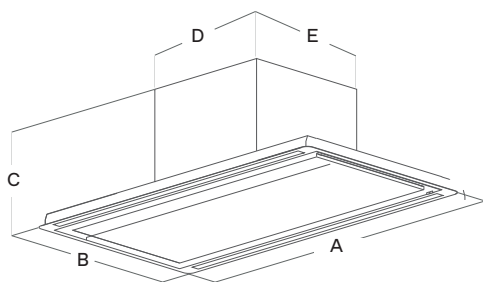
Ceiling hood

Specification sheet

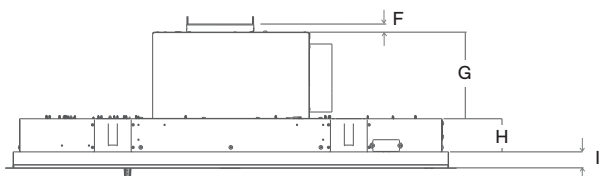


Learn more

MEASUREMENTS



FALSE CEILING CUT: 21 15/16" x 38 1/2"
*Can be installed up to 10 ft.



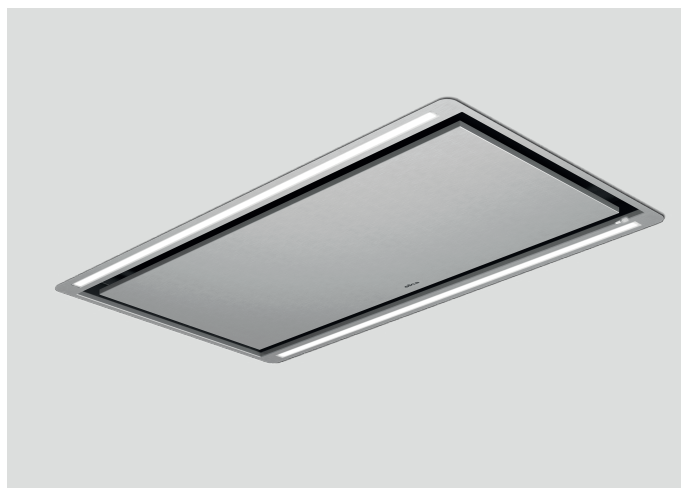
	EHL640WH EHL640SS
A	40" (101 cm)
B	22 7/16" (57 cm)
C	11 3/16" (30 cm)
D	13" (33 cm)
E	15 3/8" (39 cm)
F	3/4" (1.9 cm)
G	7 9/16" (19 cm)
H	2 7/8" (7.3 cm)
I	1 3/8" (3.4 cm)

DESCRIPTION

Characterized by essential lines, Hilight totally fits the kitchen architectural style with a perfectly flush installation, leaving the space above the cooktop completely free and without view obstructions.

Comfort in the kitchen is guaranteed by the powerful and silent suction heart concealed in the ceiling combined with the adaptable light intensity that create the right environment in every moment.

All maintenance operations can be carried on by opening the side panel without any effort and this way, the hood can be easily preserved clean and fully functional.



FEATURES

- 📶 Remote control
- 🕒 Long life filter
- 🔌 Total integration
- ⚙️ Tune white
- 🌀 Perimeter aspiration
- 💡 Dim light
- 👉 Super easy installation



GENERAL PROPERTIES

Width	40"	40"
Model	EHL640WH	EHL640SS
Dimensions	40"W x 22"D 11 ³ / ₁₆ " H	
Blower Type ¹ (Internal)	600 CFM (3-speed+ boost)	
Noise (Min-max sones) ¹	1.8-6.8 Sones	
Electrical	120V-60Hz, 578W	
Illumination	Strip LED, 14W	
Finish	White glass panel + metal white frame	Stainless steel panel + stainless steel frame
Controls (Included)	White remote control	
Grease filters	Dishwasher-safe, anodized aluminum, mesh filter + perimeter aspiration	
Duct transition	Round 6" (multi directional)	
Installation type	Ducted or recirculation (kit sold separately)	
Installation height	Can reach ceiling heights up to 10'	

KITS

Recirculating	KIT0167875 (Contains 3 long life carbon filters)
Optional remote control	KIT0121469 (Black) / KIT0121468 (White)

WARRANTY:² Two (2) Years Parts & In-Home Labor. Earn an additional One (1) Year of Parts & In-Home Labor by registering on elica.com



The product images shown are for illustration purposes only and may not be an exact representation of the product.
¹ CFM and Noise data indicate the performance of the hood blower tested according to international standards. For AHAM Certified Ratings, established in accordance with California Title 24 Standardized test procedure, please refer to AHAM Certified Product Directory. Electric Ratings are declared according to UL.

² For valid warranty extension, register within 3 months from purchase. For USA & Canada Users Only.