

# ASSEMBLY INSTRUCTIONS COASTER FINE FURNITURE



*Fine Furniture for every stage of life*

**224304**  
**Mirror**

# ITEM: 224304



## ASSEMBLY INSTRUCTIONS

### ASSEMBLY TIPS:

1. Remove hardware from box and sort by size.
2. Please check to see that all hardware and parts are present prior to start of assembly.
3. Please follow attached instructions in the same sequence as numbered to assure fast & easy assembly.



### WARNING!

1. Don't attempt to repair or modify parts that are broken or defective. Please contact the store immediately.
2. This product is for home use only and not intended for commercial establishments.

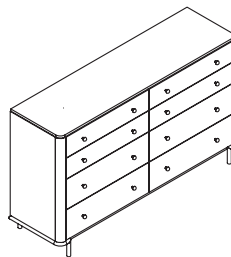


ASSEMBLY TIME

15 MINUTES

## PART IDENTIFICATION

- A DRESSER  
\*FROM BOX ITEM 224303\*



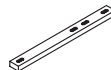
1PC

- B MIRROR



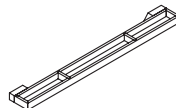
1PC

- C MIRROR SUPPORT  
(PACKED WITH MIRROR)



1PC

- D JEWELRY TRAY  
(PACKED WITH MIRROR)



1PC

## HARDWARE IDENTIFICATION

- 1 METAL CONNECTOR  
(2.5 x 65 x 65mm - BLK)



2PCS

- 2 SHORT BOLT  
(M6 x 22mm - BLK)



4PCS

- 3 LONG BOLT  
(M6 x 45mm - BLK)



8PCS

- 4 LOCK WASHER  
(1.6 x 14mm - BLK)



8PCS

- 5 FLAT WASHER  
(1 x 18mm - BLK)



8PCS

- 6 ALLEN WRENCH  
(M4 x 65mm - BLK)

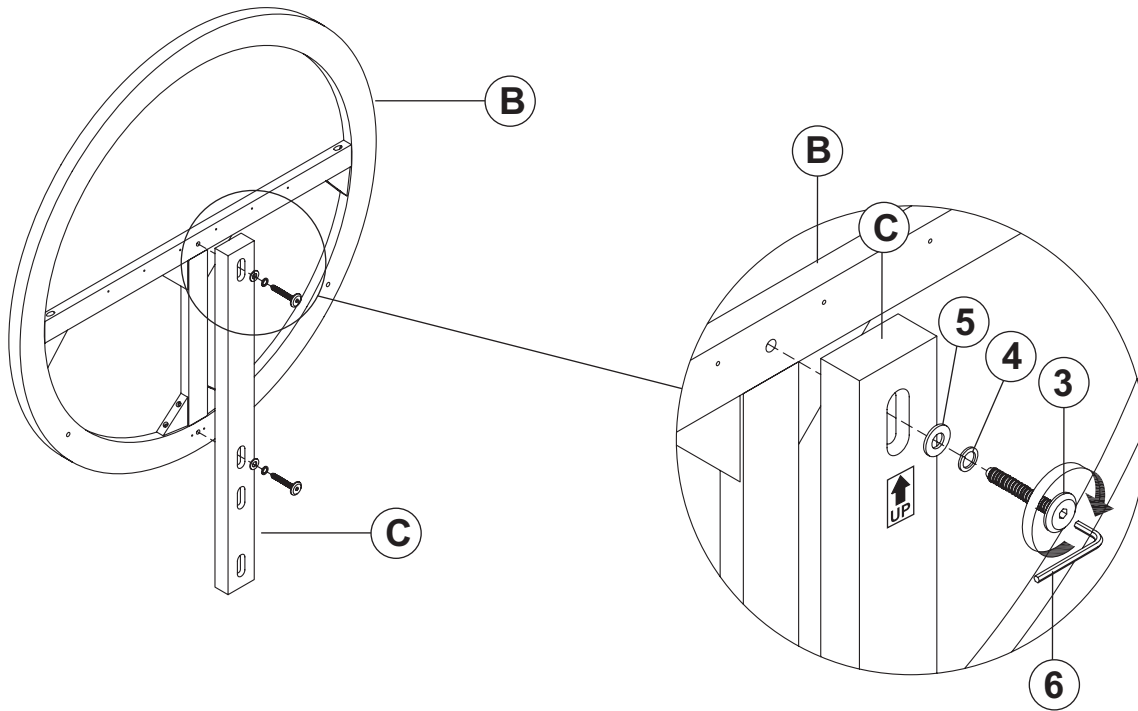


1PC

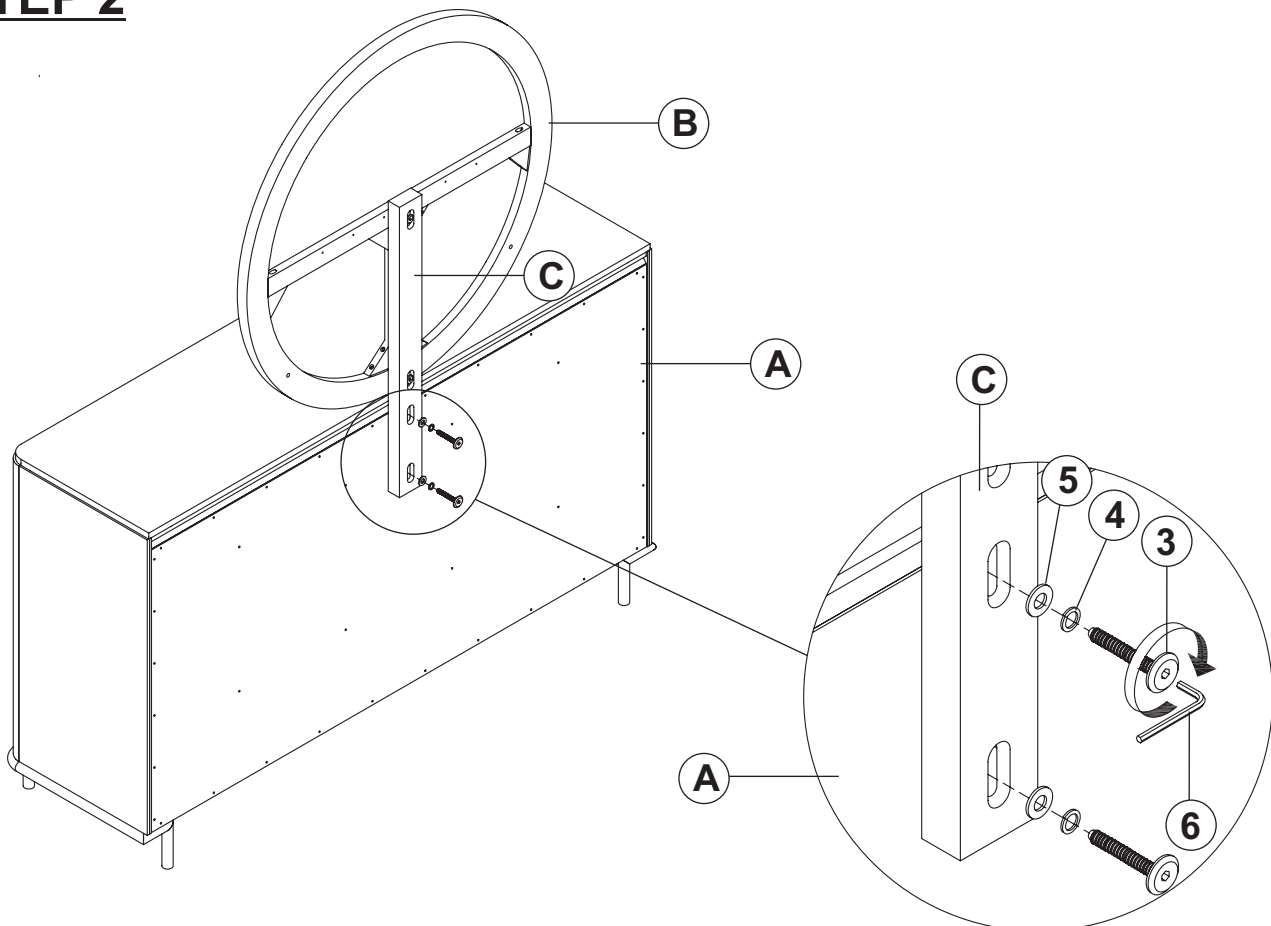
ITEM: **224304**

## ASSEMBLY INSTRUCTIONS

### STEP 1



### STEP 2

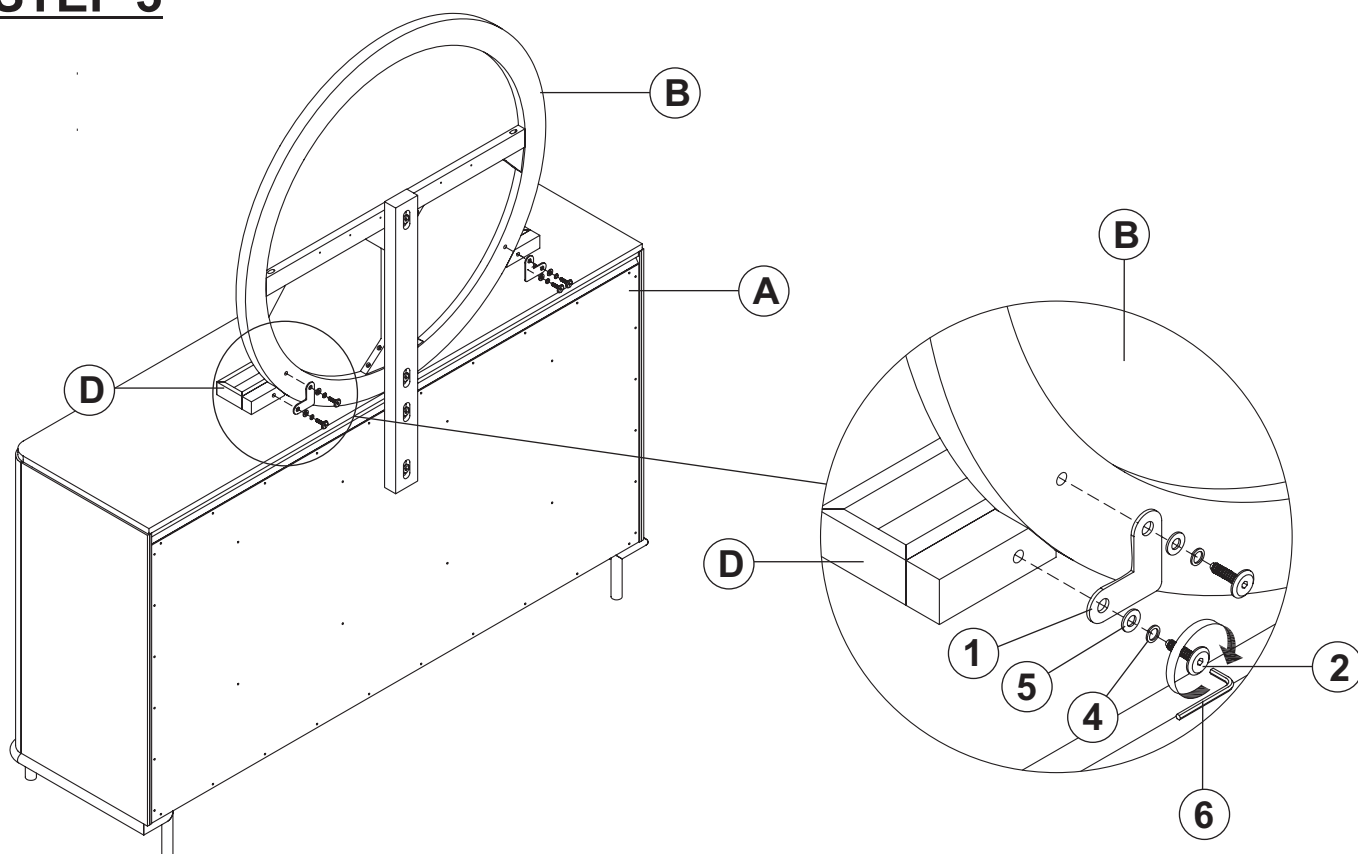


ITEM: **224304**

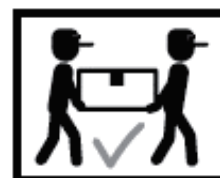
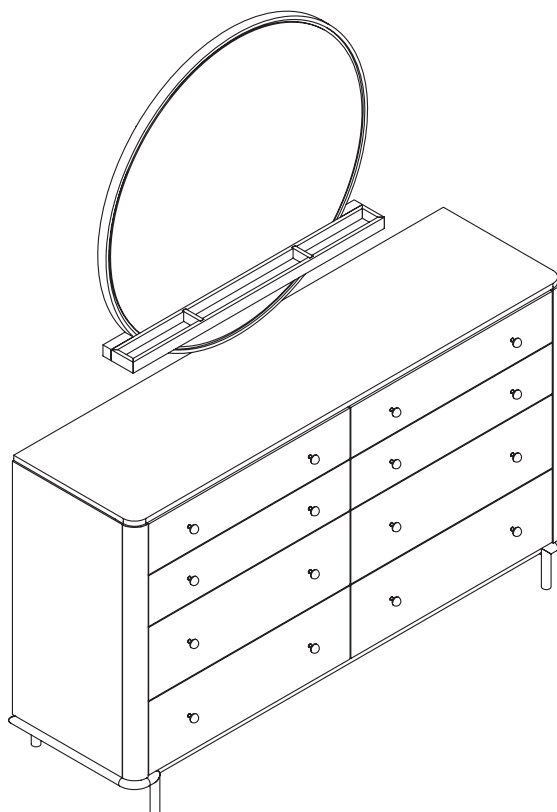
## ASSEMBLY INSTRUCTIONS



### STEP 3



### STEP 4 COMPLETE



**ASSEMBLY INSTRUCTIONS**

**ASSEMBLY TIPS:**

- 1. Remove hardware from box and sort by size.
- 2. Please check to see that all hardware and parts are present prior to start of assembly.
- 3. Please follow attached instructions in the same sequence as numbered to assure fast & easy assembly.



**WARNING!**


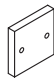
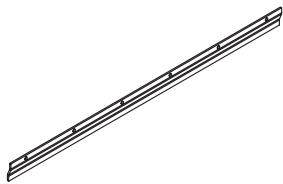
- 1. Don't attempt to repair or modify parts that are broken or defective. Please contact the store immediately.
- 2. This product is for home use only and not intended for commercial establishments.





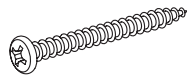
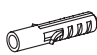
ASSEMBLY TIME

15 MINUTES

**PART IDENTIFICATION**

B	MIRROR		1 PC
E	SHORT HANGING BAR ( PACKED WITH MIRROR )		1 PC
F	LONG HANGING BAR ( PACKED WITH MIRROR )		2 PCS

**HARDWARE IDENTIFICATION**

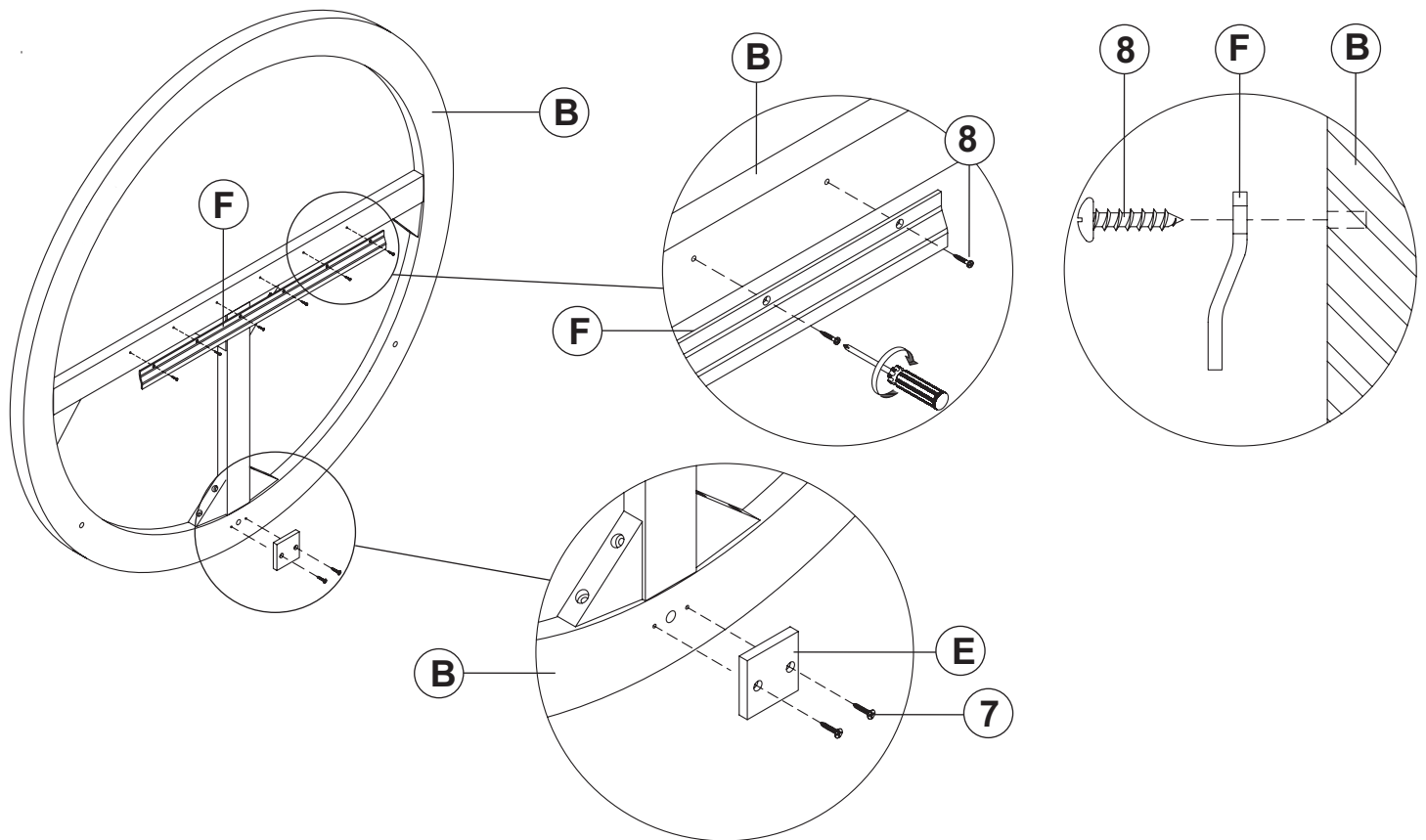
7	FLAT HEAD SCREW (8 x 1" - BLK)		2 PCS
8	SHORT PAN HEAD SCREW (8 x 5/8" - BLK)		6 PCS
9	LONG PAN HEAD SCREW (8 x 2" - BLK)		6 PCS
10	PLASTIC ANCHOR (S8 - GREY)		6 PCS

ITEM: **224304**

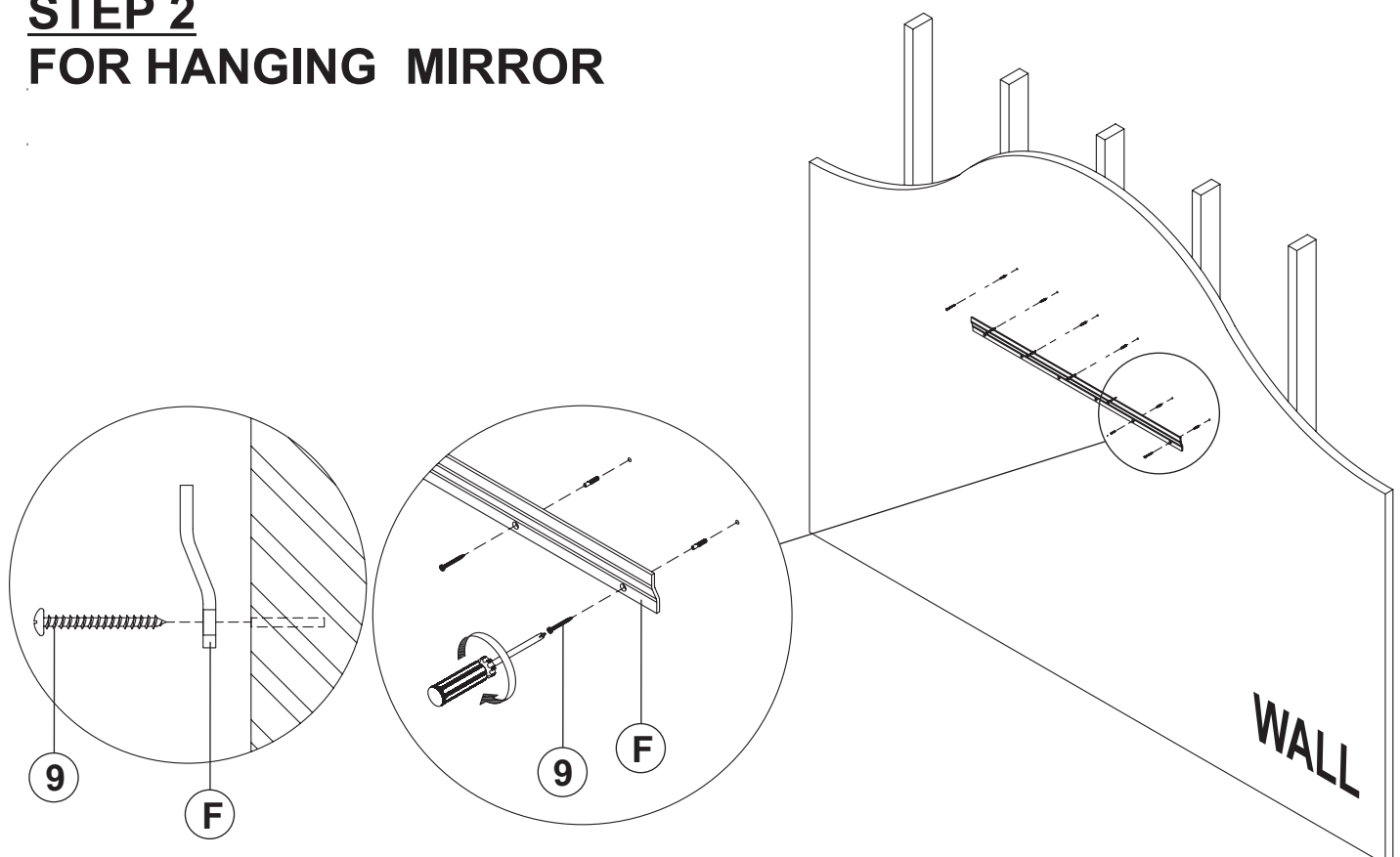
## ASSEMBLY INSTRUCTIONS



## **STEP 1** **FOR HANGING MIRROR**



## **STEP 2** **FOR HANGING MIRROR**

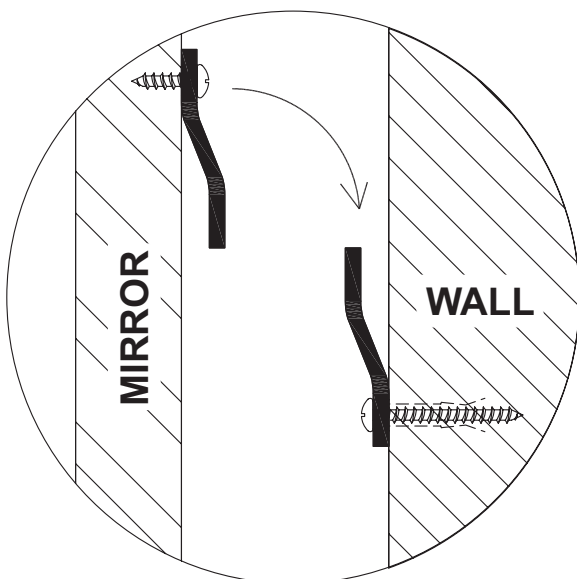
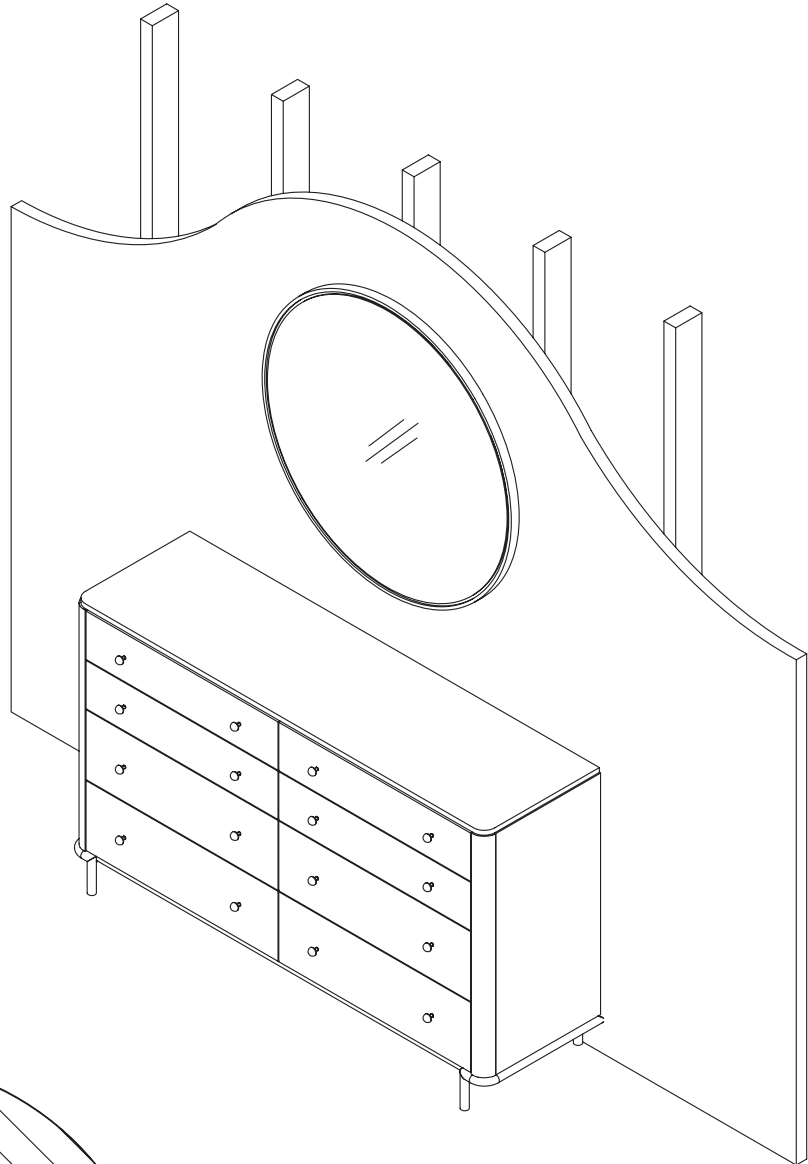


ITEM: **224304**

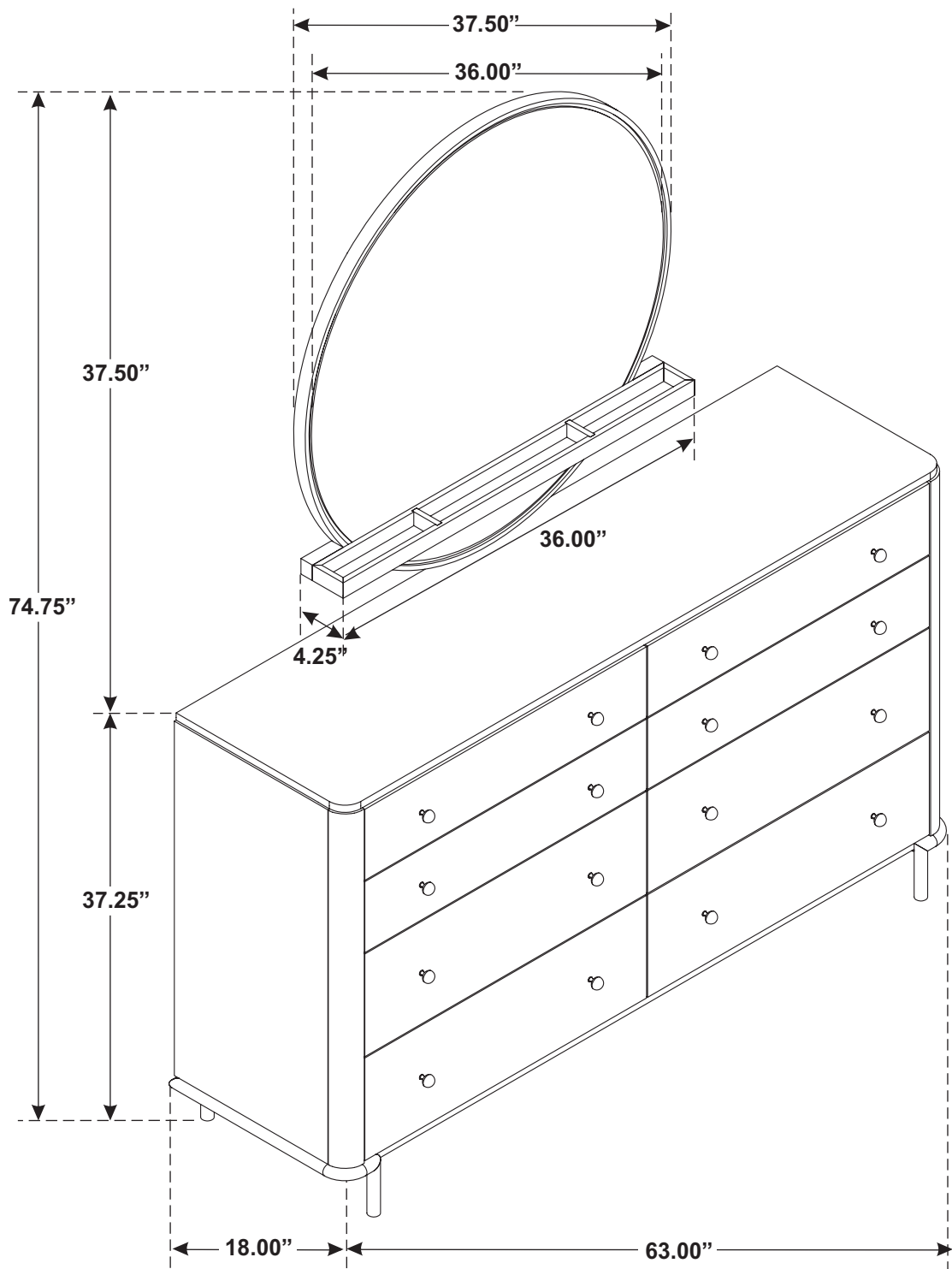
## ASSEMBLY INSTRUCTIONS



### **STEP 3** **FOR HANGING MIRROR** **COMPLETE**



ITEM: **224304**



**Note: Dimension tolerance  $\pm 5\%$**