

ASKO
Inspired by Scandinavia

QUATTRO CONSTRUCTION
1400 RPM

Quick PRO

1200 OFF

ASKO Laundry

Rooted in Scandinavian design

Functionalism, environmental concern, and clean, pleasant lines are the hallmarks of Scandinavian design—and that of ASKO. We believe in the fundamental idea that carefully designed products should improve people's quality of life. To distinguish ourselves in a market of cluttered, complex designs, we aim for soft, humanistic minimalism based on the principle of quiet being the new loud. We place great emphasis on functionality, striving to make life easier through truly user-friendly interfaces, integration of practical functions, and trouble-free, durable products that are pleasing to own.

"The key elements of Scandinavian design – understated elegance, high-quality craftsmanship, and natural materials – are reflected in ASKO's design language."

Jon Carlehed, Head of Design at ASKO Appliances



Introduction

| | |
|---------------------|---|
| Scandinavian design | 4 |
| The ASKO way | 5 |
| Fully loaded | 6 |
| Series | 7 |

Washers

| | |
|----------|----|
| Programs | 9 |
| Modes | 10 |
| Features | 11 |
| Models | 13 |

Tumble Dryers

| | |
|----------------|----|
| Programs | 15 |
| Features | 16 |
| Models | 21 |
| Hidden helpers | 24 |
| Our history | 26 |

ASKO solves the most common laundry issues

To develop the new generation of washing machines and tumble dryers, we met consumers to understand their most common laundry problems. Then we set out to resolve those issues with innovative solutions.



The ASKO way

More efficient, even drying

Our unique Butterfly Drying™ drying solution solves the problem of bundling and creasing. Two paddles gently push clothing in a figure-eight pattern, evenly circulating air through garments.

Vibration-free spinning

All our washing machines possess Quattro Construction™. The inner and outer drum rest on shock absorbers, cancelling nearly all vibration and reducing noise.

Hygienic seal

The hygienic and maintenance-free Steel Seal™ on our washing machines is a superior alternative to the traditional rubber seal. There is simply no place for dirt to gather, eliminating the need for regular cleaning. It also eases loading.

Easier loading

The doors on all ASKO washing machines have a large porthole diameter of 12 inches, making loading and unloading considerably easier.

Fully loaded

Smarter by design, ASKO Laundry appliances are packed with innovative features and designed to make daily life easier. And because they're made using quality steel parts, you can always look forward to years of reliable operation.

Self-cleaning soap dispenser keeps residue off clothes

Large door for easy clothes removal

Steel Seal™ door for better hygiene



Start/stop button with pause function

QuickPro™ ideal for smaller loads in half the time

Quattro™ suspension for whisper-quiet operation

Updated controls for faster and more precise control

Air Lift™ paddles achieve faster drying

Soft Drum™ for gentle drying



Sportswear program for gentle treatment of Goretex® and other high-tech apparel

Easy-access lint filter for quicker cleaning

Butterfly Drying™ for less bundling

A style for every taste

ASKO offers three laundry series: Classic, Logic, and Style. With a range of features and looks, you can pick the best fit for you. ASKO laundry appliances are designed to complement each other, so your washer, dryer, and other ASKO laundry products combine effortlessly.



Style Series:

Available in white, Style Series washers and dryers feature attractive full-color digital displays on stainless steel control panels. Additionally, the washers are auto dosing and feature Sportswear and Conditioning programs.



Logic Series:

Enjoy the minimalist style of Logic Series 2.8 cu ft washers and 5.1 cu ft dryers, available in white and titanium. The stainless steel control panel with digital display offers easy access to more programs and modes than Classic Series models, including Bedding, Hygiene, Allergy, and Steam Refresh.



Classic Series:

Earning Energy Star's Most Efficient rating, Classic Series models boast 2.1 cu ft washers and 4.1 cu ft dryers. Available in white, these models feature an easy-to-read digital display with black digits on a white background. Select from vented, condenser, and heat pump dryer models.

Washers





A special clean

In addition to a host of standard programs, ASKO has several specialized programs to ensure that every garment is properly cared for and cleaned.

Jeans

Designed especially for jeans, this gentle cycle uses more water during the main wash and runs extra rinse cycles to eliminate detergent residue. Available on Logic and Style washers.

Hygiene

Some items, such as baby clothing and kitchen textiles, are more susceptible to stubborn stains. This program washes at a higher temperature and increased spin speeds to provide a deeply hygienic wash. Available on Logic and Style washers.

Conditioning

This is a short program for adding a waterproofing agent to fabrics. The program uses cold water and slower spin speeds. Available on Style washers.

Bedding

For washing large items such as bed sheets, duvets, and pillows. This program uses extra water and additional rinses. Available on Logic and Style washers.

Shirts

A program that prevents wear and creasing of sensitive shirts and blouses. The program washes at low temperatures and uses more water and slower spin speeds. Available on Logic and Style washers.

Dark wash

Eliminates the risk of detergent spots on dark fabrics. Extra rinses and slower spin speeds ensure dark laundry is washed gently and rinsed thoroughly.

Sportswear

A program for waterproof garments, breathable fabrics, and sportswear made of mixed materials. This is a short program that washes at low temperatures and slower spin speeds. Available on Style washers.

Steam Refresh

Use steam to remove odor and wrinkles from non-soiled clothes. To generate the steam, a small amount of water is added to the unit, and then vaporized with the normal heater. Available on Logic washers.

Quick Pro

This is a quick program with high efficiency. The program washes with gentle tumbling and slower spin speeds, completing in just under an hour.

Additional programs: Everyday, Standard cotton, Mix/synthetic, Wool/hand wash, Time program, Auto, Quick, Heavy, Rinse, Spin, Drain, Easy care, and Drum cleaning



A shortcut to improved washing

Enhance wash programs with modes that reduce cycle time, noise, and water and energy consumption or that provide a more intense cleaning.

Normal mode

Normal mode does not make changes to the program. Water, energy, and time is optimized for a perfect washing result of normally soiled loads.

Speed mode

To achieve a thorough wash in less time, Speed mode utilizes more water and energy during the washing cycle.

Green mode

Conserve water and energy with Green mode. To reduce consumption, each stage of the program is extended, resulting in a longer total wash time compared to Normal mode.

Allergy mode

This mode adds water to rinse detergent residues from the load and the detergent compartment. To achieve the best possible wash, Allergy mode uses more water, energy, and time. Available on Logic and Style washers.

Intensive mode

Extra water, energy, and time is added to ensure a thorough wash of heavily soiled items.

Night mode

For extra quiet operation, select Night mode. The drum movements are gentler, and the final spin is slower. Extra time ensures the load is washed perfectly. Available on Style washers.

Innovative features



Dosing with precision

Simply select the soil level of the load and let the Auto Dosing System deliver the precise amount of detergent. The system ensures the water and detergent are well mixed before reaching the clothes, eliminating the risk of spots on dark fabrics and improving overall washing performance.

Dose Assist

Dose Assist recommends the optimal amount of detergent. After the machine is loaded, the measuring sequence begins and then displays the amount of detergent needed. Dose Assist works with non-concentrated or concentrated detergent, and powder or liquid detergent.

Extra washing power

ASKO's Pro Wash™ System is based on a water circulation system originally developed for professional washing machines. The circulation pump effectively dissolves detergent, and dual water nozzles quickly soak clothes from the top of the drum, resulting in a more efficient clean. This system is especially beneficial when washing large loads.



Additional innovative features



Long-lasting, quiet motor

ASKO's brushless motor increases the machine's longevity, reduces noise, and aptly manages high spin speeds.



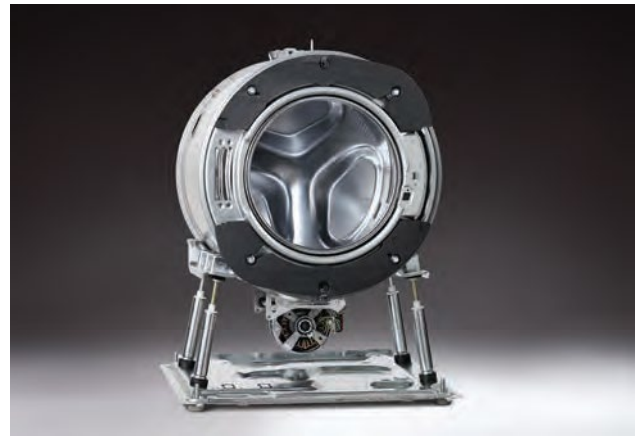
Hygienic Steel Seal™ door

ASKO eliminated the rubber door seal, which can degrade over time and trap dirt and grime. The Steel Seal™ door ensures a more hygienic wash and aids simple loading and unloading. All ASKO washers have this long-lasting door solution.



Tough on dirt, gentle on fabrics

Hourglass-shaped, removable lifters guide the load into the gentler center of the drum and effectively remove large debris, such as dirt and gravel, via large holes around the edge of the drum. Active Drum™ is perfectly balanced to provide the best possible performance while minimizing wear on fabrics.



Vibration-free construction

Quattro™ Construction is a weight-distribution system that reduces vibration, noise, and wear on the machine. Even at maximum speed, the machine is virtually vibration-free. The Quattro™ system is extremely durable and prolongs the life of the entire machine.

Washers



W6124XW | User Interface: Style | Color: White

Capacity/consumption

- Drum volume: 2.8 cu. ft.
- Capacity cotton: 26.5 lbs
- Maximum spin speed: 1400 RPM

Programs

- | | |
|--------------------|----------------------|
| ■ Universal | ■ Stain program |
| ■ Cotton | ■ Drum cleaning |
| ■ Mix / Synthetic | ■ Jeans |
| ■ Wool / Hand wash | ■ Shirts |
| ■ Time program | ■ Hygiene |
| ■ Auto | ■ Sports wear |
| ■ Quick | ■ Conditioning |
| ■ Heavy | ■ Bedding |
| ■ Rinse | ■ Quick Pro |
| ■ Spin | ■ Dark wash |
| ■ Drain | ■ Allergy Cotton |
| ■ Easy Care | ■ Allergy Synthetics |

Modes

- | | |
|-----------|-------------|
| ■ Normal | ■ Speed |
| ■ Green | ■ Intensive |
| ■ Allergy | ■ Night |

Features

- Full steel design concept
- Quattro Construction™ with cast iron weights
- Active Drum™
- Steel Seal™
- ASKO Pro Wash™
- Auto Dosing system
- Brushless motor
- Full graphic color display (TFT)
- 6 favorite programs
- 25 languages
- Dose Assist
- Steam
- Load light
- ECO connection (hot & cold water fill)



W4114CW | W4114CT | User Interface: Logic | Color: White | Titanium

Capacity/consumption

- Drum volume: 2.8 cu. ft.
- Capacity cotton: 24.3 lbs
- Max spin speed: 1400 RPM

Programs

- | | |
|--------------------|----------------------|
| ■ Universal | ■ Easy Care |
| ■ Cotton | ■ Drum cleaning |
| ■ Mix / Synthetic | ■ Jeans |
| ■ Wool / Hand wash | ■ Shirts |
| ■ Time program | ■ Hygiene |
| ■ Auto | ■ Bedding |
| ■ Quick | ■ Quick Pro |
| ■ Heavy | ■ Dark wash |
| ■ Rinse | ■ Allergy Cotton |
| ■ Spin | ■ Allergy Synthetics |
| ■ Drain | ■ Steam Refresh |

Modes

- | | |
|-----------|-------------|
| ■ Normal | ■ Speed |
| ■ Green | ■ Intensive |
| ■ Allergy | |

Features

- Full steel design concept
- Quattro Construction™ with cast iron weights
- Active Drum™
- Steel Seal™
- Brushless motor
- High Quality LCD display
- 4 favorite programs
- 25 languages
- Dose Assist
- Steam



W2084W | User Interface: Classic | Color: White

Capacity/consumption

- Drum volume: 2.1 cu. ft.
- Capacity cotton: 17.6 lbs
- Max spin speed: 1400 RPM
- ENERGY STAR

Programs

- | | |
|--------------------|-----------------|
| ■ Universal | ■ Spin |
| ■ Cotton | ■ Drain |
| ■ Mix / Synthetic | ■ Easy Care |
| ■ Wool / Hand wash | ■ Drum cleaning |
| ■ Time program | ■ Quick Pro |
| ■ Auto | ■ Dark Wash |
| ■ Quick | |
| ■ Heavy | |
| ■ Rinse | |

Modes

- | | |
|----------|-------------|
| ■ Normal | ■ Intensive |
| ■ Green | ■ Speed |

Features

- Full steel design concept
- Quattro Construction™
- Active Drum™
- Steel Seal™
- Brushless motor
- High Quality LCD display
- 4 favorite programs
- 25 languages
- Dose Assist

Tumble dryers





A customized dry

ASKO tumble dryers offer a full suite of programs to care for and dry every type of fabric and garment.

Bedding

For drying large items, such as sheets and duvet covers. This program uses low heat, extended drying time, and reverse drum movements to prevent bundling.

Shirts

A program for shirts and blouses that dries at a low temperature with reverse drum movements. To prevent creasing, the program runs until the fabric is almost dry. Available on Logic and Style dryers.

Quick Pro

Dry an entire load in less than an hour.

Silk & Wool

For gentle care of sensitive fabrics, this program uses low heat and stops before the fabric is completely dry. Available on Classic and Logic heat pump dryers.

Sportswear

A program for drying waterproof garments, breathable fabrics, and sportswear made of mixed materials. Low heat and extended drying time ensure the load is completely dry. Available on Style dryers.

Conditioning

A program for the thermal activation of waterproofing agents used in the Conditioning washer program. This short program utilizes high heat to ensure optimal waterproofing. Available on Style dryers.

Steam refresh

Ideal for refreshing garments, such as suit jackets, wool sweaters, and dry-clean-only items. Steam removes odors, including cigarette and fire smoke. Available on the Logic heat pump dryer.

Steam wrinkle care

Repetitive steam injections and heat treatments eliminate creases. The low heat caters to sensitive fabrics. Available on the Logic heat pump dryer.

Additional programs: Airing, Auto dry, Auto down (Logic and Style), Auto extra dry, Auto iron dry, Auto jeans (Logic and Style), Auto synthetic, Auto terry (Logic and Style), and Time



There's always room for a heat pump dryer

ASKO's heat pump dryers are closed systems in which the process air constantly circulates inside the tumble dryer, making it possible to install them in confined spaces, with little incoming air. Easy to integrate and install.

Innovative features



Steam is naturally caring

With the steam function, our heat pump dryers offer you a product that takes caring for your clothes to a new level. Steam is a highly effective and gentle means of caring for your shirts, jackets, and trousers. It is an easy way of getting your favorite shirts creaseless, but can also be used for refreshing clothes that don't need washing. You can steam both natural fibers, such as cotton and linen, and synthetics. And you have two different steam programs to choose from: Steam wrinkle care and Steam refresh.



Steam refresh program

In our daily lives we constantly encounter different smells on our clothes. These can include cigarette smoke, exhaust fumes, and odors from animals or food. Our newly developed Steam refresh program is ideal for dealing with such situations. The program freshens up garments such as jackets, wool sweaters, and other items that would normally be dry cleaned or otherwise treated. Steam has proven to be very effective on odors from both cigarettes and fires. The program takes just over 21 minutes.



Steam wrinkle care

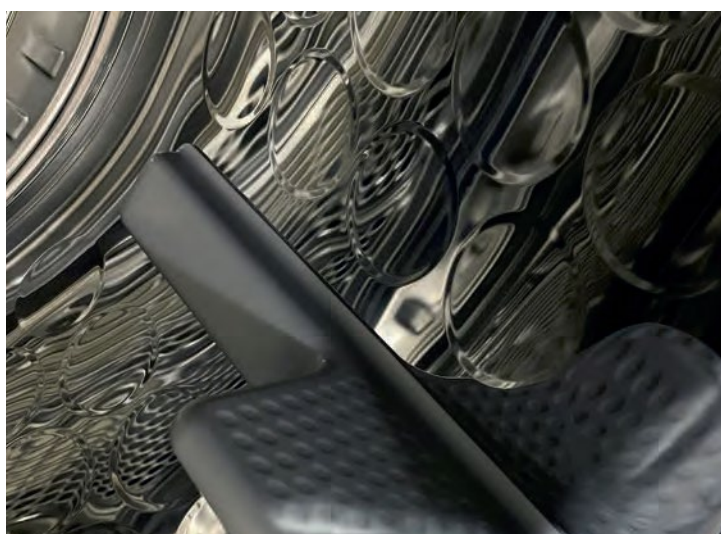
Even if we have done our utmost to create programs that automatically stop to avoid over-drying, creases will still appear in some fabrics. Using the steam wrinkle care program effectively reduces and eliminates creases in, for example, shirts and linen. The program uses repetitive steam injections and heat treatment at low temperatures, which also make it suitable for sensitive fabrics. You can steam treat up to six shirts for perfect results. 200 ml of water is used and the program is done in just 25 minutes or so.

Additional innovative features



Gentle Butterfly Drying™ and Sensi Dry™

ASKO's drying systems work together to protect clothes from bundling, shrinkage, and creasing. Butterfly Drying™ utilizes two paddles inside the drum to gently push clothing in a figure-eight pattern, evenly circulating garments. Sensi Dry™ automatically determines drying time required, ensuring an even and reliable dry. The program automatically stops when the clothes are dry.



Efficient Soft Drum™ and Air Lift™ paddles

The Soft Drum™ cushions and enhances air flow, thereby improving drying efficiency. The beveled, circular indentations reduce wear and tear on fabrics in both small and large loads. The Air lift™ paddles lift the load, evenly distributing clothing and preventing bundling.



Sturdy construction

ASKO uses more steel in its tumble dryers than any other brand. Built on a solid steel base with steel feet, each dryer has no less than five ball bearings.



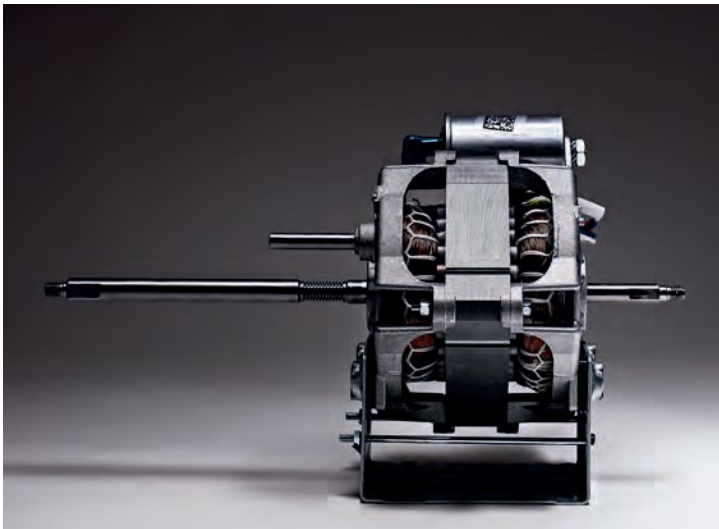
Durable stainless steel drum

At ASKO, we believe stainless steel will outlast plastic, and that quality materials will always look better in years to come. To avoid rusting, ASKO dryers' drums are made of stainless steel. Built with superior materials, ASKO tumble dryers really do last longer.



Interior light

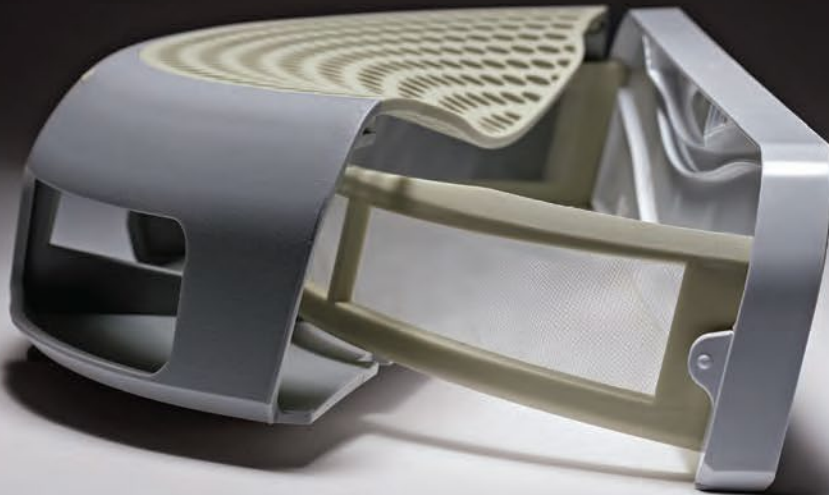
All of our Logic and Style tumble dryers are equipped with an interior LED light that provides ambient light with a premium feeling. It is nice to be able to see those items that can easily be left at the back of the dryer. The porthole is also illuminated for easy loading and unloading.



Long-lasting, quiet motor

ASKO's brushless motor increases the machine's longevity, reduces noise, and is energy efficient.

Protect your dryer from lint



Multi Filter System™ eliminates lint

Lint leads to longer drying times and additional problems. The Multi Filter System™ consists of five separate filters that trap all lint and small particles before reaching the sensitive interior of the tumble dryer.

Lint Trap

The Lint Trap™ is placed in the door and is designed to be easy to empty and clean. Adopt the habit of always checking that the Lint Trap™ is empty before tumble drying. Always empty it after tumble drying.

On all dryers



Front Filter

The Front Filter is in the cooling air inlet of the condenser, protecting the fan wheel from dust. This additional filter extends the condenser unit cleaning interval and ensures the best possible performance over time.

On condenser dryers



Mesh filter

The mesh filter is one of two filters that provides extra protection for the condenser in our heat pump dryers. This filter traps slightly smaller particles than the Lint Trap™. The mesh filter is automatically cleaned with water.

On heat pump dryers



Foam filter

As a final step before the air hits the condenser the foam filter traps the smallest dust particles. The foam filter is easy to clean in a washing machine without detergent and softener.

On heat pump dryers



Lint Cup

Models with a steam function have an additional small filter, the Lint Cup, that protects the steam generator from lint and dust.

On heat pump dryers



Tumble dryers



T611VUW | User Interface: Style | Type: Venting | Color: White

Capacity/consumption

- Drum volume: 5.1 cu. ft.
- Capacity cotton: 24.3 lbs

Programs

- | | |
|-------------------|----------------|
| ■ Auto extra dry | ■ Shirts |
| ■ Auto dry | ■ Sports wear |
| ■ Auto normal dry | ■ Conditioning |
| ■ Auto iron dry | ■ Quick Pro |
| ■ Jeans | ■ Time |
| ■ Synthetic | ■ Airing |
| ■ Terry | |
| ■ Down | |
| ■ Bedding | |

Features

- Full steel design concept
- Soft Drum™
- Air Lift™ Paddles
- Butterfly Drying™
- Brushless motor and drain pump
- Full graphic color display (TFT)
- Interior LED light
- 6 favorite programs
- Lint Trap™



T411HSW | User Interface: Logic | Type: Heat pump | Color: White

Capacity/consumption

- Drum volume: 5.1 cu. ft.
- Capacity cotton: 24.3 lbs
- ENERGY STAR MOST EFFICIENT®

Programs

- | | |
|-------------------|----------------------|
| ■ Auto extra dry | ■ Bedding |
| ■ Auto dry | ■ Silk & wool |
| ■ Auto normal dry | ■ Shirts |
| ■ Auto iron dry | ■ Steam wrinkle care |
| ■ Jeans | ■ Steam refresh |
| ■ Synthetic | ■ Quick Pro |
| ■ Terry | ■ Time |
| ■ Down | ■ Airing |

Features

- Full steel design concept
- Soft Drum™
- Air Lift™ Paddles
- Butterfly Drying™
- Brushless motor and drain pump
- High quality LCD display
- Interior LED light
- 4 favorite programs
- Multi filter system
- Lint Trap™
- Steam



T411VDW | T411VDT | User Interface: Logic | Type: Venting | Color: White | Titanium

Capacity/consumption

- Drum volume: 5.1 cu. ft.
- Capacity cotton: 24.3 lbs

Programs

- | | |
|-------------------|-------------|
| ■ Auto extra dry | ■ Bedding |
| ■ Auto dry | ■ Shirts |
| ■ Auto normal dry | ■ Quick Pro |
| ■ Auto iron dry | ■ Time |
| ■ Jeans | ■ Airing |
| ■ Synthetic | |
| ■ Terry | |
| ■ Down | |

Features

- Full steel design concept
- Soft Drum™
- Air Lift™ Paddles
- Butterfly Drying™
- Brushless motor and drain pump
- High quality LCD display
- Interior LED light
- 4 favorite programs
- Lint Trap™

Tumble dryers



T208HW | User Interface: Classic | Type: Heat pump | Color: White

Capacity/consumption

- Drum volume: 4.1 cu. ft.
- Capacity cotton: 17.6 lbs
- ENERGY STAR

Programs

- | | |
|-------------------|---------------|
| ■ Auto extra dry | ■ Bedding |
| ■ Auto dry | ■ Silk & Wool |
| ■ Auto normal dry | ■ Quick Pro |
| ■ Auto iron dry | ■ Time |
| ■ Synthetic | ■ Airing |

Features

- Full steel design concept
- Soft Drum™
- Air Lift™ Paddles
- Butterfly Drying™
- Brushless motor and drain pump
- High quality LCD display
- 4 favorite programs
- Lint Trap™



T208CW | User Interface: Classic | Type: Condenser | Color: White

Capacity/consumption

- Drum volume: 4.1 cu. ft.
- Capacity cotton: 17.6 lbs

Programs

- | | |
|-------------------|-------------|
| ■ Auto extra dry | ■ Bedding |
| ■ Auto dry | ■ Quick Pro |
| ■ Auto normal dry | ■ Time |
| ■ Auto iron dry | ■ Airing |
| ■ Synthetic | |

Features

- Full steel design concept
- Soft Drum™
- Air Lift™ Paddles
- Butterfly Drying™
- Brushless motor and drain pump
- High quality LCD display
- 4 favorite programs
- Lint Trap™



T208VW | User Interface: Classic | Type: Venting | Color: White

Capacity/consumption

- Drum volume: 4.1 cu. ft.
- Capacity cotton: 17.6 lbs

Programs

- | | |
|-------------------|-------------|
| ■ Auto extra dry | ■ Bedding |
| ■ Auto dry | ■ Quick Pro |
| ■ Auto normal dry | ■ Time |
| ■ Auto iron dry | ■ Airing |
| ■ Synthetic | |

Features

- Full steel design concept
- Soft Drum™
- Air Lift™ Paddles
- Butterfly Drying™
- Brushless motor and drain pump
- High quality LCD display
- 4 favorite programs
- Lint Trap™



Hidden Helpers

ASKO's Hidden Helpers™ laundry accessories simplify life with convenient and compact storage of laundry accessories. The pull-out basket, ironing board, and double and single shelves seamlessly integrate with ASKO washers and dryers, disappearing behind a push/pull door.



Placing it on a pedestal?

Pedestals are metal risers, installed beneath ASKO front-load washers and dryers. Pedestals raise the appliance off the floor, providing greater accessibility and reducing the amount of bending required to load and unload.

Classic Pedestals

HPS5323W

- Pedestal drawer with shelf



HPS5000W

- 12" Height White Pedestal Riser



Compatible White Washers & Dryers:

W2084W, T208VW, T208CW, T208HW

Logic & Style Pedestals

HPS6324W

- 12" Height White Pedestal Riser



Compatible White Washers & Dryers:

W4114CW, W6124XW, T411VDW, T411HSW, T611VUW

HPS6324T

- 12" Height Titanium Pedestal Riser



Compatible Titanium Washers & Dryers:

W4114CT, T411VDT

Pull-Out Basket | Color: White



The deep, steel wire basket aids in unloading and can be easily carried to ironing and folding work surfaces.

Description:

- Dimensions (HxWxD): 5 7/8" x 23 1/2" x 23 1/8"
- Maximum Load: 11 lbs
- Installation Type: Integrated

Features:

- Push/Pull opening
- Removable deep wire basket
- Integration with washer and dryer



Compatible White Washers & Dryers:

W2084W, W4114CW, W6124XW, T208VW, T208CW, T208HW, T411VDW, T411HSW, T611VUW

Ironing Board | Color: White / Titanium



Built on telescopic rails, the board pulls out and locks into place for ironing, and then safely collapses to invisibly store away when not in use.

Description:

- Dimensions (HxWxD): 5 7/8" x 23 1/2" x 23 1/8"
- Maximum Load: 22 lbs
- Installation Type: Integrated

Features:

- Push/Pull opening
- Adjustable telescopic rails
- Hidden ironing board
- Integration with washer and dryer



Compatible White Washers & Dryers:

W2084W, W4114CW, W6124XW, T208VW, T208CW, T208HW, T411VDW, T411HSW, T611VUW

Compatible Titanium Washers & Dryers:

W4114CT, T411VDT

Double Shelf | Color: White / Titanium



It comes with both a removeable wire basket and sturdy, telescopic pull-out shelf, aiding in unloading, folding, and carrying of laundry.

Description:

- Dimensions (HxWxD): 5 7/8" x 23 1/2" x 23 1/8"
- Maximum Load: 22 lbs
- Installation Type: Integrated

Features:

- Push/Pull opening
- Removable wire basket
- Adjustable telescopic rails
- Pull-out shelf
- Integration with washer and dryer



Compatible White Washers & Dryers:

W2084W, W4114CW, W6124XW, T208VW, T208CW, T208HW, T411VDW, T411HSW, T611VUW

Compatible Titanium Washers & Dryers:

W4114CT, T411VDT

Single Shelf | Color: White

It aids with loading/unloading, sorting, and folding of clothes, and then invisibly stores away when not in use. It is a sleek solution for additional, flexible work space.

Description:

- Dimensions (HxWxD): 2" x 23 1/2" x 22 1/4"
- Maximum Load: 22 lbs
- Installation Type: Integrated

Features:

- Push/Pull opening
- Pull-out shelf
- Integration with washer and dryer



Compatible White Washers & Dryers:

W2084W, T208VW, T208CW, T208HW

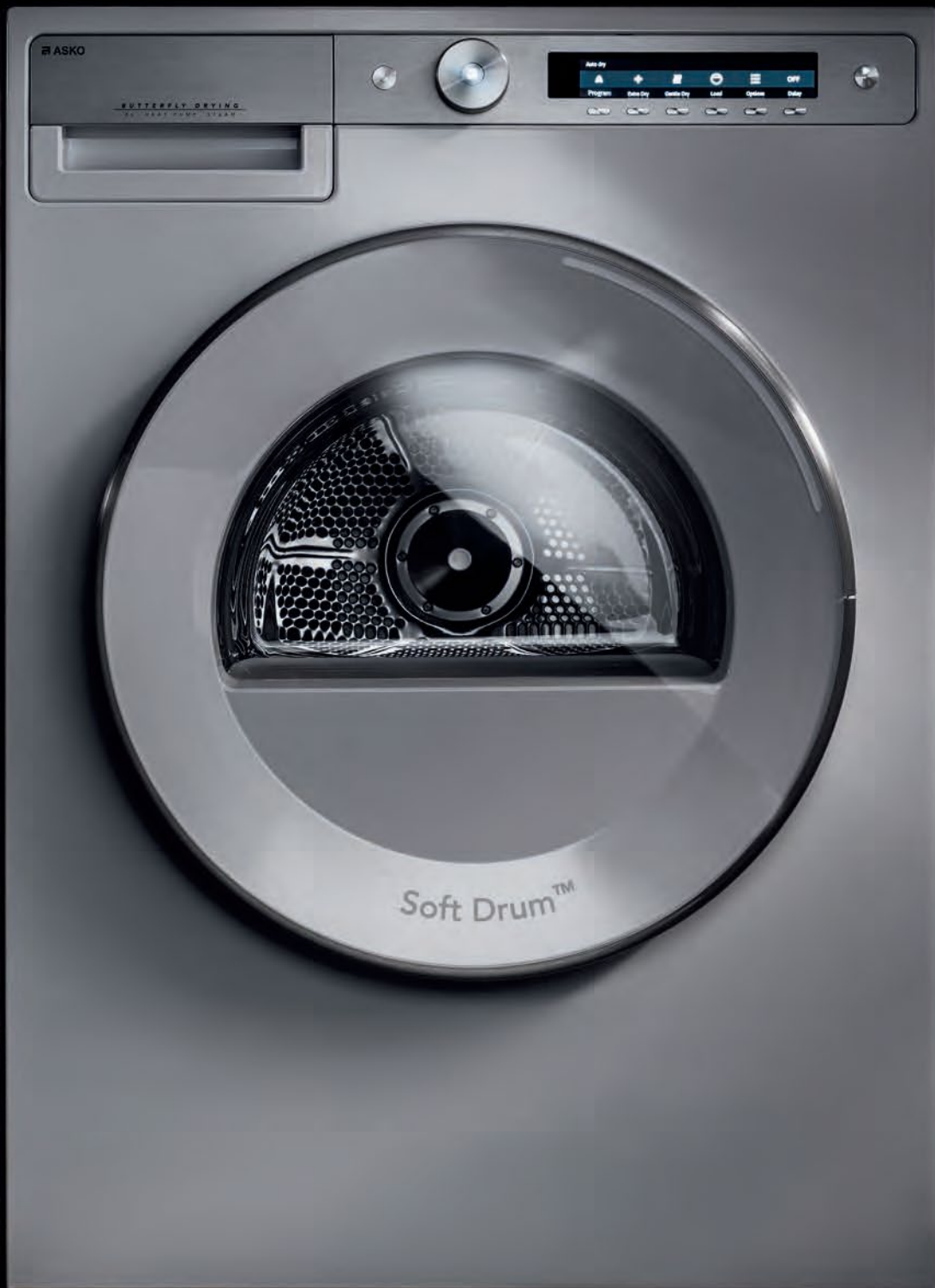
In pursuit of the dream machine

Our founder, Karl-Erik Andersson, created the first ASKO washing machine. He built it for his mother, to make her life a bit easier. The result was impressive. Rooted in the tradition of always keeping the end user's needs in mind, ASKO has designed and developed laundry products for over 65 years. Our first laundry products were designed to last, made with high-quality materials, even in the smallest detail. The new ASKO washers and dryers carry on the tradition and have new laundry care innovations.

Today, people use clothes made from a large variety of fabrics, buy expensive and delicate garments, live active lives, and change outfits from day to day. ASKO has done its best to learn from real people, finding out what they believe are the biggest problems in the laundry room and what their dream machine would be like. We combined these insights with our years of experience in both domestic and commercial laundry to create a new generation of user-friendly, innovative, and long-lasting washing machines and tumble dryers.







ASKO
Inspired by Scandinavia

ASKO AMERICAS • 7310 MCGINNIS FERRY ROAD SUWANNEE, GA 30024 • (678) 318-9060