

Astoria

Caracole

Best viewed from the back, this occasional chair features an open metal framework and a beautifully woven reminiscent of a vintage French Aubusson tapestry. Splayed wood legs in an Almost Black finish lend striking contrast to a tactile, ivory linen-blend fabric on the inside back and seat, with Brushed Gold front metal ferrules for added distinction.



SKU: CLA-023-283

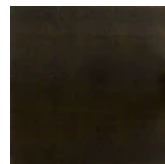
Dimensions in Inches: 20.0W × 22.25D × 35.0H

Dimensions in CM: 50.8W × 56.515D × 88.9H

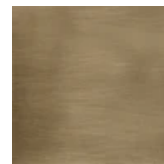
Features:

- Metal top frame in Brushed Gold.
- Seat deck and legs in Almost Black.
- Upholstered seat, inside and outside back.
- Front metal ferrules in Brushed Gold.
- Chair is packaged and sold 1 per carton.

Finish:



Almost Black



Brushed Gold

Fabric:



2984-87CC-P Performance



4134-30CC