




Bob Timberlake®

AMERICAN HOME

by Archbold Furniture

3

"No matter where you
make your nest, it's how
you feather  it
that makes the difference."

Bob Timberlake



Bob Timberlake[®]
AMERICAN HOME



"Gilly's Cows"

Internationally renowned artist, Bob Timberlake, is best known for his realism paintings of the rural south and wildlife which have sold out galleries around the world. Bob has licensed designs in all categories of home furnishings, designed four United States postage stamps and even an outdoor apparel collection for Bass Pro Shops. All of his art and designs are featured at The Bob Timberlake Gallery and on www.bobtimberlake.com based in his hometown of Lexington, North Carolina.

After designing the most successful furniture collection in history, "World of Bob Timberlake", he followed that in 2010 with another successful collection, "Another World".

Now, the 86-year-old has embarked on a new line highlighting American products crafted with excellence. Bob approached Archbold Furniture Company and Carolina Custom Leather in 2022 with the idea to design a furniture collection that embodied American values. He would only partner with manufacturers in the United States.

"I've fought hard for 30 years to keep my furniture "Made in America", believing American craftsmanship is second to none," says Bob Timberlake. "I spent a few days with Archbold at their facilities and having worked closely with Carolina Custom Leather this past year, there is no question this fact remains true today."

When I started to dream about my next furniture collection, I wanted to focus on my three most important and enjoyable things in life: my faith, my family and all my wonderful friends. The first focus was on my faith in American Craftsmen which is unquestionably second to none. We evaluated the best industry partners and developed a strong relationship with the McNamara family at Archbold Furniture and Stroud family at Carolina Custom Leather to collaborate on AMERICAN HOME.

We committed ourselves in the design, development and construction of furniture made in America by Americans with the quality and style we want for our families and friends. We also wanted to offer the highest quality value products in the market for the consumer. Each piece of AMERICAN HOME has a unique story and significance personal to my life, my family and friends.

AMERICAN HOME features solid wood construction, custom finish and unparalleled retail and consumer support by Archbold. Our leather and upholstered products by Carolin Custom Leather are both unique and stylish with an specific emphasis on comfort for daily living. On a personal level, AMERICAN HOME has already exceeded my expectations, and I was elated to learn American Craftsmanship is both alive and well.

It's my hope you will appreciate the craftsmanship, the quality and comfort of AMERICAN HOME, and you'll share it with your family and friends as well.



Bob Timberlake
AMERICAN HOME



833 Vintage CV

Sealy CY

Natural CN

Walnut CW

Earthtone CE

Driftwood CD

Smoked CS

Onyx CO

Greystone CG – premium

Latte CL – premium

Matte
Black
-MBSatin
Nickel
-SNChamp
Pewter
-CPChamp
Gun
Metal
-CGChamp
Copper
-CCBlack Forge
-BFIron Forge
-IFOld World
-OW

All AMERICAN HOME furniture is thoughtfully crafted and built in beautiful cherry wood. Its lovely grain and interesting character made it the obvious choice. With ten finishes to choose from, you can cater to your own individual style.

Fine quality, durable hardware adds that finishing touch. Knobs and pulls are available in eight styles.


Bob Timberlake
 AMERICAN HOME



Bedroom

*"Make a bed
as if an angel was
going to sleep in it."
Bob Fittler*





T3410 Fitzgerald
10 Drawer
Dresser finished
in 833 Vintage



T35199, T35099, T352991 Fitzgerald King Bed
finished in 833 Vintage

Fitzgerald Bedroom Collection

Rooted in the traditions of American Craftsmanship, our furniture is a testament to the enduring values of quality, durability, and the joy of creating spaces for family and friends.



"Studio Geraniums"



Fitzgerald Bedroom Collection

"Nap Time 1-3 PM"
Bob Timberlake



Fitzgerald King Bed

T35199, T35099, T352991

66 $\frac{3}{4}$ "H x 81"W x 91"L

- FB: 31 $\frac{3}{4}$ "H x 5"D
- Floor to top of slats: 9 $\frac{3}{4}$ "
- Number slats: 5
- Number foot supports: 5

Fitzgerald Queen Bed

T35198, T35098, T352981

65"H x 65"W x 91"L

- FB: 30"H x 5"D
- Floor to top of slats: 9 $\frac{3}{4}$ "
- Number slats: 5
- Number foot supports: 2



Fitzgerald King Bed - FB Storage

T35199, T32292, T322921

66 $\frac{3}{4}$ "H x 83"W x 94"L

- FB: 18"H x 83"W
- Floor to top of slats: 15 $\frac{3}{4}$ "
- Number slats: 8
- Number foot supports: 5

Fitzgerald Queen Bed - FB Storage

T35198, T32291, T322911

65"H x 67"W x 94"L

- FB: 18"H x 67"W
- Floor to top of slats: 15 $\frac{3}{4}$ "
- Number slats: 8
- Number foot supports: 2



**Fitzgerald
1 Drawer Nightstand**

T3401
30"H x 25"W x 18"D



**Fitzgerald
3 Drawer Nightstand**

T3403
30"H x 25"W x 18"D



**Fitzgerald
6 Drawer Lingerie**

T3406
54"H x 25"W x 18"D



Fitzgerald 8 Drawer Dresser

T3408
39¼"H x 64⅜"W x 18"D



**Fitzgerald
Wide 5
Drawer Chest**

T3425
54"H x 40⅞"W x 18"D

**Fitzgerald
5 Drawer Chest**

T3415
54"H x 35¼"W x 18"D



Fitzgerald 10 Drawer Dresser

T3410
50¼"H x 64⅜ x 18"D

**Arched Top Mirror
(not shown)**

T3147
42"H x 43"W x 2"D

Finish & Hardware

Choose your style. Knob and handle boring locations are not interchangeable.



**Matte
Black**
-MB



**Satin
Nickel**
-SN



**Champ
Pewter**
-CP



**Champ
Gun Metal**
-CG



**Champ
Copper**
-CC



**Black
Forge**
-BF



**Iron
Forge**
-IF



**Old
World**
-OW

833 Vintage CV

Sealy CY

Natural CN

Walnut CW

Earthtone CE

Driftwood CD

Smoked CS

Onyx CO

Greystone CG - premium

Latte CL - premium





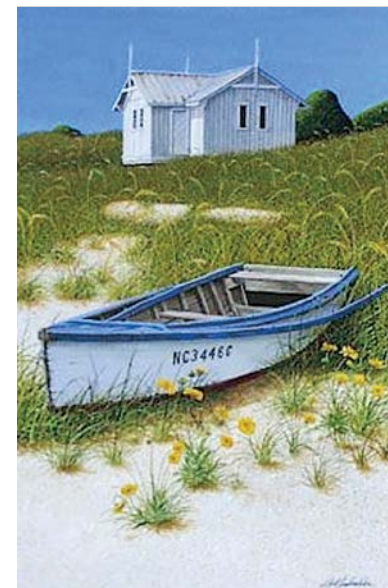
T32195, T32291,
T322911
Musgrave
Queen Bed -
FB Storage
finished in
Greystone



T3101 Musgrave
1 Drawer
Nightstand
finished in
Greystone

Musgrave Bedroom Collection

At the heart of our creations is a dedication to the American spirit of craftsmanship, where each piece of furniture is more than an object – it's a legacy of enduring quality.



"NC3446G"



Musgrave Bedroom Collection

*"Comfort is my
best luxury."*
Bob Timberlake



Musgrave King Bed

T32296, T322991

59"H x 81"W x 91"L

- FB: 21"H x 81"W x 3"D
- Floor to top of slats: 9¾"
- Number slats: 5
- Number foot supports: 5

Musgrave Queen Bed

T32295, T322981

59"H x 68"W x 91"L

- FB: 21"H x 3"D
- Floor to top of slats: 9¾"
- Number slats: 5
- Number foot supports: 2



Musgrave King Bed - FB Storage

T32196, T32292, T322921

59"H x 83"W x 96"L

- FB: 18"H x 83"W
- Floor to top of slats: 15¾"
- Number slats: 8
- Number foot supports: 5

Musgrave Queen Bed - FB Storage

T32195, T32291, T322911

59"H x 67"W x 96"L

- FB: 18"H x 67"W
- Floor to top of slats: 15¾"
- Number slats: 8
- Number foot supports: 2



**Musgrave
2 Drawer Nightstand**
T3102
29¾"H x 26½"W x 17½"D



**Musgrave
1 Drawer Nightstand**
T3101
29¾"H x 19"W x 17½"D



**Musgrave
5 Drawer Tall Chest**
T3125
56¾"H x 39"W x 20"D



**Musgrave
5 Drawer Small Chest**
T3115
45¼"H x 34¾"W x 20"D



Musgrave 7 Drawer Dresser
T3107
37¾"H x 64"W x 20"D



Musgrave 9 Drawer Dresser
T3109
45¼"H x 64"W x 20"D

**Arched Top
Mirror**
T3147
42"H x 43"W
x 2"D

Finish & Hardware

Choose your style. Knob and handle boring locations are not interchangeable.



**Matte
Black**
-MB



**Satin
Nickel**
-SN



**Champ
Pewter**
-CP



**Champ
Gun Metal**
-CG



**Champ
Copper**
-CC



**Black
Forge**
-BF



**Iron
Forge**
-IF



**Old
World**
-OW

833 Vintage CV

Sealy CY

Natural CN

Walnut CW

Earthtone CE

Driftwood CD

Smoked CS

Onyx CO

Greystone CG - premium

Latte CL - premium





T3309 Leonhardt
9 Drawer Dresser
with Sealy finish



T31253, T322981 Leonhardt Queen Bed
with Sealy finish

Leonhardt Bedroom Collection

Our commitment to crafting furniture for families and friends is woven into every detail, reflecting the timeless tradition of American artisanship and quality.



"Yard Birds"



Leonhardt Bedroom Collection

*"Arts and Crafts
goes with everything."
Bob Timberlake*



Leonhardt King Bed

T31254, T322991

55 $\frac{3}{4}$ "H x 88"W x 87"L

- FB: 24 $\frac{3}{4}$ "H x 88"W x 3"D
- Floor to top of slats: 9 $\frac{3}{4}$ "
- Number slats: 5
- Number foot supports: 5

Leonhardt Queen Bed

T31253, T322981

55 $\frac{3}{4}$ "H x 72"W x 87"L

- FB: 24 $\frac{3}{4}$ "H x 72"W x 3"D
- Floor to top of slats: 9 $\frac{3}{4}$ "
- Number slats: 5
- Number foot supports: 2



Leonhardt King Bed - FB Storage

T31154, T32292, T322921

55 $\frac{3}{4}$ "H x 88"W x 92"L

- FB: 18"H x 83"W
- Floor to top of slats: 15 $\frac{3}{4}$ "
- Number slats: 8
- Number foot supports: 5

Leonhardt Queen Bed - FB Storage

T31153, T32291, T322911

55 $\frac{3}{4}$ "H x 72"W x 92"L

- FB: 18"H x 67"W
- Floor to top of slats: 15 $\frac{3}{4}$ "
- Number slats: 8
- Number foot supports: 2



**Leonhardt
4 Drawer Nightstand**
T3304
29¾"H x 32"W x 17¼"D



Leonhardt Lingerie Chest
T3305
56¼"H x 25½"W x 17¼"D



**Leonhardt
8 Drawer Chest**
T3328
56¼"H x 45"W x 19¼"D



Leonhardt Mirror
T3347
42"H x 43"W x 2"D



Leonhardt 9 Drawer Dresser
T3309
46¼"H x 64½"W x 19¼"D

Finish & Hardware

Choose your style. Knob and handle boring locations are not interchangeable.



**Matte
Black**
-MB



**Satin
Nickel**
-SN



**Champ
Pewter**
-CP



**Champ
Gun Metal**
-CG



**Champ
Copper**
-CC



**Black
Forge**
-BF



**Iron
Forge**
-IF



**Old
World**
-OW

833 Vintage CV

Sealy CY

Natural CN

Walnut CW

Earthtone CE

Driftwood CD

Smoked CS

Onyx CO

Greystone CG - premium

Latte CL - premium





T3218 Chetola 8 Drawer Chest in
833 Vintage finish with Old World hardware



T36198, T36098
Chetola Queen Bed
in 833 Vintage finish

Chetola Bedroom Collection



"Bath Tub"



Chetola Bedroom Collection



*"There is nothing that
compares with furniture
varnished with generations
of Love."*
Bob Timberlake

Chetola King Bed

T36199, T36099, T352991
66"H x 81"W x 91"L
• FB: 31"H x 81"W x 5"D
• Floor to top of slats: 9¾"
• Number slats: 5
• Number foot supports: 5

Chetola King Bed - FB Storage

T36199, T32292, T322921
66"H x 81"W x 94"L
• FB: 18"H x 80"W x 26½"D
• Floor to top of slats: 15¾"
• Number slats: 8
• Number foot supports: 5

Chetola Queen Bed

T36198, T36098, T352981
65"H x 65"W x 91"L
• FB: 30"H x 65"W x 5"D
• Floor to top of slats: 9¾"
• Number slats: 5
• Number foot supports: 2

Chetola Queen Bed - FB Storage

T36198, T32291, T322911
65"H x 65"W x 94"L
• FB: 18"H x 64"W x 26½"D
• Floor to top of slats: 15¾"
• Number slats: 8
• Number foot supports: 2



Chetola Mirror
T3247
42"H x 43"W x 2"D



Chetola 9 Drawer Dresser
T3209
44¼"H x 64½"W x 19¼"D



Chetola 4 Drawer Nightstand
T3204
27¾"H x 32"W x 17¼"D



Chetola Linen Chest
T3205
54¼"H x 25½"W x 17¼"D



Chetola 8 Drawer Chest
T3218
54¼"H x 45"W x 19¼"D

Finish & Hardware

Choose your style. Knob and handle boring locations are not interchangeable.

Matte Black
-MB



Satin Nickel
-SN



Champ Pewter
-CP



Champ Gun Metal
-CG



Champ Copper
-CC



Black Forge
-BF



Iron Forge
-IF



Old World
-OW



833 Vintage CV

Sealy CY

Natural CN

Walnut CW

Earthtone CE

Driftwood CD

Smoked CS

Onyx CO

Greystone CG - premium

Latte CL - premium



Dining

"Be not forgetful to entertain strangers for thereby some have entertained angels unawares." Hebrews 13:2





T3643672T,
T3644284B,
T3644284S
Riverwood
Trestle Table -
36 x 72 and
T37130 Naomi
Side Chair with
833 Vintage
finish



T3060 Sharon
Server with 833
Vintage finish

Riverwood Dining Table



"Summer Berries"





T3653672T, T3654284B, T3653672S
Piedmont Trestle Table - 36 x 72
and Butterfly Side Chair with Walnut finish



T3653672T, T3654284B, T3653672S Piedmont Trestle Table -
36 x 72 and Butterfly Side Chair with Walnut finish

Piedmont Dining Table



"Barn Barrel"





T3615454T,
T3615454B
Davidson
Pedestal Table
in 833 Vintage
finish.

T37310 Olson
Fabric Side
Chair in Snow
White Fabric



Davidson Dining Table



"Pride in the Carolinas"





T37120
Butterfly Side
Chair with
Walnut finish



T3061 Sherry
Server - Open
Shelf with
Walnut finish

Edgar Dining Table



"Cabin Window"



Dining Tables

**Realistic
Faux Live Edge
(no rough edges)**



Riverwood Trestle Table - 36 x 72
T3643672T, T3644284B, T3644284S
30"H x 36"W x 72"L



Riverwood Trestle Table - 42 x 84
T3644284T, T3644284B, T3644284S
30"H x 42"W x 84"L



Riverwood Trestle Table - 42 x 96
T3644296T, T3644296B, T3644296S
30"H x 42"W x 96"L



**Piedmont Trestle
Table - 36 x 72**
T3653672T,
T3654284B,
T3653672S
30"H x 36"W x 72"L

**Piedmont Trestle
Table - 42 x 84**
T3654284T,
T3654284B,
T3654284S
30"H x 42"W x 84"L

**Piedmont Trestle
Table - 42 x 96**
T3654296T,
T3654284B,
T3654284S
30"H x 42"W x 96"L

*"I've always loved wood,
live edges, pegs and
hand made styling."*
Bob Timberlake

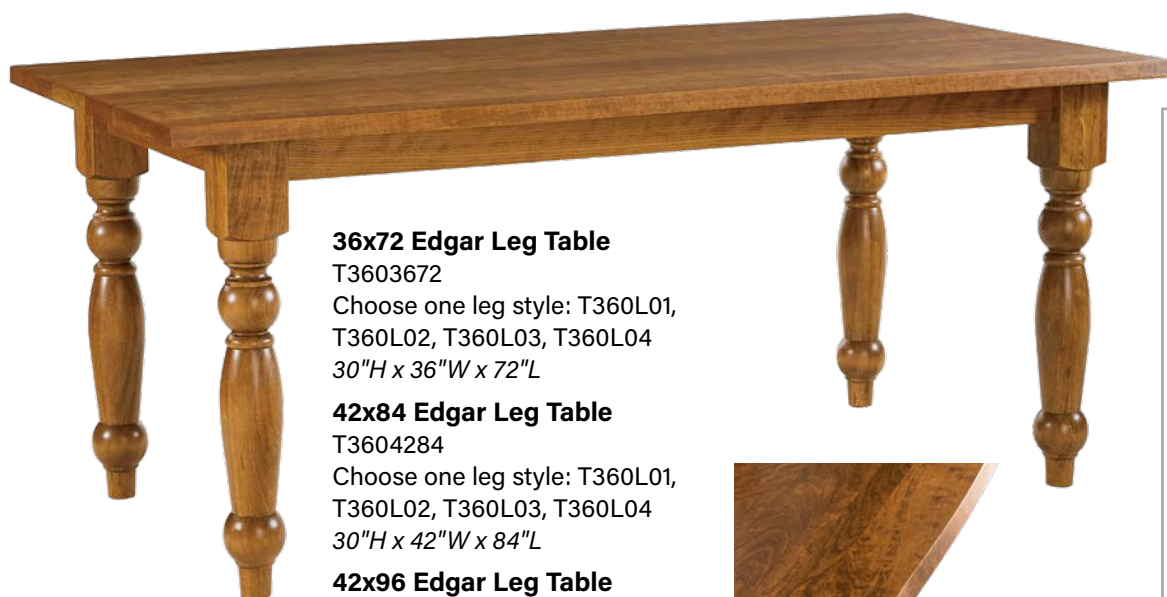


Davidson Pedestal Table
T3615454T, T3615454B
30"H x 54"W x 54"L - 2-12" leaves

Davidson Pedestal Table
shown with
2 leaves



*This table is named after
my county, Davidson where
Ray and I are proud to
enjoy 22 generations.*
Attila



36x72 Edgar Leg Table

T3603672

Choose one leg style: T360L01,
T360L02, T360L03, T360L04
30"H x 36"W x 72"L

42x84 Edgar Leg Table

T3604284

Choose one leg style: T360L01,
T360L02, T360L03, T360L04
30"H x 42"W x 84"L

42x96 Edgar Leg Table

T3604296

Choose one leg style: T360L01,
T360L02, T360L03, T360L04
30"H x 42"W x 96"L



**Realistic
Faux Live Edge**
(no rough edges)

NOTE:

Edgar Table is available with choice
of four leg styles:

- T360L01 = Tapered
- T360L02 = Turned (shown on table)
- T360L03 = Square
- T360L04 = Chamfered



Tapered



Square



Chamfered

833 Vintage CV

Sealy CY

Natural CN

Walnut CW

Earthtone CE

Driftwood CD

Smoked CS

Onyx CO

Greystone CG - premium

Latte CL - premium



Dining Chairs & Servers



Naomi Side Chair

T37130

41"H x 20"W x 22"D



Naomi Arm Chair

T37230

41"H x 25"W x 22"D



Freeman Side Chair

T37131

41"H x 20"W x 22"D



Freeman Arm Chair

T37231

41"H x 25"W x 22"D



Butterfly Side Chair

T37120

42"H x 18 1/4"W x 22"D



Butterfly Arm Chair

T37220

42"H x 23"W x 22"D



Diamond Side Chair

T37121

42"H x 18 1/4"W x 22"D

**Diamond Arm Chair
(not shown)**

T37221

42"H x 23"W x 22"D



Olson Fabric Side Chair

T37310

43"H x 20"W x 28"D

Fabric Options

Olson Fabric
Side Chair only

Snow
-S

Beige
-B

Gray
-G

*"It isn't so much what's
on the table that matters
as what's on the chairs."
W. P. Gilbert*



Sharon Server
T3060
38¼"H x 60"W x 18"D



**Sherry Server -
Open Shelf**
T3061
37½"H x 60"W x 18"D

Finish & Hardware

Choose your style. Knob and handle boring locations are not interchangeable.

**Matte
Black**
-MB



**Satin
Nickel**
-SN



**Champ
Pewter**
-CP



**Champ
Gun Metal**
-CG



**Champ
Copper**
-CC



Black Forge
-BF



Iron Forge
-IF



Old World
-OW



833 Vintage CV

Sealy CY

Natural CN

Walnut CW

Earthtone CE

Driftwood CD

Smoked CS

Onyx CO

Greystone CG - premium

Latte CL - premium





T3660T, T3660
Kitchen Island in
Sealy finish



Kitchen Island

Crafted by skilled hands in the USA, our furniture is a statement of enduring quality, designed to be the backdrop for countless memories created with family and friends.



"Strawberries for Lunch"



Kitchen Island
Collection

*"Never eat more than
you can lift."
Miss Piggy*



Kitchen Island
T3660T, T3660
36"H x 60"W x 36"D



Kitchen Island
in Greystone CG Finish





Kitchen Island
(back view)



**Counter Height
Saddle Stool**
T37050
24"H x 18"W x 14"D

Finish & Hardware

Choose your style. Knob and handle boring locations are not interchangeable.

**Matte
Black**
-MB



**Satin
Nickel**
-SN



**Champ
Pewter**
-CP



**Champ
Gun Metal**
-CG



**Champ
Copper**
-CC



Black Forge
-BF



Iron Forge
-IF



Old World
-OW



833 Vintage CV

Sealy CY

Natural CN

Walnut CW

Earthtone CE

Driftwood CD

Smoked CS

Onyx CO

Greystone CG - premium

Latte CL - premium



Home Office

*"Imagination is more
important than knowledge."
Albert Einstein*





T3504 Study Desk
in Sealy finish

T37325 Leather
Office Chair



T3507 Executive Desk and T37325 Leather Office Chair
in 833 Vintage finish

Dr. Redwine Home Office Collection

More than furniture, each piece is a reflection of the American commitment to excellence, ensuring that it serves as a reliable and beautiful backdrop to the moments shared with loved ones.



"First Light Flight"

Bob Timberlake
AMERICAN HOME



*Dr. Redwine
Home Office
Collection*



Credenza / Hutch
T3555 / T3557
30"H x 70"W x 26"D
48"H x 73"W x 18¼"D



Leather Office Chair
T37325
42"H x 24"W x 26"D



Executive Desk
T3507
30"H x 66"W x 32"D



Leather Accent Chair
T37320
42"H x 24½"W x 27¼"D

Finish & Hardware

Choose your style. Knob and handle boring locations are not interchangeable.

Matte Black
-MB



Satin Nickel
-SN



Champ Pewter
-CP



Champ Gun Metal
-CG



Champ Copper
-CC



Black Forge
-BF



Iron Forge
-IF



Old World
-OW



833 Vintage CV

Sealy CY

Natural CN

Walnut CW

Earthtone CE

Driftwood CD

Smoked CS

Onyx CO

Greystone CG - premium

Latte CL - premium



Bookcase

T3580 / T3580B

58"H x 38½"W x 16¾"D

23"H x 39"W x 17"D



Study Desk

T3504

30"H x 60"W x 30"D



Writing Desk

T3015

30"H x 48"W x 24"D



Lateral File

T3552

30"H x 36"W x 20¼"D



Occasional / Living

*I want our furniture
to feel as if generations have
poured their lives and very
soul into it.*

Patricia





T3043 Cocktail Table
Glass Top in 833
Vintage finish



Miss Kay's Collection – Signature Occasionals

"When I was alone, I usually filled my time drawing, and I was never bored. I drew almost everything I could see, including every piece of furniture in the house."

–Bob Timberlake



"Appalachian Moon"

Bob Timberlake
AMERICAN HOME



Miss Kay's Collection –
Signature Occasionals

"I originally designed this piece for my paint, my collections, my clutter and my mess." Bob Timberlake



Cocktail Table Wood Top
T3033
20"H x 42"W x 42"D



Cocktail Table Glass Top
T3043
20"H x 42"W x 42"D



NOTE: Cocktail Table is available four ways:

- Square with Glass Top
- Rectangle with Glass Top
- Square with Wood Top
- Rectangle with Wood Top



Rectangle Table Wood Top
T3013
20"H x 48"W x 24"D



Rectangle Table Glass Top
T3023
20"H x 48"W x 24"D



Signature Chairside Table
T3034
26"H x 16"W x 24"D



Signature Sofa Table
T3032
30"H x 48"W x 16"D



Signature End Table
T3031
26"H x 24"W x 20"D

Finish & Hardware

Choose your style. Knob and handle boring locations are not interchangeable.



Matte Black
-MB



Satin Nickel
-SN



Champ Pewter
-CP



Champ Gun Metal
-CG



Champ Copper
-CC



Black Forge
-BF



Iron Forge
-IF



Old World
-OW

833 Vintage CV

Sealy CY

Natural CN

Walnut CW

Earthtone CE

Driftwood CD

Smoked CS

Onyx CO

Greystone CG - premium

Latte CL - premium

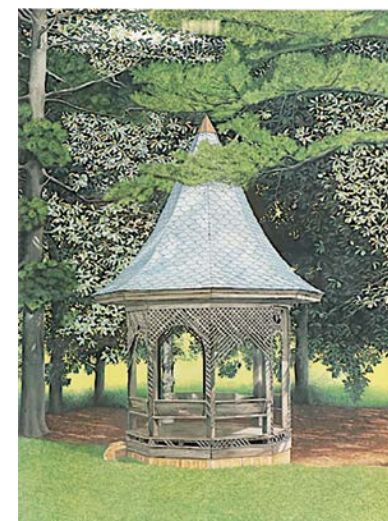




T3022 Counter
Height Wall Table in
Smoked finish



Miss Kay's Collection – Signature Occasionals



"Grubbs Gazebo"



*Miss Kay's Collection –
Signature Occasionals*

Counter Height Wall Table

T3022

36"H x 72"W x 20"D





Counter Height Wall Table
(back view)



Counter Height Wall Table
(2 electrical outlets, 2 USB ports)



Counter Height Saddle Stool
T37050
24"H x 18"W x 14"D

833 Vintage CV

Sealy CY

Natural CN

Walnut CW

Earthtone CE

Driftwood CD

Smoked CS

Onyx CO

Greystone CG - premium

Latte CL - premium



*Mrs. Julia's Collection –
Standard Occasionals*



Coffee Table

T3019

18"H x 48"W x 24"D



Standard Chairside Table

T3014

26"H x 16"W x 24"D



Hall Table
T3016
30"H x 48"W x 12"D



Standard Sofa Table
T3012
30"H x 48"W x 16"D



End Table
T3011
22"H x 24"W x 22"D

Finish & Hardware

Choose your style. Knob and handle boring locations are not interchangeable.



Matte Black
-MB



Satin Nickel
-SN



Champ Pewter
-CP



Champ Gun Metal
-CG



Champ Copper
-CC



Black Forge
-BF



Iron Forge
-IF



Old World
-OW

833 Vintage CV

Sealy CY

Natural CN

Walnut CW

Earthtone CE

Driftwood CD

Smoked CS

Onyx CO

Greystone CG - premium

Latte CL - premium

We are all woven, each of us, from
a distinct fabric - not just from parents
and grandparents, but from school teachers,
preachers, scout leaders, Sunday school
teachers, neighbors, brothers, sisters, and
friends. Each of us is totally unique
because everything we ever did and everyone
we ever met is a part of what we are today.

Bob Timberlake



Bob Timberlake®

AMERICAN HOME




Bob Timberlake®
AMERICAN HOME
by Archbold Furniture