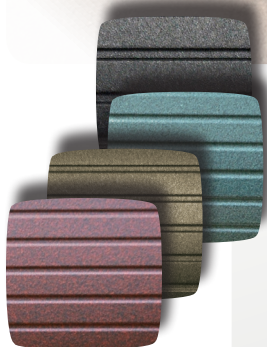


105AT4 AT SERIES



SMALL LANDSCAPE SYSTEM, (4) 4" SATS, (1) 10" SUBWOOFER, (1) JAMES A2.1 AMPLIFIER - UP TO 1400 SQ. FT



Satellites (4) 42AT4
Subwoofer (1) 101ST4
Amplifier (1) A2.1
Stakes (4) AT.STAKE.AL18
Freq Response 24Hz-20kHz±3dB
Impedance 4 ohms
Sensitivity 89dB 2.83V/1m
Finishes Sats - Black Wrinkle, Bronze Wrinkle, Verde, Weathered Iron, Premium Finishes and Plating Available

Our 105AT4 landscape system has been packaged with the budget conscious in mind, but offers many of the high tech features of our larger systems such as electronic bi-amplification. It provides liberal coverage for smaller outdoor areas or patios while also lending those areas with the kind of audio performance never before achieved with basic outdoor speakers. This system includes our new James A2.1 360W, 3 channel amplifier featuring adjustments for master level, sat crossover, sub crossover, sub level, phase shift, and bass boost, providing maximum flexibility in balancing the satellites and subwoofers in this outdoor audio system in the true bi-amp fashion.

This system features 4 inch all aluminum sats with a replaceable outer sleeves and a subterranean 10 inch subwoofer.

This system provides equal performance as its 70V counterpart, but covering a smaller area. Being 4 ohm rather than 70V, the speaker runs should be 100 feet (30.5m) or less.

See individual datasheets for speaker details and color options.



James
LOUDSPEAKER

535 Airpark Road, Napa, CA 94558
Ph: 707.265.6343
www.jamesloudspeaker.com

AUDIOPHILE OUTDOOR EXPERIENCE

20170213