

# caracole



## LOOP-DE-LOO

uph-018-231-b

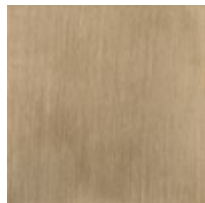
**COLLECTION:** CARACOLE UPHOLSTERY

**DIMENSIONS:** 28W x 29D x 28.25H

The epitome of effortless elegance, this iconic chair instantly creates an air of sophistication. An open fretwork design with looping ribbons of metal suspends its shapely, channel-quilted back. Two chic fabrics in shades of latte froth and sapphire blue combine to create its high-fashion appeal—a dressy fabric on its back and base features a subtle gold filament yarn while its seat cushion is tailored in a coordinated ribbed boucle-style fabric. The wood legs are finished in Dappled Mink and are capped with a Champagne Gold metal ferrule offering a graceful disposition with timeless appeal.

**CONSTRUCTION:** Blendown cushion. | 8-Way hand tied seat.

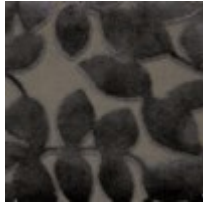
**FINISH:**



Matte Pearl

Champagne Gold

**FABRIC:**



Body Fabric: Top Rail  
and Base 2802-  
92CC, Seat Cushion  
8395-92CC