



# **SERVICE MANUAL**

**English**

**Instructions and Suggestions To  
Install Cookers And Replace Parts**

# **CONTENTS**

## **WARNING FOR YOUR SAFETY AND SUGGESTIONS**

<b>1. Installation.....</b>	<b>3</b>
<b>2. Cooker Installation Location.....</b>	<b>3</b>
<b>3. Discharge of Combustion Products.....</b>	<b>4</b>
<b>4. Positioning the Cooker.....</b>	<b>4</b>
<b>5. Connection to the Gas Supply Network: UNI-CIG 7129/7131.....</b>	<b>5</b>

## **MAINTENANCE**

<b>1. Gas Supply Rubber Pipe .....</b>	<b>6</b>
<b>2. Electrical Power Supply Cable.....</b>	<b>6</b>
<b>3. Disassemble and Assemble Oven Door.....</b>	<b>6</b>
<b>4. Bulb Replacement.....</b>	<b>7</b>
<b>5. Glass Cover (No US Models).....</b>	<b>7</b>
<b>6. Rear Cooker Disassembly.....</b>	<b>8</b>
<b>7. Replacement of the Hob Top.....</b>	<b>9</b>
<b>8. Replacing the Instrument Panel and the Programmer.....</b>	<b>12</b>
<b>9. Replacement Of the Electronic Switching Catenary.....</b>	<b>14</b>
<b>10.Replacement of Injectors and Minimum Regulations of Burners.....</b>	<b>14</b>
<b>11.Disassembling and Replacing Sides.....</b>	<b>15</b>
<b>12.Replacement of the Oven Burner.....</b>	<b>16</b>
<b>13.Replacement of Oven Gaskets.....</b>	<b>18</b>
<b>14.Replacing the Drawer.....</b>	<b>19</b>

## WARNING FOR YOUR SAFETY AND SUGGESTIONS

- This equipment is designed for domestic use.
- The data relevant to the model and the features are shown on the plate found on the internal left side of the oven.

**BEFORE PERFORMING ANY OPERATION, CUT OFF THE POWER AND CLOSE THE GAS UPSTREAM EQUIPMENT. IN THE EVENT OF THE NEED FOR THE REPLACEMENT OF PARTS AND/OR ACCESSORIES, USE ONLY ORIGINAL SPARE PARTS MADE BY LOFRA.**

- Before using the cooker, remove the plastic film that protects the stainless steel parts, the aluminum parts (dripping pan) and/or painted parts, etc. We recommend this operation being carried out carefully to avoid any damage to the protected parts.
- Dispose of the packaging, accessories or other parts relevant to the equipment in proper recycling containers according to the regulations in force.

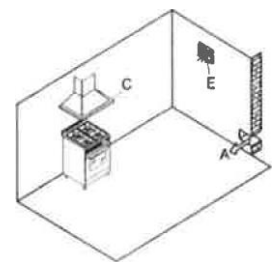
## INSTALLATION

### WARNING

- Before installing, make sure that the local distribution conditions (nature and pressure) and the electrical power supply (voltage and amperage) correspond to the values shown on the plate placed on the internal edge of the left side of the equipment.
- This equipment is not connected to a device to scavenge combustion products. It must be installed and connected according to the regulations in force.
- Pay extreme attention to the regulations relevant to room ventilation.
- The type and pressure of gas is shown on each unit (see plate).

## COOKER LOCATION INSTALLATION

- To operate properly, the cooker must be installed in a room with a minimum volume of 26 cubic meters, constantly ventilated and where the air necessary for
  - the correct gas combustion arrives naturally according to the installation regulations in force.



The natural air inflow must occur directly through:

- Permanent openings (A) along the room walls to the exterior; these openings must have a minimum section of 100 sq cm for the model with a safety device on the worktop. They must be made so that they can not be obstructed inside nor outside, placed at a floor height without disturbing the correct operation of the combustion discharging devices.
- Single or branched ventilation ducts. Ventilation air must be taken directly from the outside in an area far from polluting sources.

## DISCHARGE OF THE COMBUSTION PRODUCTS

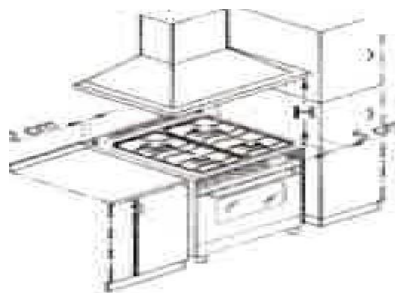
The cooking devices must always discharge all of the combustion products in proper hoods that must be connected to chimneys, flues or directly to the outdoors. If it is not possible to install a hood; an electric fan (E) can be installed onto the windows or walls; it must operate together with the device. Despite this, the regulations relevant to ventilation must always be observed.

## POSITIONING THE COOKER

### Cooker to be installed between cabinets

The cooker of this class must be placed in direct contact with the adjacent side of the cabinet

Cooker height must exceed the countertop and placed at least 5 cm from the cooker worktop. The cabinets must be made of materials resistant to a temperature of at least 120 degrees.



## ASSEMBLING INSTRUCTIONS FOR FEET



Screw the washer onto the foot nut; make sure that the flange washer is upwards, which is in the opposite direction to the leg top.



Correctly assembled foot with washer.  
The bottom part of the foot can be unscrewed to adjust the height and to align the cooker.



Room for foot on the oven bottom.

To place the feet into their room, rest the cooker on the back side and insert them.

**DO NOT** fasten the feet inclining the unit, for this might damage them.



Insert the washer, previously screwed onto the foot, into the cooker base and make it slide along the duct



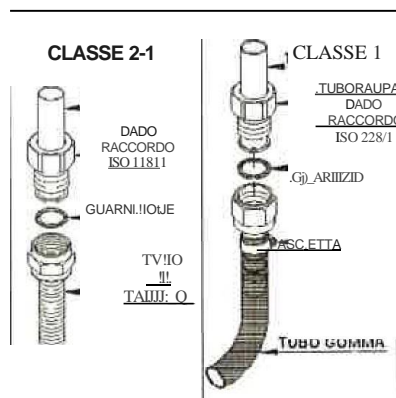
Screw the upper part of the foot until the oven base is blocked between the washer and the foot itself.

When all four feet are screwed on, lift the cooker, paying attention to distribute the weight on them uniformly.

DO NOT overturn the cooker using the legs, but lift it up (two people are needed)

## CONNECTION TO THE GAS SUPPLY NETWORK: UNI-CIG 7129/7131

With a flexible stainless steel pipe to a continuous wall according to the regulation in force, with the possibility to stretch out up to 78 inches; the ends of the tube must be prepared with connections with a threading according to 228/1 ISO regulation and a proper sealing gasket.



Before connecting the non-metallic flexible pipe, it is necessary to fix the rubber holder and the relevant gasket supplied to the pipe/incline on the cooked back. For the connection with:

- **Methane gas** : the pipe must have an internal diameter of 13 mm, fit closely to the rubber holder and fixed by the proper clamp;
- **Liquid gas (GPL - bottle):** the pipe must have an internal diameter of 8 mm and fit closely to the rubber holder and then fixed with a proper clamp; on the bottle, there must be a pressure reduction box installed, according to the regulation in force.

## CONNECTION TO THE POWER SUPPLY NETWORK

The connection of the cooker to the power supply network must be performed with the cable the cooker is equipped with; we recommend using an outlet in conformity with the regulations in force. The stamped amperage on the outlet must always be higher than the maximum amperage of the equipment (see plate date). If the equipment is not supplied with a supply cable and plug, it's necessary to install a device into the network supply in order to ensure the

network disconnection; the distance of the opening of contacts must allow the complete disconnection in the condition of III category over-voltage in conformity with the installation regulations.

**IMPORTANT:** do not place any reduction outlet between the electrical power network and the supply cable of the cooker.



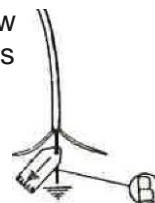
## MAINTENANCE

### GAS SUPPLY RUBBER PIPE

It's necessary to periodically (once per year) check the condition of the gas supply pipe and replace it within the expiration date printed on the pipe external surface; if the pipe is scratched, cut, burnt or is no longer elastic and is hardened and is too much like plastic, replace it immediately.

### ELECTRICAL POWER SUPPLY CABLE

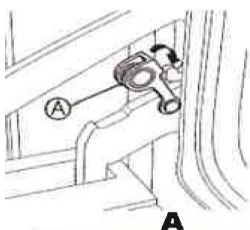
If the electrical power supply cable needs to be replaced, please remember that the equipment connection is of a Y type. Use only H0SRR-F type cables, the (yellow green) ground cable must be 2 cm longer than the other 2 phase cables. This ensures the electrical safety, if the cable is accidentally pulled.



### DISASSEMBLING AND ASSEMBLING OF THE OVEN DOOR

Open the oven mouth completely, pull the device to stop the revolving movement

- (A) on the proper hook of the hinge bracket. Hold the door sides and close it slowly until a certain resistance is perceived;
- now force and lift the
- door up simultaneously to free the hinge joint from the cooker body and pull it out.
- Follow the instructions in the reverse order to assemble; make sure that the hinge joint is inserted in its place.



## BULB REPLACEMENT

Before the replacement, disconnect the equipment from the electrical network.

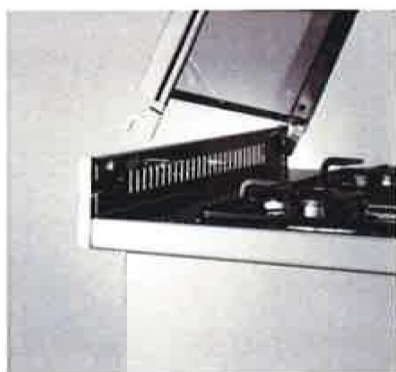
Open the oven door, unscrew the protection glass cover, replace the bulb (make sure it is of the 230V - T 572°F- E14 - 15/25 W type) and replace the protection cover.



## GLASS COVER (only for the foreseen models)

To assemble the cover, place the hinges in the appropriate places in the cooker shoulder by inserting them into the prepared openings (A), lift the cover vertically (B) and push downwards until the hinges enter (C).

For disassembling, follow the instructions in the reverse order.



A



B



C



## BACK DISASSEMBLING

Remove the fixing screws and disconnect the power supply cable to disassemble the back.



Remove the back screws



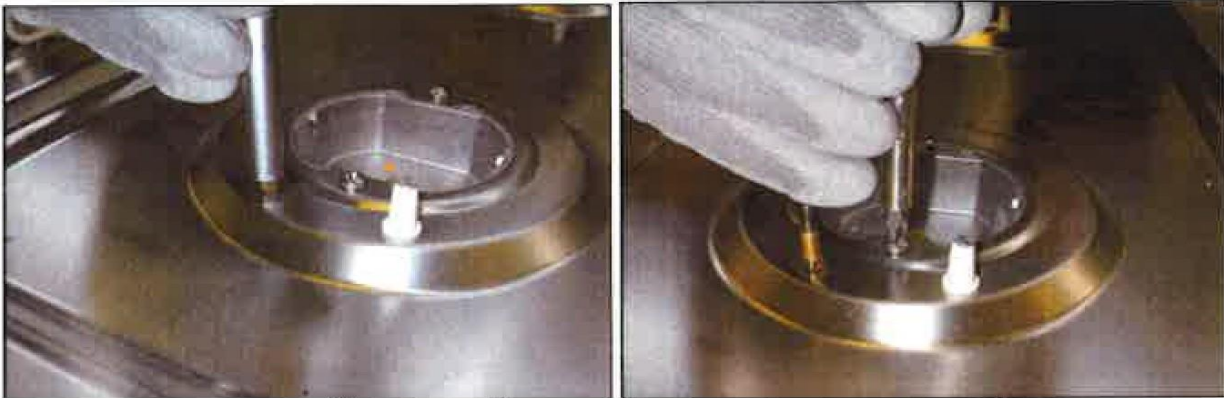
Remove the connection cables



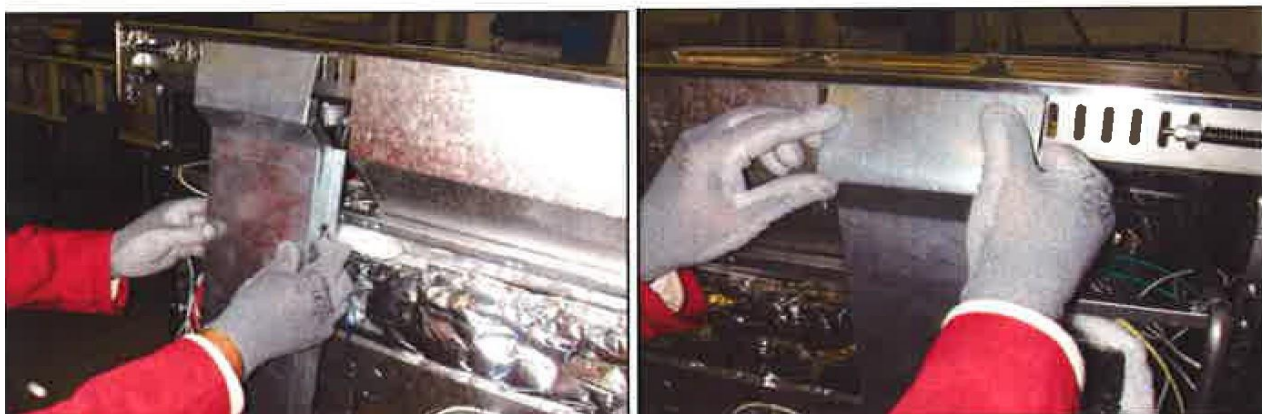
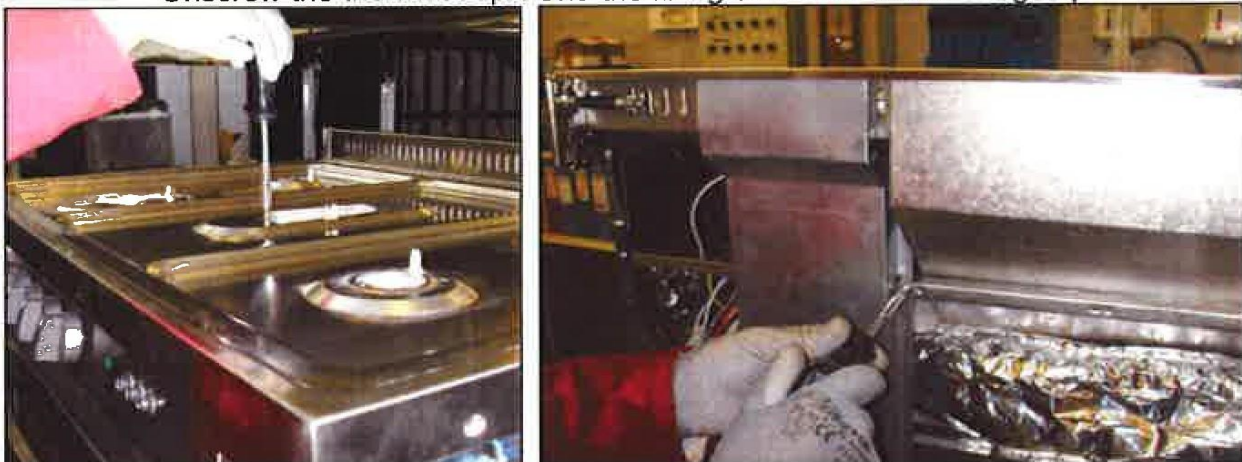


## REPLACEMENT OF THE COOKER TOP

Disassemble the back (as previously described) to replace the cooker top.



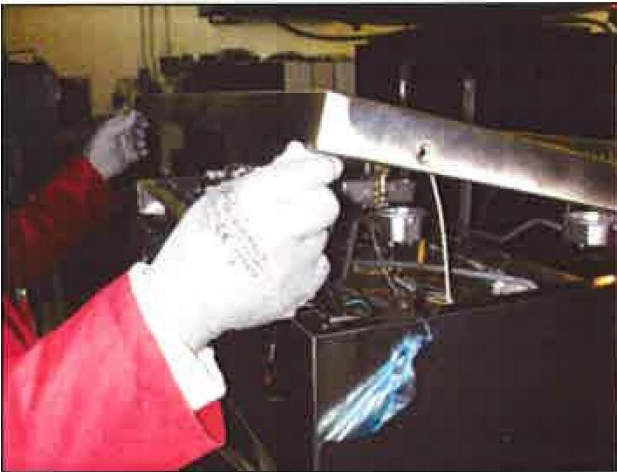
Unscrew the thermocouple and the fixing screws of the burning cup



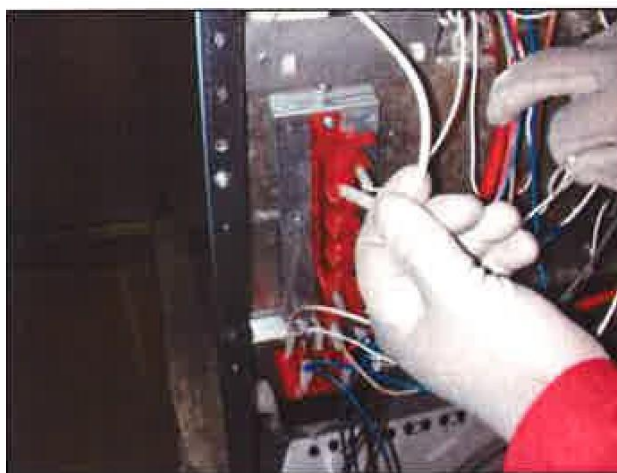
Unscrew the fixing screws of the flues



Remove the flues and unscrew the side screws of the top.

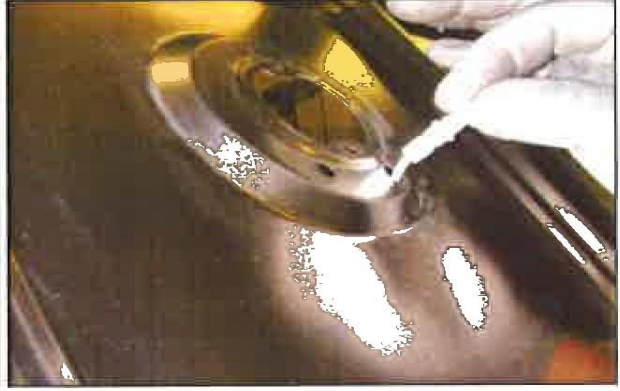


Lift the top and place a stick to support it

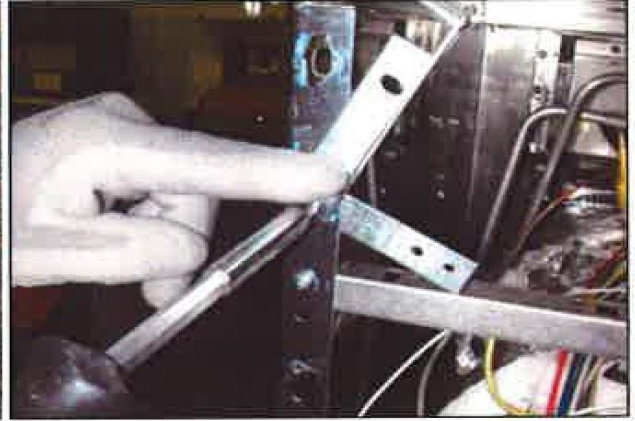
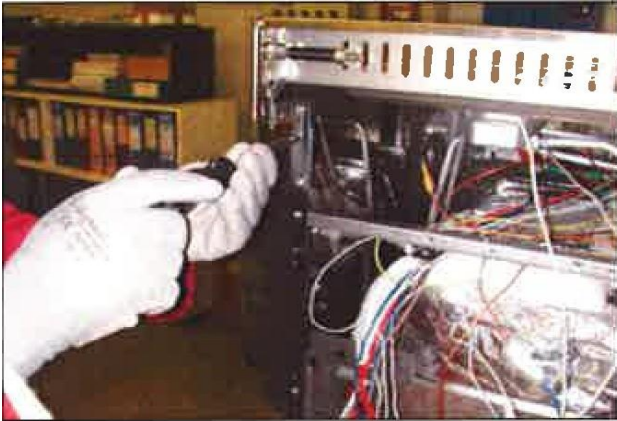


Remove the connection cables and the spark plug fixing springs





Remove the spark plug

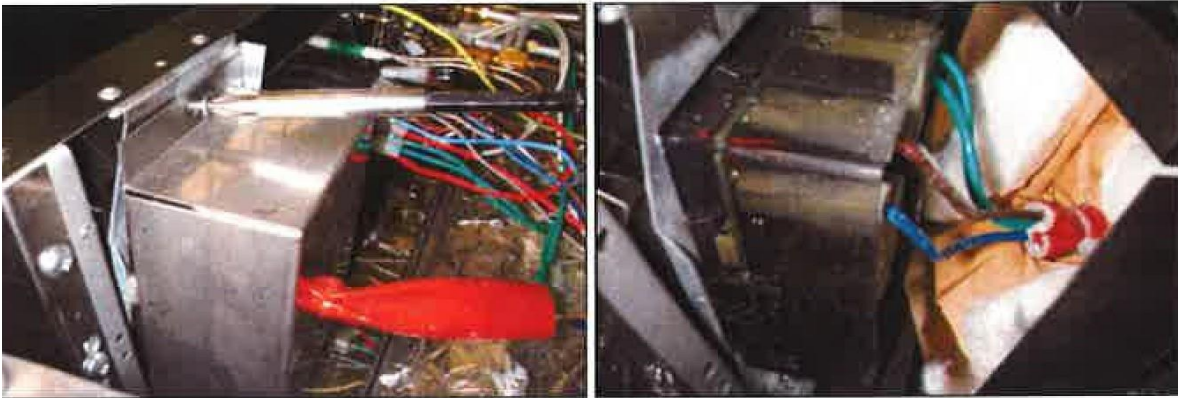


Unscrew the top hinge and remove it

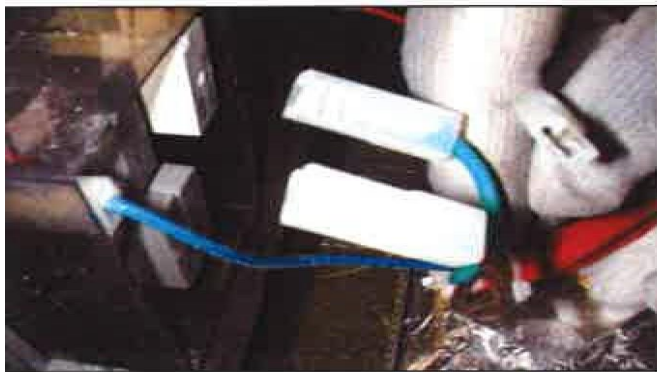


Pull the top out from the other remaining hinge. After the removal procedure has been completed, replace the part by repeating the operation in the reverse order.

## REPLACING THE INSTRUMENT PANEL AND THE PROGRAMMER



Unscrew the programmer cover screw



Disconnect the programmer cables



Unscrew the two front screws of the instrument panel



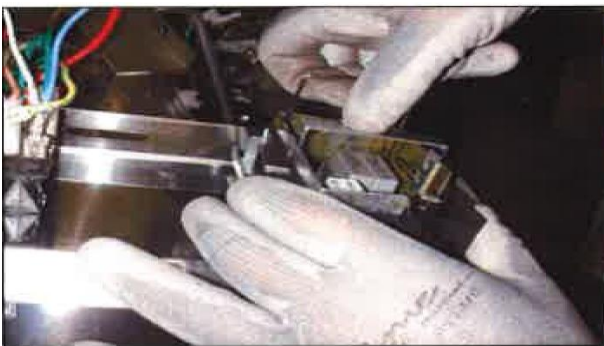


Unscrew the back screws on the side of the panel

Unscrew the back screws on the

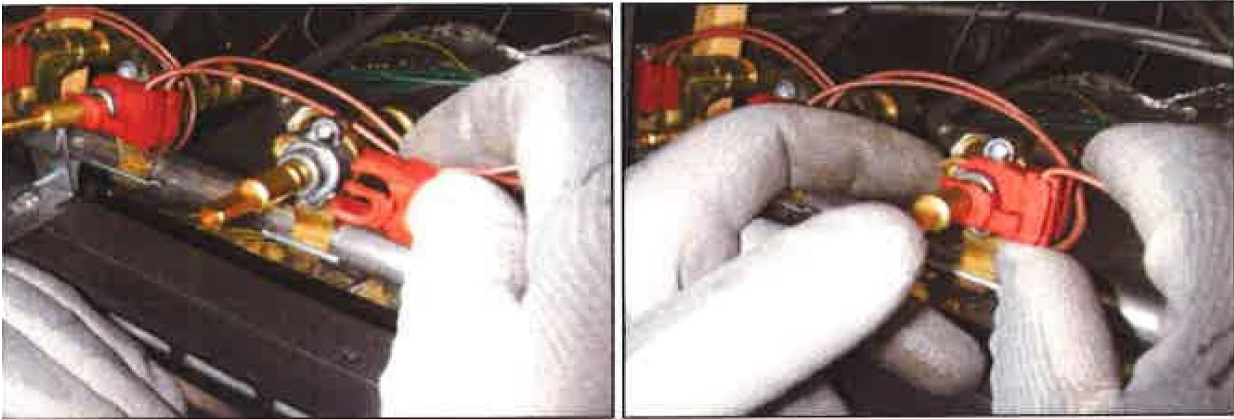


Insert the proper extractor in the programmer seat by making it adhere properly



Put the iron handle into the two holes of the programmer card and pull out the card carefully.  
The programmer will slide out completely and the replacement will be possible.

## REPLACEMENT OF THE ELECTRONIC SWITCHING CATENARY



To replace the catenary, pull it out carefully from the faucet and insert the new catenary.

## REPLACEMENT OF INJECTORS AND MINIMUM REGULATION OF BURNERS



To replace the injectors or convert gas, use a 7 mm socket wrench to unscrew them from the cup

cup



To regulate the minimum, turn on the burners to the maximum position, remove the handle and insert a small screwdriver in the rod or through the holes placed on the instrument panel beside the faucet. Loosen the by-pass screw with two revolutions counter-clockwise and rotate the rod to the minimum position. Regulate the screw that was previously loosened up to when the flame is reduced but stable, even with fast passages from the position of maximum to the position of minimum while the burner is cold.



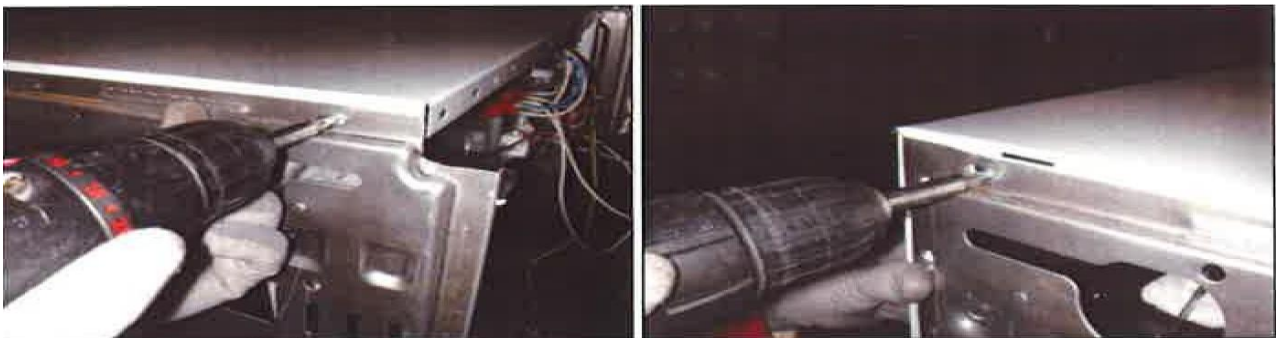
In the event of safety faucets, let the burner operate at the minimum for few minutes and make sure the device does not stop. If it occurs, increase the regulation to minimum.

N.B.: for GPL calibration, the burner minimum regulation must be carried out by screwing the faucet by-passes completely.

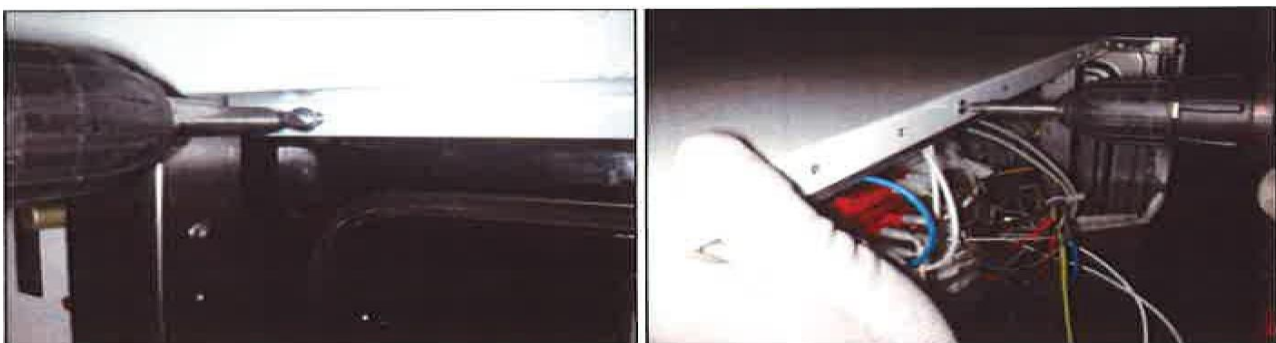
## DISASSEMBLING AND REPLACING SIDES



Overturn the cooker by placing a protection board between the side and the floor to avoid damage. Positioning must be carried out by two people. Pay attention not to damage the feet while overturning.



Remove the screws below the cooker deck.



Remove the screws in the front and back of the cooker.



Remove the screws of the instrument panel.

After disassembling the back and the top and removing the screws behind the instrument panel, remove the screws below the deck and in the front side of the cooker.



If the side must be replaced, insert the fixing clip in the slot and block it by a rivet. Carry out the procedure in the reserve direction to install the new side.

## REPLACEMENT OF THE OVEN BURNER



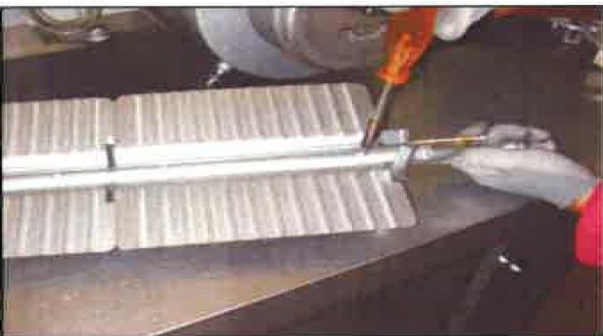
To replace the oven burner, lift the lower pot. Remove the burner fixing screw.



Pull out the burner carefully from the injector holder seat. Careful not to damage spark plug and thermocouple



With a 7 mm socket wrench, pull out the injector and replace it if necessary.



To replace the thermocouple and the spark plug, unscrew the screw of the oven burner by a screwdriver.





Remove the stop ring of the switching spark plug and pull it out carefully.



To remove the thermocouple, unscrew the nut, using an 11 mm wrench.

## REPLACEMENT OF THE OVEN GASKETS



To remove the oven gasket, remove the clips from the holes around the oven. Then repeat the operation in the reverse direction to insert a new gasket.