

# FOLDING BASES ASSEMBLY INSTRUCTIONS

## Step 1

Unfold the unit from the center and lay flat. [Figure 1](#)

## Step 2

Raise all six legs to the upright position. Each of the four end legs have a leg brace. [Figure 2](#)

## Step 3

Rotate the leg braces on all end legs to hook into the bolts and tighten with installed wing nuts. [Figure 3](#)

## Step 4

Turn the base over and upright. [Figure 4](#)

For Twin and Twin XL your base is complete. For all other sizes repeat steps 1 thru 4 for the additional base.

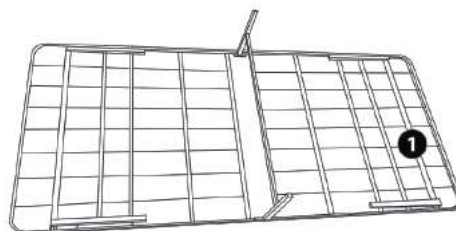
## Step 5

**Note: T and TXL sizes doesn't require this step**

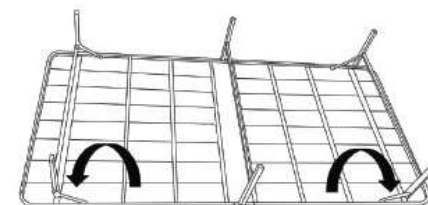
Align both bases side by side in the place where you intend to install the unit.

Attach the two bases together by inserting one of the bolts A into Bed 2 hole on the side of the main cross bar and through into Bed 1 by putting a spacer C between beds. Repeat for other end. [Figure 5](#)

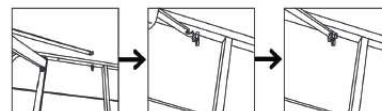
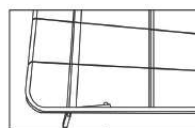
ASSEMBLY HARDWARE  
Only for Full, Queen, King and Cal King sizes



[Figure 1.](#)



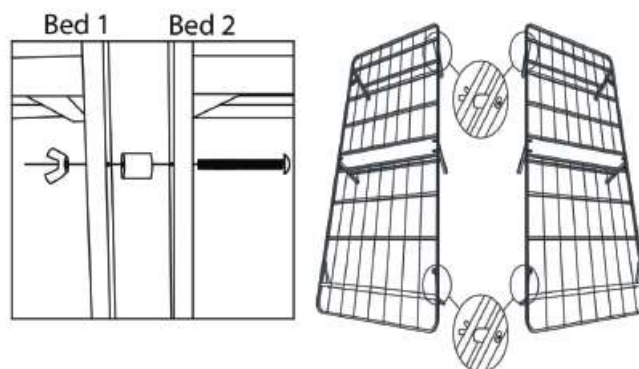
[Figure 2.](#)



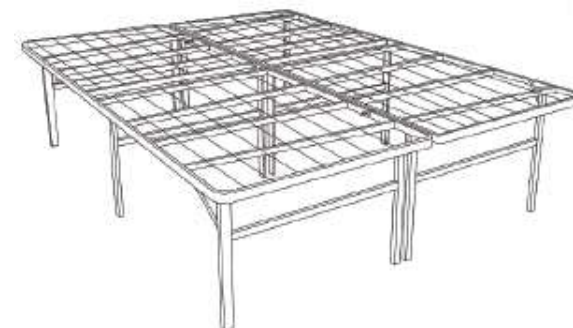
[Figure 3.](#)



[Figure 4.](#)



[Figure 5.](#)



**ASSEMBLY COMPLETE**



CONTACT US AT:  
customerservice@wsilvermx.com  
or TOLL FREE USA 1-888-737-3102  
www.wsilverproducts.com