

# ASSEMBLY INSTRUCTIONS

MODEL : BE5032-22H KING PANEL HEADBOARD  
BE5032-21R QUEEN/KING SIDE RAILS  
BE5032-21L LED LIGHT




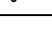


## COMPONENT LIST

No	Descriptions	Qty
A	Headboard	1
B	Footboard	1
C	Headboard Leg	2
D	Bed Slat	5
E	Bed Slat Support	10

## COMPONENT LIST

No	Descriptions	Qty
F	Side Rail	2

## HARDWARE LIST (Packed inside Headboard)

No	Descriptions	Dimension	Picture	Qty
1	JCBC	M6 x 40mm		4
2	Spring Washer	M6		4
3	Flat Washer	M6		4
4	CSK Srew	M4 x 32mm		18
5	Allen Key	M4 x 65mm		1
6	Allen Key	M5 x 65mm		1



Assembly Tool Not Included

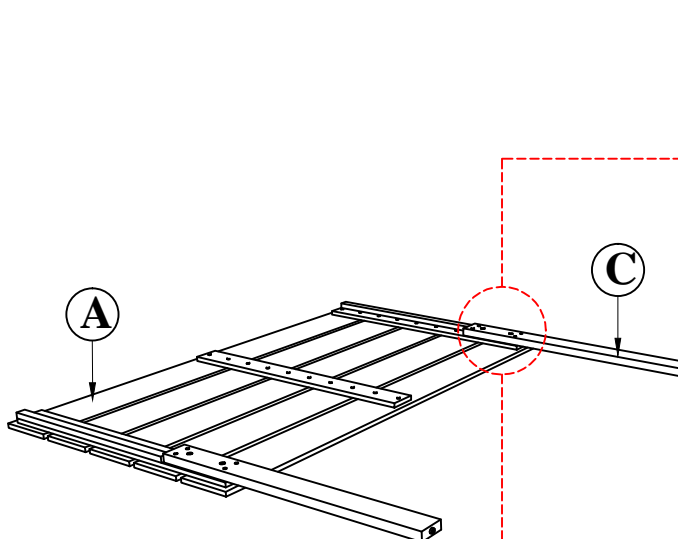
### ASSEMBLY TIPS

1. Take Out hardware from box and sort by size.
2. Please check to see that all hardware and parts are present prior start of assembly.
3. Please follow attached instructions in the same sequence as numbered to assure fast and easy assembly.

### Warning!

1. Don't attempt to repair or modify parts that are broken or defective. Please contact the store immediately.
2. This product is for home use only and not intended for commercial establishments.

## STEP 1



PLEASE REMOVE LED LAMP  
COMPONENT FROM SAPARATED  
BOX PROVIDED

LED LAMP = X2

BULB = X2

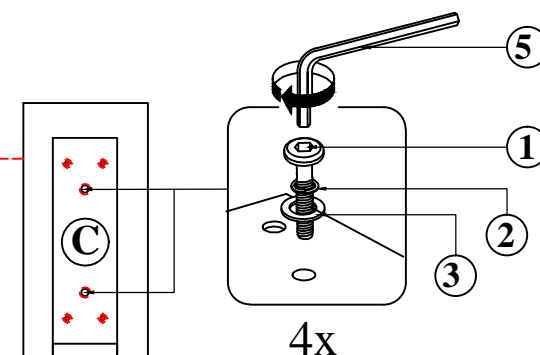


ADAPTOR = X1

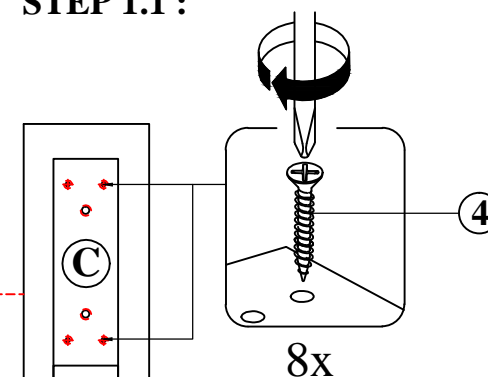


HARDWARE PACK = X1

- 7) JCBC Bolt m6x40mm Blk=4pcs  
8) Flat Washer 1/4"IDx13mmOD Blk=4pcs  
9) Spring Washer 1/4" BLK=4pcs  
10) Allen Key m4x65mm Blk=1pc

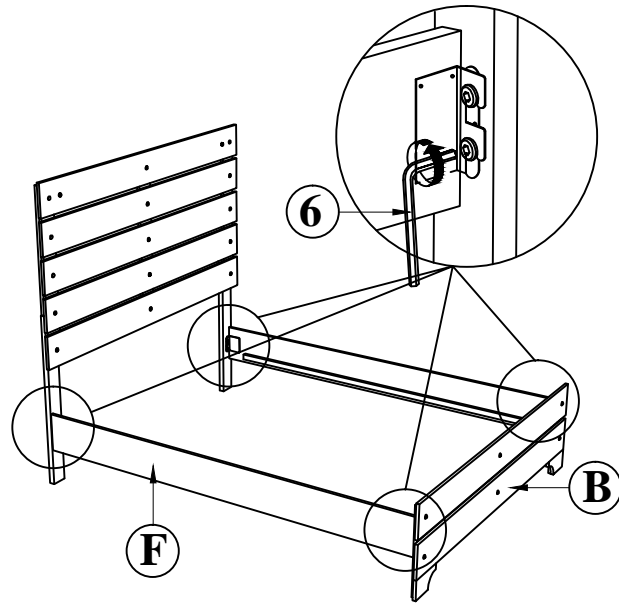


## STEP 1.1 :

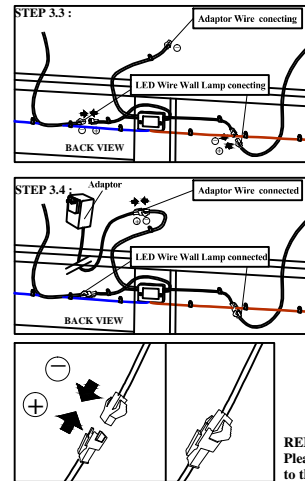


## STEP 1.2 :

## STEP 2



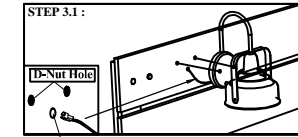
## STEP 3



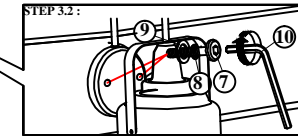
**REMARK !**  
Please Connect them carefully to avoid damages  
to the connector cord.

**REMARK:**  
HARDWARE FROM LED BOX

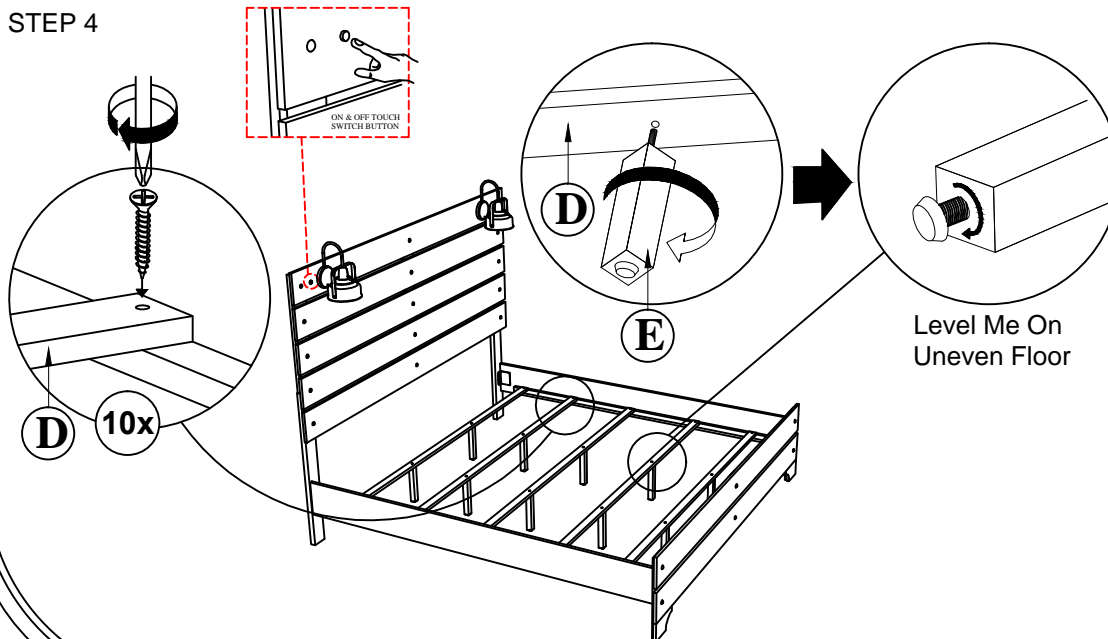
### STEP 3.1 :



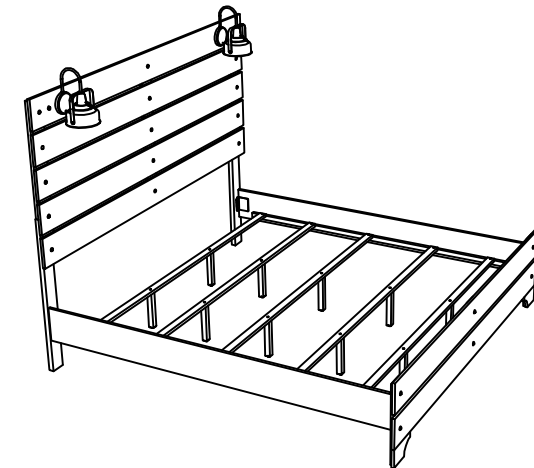
### STEP 3.2 :



## STEP 4



## COMPLETE



COMPLETE SETUP

PAGE 2 OF 2